

Shooting Star Prairies

Conservation Challenges:

- *Conversion to agricultural uses
- *Changes in agricultural practices
- *Deforestation/logging
- *Increased dewatering makes stream flow more flashy, reduces groundwater
- *Fluctuating/declining lake levels
- *Invasive spp.: Buckthorns, Eurasian honeysuckle, garlic mustard, leafy spurge, EAB
- *Habitat fragmentation
- *Urbanization/lakeshore development
- *Eutrophic lakes
- *Fire-dependent communities are likely to decline due to difficulty in restoring natural fire regimes
- *Wind farms

Conservation Opportunities:

Existing Conservation Network:

State Parks:

State Forests:

SNAs: Shooting Star

Wildlife Management Areas:

Aquatic Management Areas:

Waterfowl Production Areas (USFWS):

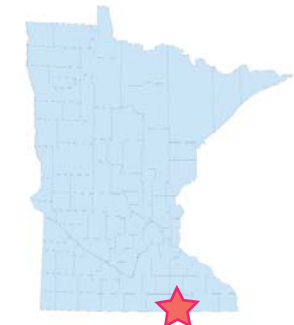
Rare Species:

Cowbane
Creek Heelsplitter
Great Indian Plantain
Plains Wild Indigo
Rattlesnake-master
Sullivant's Milkweed
Valerian
White Wild Indigo
Wild Quinine

Shooting Star Prairies Opportunity Area

Ecological Significance:

Southeastern Minnesota has some of the highest potential for remnant tall-grass mesic prairies in the state due to its rich soils and ample rainfall. However, these same characteristics and its level terrain have encouraged conversion to agriculture. Therefore, the few remaining prairies are important resources to conserve. Many prairies are found along railroad and highway rights-of-way, and have the potential to provide resource corridors, all of them quite narrow. Yet, these prairies have high species diversity, and provide a good basis for habitat corridors for consideration for OAs. These rights-of-way are discernable when looking at the rare vascular plant occurrences as rare prairie plant reports are grouped in a linear manner along these rail lines.



Counties:

Mower

Rare Native Plant Communities:

Mesic Prairie (Southern)

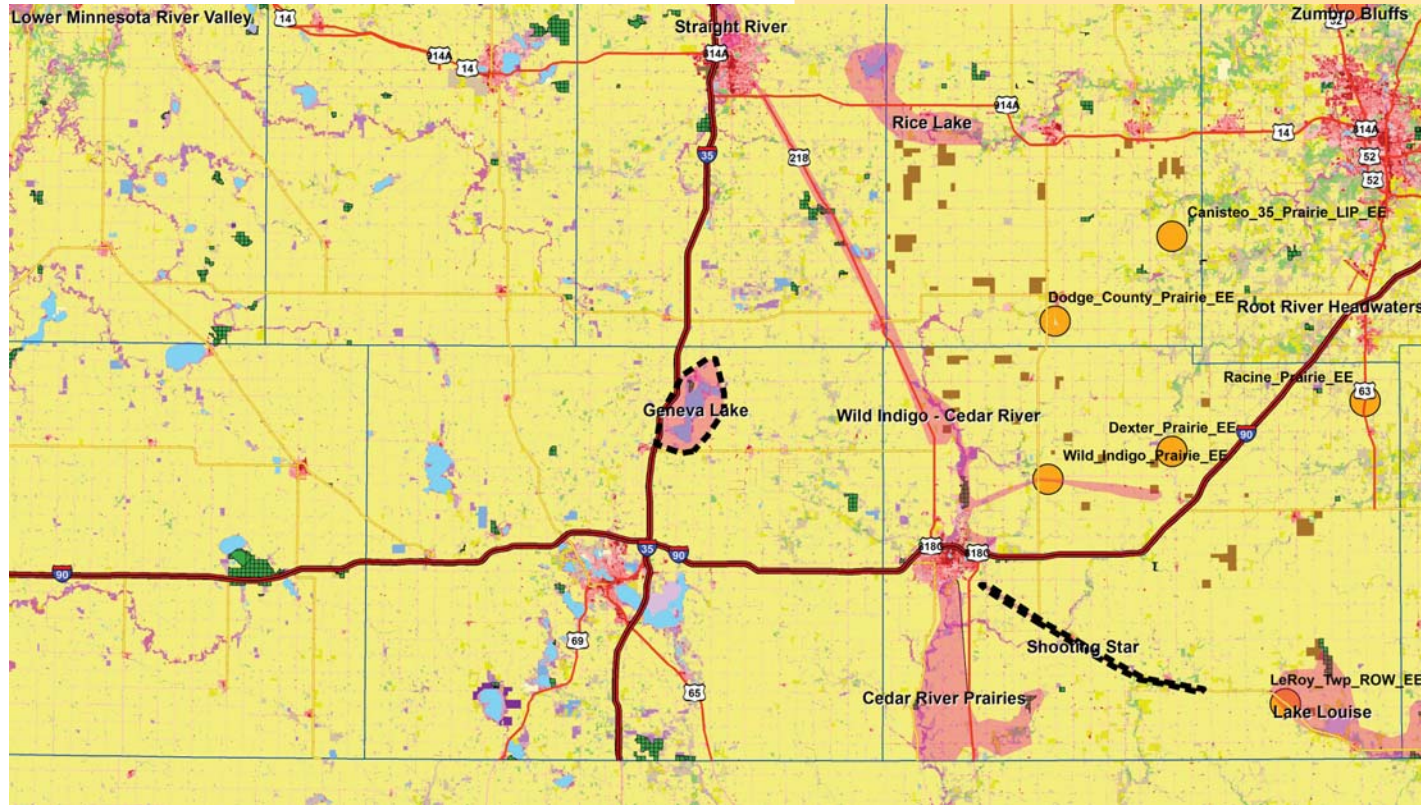
Ecological Evaluations:



Photo from fws.gov

Shooting Star Prairies

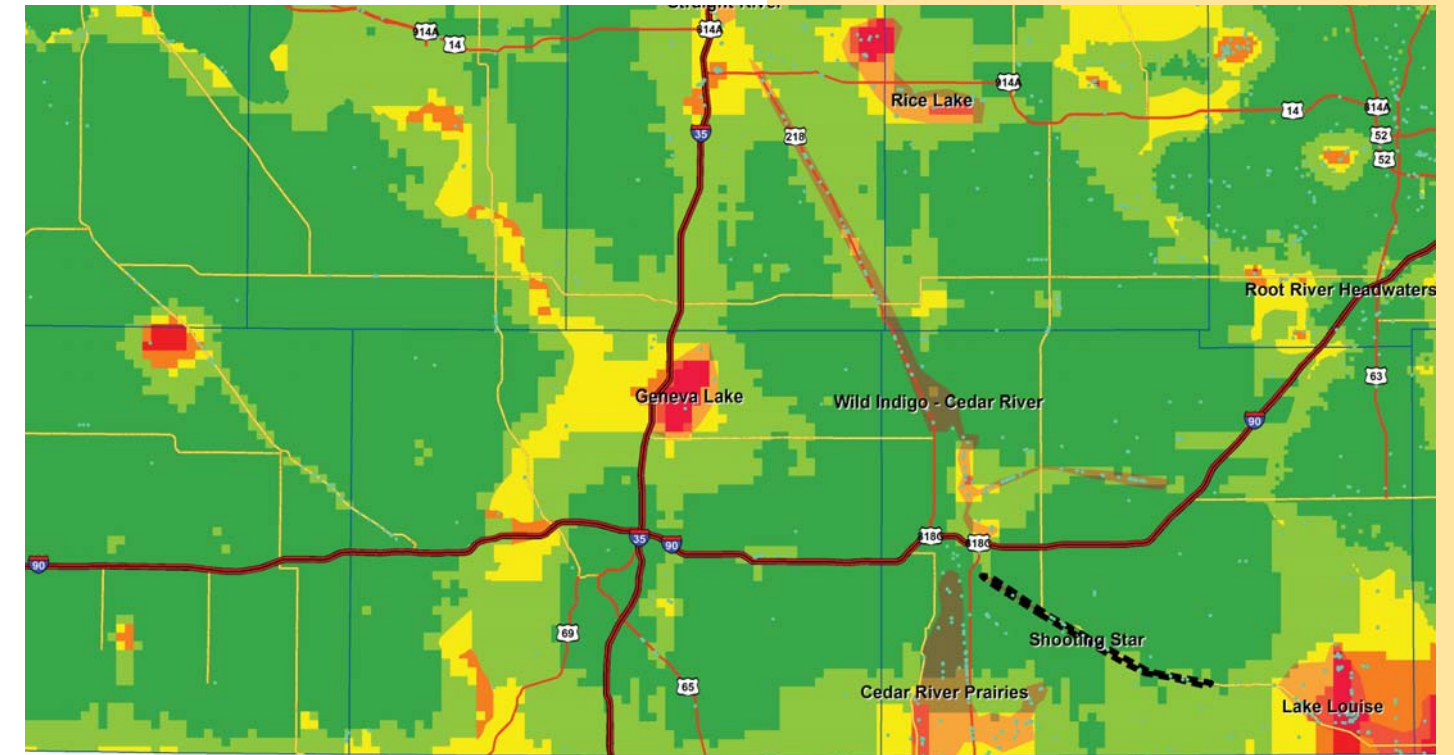
Ecological Evaluations, Land Cover, Public Ownership



Please see Legend at the front of the Opportunity Area Descriptions for a key to this map

Shooting Star Prairies

Marxan Prioritization, Element Occurrences



Legend

- Profiled COA
 - Conservation Opportunity Area
 - Rare Feature
 - County Boundary
 - Large Lake
- ### Marxan Conservation Prioritization
- Lowest Priority
 - Low Priority
 - Medium Priority
 - High Priority
 - Highest Priority
 - Interstate Highway
 - U.S. Trunk Highway
 - MN Trunk Highway