

Conservation Challenges:

- * Conversion to agricultural uses
- * Changes in agricultural practices
- * Increased draitiling makes stream flow more flashy, reduces groundwater
- * Invasive spp.: Buckthorns, leafy spurge, EAB
- * Habitat fragmentation
- * Bedrock mining
- * Wind farms
- * Fire-dependent communities are likely to decline due to difficulty in restoring natural fire regimes

Conservation Opportunities:

- * Sites are in close juxtaposition

Existing Conservation Network:

State Parks:

State Forests:

SNAs:

Wildlife Management Areas: Pipestone

Aquatic Management Areas:

Waterfowl Production Areas (USFWS):

Reinvest in Minnesota:

Rare Species:

- Blackfoot Quillwort
- Buffalo Grass
- Forget-me-not
- Hairy Water Clover
- Larger Water-starwort
- Meadow Popcorn-flower
- Mouse-eared Chickweed
- Mudwort
- Phlox Moth
- Powesheik Skipper
- Pigmyweed
- Regal Fritillary
- Short-pointed Umbrella-sedge
- Slender Plantain
- Three-Stamened Waterwort
- Topeka Shiner
- Tumblegrass
- Water-hyssop
- Western Fox snake
- Western Prairie Fringed Orchid
- Wolf's Spike rush



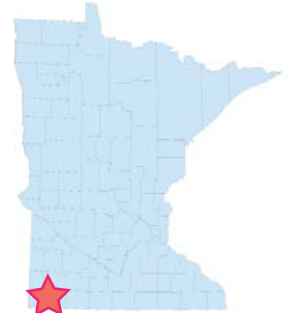
Photo by Derek Anderson, MN DNR

Rose Dell Prairie

Opportunity Area

Ecological Significance:

Rose Dell Prairie which anchors the Rose Dell Prairie Opportunity Area, is an important area for prairie habitats. The Prairie has a very good example of tall-grass mesic prairie, and is home to the largest colony of Western Prairie Fringed Orchid (*Plantanthera praeclara*) in the state outside of northwestern Minnesota. It is also one of the largest populations in private land in the United States. In addition, the area has examples of the Sioux Quartzite rock outcrop prairie community which provides habitat for a number of state and federally listed species.



Counties:

Pipestone
Rock

Rare Native Plant Communities:

Ecological Evaluations:

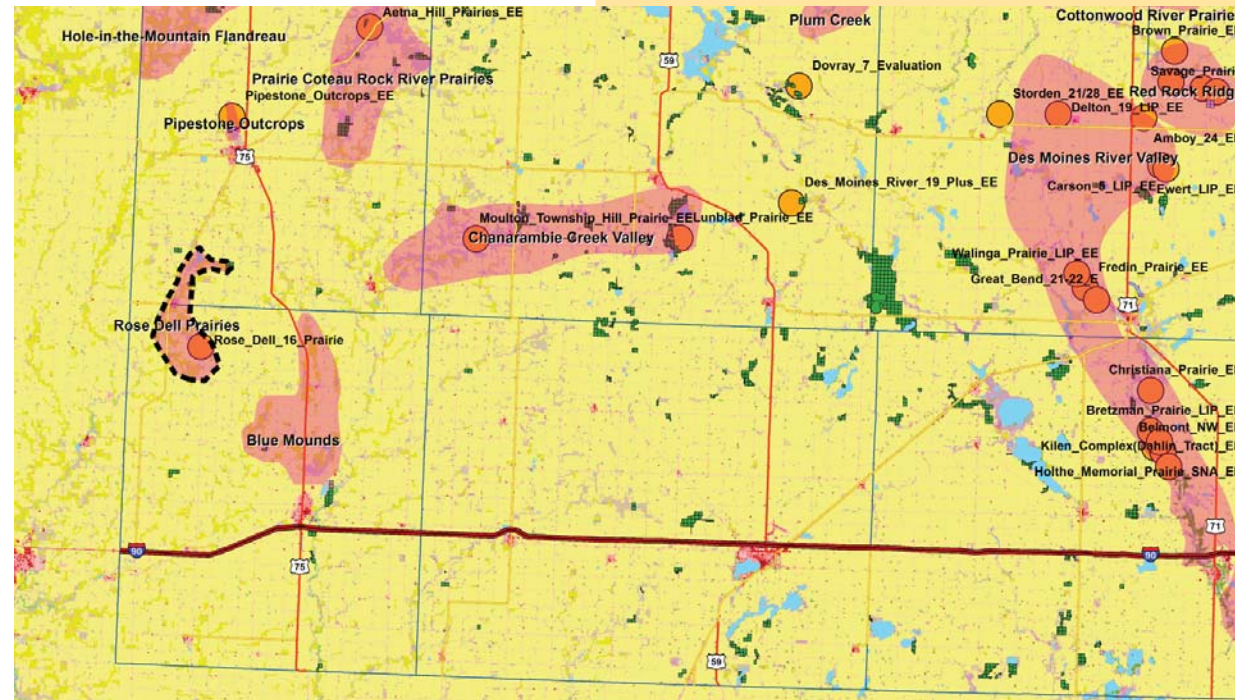
Rose Dell 16 Prairie



Photo by Derek Anderson, MN DNR

Rose Dell Prairie

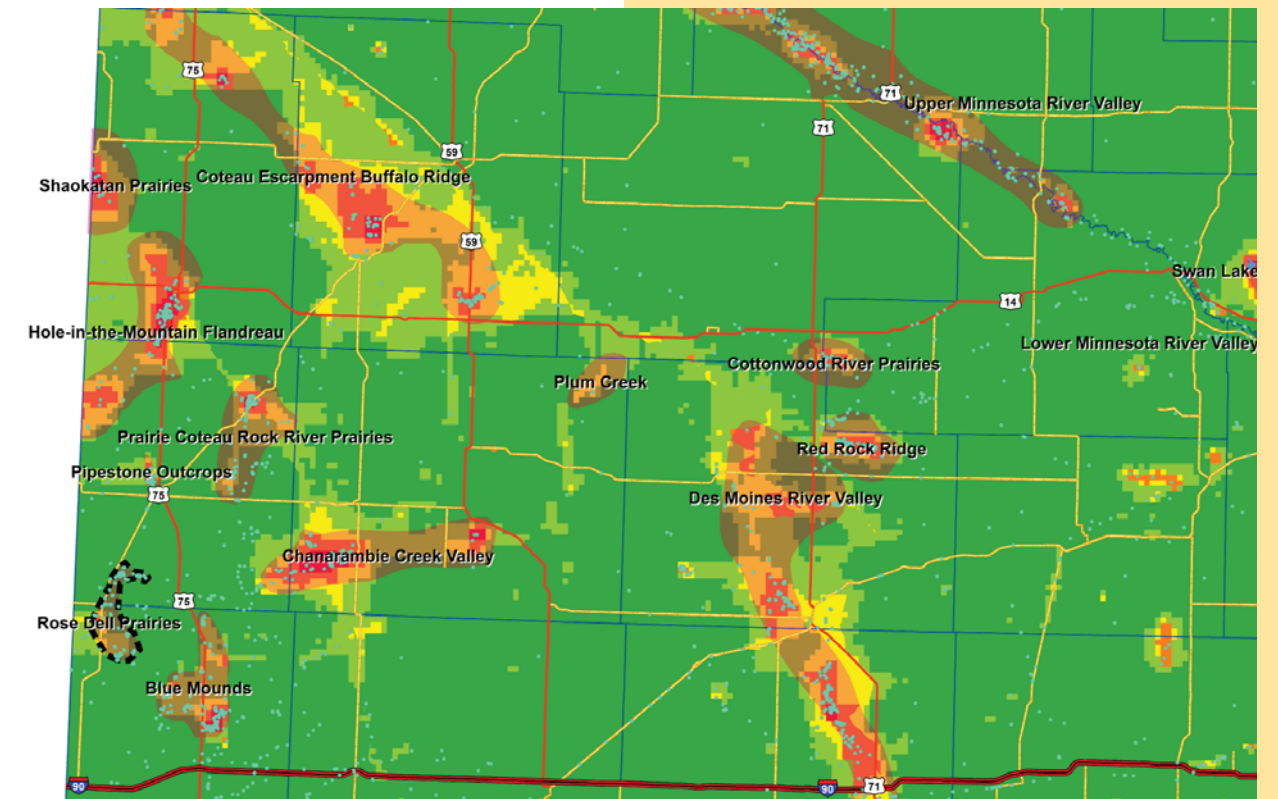
Element Occurrences, Land Cover, Public Ownership



Please see Legend at the front of the Opportunity Area Descriptions for a key to this map

Rose Dell Prairie

Marxan Prioritization, Ecological Evaluations



Legend

- Profiled COA
 - Conservation Opportunity Area
 - Rare Feature
 - County Boundary
 - Large Lake
- Marxan Conservation Prioritization**
- Lowest Priority
 - Low Priority
 - Medium Priority
 - High Priority
 - Highest Priority
 - Interstate Highway
 - U.S. Trunk Highway
 - MN Trunk Highway