

Rice Lake

Conservation Challenges:

- *Conversion to agricultural uses
- *Changes in agricultural practices
- *Deforestation/logging
- *Increased draitling makes stream flow more flashy, reduces groundwater
- *Fluctuating/declining lake levels
- *Invasive spp.: Buckthorns, Eurasian honeysuckle, garlic mustard, leafy spurge, EAB
- *Habitat fragmentation
- *Urbanization/lakeshore development
- *Eutrophic lakes
- *Fire-dependent communities are likely to decline due to difficulty in restoring natural fire regimes

Conservation Opportunities:

- * Watershed is engaged in natural resource management planning
- *

Existing Conservation Network:

State Parks: Rice Lake

State Forests:

SNAs: Hythecker Prairie

Wildlife Management Areas:

Naylor WMA

Vorce WMA

McMartin WMA

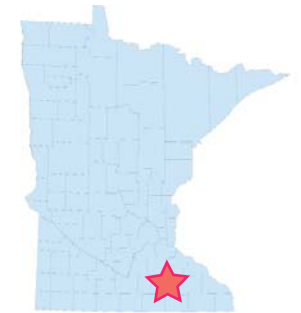
Fisheries Management Areas: Rice Lake

Waterfowl Production Areas (USFWS):

Rice Lake Opportunity Area

Ecological Significance:

Rice Lake Opportunity Area is located along the headwaters of the Zumbro River and includes a number of habitats that have a limited occurrence within the till plains of south-central Minnesota. Two areas of outstanding biodiversity significance are located in this OA, and include maple-basswood forest, elm-ash forest, emergent wetlands, and restored prairie. Very few examples of mesic hardwoods occur to the southwest of this OA as the landscape transitions to one that was historically dominated by tall-grass prairie.



Counties:

Dodge
Steele

Rare Native Plant Communities:

Mesic Prairie (Southern)

Ecological Evaluations:

Rare Species:

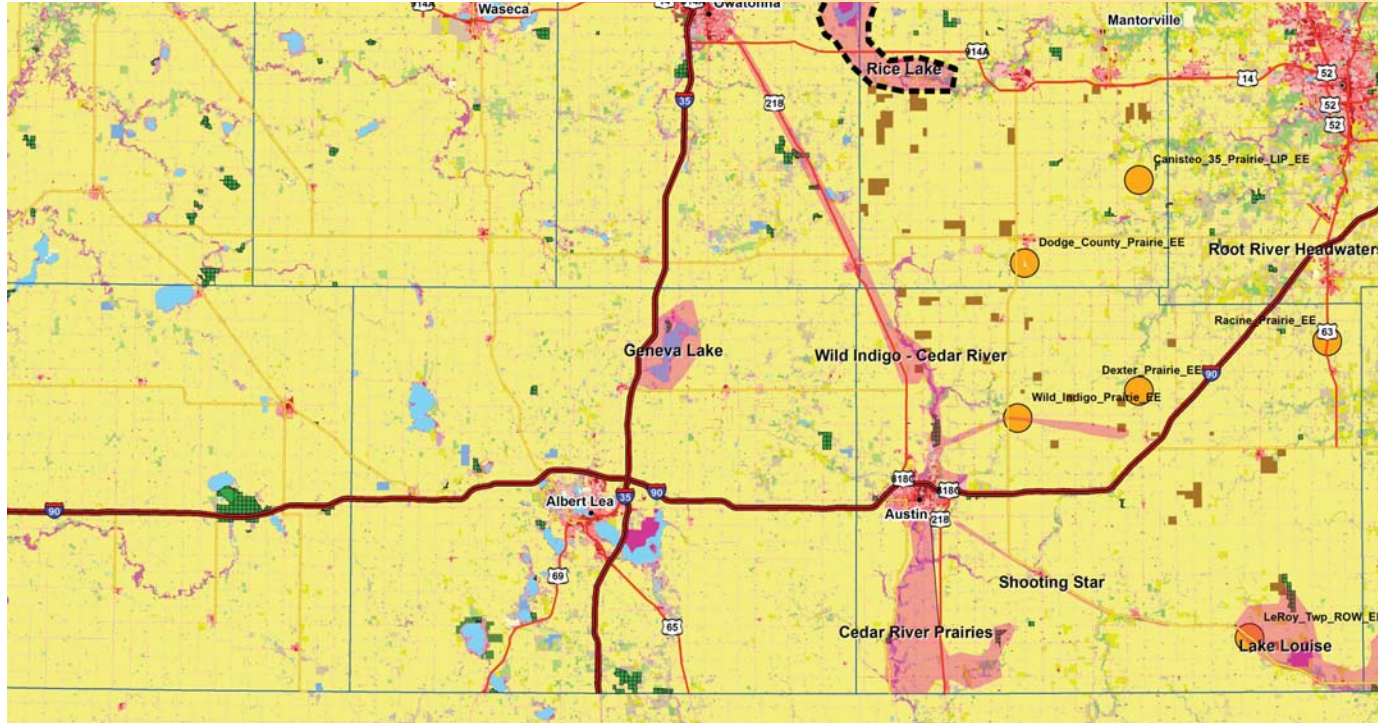
- Blanding's Turtle
- Butternut
- Colonial Waterbird Nesting Site
- Cowbane
- Green Dragon
- Muskingum Sedge
- Plains Wild Indigo
- Rattlesnake- master
- Short-eared owl
- Sullivant's Milkweed
- Tubercled Rein-orchid
- Valerian
- Wild Sweet William
- Wood's Sedge



Photo from bholecck Panoramio.com

Rice Lake

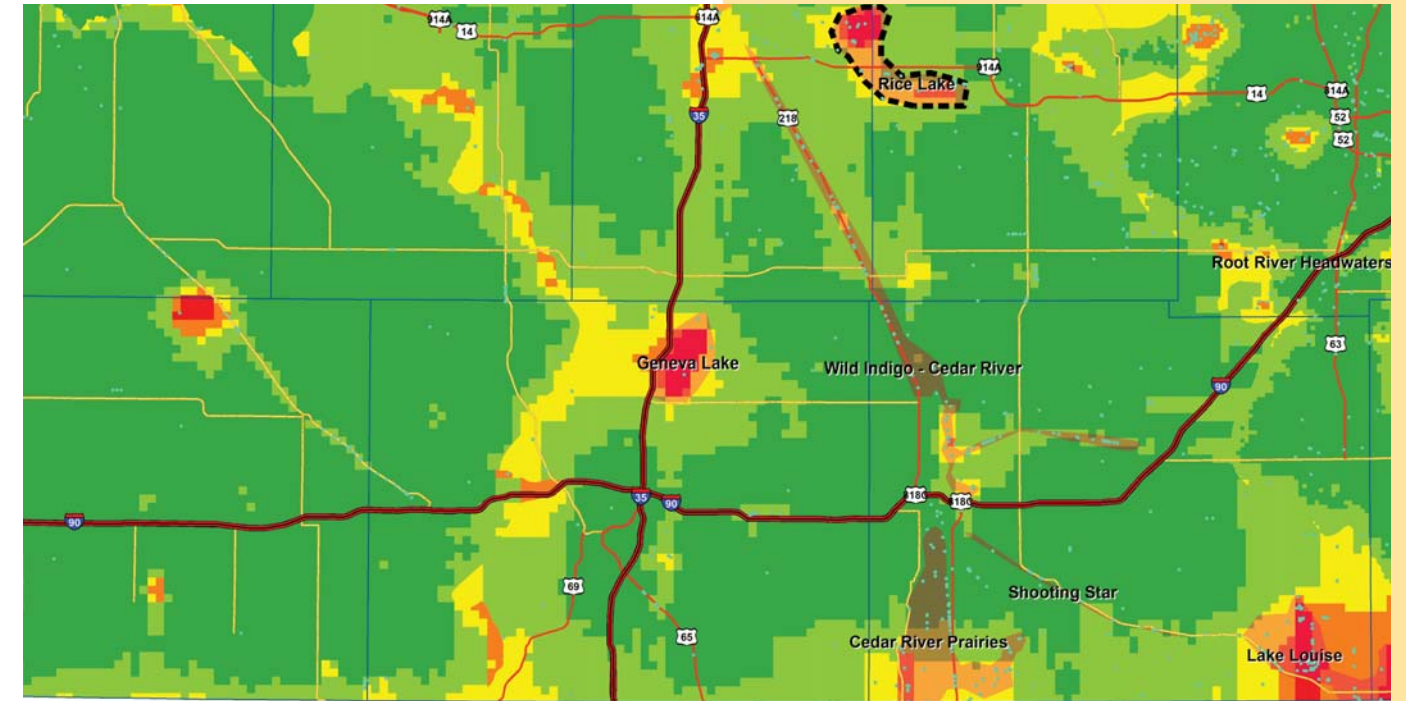
Ecological Evaluations, Land Cover, Public Ownership



Please see Legend at the front of the Opportunity Area Descriptions for a key to this map

Rice Lake

Marxan Prioritization, Element Occurrences



Legend

- Profiled COA
 - Conservation Opportunity Area
 - Rare Feature
 - County Boundary
 - Large Lake
- ### Marxan Conservation Prioritization
- Lowest Priority
 - Low Priority
 - Medium Priority
 - High Priority
 - Highest Priority
 - Interstate Highway
 - U.S. Trunk Highway
 - MN Trunk Highway