

Red Rock Ridge

Conservation Challenges:

- *Conversion to agricultural uses
- *Changes in agricultural practices
- *Increased draintiling makes stream flow more flashy, reduces groundwater
- *Invasive spp.: Buckthorns, leafy spurge, EAB
- *Habitat fragmentation
- *Fire-dependent communities are likely to decline due to difficulty in restoring natural fire regimes

Conservation Opportunities:

- * Sites are in close juxtaposition
- * Minnesota Prairie Plan

Existing Conservation Network:

State Parks:

State Forests:

SNAs: Rock Ridge Prairie

Wildlife Management Areas:

Aquatic Management Areas:

Waterfowl Production Areas (USFWS):

Reinvest in Minnesota: Yes

Rare Species:

- | | |
|------------------------------|--------------------|
| A Jumping Spider | Upland Sandpiper |
| Buffalo Grass | Water-hyssop |
| Burrowing Owl | Western Foxsnake |
| Carolina Foxtail | Wilson's Phalarope |
| Dakota Skipper | Wolf's Spike-rush |
| Forget-me-not | |
| Henslow's Sparrow | |
| Iowa Skipper | |
| Little Barley | |
| Loggerhead Shrike | |
| Meadow Popcorn-flower | |
| Mousetail | |
| Mudwort | |
| Northern Grasshopper Mouse | |
| Prairie Bush Clover | |
| Regal Fritillary | |
| Short-pointed Umbrella-sedge | |
| Tumblegrass | |



Red Rock Ridge Opportunity Area

Ecological Significance:

Red Rock Ridge Opportunity Area contains a unique assemblage of Sioux Quartzite prairies--prairies that have persisted due to their location on thin soils over Sioux Quartzite bedrock, than have made them unfavorable for cultivation, and hence they have persisted unplowed as grazing site/pasture sites. The sites also provide habitat for protected species such as the federally-listed prairie bush clover. The five sites that have had Ecological Evaluations performed are within two miles of each other. This provides an opportunity to conserved a number of important sites with a minimum investment.



Counties:

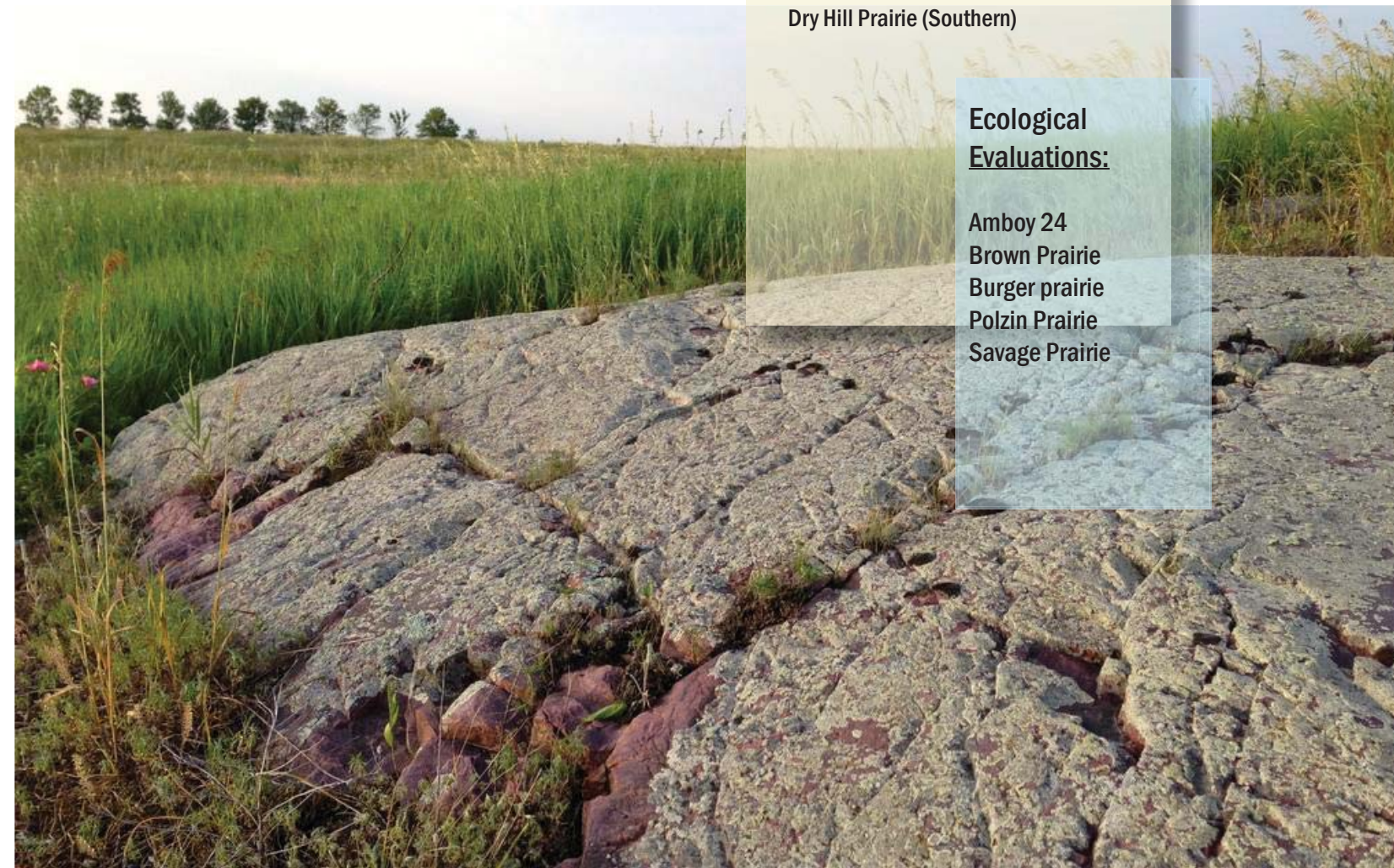
- Brown
- Cottonwood

Rare Native Plant Communities:

Dry Hill Prairie (Southern)

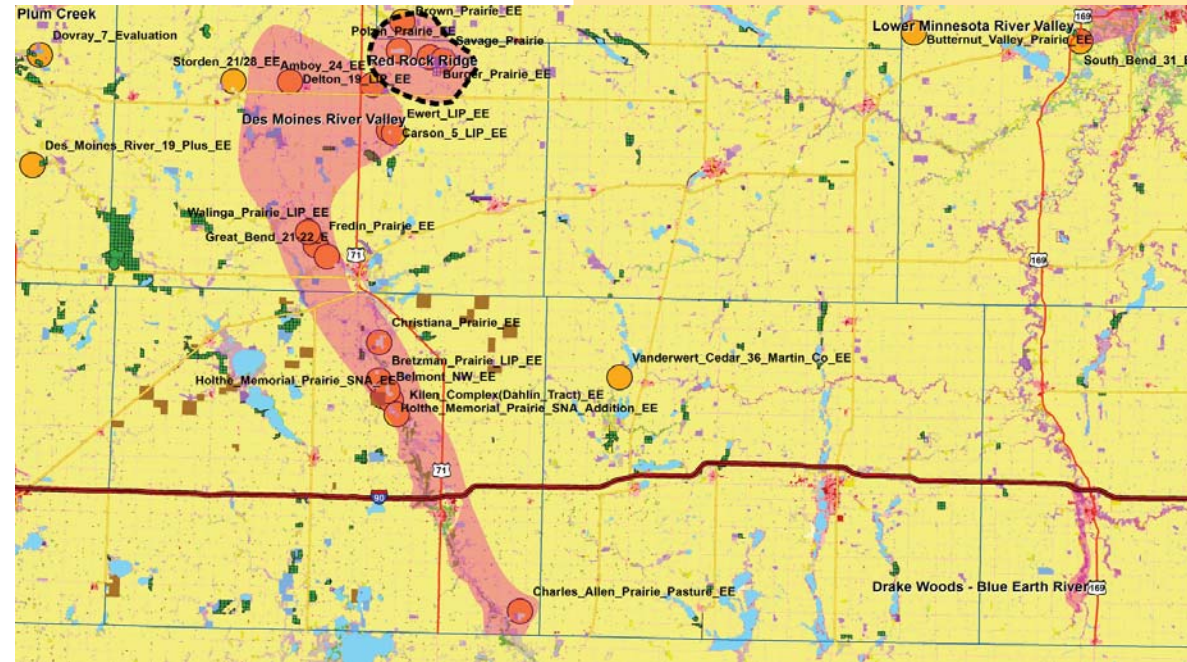
Ecological Evaluations:

- Amboy 24
- Brown Prairie
- Burger prairie
- Polzin Prairie
- Savage Prairie



Red Rock Ridge

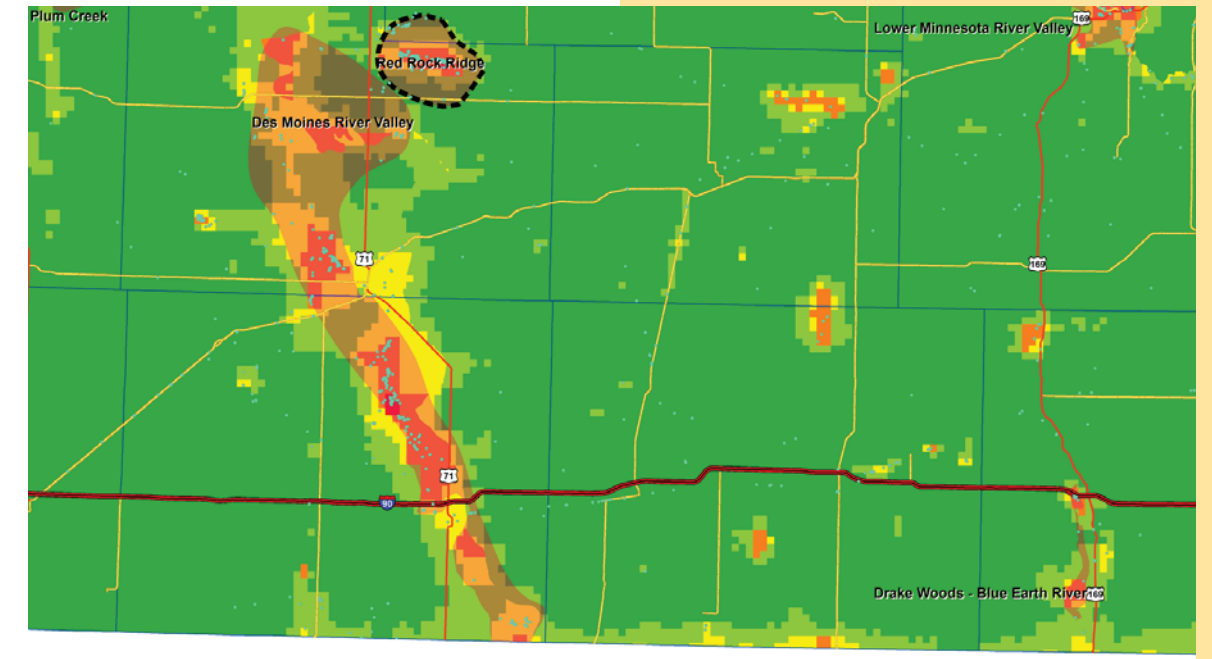
Ecological Evaluations, Land Cover, Public Ownership



Please see Legend at the front of the Opportunity Area Descriptions for a key to this map

Red Rock Ridge

Marxan Prioritization, Element Occurrences



Legend

- Profiled COA
- Conservation Opportunity Area
- Rare Feature
- County Boundary
- Large Lake

Marxan Conservation Prioritization

- Lowest Priority
- Low Priority
- Medium Priority
- High Priority
- Highest Priority
- Interstate Highway
- U.S. Trunk Highway
- MN Trunk Highway