

## Conservation Challenges:

- \* Conversion to agricultural uses
- \* Changes in agricultural practices
- \* Increased draintiling makes stream flow more flashy, reduces groundwater
- \* Invasive spp.: Buckthorns, leafy spurge, EAB
- \* Habitat fragmentation
- \* Fire-dependent communities are likely to decline due to difficulty in restoring natural fire regimes

## Conservation Opportunities:

- \* Sites are in close juxtaposition
- \*

## Existing Conservation Network:

State Parks:

State Forests:

SNAs:

Wildlife Management Areas: Buffalo Lake

Aquatic Management Areas:

Waterfowl Production Areas (USFWS):

Reinvest in Minnesota: Yes

## Rare Species:

(none)

# Plum Creek Opportunity Area

## Ecological Significance:

Plum Creek OA is probably more widely known in Minnesota for its historical ties than its natural, as it is the setting for several of Laura Ingalls Wilder's novels. The OA is centered on a somewhat-incised and semi-wooded stream system in the eastern reaches of the Coteau Escarpment. The escarpment is more gradual in the Plum Creek area than it is to the northwest, however the system of parallel drainages to the northeast is continued. This OA was selected primarily to provide continuity with previous prairie planning efforts.



## Counties:

Cottonwood  
Redwood

## Rare Native Plant Communities:

Dry Hill Prairie (Southern)

## Ecological Evaluations:

Dovray 7/Brockway  
Prairie (nearby)



Photo from Manley, Panoramio

# Plum Creek

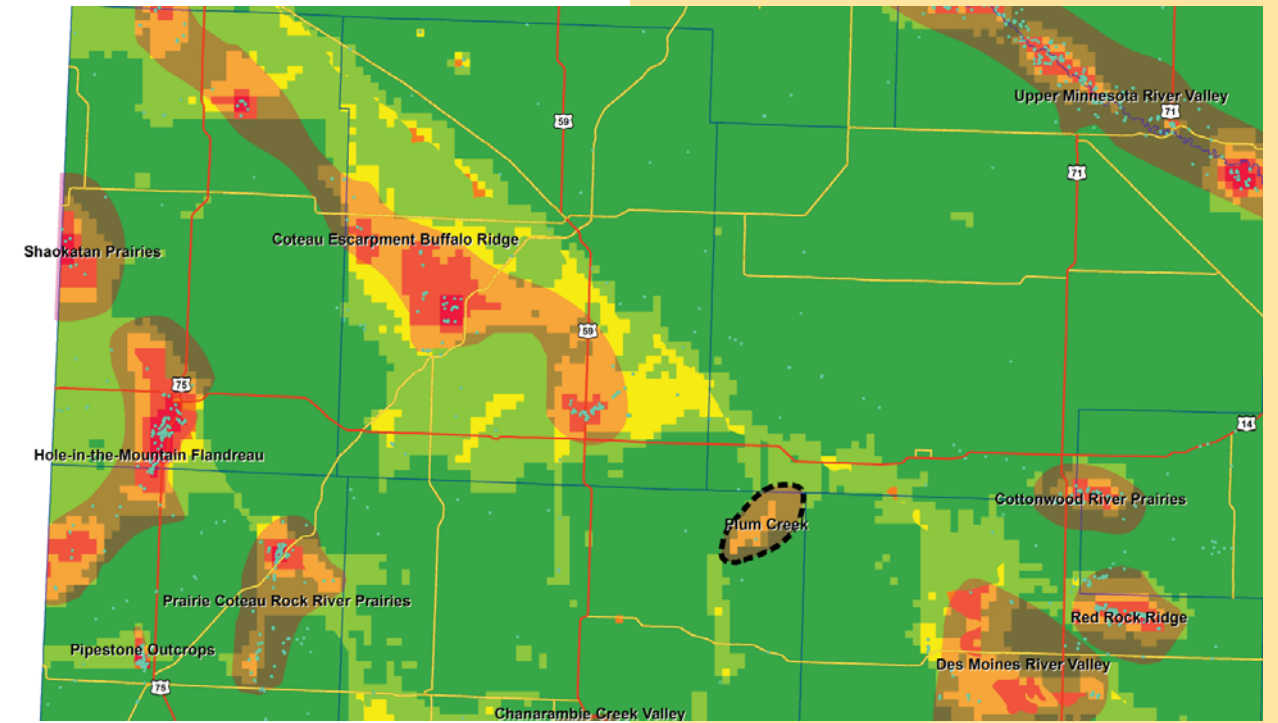
## Ecological Evaluations, Land Cover, Public Ownership



Please see Legend at the front of the Opportunity Area Descriptions for a key to this map

# Plum Creek

## Marxan Prioritization, Element Occurrences



### Legend

- Profiled COA
  - Conservation Opportunity Area
  - Rare Feature
  - County Boundary
  - Large Lake
- ### Marxan Conservation Prioritization
- Lowest Priority
  - Low Priority
  - Medium Priority
  - High Priority
  - Highest Priority
  - Interstate Highway
  - U.S. Trunk Highway
  - MN Trunk Highway