

## Conservation Challenges:

- \* Conversion to agricultural uses
- \* Changes in agricultural practices
- \* Increased dewatering makes stream flow more flashy, reduces groundwater
- \* Fluctuating/declining groundwater levels
- \* Invasive spp.: Buckthorns, Eurasian honeysuckle, garlic mustard, leafy spurge, EAB
- \* Habitat fragmentation
- \* Agricultural water pollutants/sedimentation

## Conservation Opportunities:

- \* Watershed is engaged in natural resource management planning

## Existing Conservation Network:

**State Parks:** Cascade River

**State Forests:**

**SNAs:** Butterwort Cliffs

**Aquatic Management Areas:** Cascade River  
Devil Track River

**Private:**

## Rare Features:

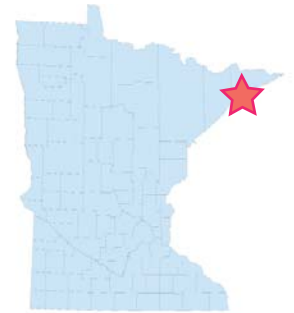
- |   |                             |
|---|-----------------------------|
| A Caddisfly                                 | Smooth lungwort             |
| Alpine Bistort                              | Smooth Woodsia              |
| Alpine Woodsia                              | Stream Erosion (Quaternary) |
| American Shore-plantain                     | Triangle Moonwort           |
| Auricled Twayblade                          | White Baneberry             |
| Bald Eagle                                  | Yellow Specklebelly lichen  |
| Bitter Fleabane                             | Yellow Rail                 |
| Black Hawthorn                              | Yellow Sedge                |
| Braun's Holly Fern                          | Yellow Specklebelly         |
| Butterwort                                  |                             |
| Carolina Spring-beauty                      |                             |
| Climbing Fumitory                           |                             |
| Club-spur Orchid                            |                             |
| Common Moonwort                             |                             |
| Dragon's-mouth                              |                             |
| Elegant Groundsel                           |                             |
| Fan lichen                                  |                             |
| Franklin's Phacelia                         |                             |
| Hudson Bay Eyebright                        |                             |
| Intermediate Sedge                          |                             |
| Kiyi  |                             |
| Lanceleaf Grapefern                         |                             |
| Laurentian Bladder Fern                     |                             |
| Least Moonwort                              |                             |
| Matricary Grapefern                         |                             |
| Methuselah's Beard Lichen                   |                             |
| Mineral                                     |                             |
| Mingan Moonwort                             |                             |
| Mixed Unit or Sequence (Middle Proterozoic) |                             |
| Moschatel                                   |                             |
| Narrow False Oats                           |                             |
| Neat Spike-rush                             |                             |
| Northern Comandra                           |                             |
| Northern Myotis                             |                             |
| Pale Moonwort                               |                             |
| Pale Sedge                                  |                             |
| Peregrine Falcon                            |                             |
| Selwyn's Ear-leaf Liverwort                 |                             |
| Shortjaw Cisco                              |                             |
| Slender Hairgrass                           |                             |
| Small False Asphodel                        |                             |
| Small-flowered Woodrush                     |                             |

# North Shore Cliffs

## Opportunity Area

## Ecological Significance:

The northeastern portion of the Lake Superior North Shore possesses unique qualities as the shore becomes more boreal, and has rocky habitats that provide refugia for circumpolar species. Unfortunately, the rocky cliffs are also attractive locations for tourist activities and development due to their scenic views. Therefore, the special habitats that house species typically only found hundreds of miles to the north have limited ability to migrate and find other suitable habitat. Protection of existing habitat is critical. In addition, due to the narrowness of the lakeshore zone, these habitats have limited areas of occurrence.



**Counties:**

Cook

## Rare Native Plant Communities:

- Coastal Wetland
- Northern Poor Fen

## Ecological Evaluations:

Thompsonite Beach/  
Butterwort Cliff



Photo courtesy of minnesotaseasons.com

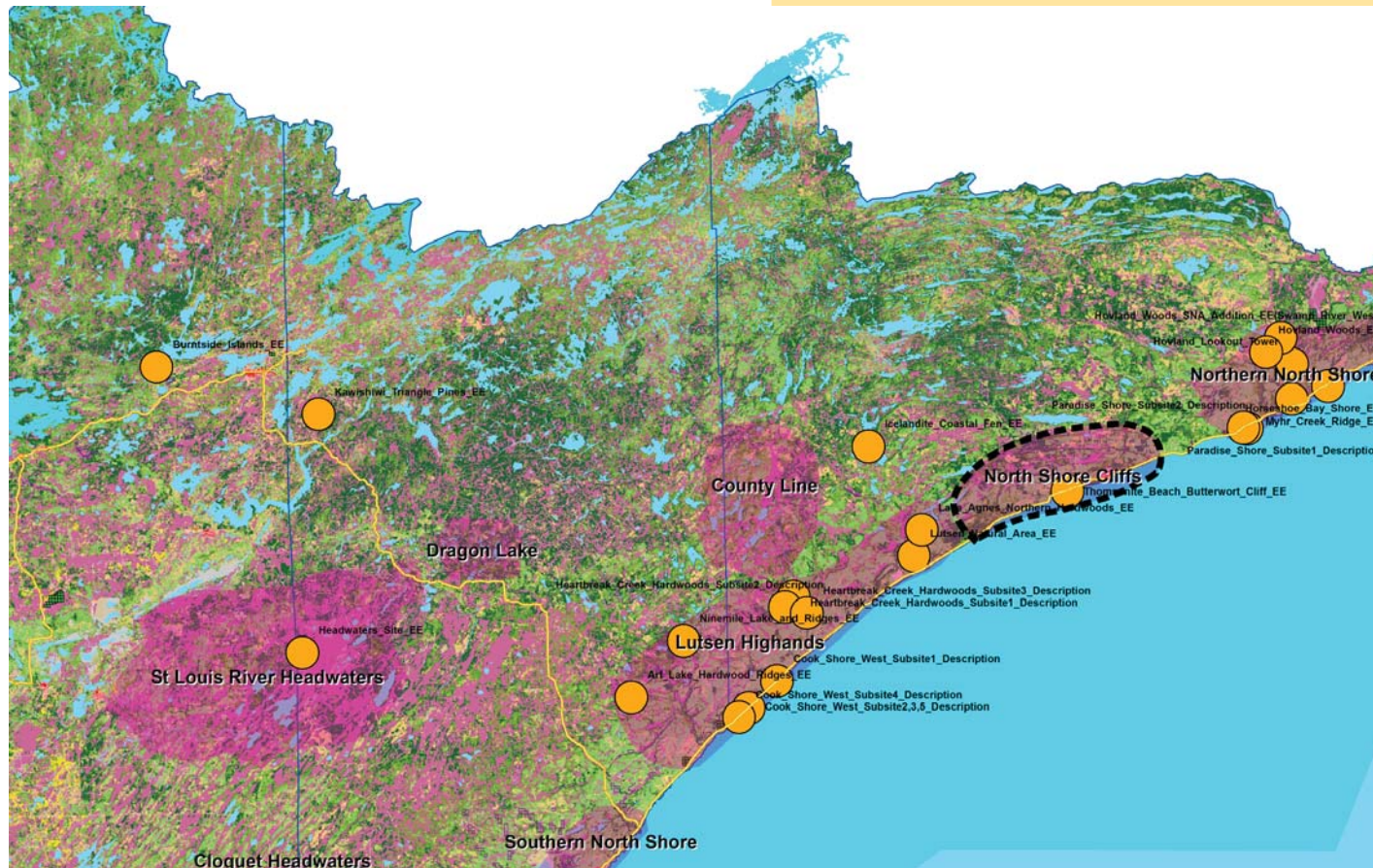


Photo courtesy of ColdSnap Photography



# North Shore Cliffs

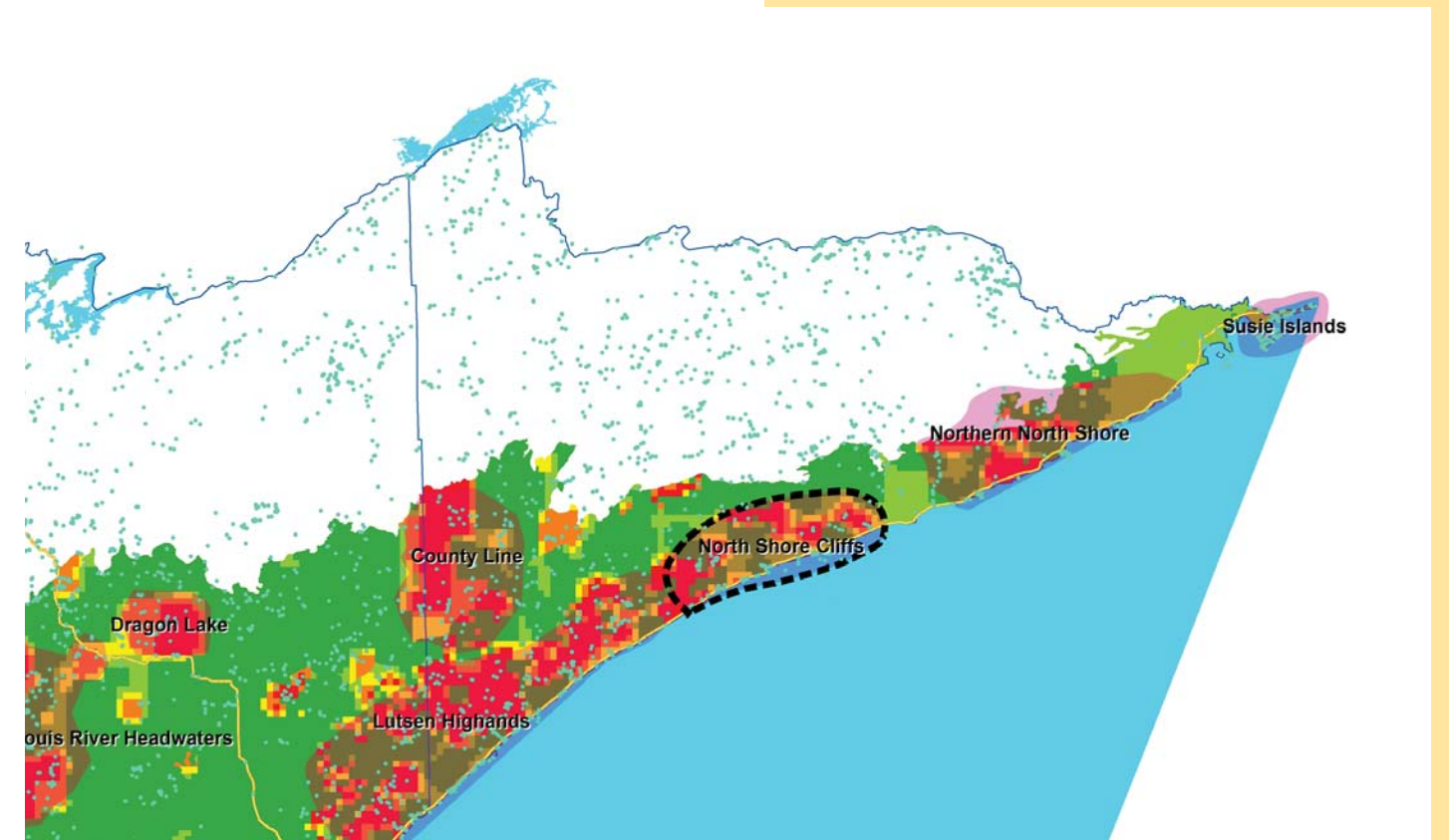
Ecological Evaluations, Land Cover, Public Ownership



Please see Legend at the front of the Opportunity Area Descriptions for a key to this map

# North Shore Cliffs

Marxan Prioritization, Element Occurrences



**Legend**

- Profiled COA
- Conservation Opportunity Area
- Rare Feature
- County Boundary
- Large Lake

**Marxan Conservation Prioritization**

- Lowest Priority
- Low Priority
- Medium Priority
- High Priority
- Highest Priority
- Interstate Highway
- U.S. Trunk Highway
- MN Trunk Highway