

Conservation Challenges:

- *Conversion to agricultural uses
- *Changes in agricultural practices
- *Conversion to mining
- *Deforestation/logging
- *Increased draintiling makes stream flow more flashy, reduces groundwater for algific habitats
- *Waterways are more incised, with more alluvium, and higher turbidity, TMDL
- *Invasive spp.: Common buckthorn, Eurasian honeysuckle, garlic mustard, leafy spurge
- *Habitat fragmentation
- *Declining groundwater levels
- *Fire-dependent communities are likely to decline due to difficulty in restoring natural fire regimes

Conservation Opportunities:

*

Existing Conservation Network:

State Parks:

State Forests:

Richard J. Dorer

SNAs: Cannon River Turtle Preserve

River Terrace Prairie

Aquatic Management Areas:

Gemini

Wildlife Management Areas:

Gore's Pool #3

Hastings

Tangential

Important Bird Areas:

Lower Vermillion - Cannon Bottoms

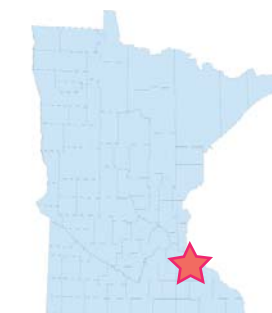
Rare Species:

Acadian Flycatcher	Mucket
American Brook Lamprey	Narrow-leaved Pinweed
American Ginseng	North American Racer
Bald Eagle	Old Field Toadflax
Black Buffalo	Ozark Minnow
Black Sandshell	Paddlefish
Bladder Pod	Pallid Shiner
Blanding's Turtle	Pawnee Skipper
Blue Sucker	Peregrine Falcon
Butterfly	Pistolgrip
Cerulean Warbler	Plains Pocket Mouse
Clasping Milkweed	Plains Wild Indigo
Clustered Broomrape	Prairie Bush Clover
Creek Heelsplitter	Prairie Vole
Creeping Juniper	Pugnose Minnow
Crystal Darter	Purple Wartyback
Dwarf Trout Lily	Rattlesnake-master
Eastern Hognose Snake	Raven's foot Sedge
Ebonysnell	Red-shouldered Hawk
Elephant-ear	Rhombic-petaled Evening Primrose
Elktoe	Rock Pocketbook
Ellipse	Rock Sandwort
Fluted-shell	Round Pigtoe
Glade Mallow	Sandhill Crane
Gopher snake	Sea-beach Needlegrass
Gray's Sedge	Sessile-flowered Cress
Green Dragon	Sheepnose
Hickorynut	Shovelnose Sturgeon
Higgins Eye	Six-angle Spurge
Hill's Thistle	Skipjack Herring
James' Polanisia	Small-leaved Pussytoes
Kitten-tails	Smooth Softshell
Lake Sturgeon	Spike
Leonard's Skipper	Squirrel-corn
Lilia-leaved Twayblade	Upland Sandpiper
Loggerhead Shrike	Virginia Water Horehound
Long-bearded Hawkweed	Wartyback
Milk snake	Washboard
Monkeyface	Western Fox snake
Moschatel	Western Harvest Mouse
	Winged Mapleleaf
	Wood's Sedge
	Wood Turtle
	Yellow Sandshell

Lower Cannon-Vermillion Bottoms Opportunity Area

Ecological Significance:

The Lower Vermillion - Cannon Bottoms encompasses a number of important resources in close proximity to the Twin Cities metropolitan area, including features such as the trout habitat of the Vermillion River, the waterfalls of the Vermillion Gorge, and avian habitats and rookeries of the Vermillion Bottoms. This is a key area in the flyway as it is also located at the base of the Twin Cities and near the confluence with the St. Croix River. The Cannon Bottoms has one of the largest floodplain forests in southeastern Minnesota. The area is one of the top four locations for rare forest birds in the entire state. A total of 153 bird species use the area as permanent, semi-permanent, or migratory habitats, of which 14 have special conservation concerns. A number of wetland types also occur in the OA, including calcareous fens.



Counties:

Dakota
Goodhue

Rare Native Plant Communities:

- Black Oak - White Oak Woodland (Sand)
- Calcareous Fen (Southeastern)
- Dry Barrens Prairie (Southern)
- Dry Bedrock Bluff Prairie (Southern)
- Dry Sand - Gravel Oak Savanna (Southern)
- Dry Sand - Gravel Prairie (Southern)
- Dry Sandstone Cliff (Southern)
- Elm - Ash - Basswood Terrace Forest
- Elm - Basswood - Black Ash - (Blue Beech) Forest
- Mesic Limestone - Dolomite Cliff
- Native Plant Community, Undetermined Class
- Oak - Shagbark Hickory Woodland
- Red Oak - Sugar Maple - Basswood - (Bitternut Hickory) Forest
- Red Oak - White Oak - (Sugar Maple) Forest
- Red Oak - White Oak Forest
- Sedge Meadow
- Seepage Meadow/Carr
- Silver Maple - (Virginia Creeper) Floodplain Forest
- Silver Maple - Green Ash - Cottonwood Terrace Forest
- Southern Dry-Mesic Oak Forest
- Southern Mesic Maple-Basswood Forest
- Spikerush - Bur Reed Marsh (Northern)
- Spikerush - Bur Reed Marsh (Prairie)
- Sugar Maple - Basswood - (Bitternut Hickory) Forest
- Sugar Maple - Basswood - Red Oak - (Blue Beech) Forest

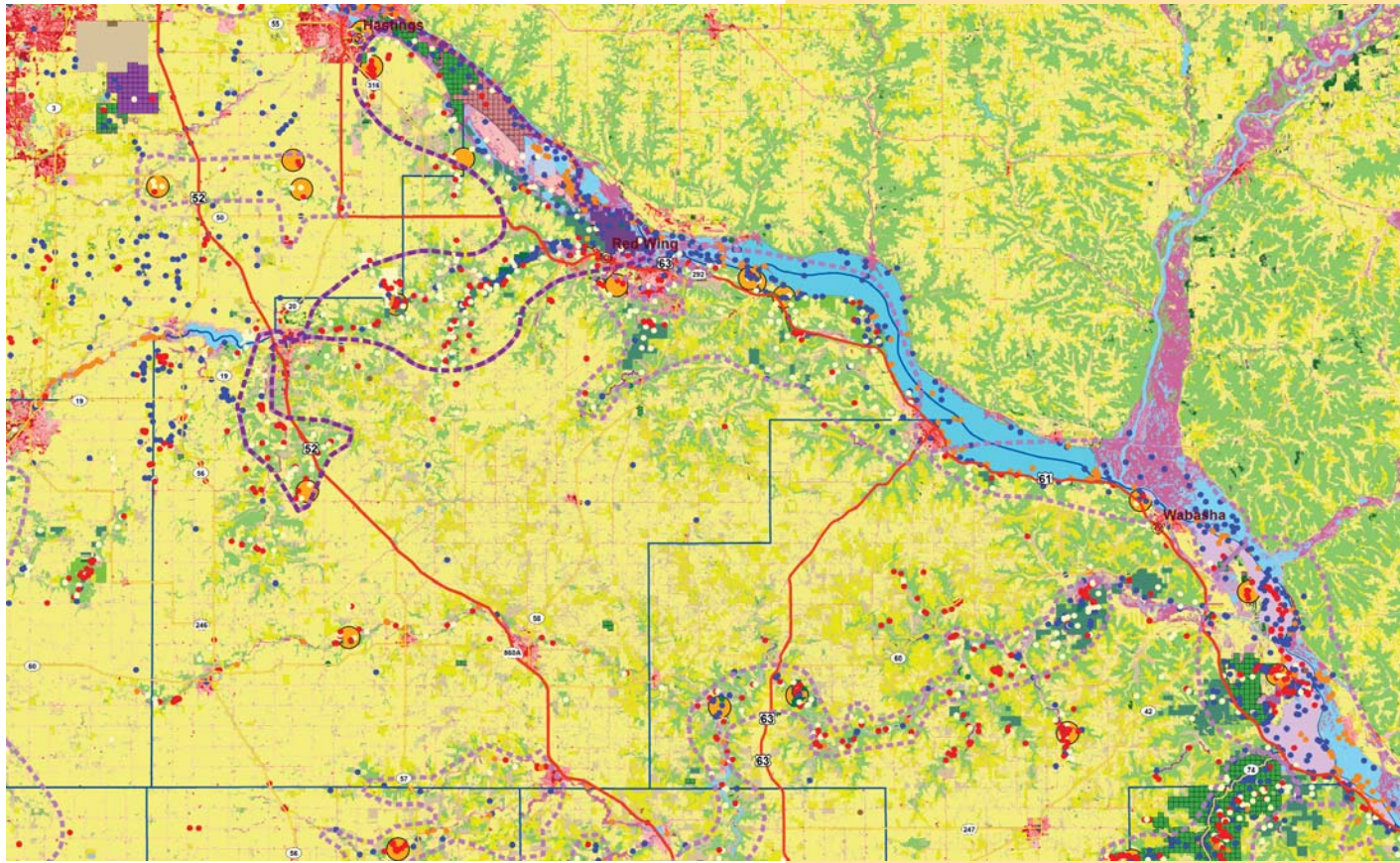
Ecological Evaluations:

- Sand Coulee Prairie
- Hastings
- Hastings SNA Addition
- Vermillion Bottoms
- Wood Turtle Flats
- Red Wind Bluffs
- River Terrace Prairie
- Little Cannon Woods



Lower Cannon-Vermillion Bottoms

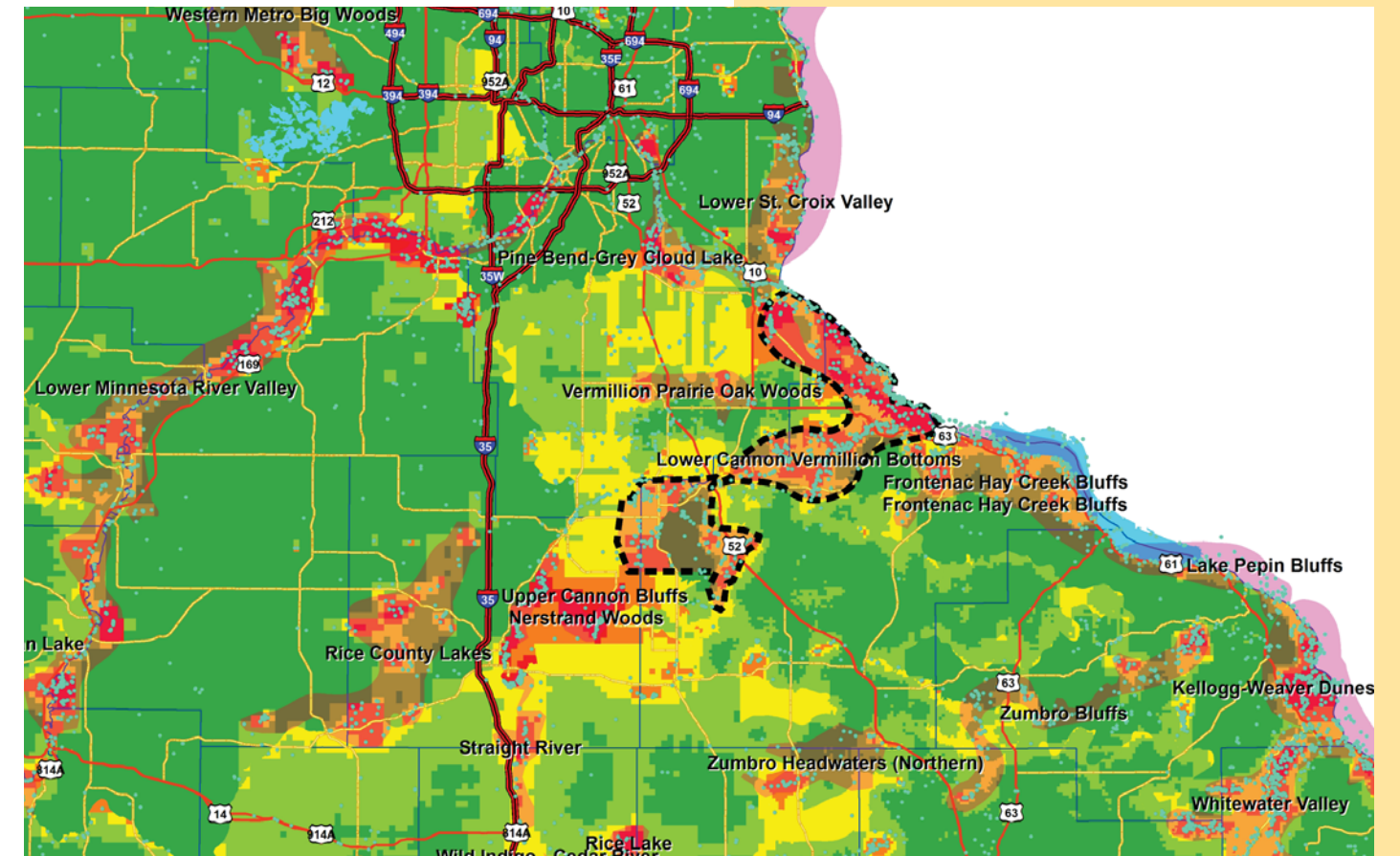
Ecological Evaluations, Land Cover, Public Ownership



Please see Legend at the front of the Opportunity Area Descriptions for a key to this map

Lower Cannon - Vermillion Bottoms

Marxan Prioritization, Element Occurrences



Legend

- Profiled COA
- Conservation Opportunity Area
- Rare Feature
- County Boundary
- Large Lake

Marxan Conservation Prioritization

- Lowest Priority
- Low Priority
- Medium Priority
- High Priority
- Highest Priority
- Interstate Highway
- U.S. Trunk Highway
- MN Trunk Highway