

Little Falls Outwash Moraine

Conservation Challenges:

- *Urbanization
- *Conversion to agricultural uses
- *Changes in agricultural practices
- *Increased draitiling makes stream flow more flashy, reduces groundwater
- *Fluctuating/declining groundwater levels
- *Invasive spp.: Buckthorns, Eurasian honeysuckle, garlic mustard, leafy spurge, EAB
- *Habitat fragmentation
- *Agricultural water pollutants/sedimentation

Conservation Opportunities:

- * Watershed is engaged in natural resource management planning

Existing Conservation Network:

State Parks:

State Forests:

SNAs: Englund Ecotone

Wildlife Management Areas:

Crane Meadows
Rice-Skunk
Rice Area Sportmen's Club
Sartell

National Wildlife Refuge:

Crane Meadow

Rare Species:

American Bittern
Bald Eagle
Beach-heather
Blanding's Turtle
Blunt Sedge
Creek Heelsplitter
Eastern Hognose Snake
Greater Prairie-chicken
Hill's Thistle
Loggerhead Shrike
Marginated Rush
Nelson's Sparrow
Old Field Toadflax
Plains Pocket Mouse
Sandhill Crane
Tuberclcd Rein-orchid
Upland Sandpiper
Wilson's Phalarope



Little Falls Outwash Moraine Opportunity Area

Ecological Significance:

The Little Falls Outwash Moraine is located along the eastern fringe of the Mississippi floodplain east of Little Falls. It's a diverse landscape and contains over 20 mapped types of native plant communities. Community types vary from Dry Barrens Oak Savanna and Dry Sand - Gravel Savanna to wet prairies, fens, and Black Ash-Yellow Birch-Red Maple-Basswood Swamps and Jack Pine woodlands. The OA is located within the transitional area between the Eastern Broadleaf Forest and the coniferous forests of Northern Minnesota. The continuum of moisture gradients and community types provide some opportunities for preserving diverse landscapes that are closely juxtaposed including some of the southernmost extensions of jack pine woodland.



Counties:

Morrison

Rare Native Plant Communities:

Dry Barrens Oak Savanna (Southern), Oak Subtype
Dry Barrens Prairie (Southern)
Dry Sand - Gravel Oak Savanna (Southern)
Dry Sand - Gravel Prairie (Southern)
Sedge Meadow, Tussock Sedge Subtype
Seepage Meadow/Carr
Southern Dry Savanna
Wet Prairie (Southern)

Ecological Evaluations:

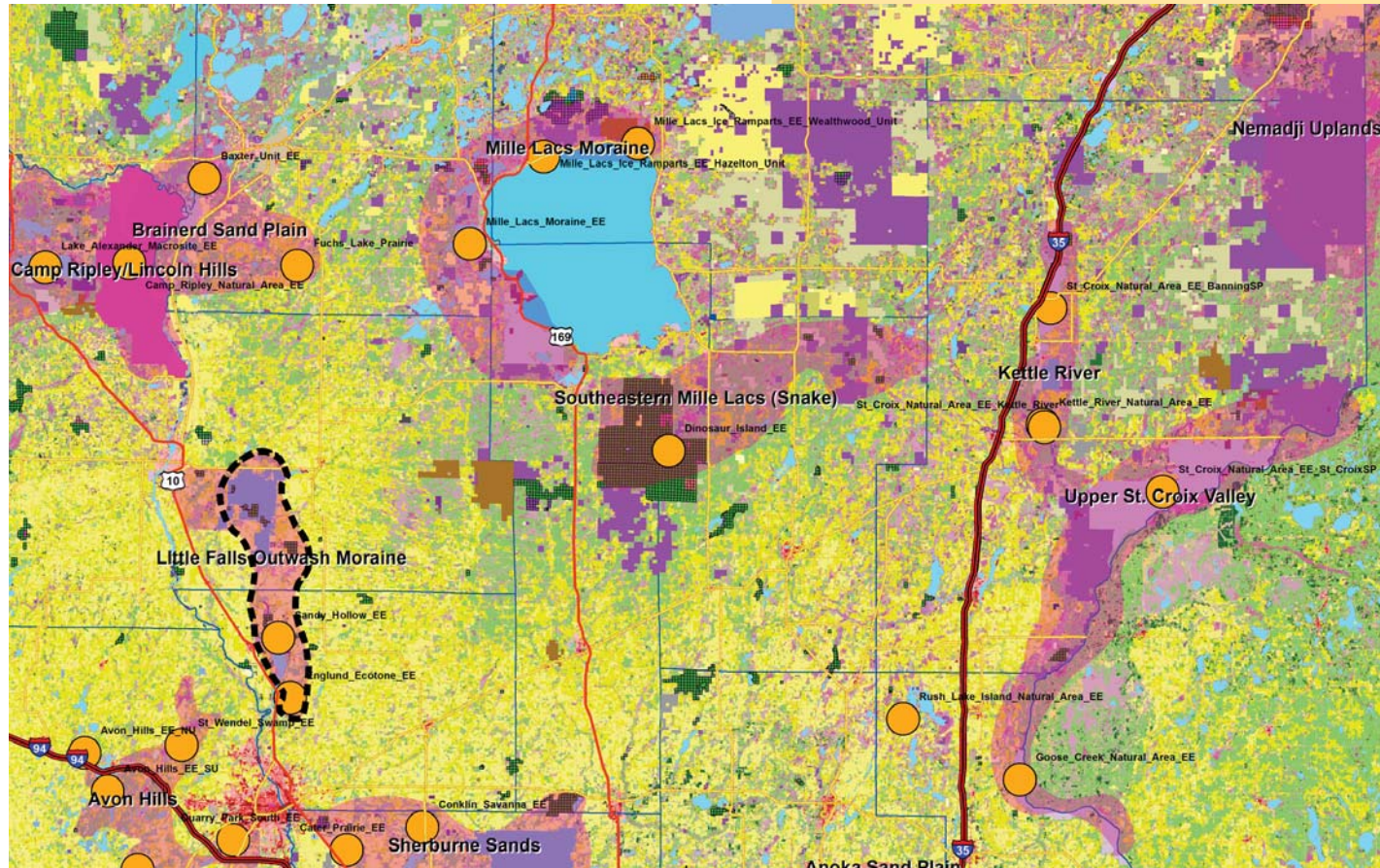
Englund Ecotone
Sandy Hollow



Photo courtesy of friendsofcranemeadow.com

Little Falls Outwash Moraine

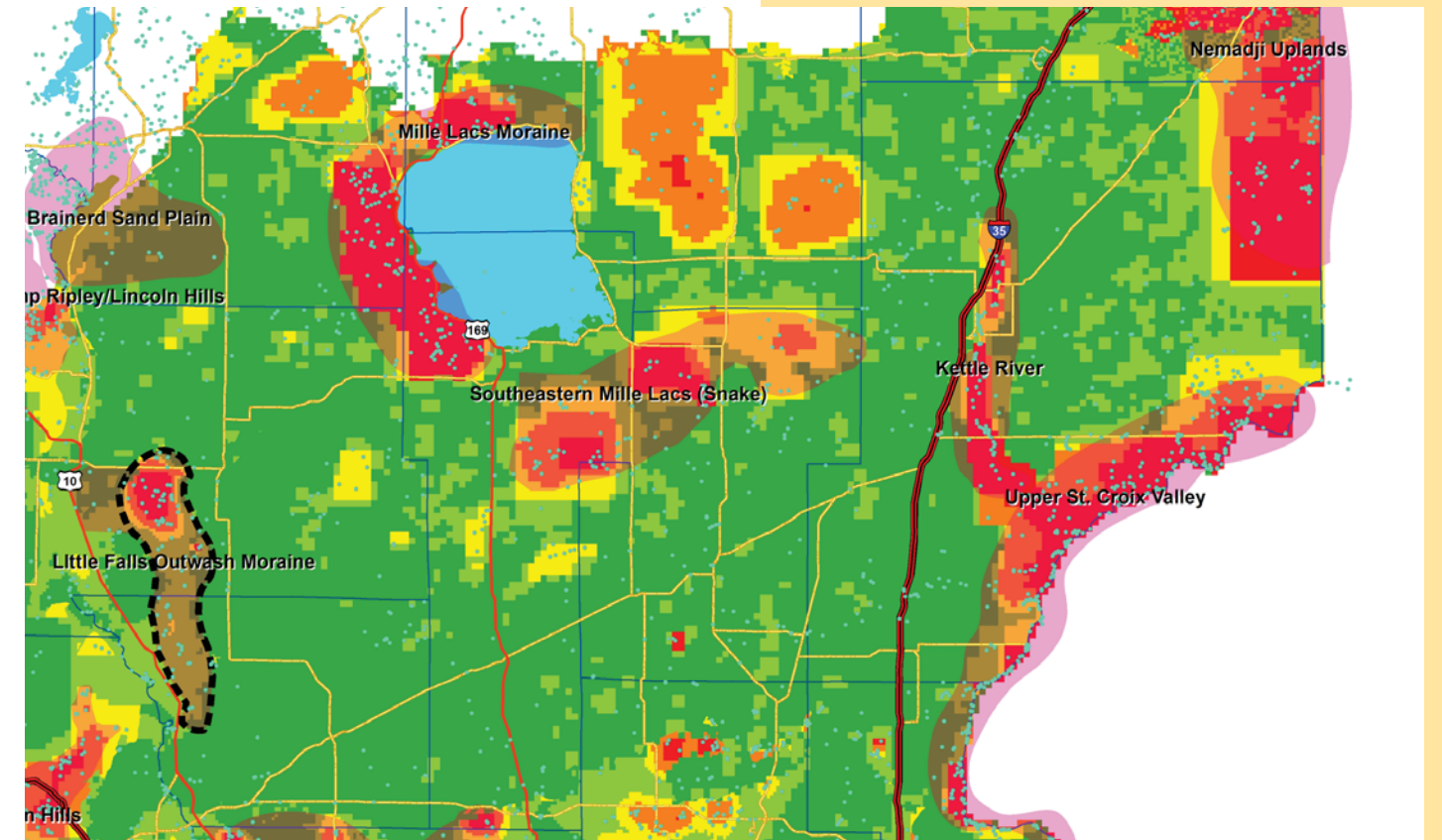
Ecological Evaluations, Land Cover, Public Ownership



Please see Legend at the front of the Opportunity Area Descriptions for a key to this map

Little Falls Outwash Moraine

Marxan Prioritization, Element Occurrences



Legend

- Profiled COA
- Conservation Opportunity Area
- Rare Feature
- County Boundary
- Large Lake

Marxan Conservation Prioritization

- Lowest Priority
- Low Priority
- Medium Priority
- High Priority
- Highest Priority
- Interstate Highway
- U.S. Trunk Highway
- MN Trunk Highway