

Conservation Challenges:

- * Conversion to timber and mining uses
- * Changes in timber practices
- * Fluctuating/declining groundwater levels
- * Invasive spp.: Buckthorns, Eurasian honeysuckle, garlic mustard, EAB
- * Habitat fragmentation
- * Lumber, mining, and agricultural water pollutants/sedimentation
- * surface, streambank, lake erosion
- * Thermal impacts from human and beaver activities

Conservation Opportunities:

- * Watershed is engaged in natural resource management planning
- * County Tax Forfeit Land
- * Large amount of public land

Existing Conservation Network:

National Forests: Superior

State Forests: Pat Bayle
Finland

SNAs:

Aquatic Management Areas: Cross River
Cedar Creek
Poplar River

Fisheries Management Areas: Cedar Lake

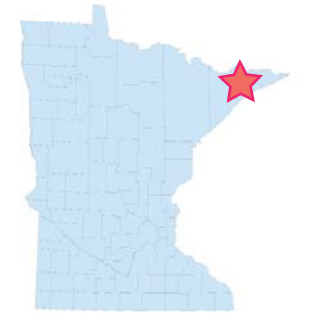
Rare Species:

Angel's Hair Lichen	Rock Vole
Awlwort	Small Shinleaf
Bald Eagle	Small White Water-lily
Barren Strawberry	Smoky Shrew
Black-throated Blue Warbler	Smooth lungwort
Bog Rush	Sooty-colored Beak-rush
Boreal Owl	Vasey's Pondweed
Carolina Spring-beauty	
Club-spur Orchid	
Concentric Ring Lichen	
Eastern candlewax lichen	
Eastern Heather Vole	
Few-flowered Spike-rush	
Lapland Buttercup	
Lavender Bladderwort	
Leafless Water Milfoil	
Least Moonwort	
Matricary Grape fern	
Methuselah's Beard Lichen	
Michaux's Sedge	
Michigan Moonwort	
Montane Yellow-eyed Grass	
Moschatel	
Nabokov's Blue	
New England Sedge	
Northern Comandra	
Pale Moonwort	

Lake-Cook County Line

Opportunity Area

Ecological Significance: The Lake-Cook County Line OA encompasses a number of large biodiversity sites of outstanding significance. Some the sites that are included are Soda Lake Hardwoods, Cedar Lake Lowlands, Maggie's Hog, Snowy Retreat Hills, Timber Lakes, and Nabokov's Outwash. While most of the Opportunity Area is publicly-held forest land, potential threats to forests, wetlands and other water resources are posed by the expansion of agricultural, silvicultural, or subsurface extraction activities in the area.



Counties:

Lake
Cook

Rare Native Plant Communities:

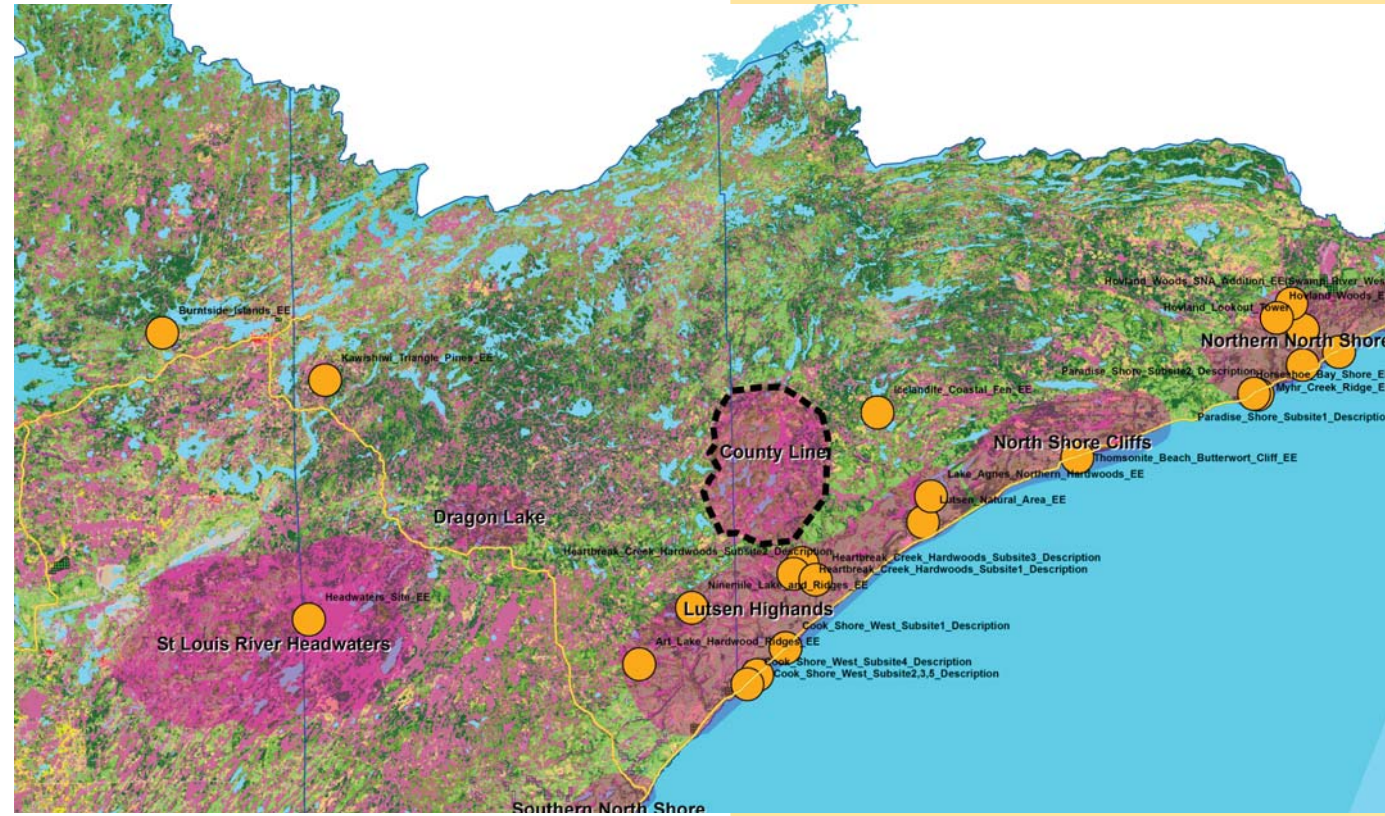
No communities identified with the Rare Features database. However, there are 38 Native Plant Community types and subtypes mapped within the area.

Ecological Evaluations:



Lake-Cook County Line

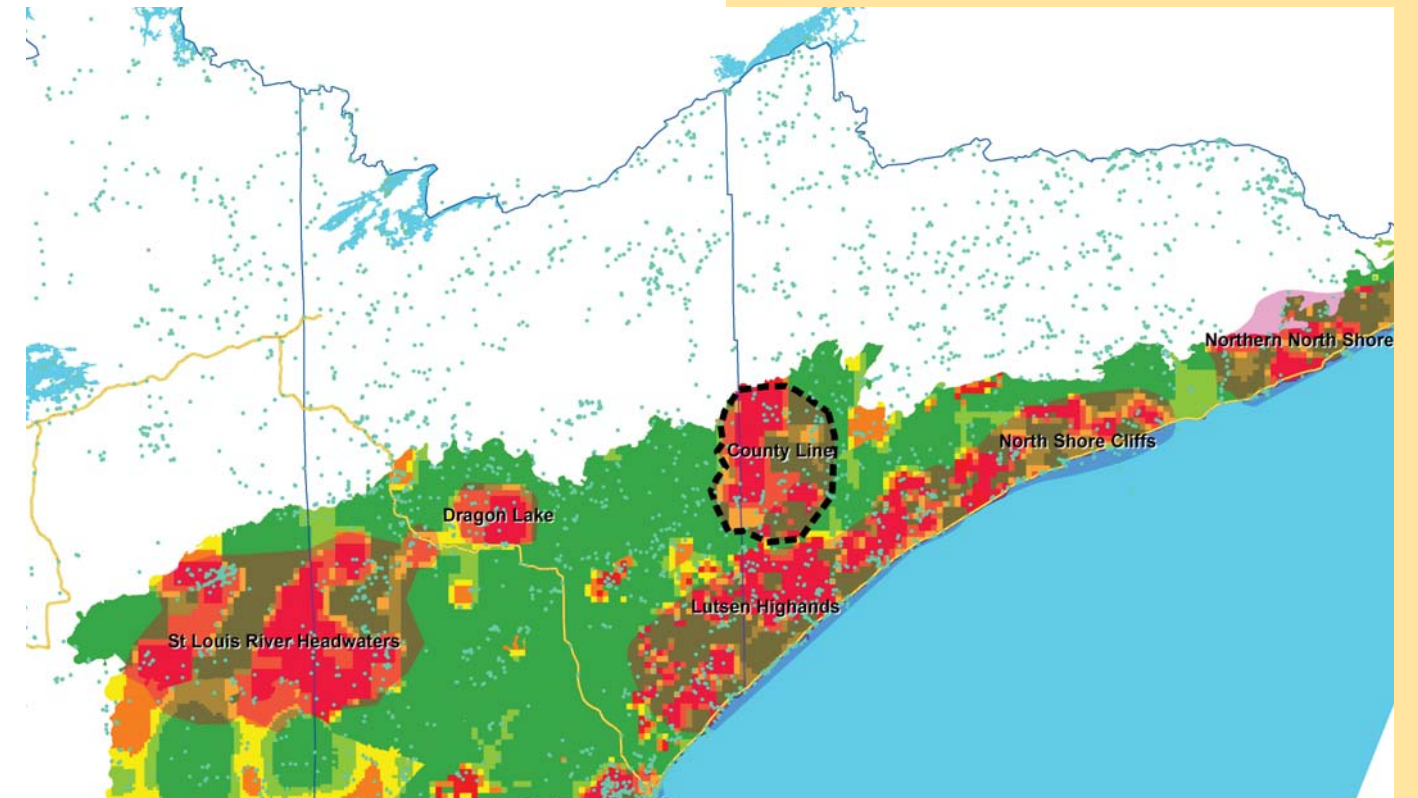
Ecological Evaluations, Land Cover, Public Ownership







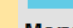








Please see Legend at the front of the Opportunity Area Descriptions for a key to this map

Lake-Cook County Line

Marxan Prioritization, Element Occurrences



Legend

-  Profiled COA
 -  Conservation Opportunity Area
 -  Rare Feature
 -  County Boundary
 -  Large Lake
- Marxan Conservation Prioritization**
-  Lowest Priority
 -  Low Priority
 -  Medium Priority
 -  High Priority
 -  Highest Priority
 -  Interstate Highway
 -  U.S. Trunk Highway
 -  MN Trunk Highway