

Kittson-Roseau Aspen Parkland

Conservation Challenges:

- *Conversion to agricultural uses
- *Changes in agricultural practices
- *Increased draitiling makes stream flow more flashy, reduces groundwater
- *Fluctuating/declining groundwater levels
- *Invasive spp.: Buckthorns, Eurasian honeysuckle, garlic mustard, leafy spurge, EAB
- *Habitat fragmentation
- *Agricultural water pollutants/sedimentation
- *Fire-dependent communities are likely to decline due to difficulty in restoring natural fire regimes

Conservation Opportunities:

- * Minnesota Prairie Conservation Plan

Rare Features:

- | | |
|----------------------------|------------------------------|
| Alkali Cord-grass | Least Moonwort |
| Alkali Grass | Long-stalked Chickweed |
| American Bittern | Louisiana Broomrape |
| Assiniboia Skipper | Macoun's Gentian |
| Baird's Sparrow | Marbled Godwit |
| Bald Eagle | Matricary Grapefern |
| Beach-heather | McCalla's Willow |
| Black Grass | Nelson's Sparrow |
| Black Sandshell | Northern Androsace |
| Blanket-flower | Northern Gentian |
| Blunt Sedge | Northern Singlespike Sedge |
| Clinton's Bulrush | Oat-grass |
| Clustered Broomrape | Plains Reedgrass |
| Creek Heelsplitter | Powesheik Skipper |
| Creeping Juniper | Prairie Moonwort |
| Dakota Skipper | Prairie Vole |
| Drummond's Campion | Sandhill Crane |
| Dry Sedge | Short-eared Owl |
| English Sundew | Shortray Fleabane |
| Felwort | Small-leaved Pussytoes |
| Few-flowered Spike-rush | Small White Lady's slipper |
| Forster's Tern | Twig-rush |
| Frenchman's Bluff Moonwort | Upland Sandpiper |
| Garber's Sedge | Wilson's Phalarope |
| Garita Skipper | Wind Deposition (Quaternary) |
| Hair-like Sedge | Yellow Rail |
| Hall's Sedge | |
| Holboell's Rock-cress | |
| Horned Grebe | |
| Lake Sturgeon | |

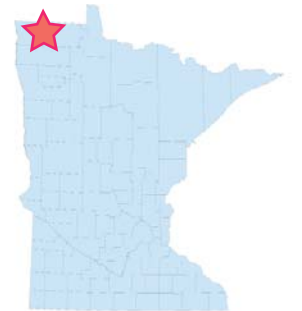
Existing Conservation Network:

- | | |
|--|---|
| State Parks: | Lake Bronson |
| State Forests: | |
| SNAs: | Lake Bronson Pine Creek Peatland
Sprague Creek Peatland
Two Rivers Aspen Prairie Parkland |
| Wildlife Management Areas: | Beaches Lake
Caribou
Devil's Playground
Pelan
Skull Lake
Twin Lakes |
| USFWS National Wildlife Refuge: | Agassiz |
| Private: | Wallace C. Dayton Conservation Area
Falcon's Nest Juneberry Ridge |

Kittson-Roseau Parkland Opportunity Area

Ecological Significance:

The Aspen Parkland is a transitional area of aspen, balsam poplar, oak and ash woodland and grassland that provides a dynamic interface between the prairie and the Boreal Forest. It encompasses a mosaic of wetlands, grasslands, brushlands, and woodlands that are dominated by quaking aspen in the plains of northwestern Minnesota, and the southern areas of Manitoba, Saskatchewan and Alberta. Aspen is typically a pioneering species that is quickly replaced by climax species. However, here it is a self-perpetuating community and usually doesn't senesce into other forest types as it responds to disturbances from fire, climate vagaries, and land use. It forms a wider ecotone than in other locations farther to the south, but it becomes much wider and rotates its orientation to more of an east-west axis in Canada. *This landscape--worthy of Province designation--may be vulnerable to a warming climate. Preserving this landscape will add to the resilience of this unique*



Counties:

- Kittson
- Roseau

Rare Native Plant Communities:

- Aspen - (Cordgrass) Woodland
- Aspen - (Prairie Herb) Woodland
- Aspen Openings (Northern)
- Basin Meadow/Carr
- Bur Oak - (Prairie Herb) Woodland
- Dry Barrens Oak Savanna (Northern)
- Dry Barrens Prairie (Northern)
- Dry Sand - Gravel Oak Savanna (Northern)
- Dry Sand - Gravel Prairie (Northern)
- Green Ash - Bur Oak - Elm Forest
- Lowland Black Ash - Aspen - Balsam Poplar Forest
- Mesic Brush-Prairie (Northern)
- Mesic Prairie (Northern)
- Northwestern Dry-Mesic Oak Woodland
- Prairie Meadow/Carr
- Prairie Rich Fen
- Rich Fen (Mineral Soil)
- Rich Fen (Peatland)
- Seepage Meadow/Carr
- Wet Brush-Prairie (Northern)
- Willow - Dogwood Shrub Swamp

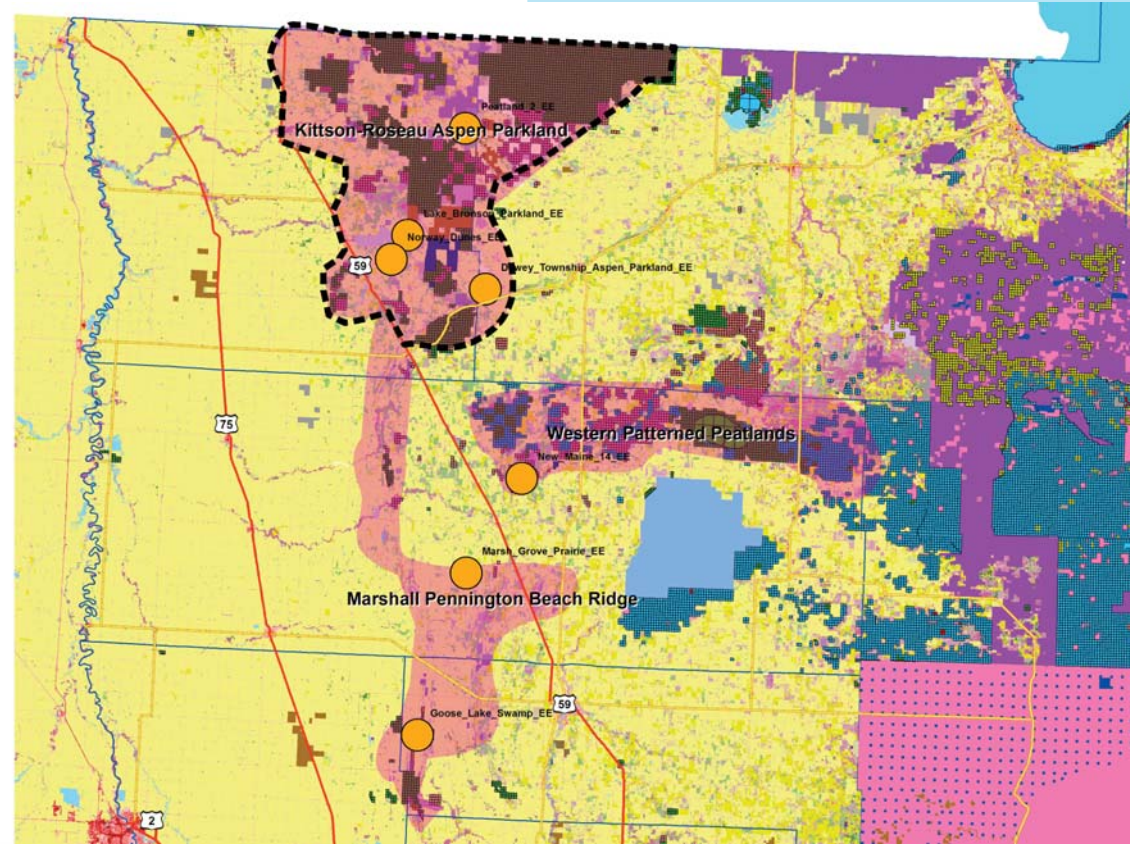
Ecological Evaluations:

- Dewey Thompson Aspen Parkland
- Lake Bronson Parkland
- Norway Dunes
- Peatland 2



Kittson-Roseau Parkland

Ecological Evaluations, Land Cover, Public Ownership



Please see Legend at the front of the Opportunity Area Descriptions for a key to this map

Kittson-Roseau Parkland

Marxan Prioritization, Element Occurrences

