

Kettle River

Conservation Challenges:

- *Urbanization
- *Conversion to agricultural uses
- *Changes in agricultural practices
- *Increased dewatering makes stream flow more flashy, reduces groundwater
- *Fluctuating/declining groundwater levels
- *Invasive spp.: Buckthorns, Eurasian honeysuckle, garlic mustard, leafy spurge, EAB
- *Habitat fragmentation
- *Agricultural water pollutants/sedimentation
- *Fire-dependent communities are likely to decline due to difficulty in restoring natural fire regimes

Conservation Opportunities:

- * Watershed is engaged in natural resource management planning

Existing Conservation Network:

- State Parks: Banning
- State Forests: Chengwatana
- SNAs: Kettle River
- Wildlife Management Areas: Kettle River
- National Wild and Scenic River: St. Croix

Rare Features:

- | | |
|---|-----------------------------|
| American Water-pennywort | Round Pigtoe |
| Appalachian Fir-clubmoss | Sandhill Crane |
| Bald Eagle | Southern Brook Lamprey |
| Black Sandshell | Spike |
| Blanding's Turtle | Stream Erosion (Quaternary) |
| Blunt-lobed Grape fern | Trumpeter Swan |
| Bog Bluegrass | Upland Sandpiper |
| Cliff Goldenrod | Western Fox Snake |
| Creek Heelsplitter | Wood Turtle |
| Eastern Hemlock | |
| Elktoe | |
| Fluted-shell | |
| Gilt Darter | |
| Hickorynut | |
| Intermediate Sedge | |
| Lake Sturgeon | |
| Least Moonwort | |
| Louisiana Waterthrush | |
| Matricary Grape fern | |
| Mixed Unit or Sequence (Middle and Upper Proterozoic) | |
| Mucket | |
| Necklace Spike Sedge | |
| Northern Brook Lamprey | |
| Proglacial River Erosion (Quaternary) | |
| Purple Wartyback | |
| Sedimentary Structure (Upper Proterozoic) | |
| Sedimentary Unit or Sequence (Upper Proterozoic) | |

Kettle River Opportunity Area

Ecological Significance:

The Kettle River Opportunity Area is located within the tension zone between the Eastern Broadleaf Forest and the Laurentian Mixed Coniferous/Broadleaf forest. Fairly abrupt juxtapositions are present between southern communities (dry-mesic forest, dry barrens oak savanna) and northern boreal forest communities of spruce and fir. These community examples from both southern and northern Minnesota are located close to the limit of their ranges, and may possess critical genotypes of species that have fringe characteristics. The Kettle River OA is also a scenic resource, particularly in the vicinity of Banning State Park where the geology has created a series of waterfalls and rapids with names full of imagery such as Hell's Gate, Dragon's Tooth, Mother's Delight and Blueberry Slide.



Counties:

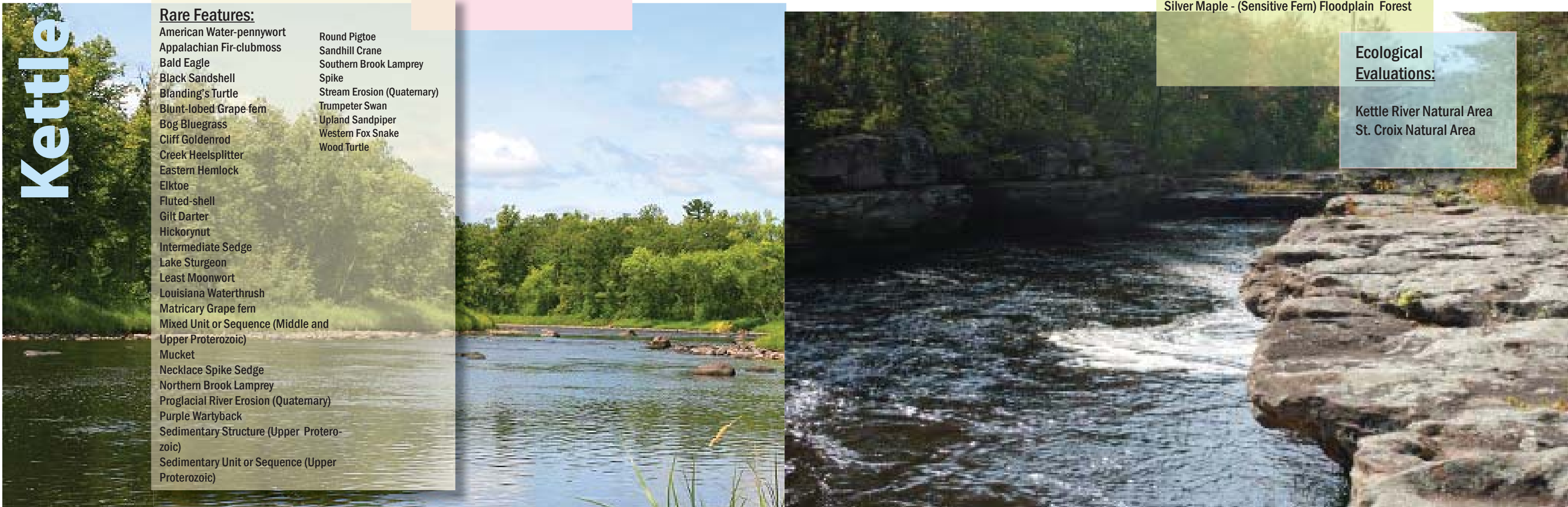
- Chisago
- Pine

Rare Native Plant Communities:

Silver Maple - (Sensitive Fern) Floodplain Forest

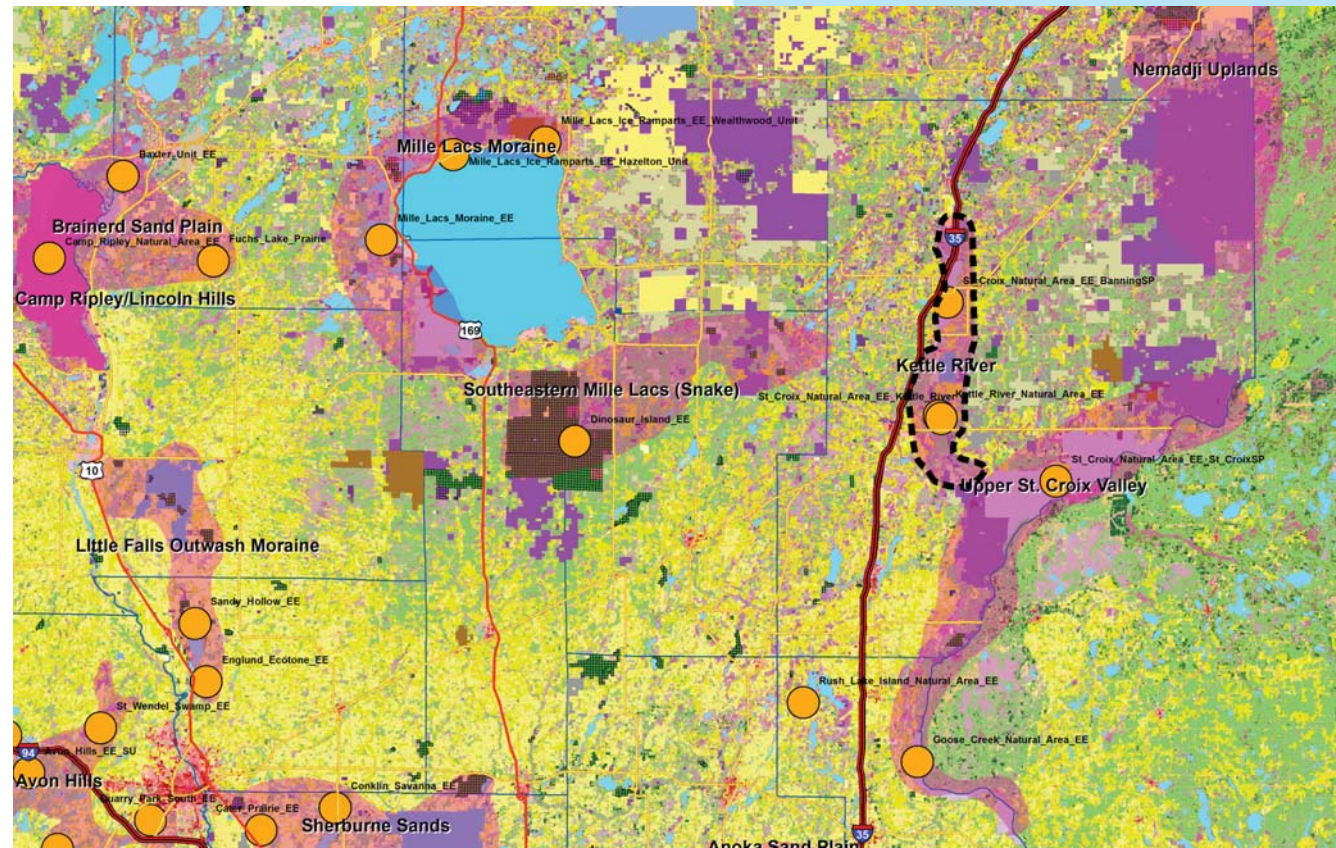
Ecological Evaluations:

- Kettle River Natural Area
- St. Croix Natural Area



Kettle River

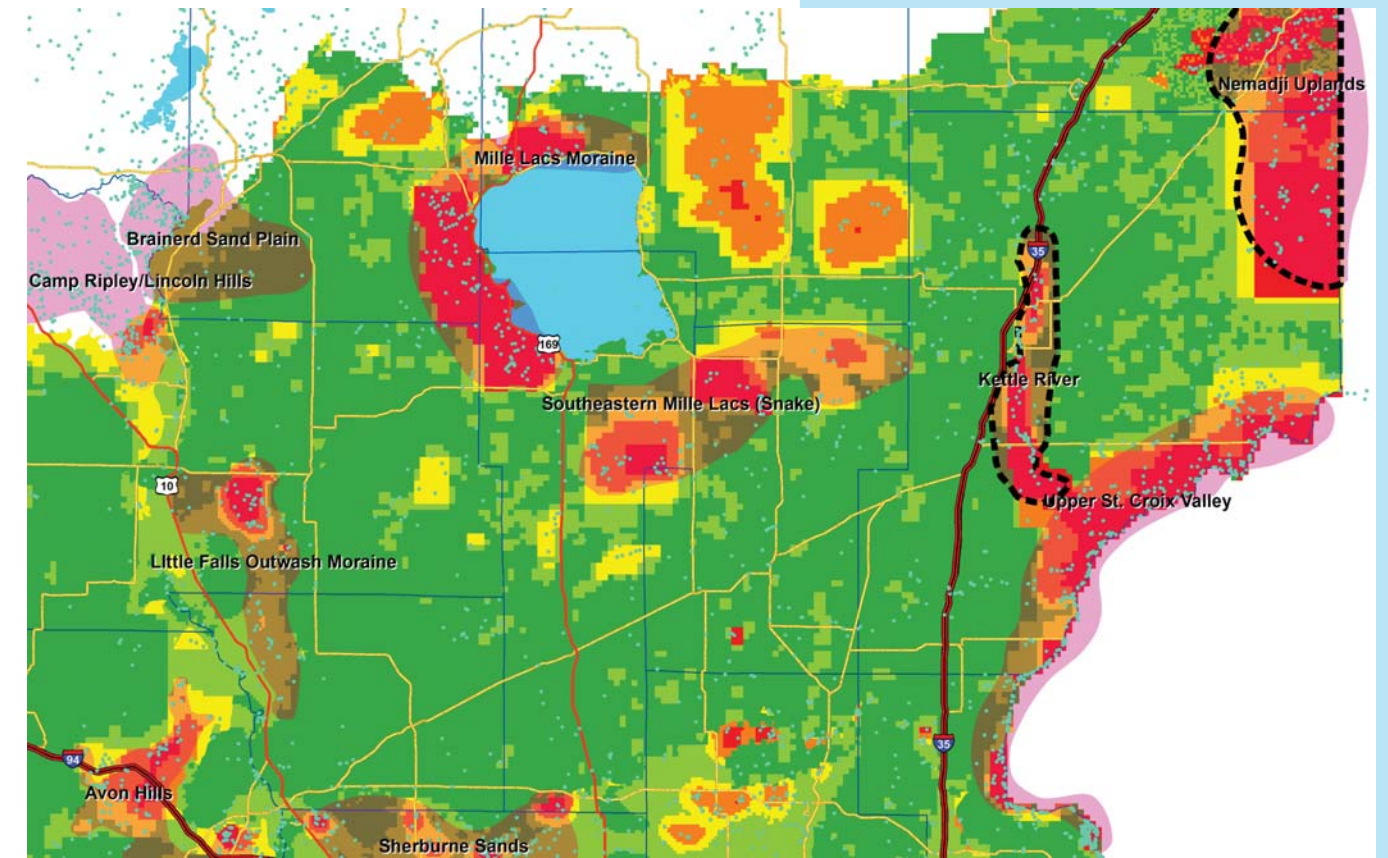
Ecological Evaluations, Land Cover, Public Ownership



Please see Legend at the front of the Opportunity Area Descriptions for a key to this map

Kettle River

Marxan Prioritization, Element Occurrences



Legend

- Profiled COA
 - Conservation Opportunity Area
 - Rare Feature
 - County Boundary
 - Large Lake
- Marxan Conservation Prioritization**
- Lowest Priority
 - Low Priority
 - Medium Priority
 - High Priority
 - Highest Priority
 - Interstate Highway
 - U.S. Trunk Highway
 - MN Trunk Highway