

Kellogg Weaver Dunes

Conservation Challenges:

- *Conversion to agricultural uses
- *Changes in agricultural practices
- *Conversion to sand mining
- *Deforestation/logging on bluffs
- *Woody encroachment into prairies
- *Urbanization and recreational development
- *Increased draintiling makes stream flow more flashy, reduces groundwater
- *Invasive spp.: Buckthorns, Eurasian honeysuckle, garlic mustard, leafy spurge, EAB
- *Habitat fragmentation
- *Valley bottoms prone to high-volume floods of increased frequency
- *The Mississippi Valley is a portal for new species to migrate into the state (native to N. America and non-native)
- *Fire-dependent communities are likely to decline due to difficulty in restoring natural fire regimes



Conservation Opportunities:

- * Conservation partners along Mississippi Flyway

Existing Conservation Network:

State Parks:

John A. Latsch

State Forests:

Richard J. Dorer Memorial Hardwood

SNA: Kellogg Weaver Dunes

Aquatic Management Areas:

Wildlife Management Areas:

McCarthy Lake

Pool 4

Thorpe

Reinvest in Minnesota: Yes

Rare Features:

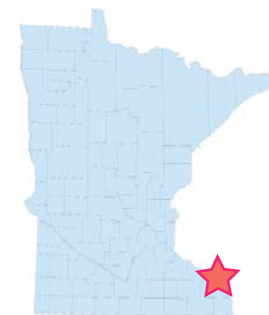
Acadian Flycatcher	Goat's-rue	Purple Sand-grass
American Bittern	Gopher snake	Raven's Foot Sedge
American Ginseng	Gray's Sedge	Red-shouldered Hawk
Bald Eagle	Green Dragon	Regal Fritillary
Bat Concentration	Henslow's Sparrow	Rhombic-petaled Evening Primrose
Beach-heather	Hickorynut	Rock Pocketbook
Bell's Vireo	Jewelled Shooting Star	Rough-seeded Fameflower
Black Buffalo	Jumping Spider (3 species)	Round Pigtoe
Black Sandshell	Lake Sturgeon	Sandhill Crane
Blanding's Turtle	Leonard's Skipper	Sea-beach Needlegrass
Blue Sucker	Lilia-leaved Twayblade	Sheepnose
Bur-marigold	Long-bearded Hawkweed	Shovelnose Sturgeon
Butterfly	Milk snake	Skipjack Herring
Buttonbush	Monkeyface	Smooth Rock Cress
Canada Frostweed	Mucket	Smooth Softshell
Catchfly Grass	Muskingum Sedge	Spike
Cattail Sedge	Mussel Sampling Site	Splendid Tiger Beetle
Cerulean Warbler	North American Racer	Stream Deposition (Holocene)
Clasping Milkweed	Old Field Toadflax	Swamp White Oak
Cliff Goldenrod	Ottoo Skipper	Sweet-smelling Indian-plantain
Common Gallinule	Ovate-leaved Skullcap	Timber Rattlesnake
Creeping Juniper	Paddle fish	Upland Sandpiper
Crystal Darter	Pallid Shiner	Walter's Barnyard Grass
Davis' Sedge	Peregrine Falcon	Washboard
Eastern Hognose	Persius Dusky Wing	Western Fox snake
Snake	Pirate Perch	White Wild Indigo
Ebonyshell	Pistolgrip	Widgeon-grass
Elephant-ear	Plains Pocket Mouse	Wind Deposition (Holocene)
Elktoe	Plains Wild Indigo	Wind Process (Holocene)
Forster's Tern	Pugnose Minnow	Wood Turtle
	Purple Cliff-brake	Yellow Bass
		Yellow-fruited Sedge



Photo courtesy of minnesotaseasons.org

Kellogg Weaver Dunes Opportunity Area

Dune landscapes are unusual in Minnesota: they are found in Duluth harbor, the Anoka Sand Plain, near the former glacial Lake Agassiz, and within a few major river floodplains in southern Minnesota. The dunes formed from the coarse alluvium deposited at the Chippewa and Zumbro Rivers along the Mississippi. Nearby deltas providing a steady source of sand. *The dunes are significant due to their 30-foot height, home to the largest nesting population of Blanding's Turtles in the nation, and their key habitat for a number of grassland birds that use the Mississippi Flyway.* A number of other rare prairie, wetland, and savanna plant and insect species are also present. The OA also includes the abutting forested bluffs that are at the edge of the floodplain. Adjoining waters of the Mississippi, downstream from Lake Pepin, provide better habitat for a number of mussels than areas upstream of Lake Pepin.



Counties:

Wabasha
Winona

Rare Native Plant Communities:

Black Ash - Sugar Maple - Basswood - (Blue Beech) Seepage Swamp
 Calcareous Fen (Southeastern)
 Cattail - Sedge Marsh (Northern)
 Dry Barrens Oak Savanna (Southern), Oak Subtype
 Dry Barrens Prairie (Southern)
 Dry Bedrock Bluff Prairie (Southern)
 Red Oak - Sugar Maple - Basswood - (Bitternut Hickory) Forest
 Red Oak - White Oak - (Sugar Maple) Forest
 Red Oak - White Oak Forest
 Sedge Meadow
 Seepage Meadow/Carr, Tussock Sedge Subtype
 Silver Maple - (Virginia Creeper) Floodplain Forest
 Silver Maple - Green Ash - Cottonwood Terrace Forest
 Spikerush - Bur Reed Marsh (Northern)
 Swamp White Oak Terrace Forest

Ecological Evaluations:

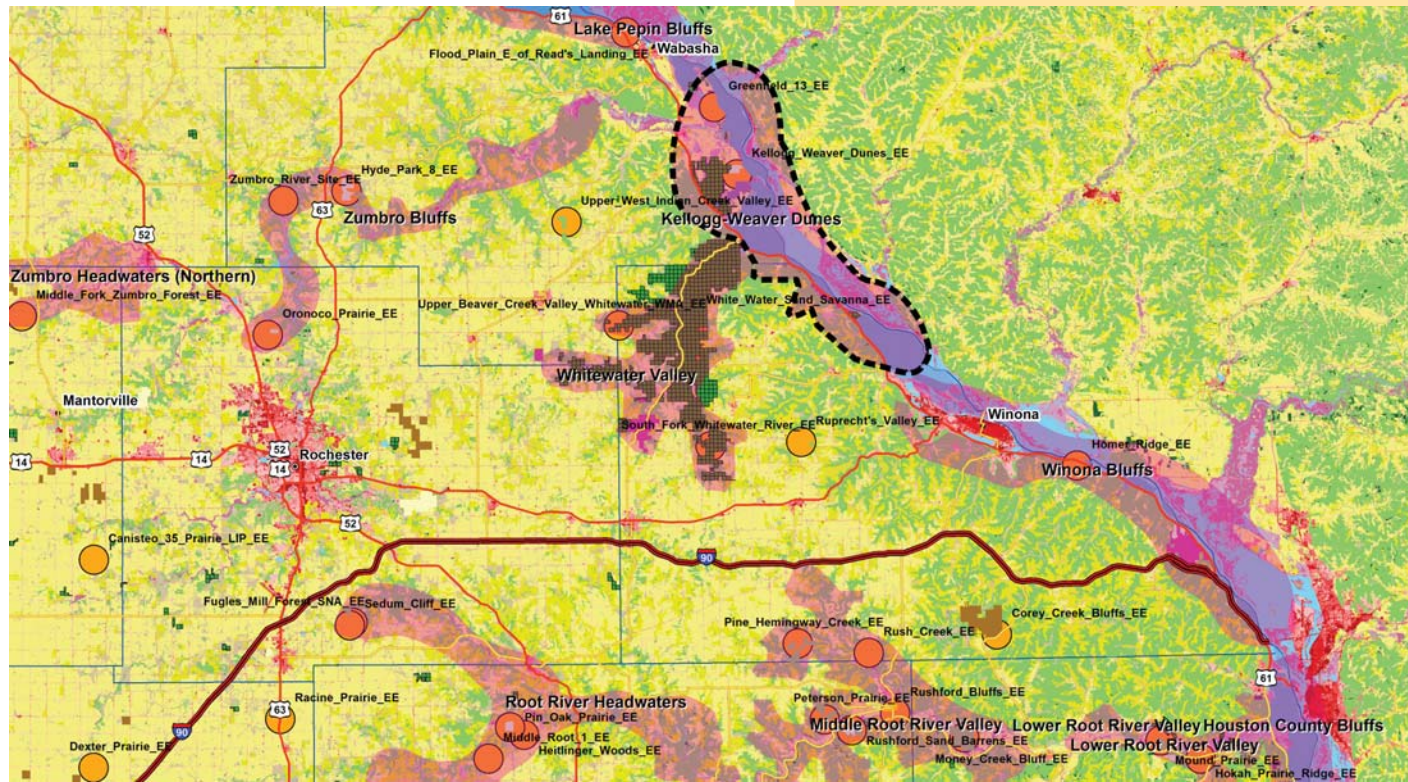
Kellogg Weaver Dunes
Greenfield 13



Photo courtesy of nature.org

Kellogg Weaver Dunes

Ecological Evaluations, Land Cover, Public Ownership



Please see Legend at the front of the Opportunity Area Descriptions for a key to this map

Kellogg Weaver Dunes

Marxan Prioritization, Element Occurrences

