

Conservation Challenges:

- *Conversion to agricultural uses
- *Changes in agricultural practices
- *Increased drantiling makes stream flow more flashy, reduces groundwater
- *Fluctuating/declining river evels
- *Invasive spp.: leafy spurge, buckthorn, garlic mustard, earthworms
- *Habitat fragmentation
- *Eutrophic lakes
- *Urbanization/lakeshore development
- *Fire-dependent communities are likely to decline due to difficulty in restoring natural fire regimes
- *Gravel mining
- *Increasing recreational pressure

Conservation Opportunities:

Existing Conservation Network:

State Parks:

State Forests:

SNAs:

Wildlife Management Areas:

Balgaard
Gustave-Melby
Inspiration Peak
Pelican Creek
Nycklemore
St. Olaf
Thornberg

Aquatic Management

Areas:

Melby Lake
Moses-
Stockhausen

Rare Species:

American Ginseng
Bald Eagle
Few-flowered Spike-rush
Forster's Tern
Hair-like Beak-rush
Henslow's Sparrow
Hill's Thistle
Hooded Warbler
Low Milk-vetch
Marsh Arrow-grass
Pawnee Skipper
Prairie Moonwort
Regal Fritillary
Red Three-awn
Red-shouldered Hawk
Sea Naiad
Sterile Sedge
Widgeon-grass
Wilson's Phalarope



Photo courtesy of Amanda Su

Inspiration Hills Opportunity Area

Ecological Significance:

Inspiration Hills Opportunity Area lies within the Alexandria Moraine which is a terminal moraine between the Wadena and Des Moines Lobes of the Wisconsinan glaciation. Interlobate terminal moraines can have a notable amount of relief with Inspiration Peak rising 400 feet above the surrounding plains. This is the highest point in western Minnesota outside of Buffalo Ridge. As a result of the topographic diversity, a number of biomes are present including lakes, wetlands, oak forest, Big Woods, and at higher elevations, prairies. It provides a strategic connection to the Red River Valley OAs and those in Central Minnesota. It is also within an area of Minnesota that sees considerable recreational use that may increase pressure on these resources.



Counties:

Douglas
Grant
Ottertail

Rare Native Plant Communities:

Calcareous Fen (Northwestern)
Dry Hill Prairie (Southern)
Dry Sand - Gravel Prairie (Southern)
Graminoid Poor Fen (Basin)
Pin Oak - Bur Oak Woodland

Ecological Evaluations:

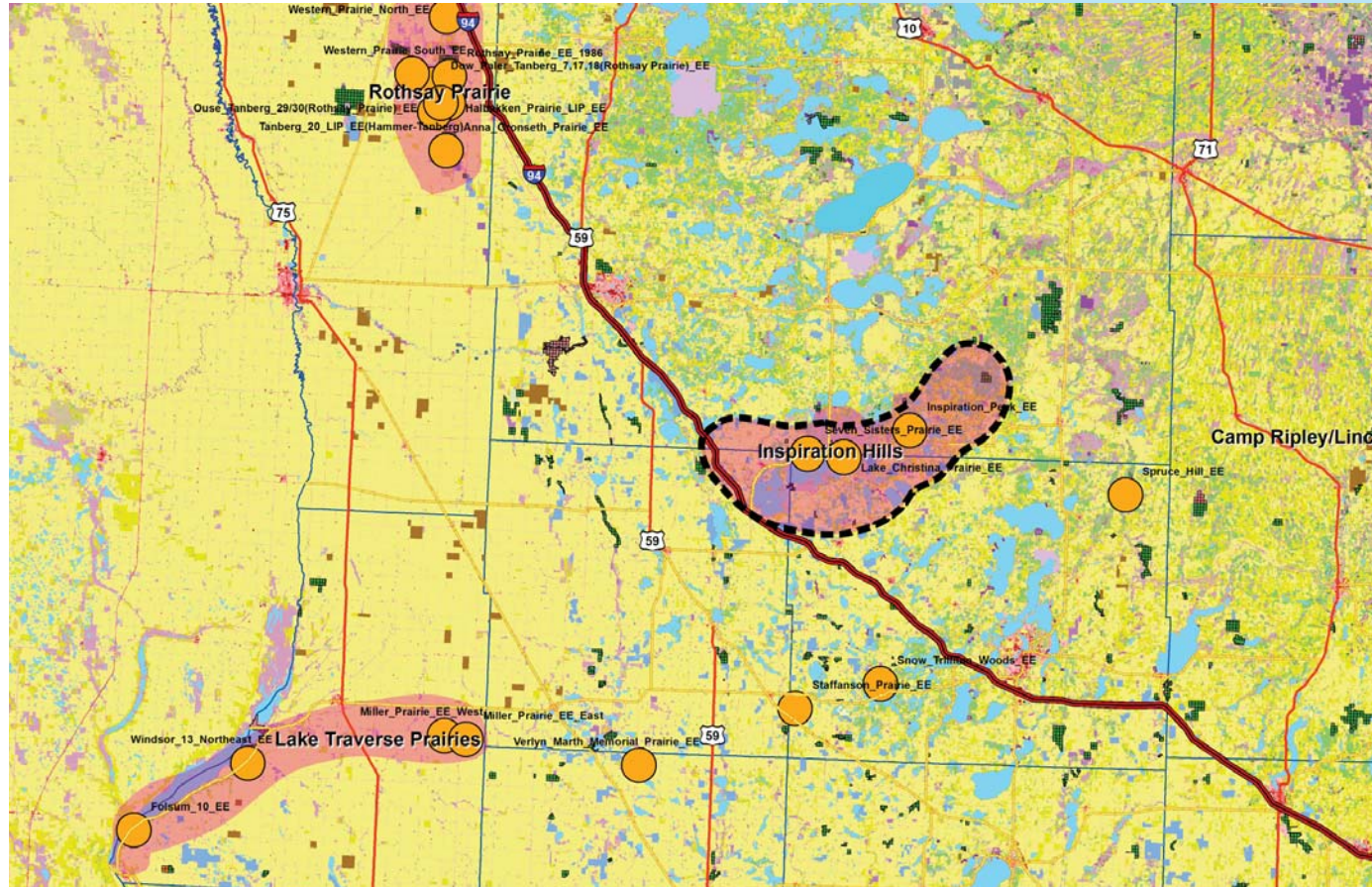
Inspiration Peak
Lake Christina Prairie
Seven Sisters Prairie



Photo courtesy of Amanda Su

Inspiration Hills

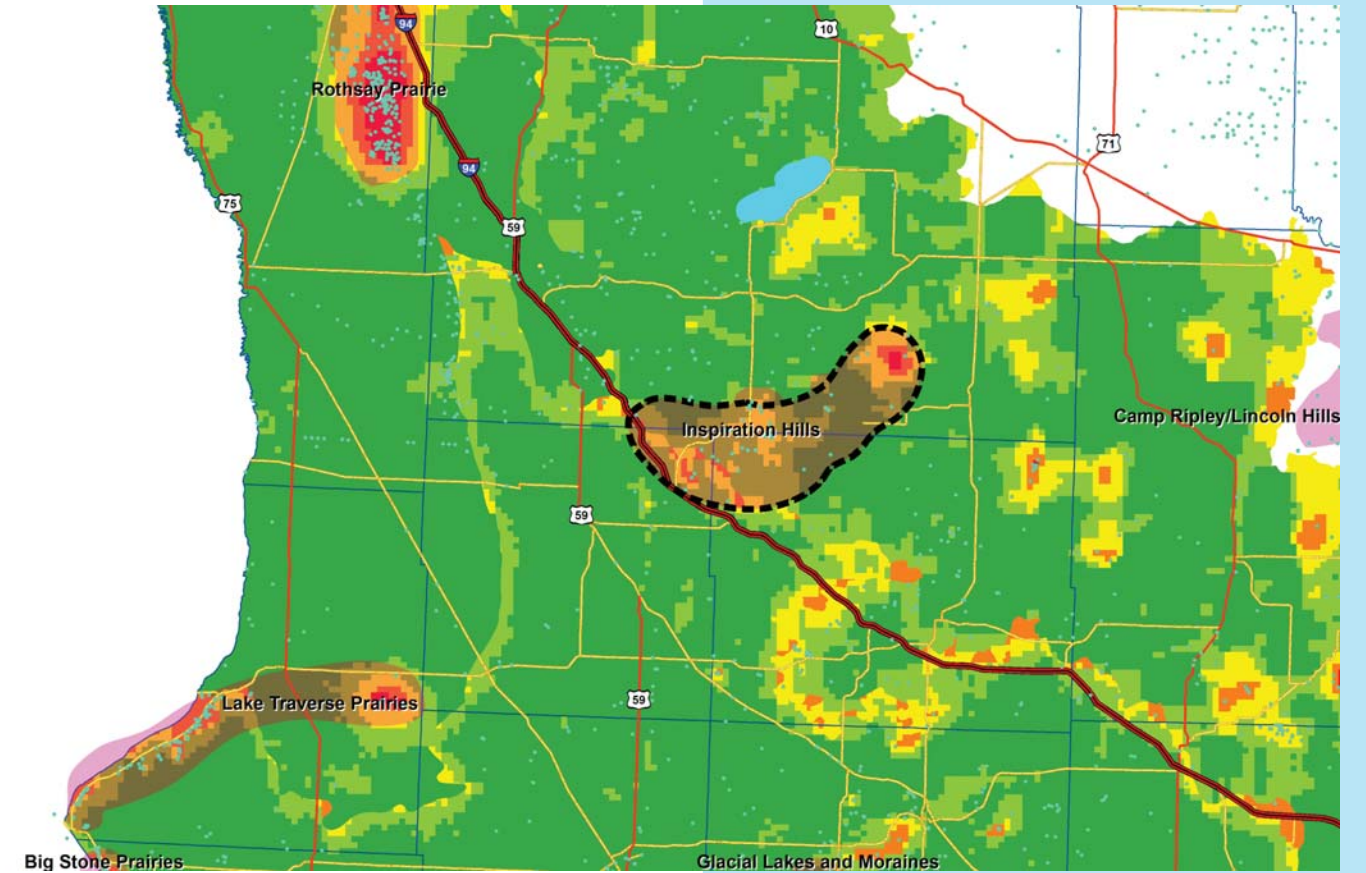
Ecological Evaluations, Land Cover, Public Ownership



Please see Legend at the front of the Opportunity Area Descriptions for a key to this map

Inspiration Hills

Marxan Prioritization, Element Occurrences



Legend

- Profiled COA
- Conservation Opportunity Area
- Rare Feature
- County Boundary
- Large Lake

Marxan Conservation Prioritization

- Lowest Priority
- Low Priority
- Medium Priority
- High Priority
- Highest Priority
- Interstate Highway
- U.S. Trunk Highway
- MN Trunk Highway