

Conservation Challenges:

- *Conversion to agricultural uses
- *Changes in agricultural practices
- *Increased draitiling makes stream flow more flashy, reduces groundwater
- *Waterways are more incised, with more alluvium, and higher turbidity
- *Invasive spp.: spotted knapweed, leafy spurge,
- *Habitat fragmentation
- *Wind farms
- *Groundwater pumping
- *Fire-dependent communities are likely to decline due to difficulty in restoring natural fire regimes

Conservation Opportunities:

- * Minnesota Prairie Conservation Plan

Existing Conservation Network:

State Forests:

SNAs:

Aquatic Management Areas:

Benton Lake

Wildlife Management Areas:

Altona

Sioux Lookout

Hole in the Mountain

Winter

Reinvest in Minnesota: Yes



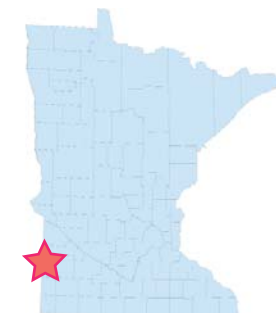
Rare Species:

Jumping Spider (2 species)	Powesheik Skipper
Blanding's Turtle	(possibly extirpated in 2013)
Chestnut-collared Longspur	Prairie Moonwort
Creek Heelsplitter	Prairie Vole
Dakota Skipper	Red Three-awn
Few-flowered Spike-rush	Regal Fritillary
Hair-like Beak-rush	Richardson's Ground Squirrel
Henslow's Sparrow	Small White Lady's-slipper
Iowa Skipper	Small-leaved Pussytoes
Loggerhead Shrike	Smoothish Orach
Low Milk-vetch	Soft Goldenrod
Marsh Arrow-grass	Topeka Shiner
Missouri Milk-vetch	Upland Sandpiper
Northern Grasshopper Mouse	Western Harvest Mouse
Ottoe Skipper	Western White Prairie-clover
Pawnee Skipper	
Plains Reedgrass	

Hole-in-the-Mountain/Flandreau Opportunity Area

Ecological Significance:

The Hole-in-the-Mountain/Flandreau Opportunity Area is situated near the South Dakota border along the valley of the Flandreau Creek. The valley is an example of the well-developed drainages in extreme southwestern Minnesota--a special landscape in a portion of the state typically known for its level terrain. The is one of the many drainages from the Bemis Moraine formed by glacial meltwater streams. The hills in this OA provide special character to the land, and more diversity of types of plant communities than would normally have been encountered in the pre-settlement landscape, which includes examples of dry hill prairie and dry sand - gravel prairies. This OA is part of a potential corridor that would stretch from the Chanarambie Creek Valley to the Shaokatan Prairies at the boundary of the Inner Coteau and the Coteau Moraine.



Counties:

Pipestone
Lincoln

Rare Native Plant Communities:

Calcareous Fen (Southwestern)
Dry Hill Prairie (Southern)

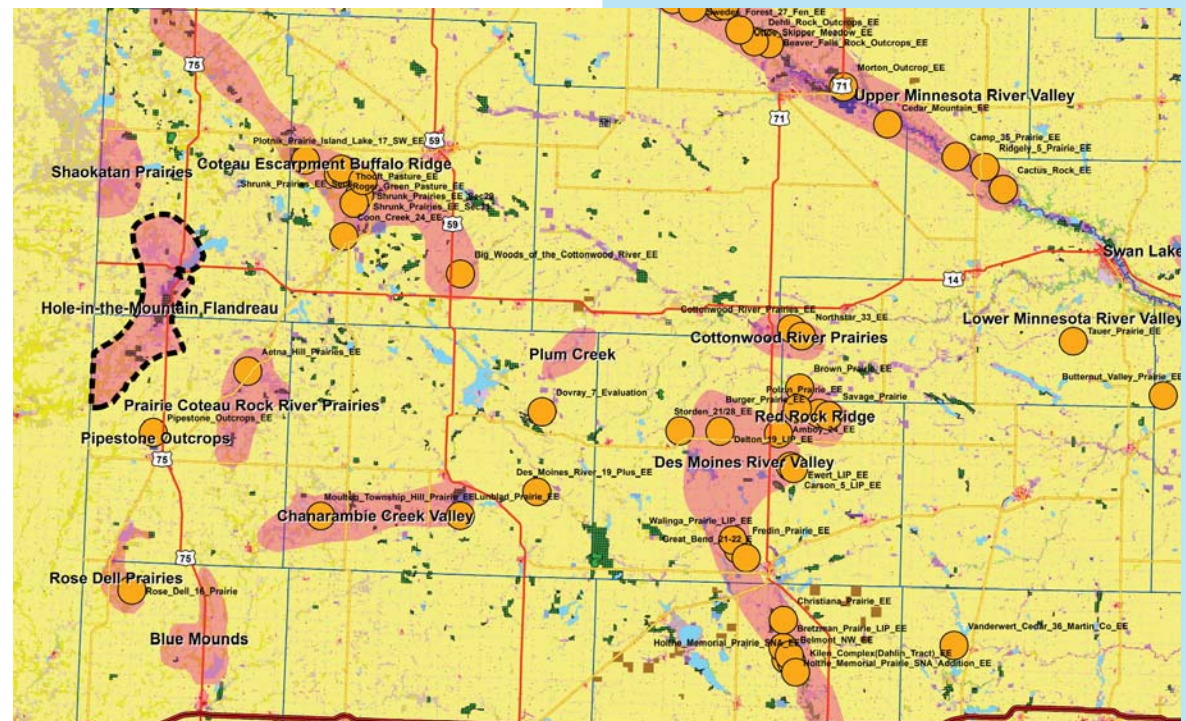
Ecological Evaluations:



Photo from Eric Runquist, Minnesota Zoo

Hole-in-the-Mountain/Flandreau

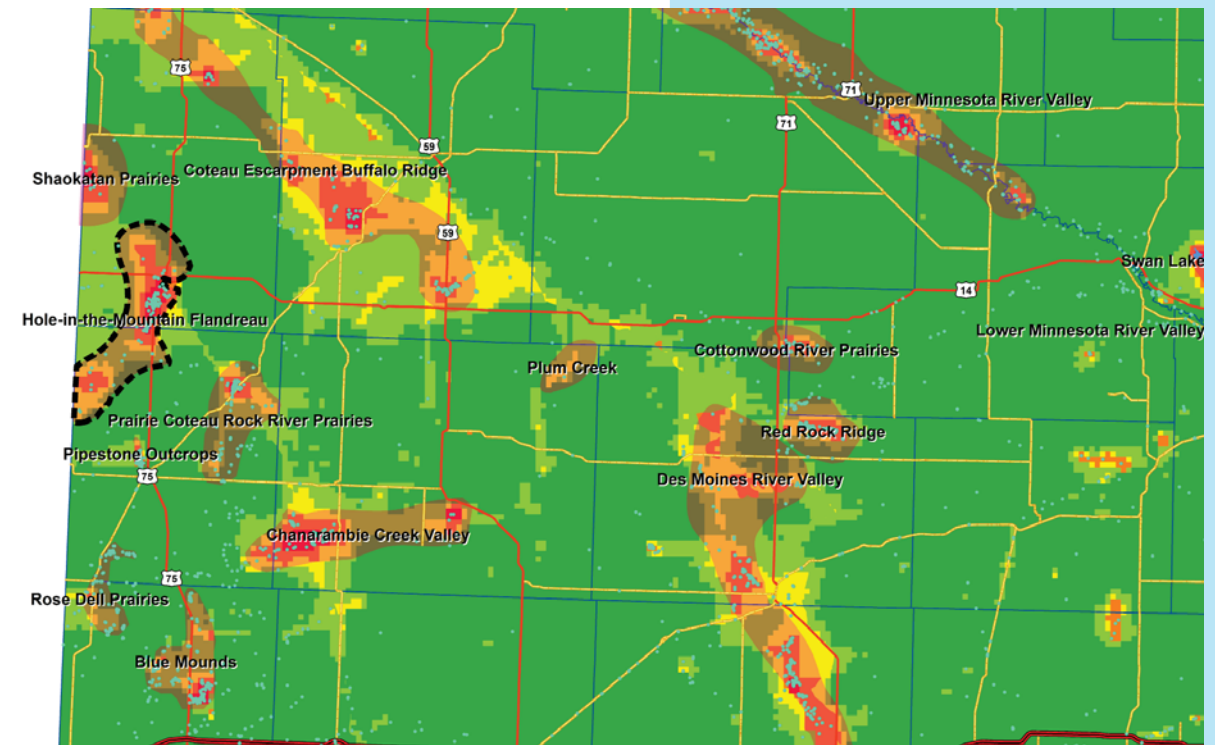
Ecological Evaluations, Land Cover, Public Ownership



Please see Legend at the front of the Opportunity Area Descriptions for a key to this map

Hole-in-the-Mountain/Flandreau

Marxan Prioritization, Element Occurrences



Legend

- Profiled COA
- Conservation Opportunity Area
- Rare Feature
- County Boundary
- Large Lake

Marxan Conservation Prioritization

- Lowest Priority
- Low Priority
- Medium Priority
- High Priority
- Highest Priority
- Interstate Highway
- U.S. Trunk Highway
- MN Trunk Highway