

Conservation Challenges:

- *Conversion to agricultural uses
- *Changes in agricultural practices
- *Deforestation/logging
- *Increased dewatering makes stream flow more flashy, reduces groundwater
- *Fluctuating/declining lake levels
- *Invasive spp.: Buckthorns, Eurasian honeysuckle, garlic mustard, leafy spurge, EAB
- *Habitat fragmentation
- *Urbanization/lakeshore development
- *Eutrophic lakes
- *Fire-dependent communities are likely to decline due to difficulty in restoring natural fire regimes

Conservation Opportunities:

Existing Conservation Network:

State Parks:

Wildlife Management Areas:

Geneva

State Forests:

Fisheries Management Areas:

SNAs:

Waterfowl Production Areas (USFWS):

Rare Species:

Bald Eagle
Blanding's Turtle
Colonial Waterbird Nesting Site
Walter's Barnyard Grass

Geneva Lake

Opportunity Area

Ecological Significance:

Geneva Lake is a large prairie lake located in extreme south-central Minnesota. It is known as a site of outstanding biodiversity significance. It is a lake that is more typically found within the prairie regions of the state, as it is shallow (maximum depth of 8 feet), with transitional emergent wetlands along the periphery, and tends to be eutrophic. Geneva Lake provides opportunities however as much of its shoreline is undeveloped wetland or woodland. Limited recreational use occurs as the lake has one county park, but no public boat ramps. Lake levels are maintained by an outlet control structure, but the lake has completely drawdown in the drought years of 1976 and 1977 (DNR, Lakefinder).



Counties:

Freeborn

Rare Native Plant Communities:

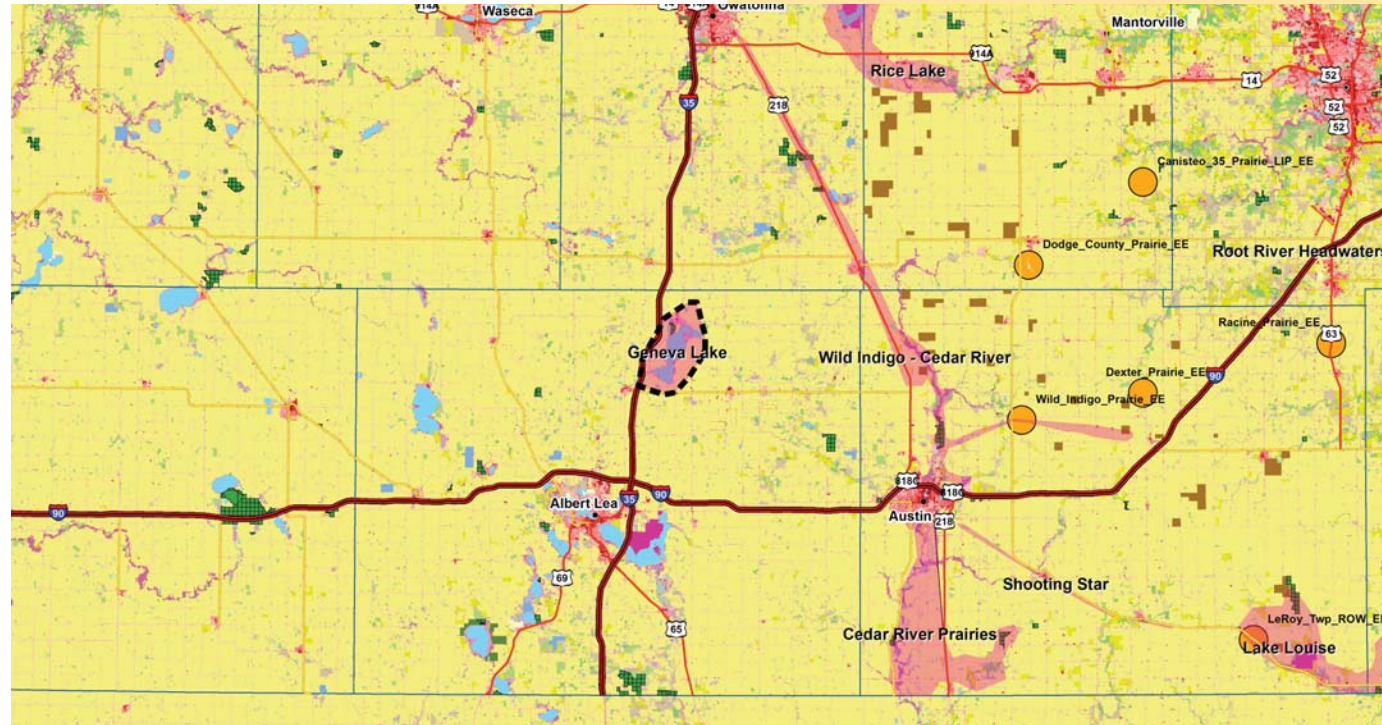
Ecological Evaluations:



Photo from Ducks Unlimited

Geneva Lake

Ecological Evaluations, Land Cover, Public Ownership



Please see Legend at the front of the Opportunity Area Descriptions for a key to this map

Geneva Lake

Marxan Prioritization, Element Occurrences

