

Felton Prairie

Conservation Challenges:

- *Conversion to agricultural uses
- *Changes in agricultural practices
- *Increased draitiling makes stream flow more flashy, reduces groundwater
- *Fluctuating/declining river levels
- *Invasive spp.: Buckthorns, Eurasian honeysuckle, garlic mustard, leafy spurge, EAB
- *Habitat fragmentation
- *Agricultural water pollutants/sedimentation
- *Fire-dependent communities are likely to decline due to difficulty in restoring natural fire regimes
- *Gravel mining

Conservation Opportunities:

- * Minnesota Prairie Plan
- * Adjacent WMAs, OAs

Existing Conservation Network:

State Parks:

State Forests:

SNAs: Felton Prairie

Wildlife Management Areas:

- Felton
- Flowing Prairie
- Ulen

Aquatic Management Areas:

Rare Features:

- | | |
|--|-------------------------------|
| Alkali Cord-grass | Northern Grasshopper Mouse |
| American Bittern | Nuttall's Ground-rose |
| Arogos Skipper | Oat-grass |
| Assiniboia Skipper | Pawnee Skipper |
| Baird's Sparrow | Plains Reedgrass |
| Blanket-flower | Powesheik Skipper |
| Blunt Sedge | Prairie Moonwort |
| Bunch Speargrass | Prairie Vole |
| Chestnut-collared Longspur | Red Three-awn |
| Clustered Broomrape | Red-Tailed Prairie Leafhopper |
| Creek Heelsplitter | Regal Fritillary |
| Dakota Skipper | Sandhill Crane |
| Dry Sedge | Small White Lady's slipper |
| Greater Prairie-chicken | Sprague's Pipit |
| Hair-like Beak-rush | Sterile Sedge |
| Hall's Sedge | Uhler's Arctic |
| Henslow's Sparrow | Upland Sandpiper |
| Lake and Wetland Deposition (Quaternary) | Whorled Nut-rush |
| Least Moonwort | Yellow Rail |
| Loggerhead Shrike | |
| Louisiana Broomrape | |
| Marbled Godwit | |
| Marsh Arrow-grass | |
| Nelson's Sparrow | |



Felton Prairie

Opportunity Area

Ecological Significance:

Felton Prairie OA is similar to Bluestem Prairie in that it straddles the Red River Valley, and its beach ridges, however, it has varied terrain that creates a variety of microclimates and soils that foster a mix of prairie and wetland types: dry, mesic, wet, and wet saline; and seepage fens, calcareous fens, and deciduous forest. In fact, the mosaic of so many different communities so closely juxtaposed makes Felton Prairie uniquely valuable with its unique combination of species and communities. This mosaic greatly contributes to the biodiversity of the area. (Felton Prairie Stewardship Plan). The Opportunity Area is a key link in the Red River Valley corridor and incorporates several WMAs. The OA has a notable number of Element Occurrences, and also includes examples of the Agassiz Interbeach Prairie Complex



Counties:

Clay

Rare Native Plant Communities:

- Calcareous Fen (Northwestern)
- Dry Hill Prairie (Northern)
- Dry Sand - Gravel Prairie (Northern)
- Mesic Prairie (Northern)
- Prairie Mixed Cattail Marsh
- Seepage Meadow/Carr
- Wet Brush-Prairie (Northern)
- Wet Prairie (Northern)
- Wet Saline Prairie (Northern)
- Wet Seepage Prairie (Northern)
- Willow - Dogwood Shrub Swamp

Ecological Evaluations:

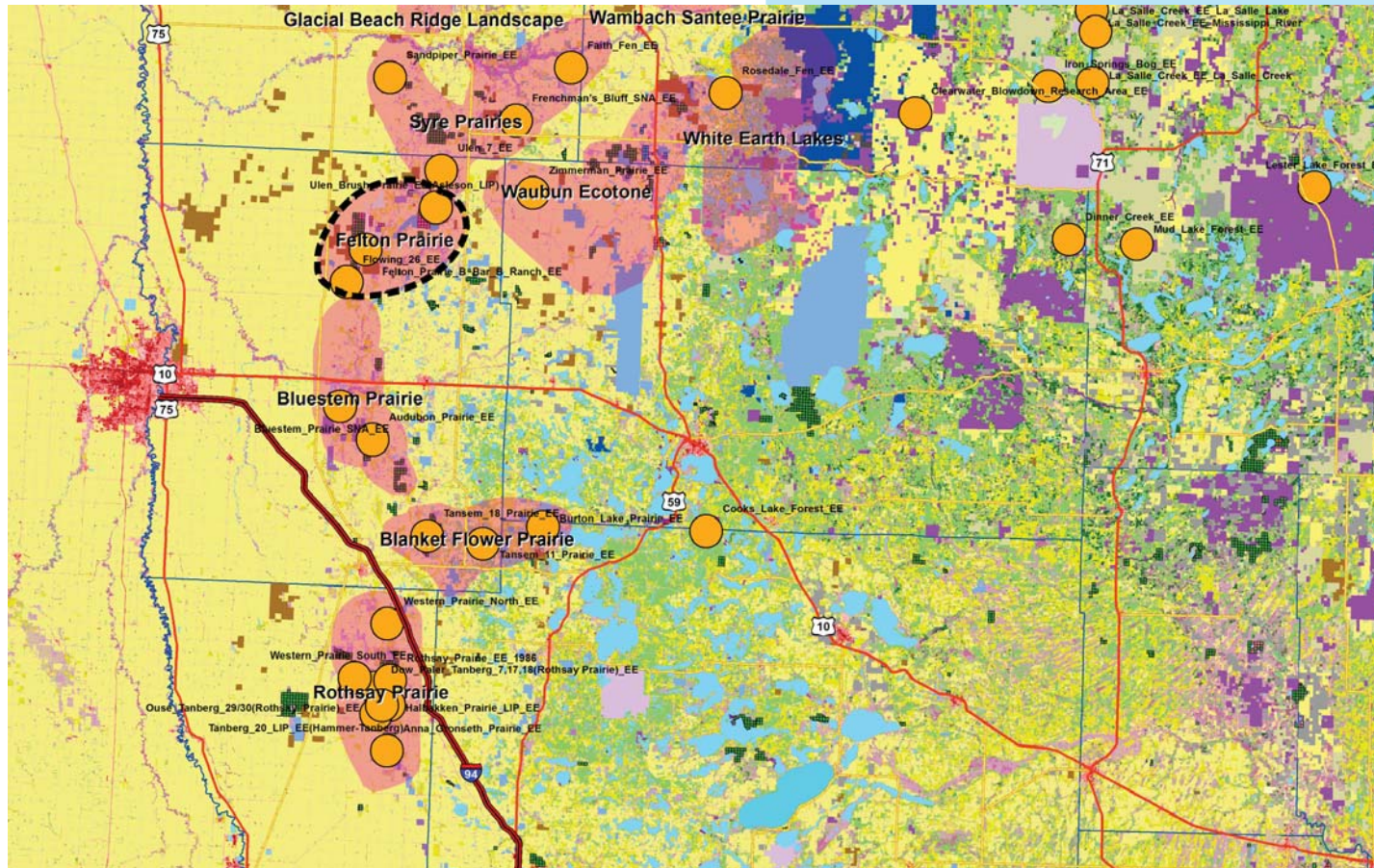
Flowing 26
Ulen Brush Prairie
(Asleson LIP)



Photo courtesy of minnesotaseasons.com

Felton Prairie

Ecological Evaluations, Land Cover, Public Ownership



Please see Legend at the front of the Opportunity Area Descriptions for a key to this map

Felton Prairie

Marxan Prioritization, Element Occurrences

