

Dragon Lake

Conservation Challenges:

- * Conversion to timber and mining uses
- * Changes in timber practices
- * Fluctuating/declining groundwater levels
- * Invasive spp.: Buckthorns, Eurasian honeysuckle, garlic mustard, leafy spurge, EAB
- * Habitat fragmentation
- * Agricultural water pollutants/sedimentation

Conservation Opportunities:

- * Watershed is engaged in natural resource management planning
- * County Tax Forfeit Land

Existing Conservation Network:

National Forests: Superior

State Forests:

SNAs:

Aquatic Management Areas:

Fisheries Management Areas:

Rare Species:

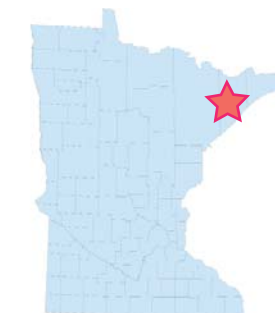
Alpine Milk-vetch
American Shore-plantain
Bald Eagle
Black-throated Blue Warbler
Clustered Bur-reed
Creek Heelsplitter
Ice Deposition (Quaternary)
Katahdin Sedge
Montane Yellow-eyed Grass
Northern Comandra
Northern Goshawk
One Flowered Muhly
Pale Manna Grass
Small White Water-lily
Sooty-colored Beak-rush
Woolgrass
Yellow Sedge



Dragon Lake Opportunity Area

Ecological Significance:

Dragon Lake Opportunity Area is an important area of outstanding biodiversity significance. In addition, experts familiar with the area determined that it merited designation as an Opportunity Area even though the data for rare features and native plant communities were preliminary. The area is close to the headwaters of the St. Louis River, providing additional importance.



Counties:

Lake

Rare Native Plant Communities:

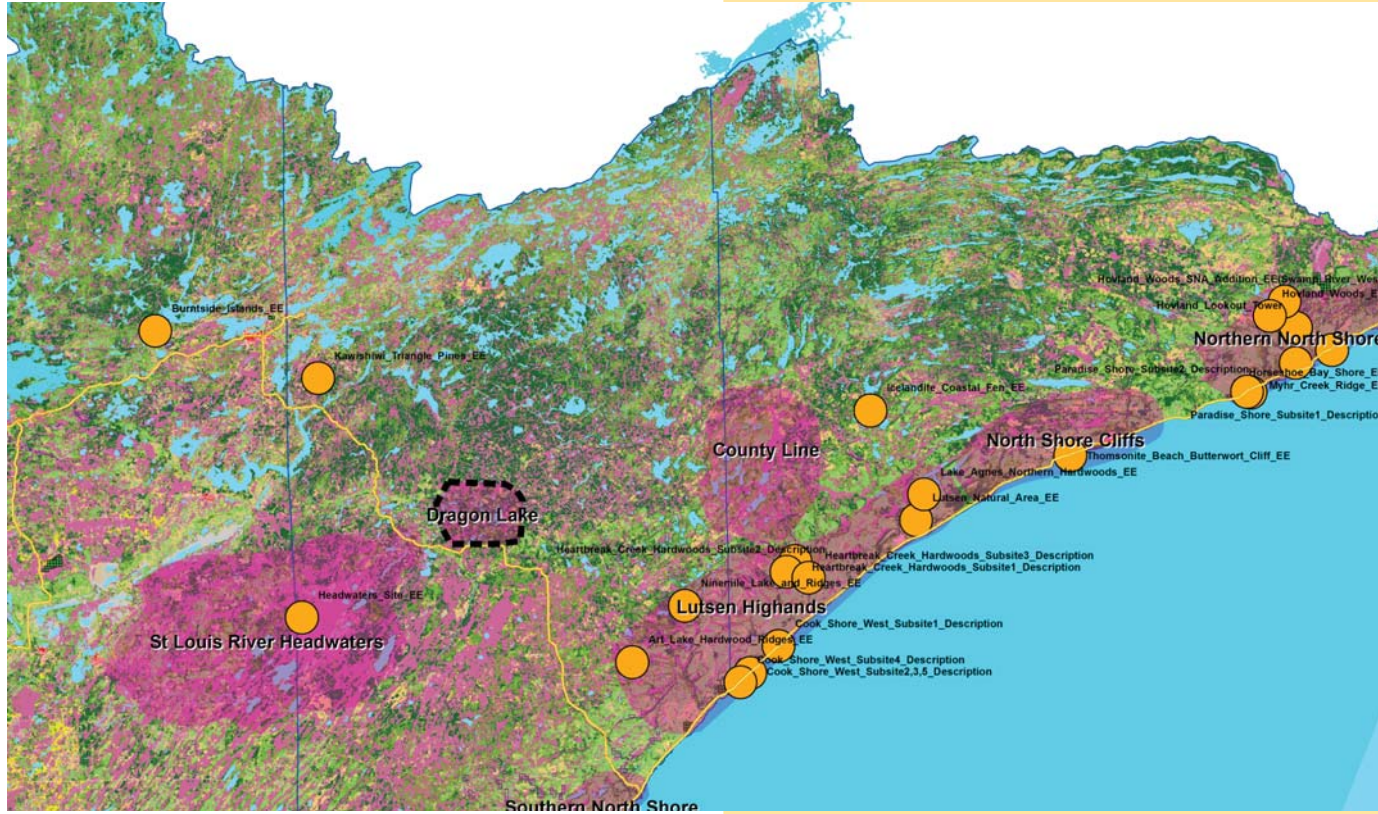
No rare plant communities were identified in the Rare Features database. Native Plant Communities had not been mapped for this OA yet.

Ecological Evaluations:



Dragon Lake

Ecological Evaluations, Land Cover, Public Ownership



Please see Legend at the front of the Opportunity Area Descriptions for a key to this map

Dragon Lake

Marxan Prioritization, Element Occurrences

