

# Crow River Big Woods

## Conservation Challenges:

- \*Urbanization
- \*Conversion to agricultural uses
- \*Changes in agricultural practices
- \*Increased draitiling makes stream flow more flashy,\*reduces groundwater
- \*Fluctuating/declining groundwater levels
- \*Invasive spp.: Buckthorns, Eurasian honeysuckle, garlic . mustard, leafy spurge, EAB
- \*Habitat fragmentation
- \*Agricultural water pollutants/sedimentation
- \*Fire-dependent communities are likely to decline due to difficulty in restoring natural fire regimes

## Conservation Opportunities:

- \* Watershed is engaged in natural resource management planning

## Existing Conservation Network:

State Parks: Lake Maria

State Forests:

SNAs:

Wildlife Management Areas: Hoglund  
Succonnix

County Parks: Harry M. Larson  
Stanley-Eddy

## Rare Features:

- Acadian Flycatcher
- American Ginseng
- Bald Eagle
- Black Sandshell
- Blanding's Turtle
- Cerulean Warbler
- Colonial Waterbird Nesting Site
- Common Tern
- Creek Heelsplitter
- Forster's Tern
- Least Darter
- Pugnose Shiner
- Red-shouldered Hawk
- Sandhill Crane
- Thread-like Naiad
- Trumpeter Swan
- Widgeon-grass



# Crow River Big Woods Opportunity Area

## Ecological Significance:

The Big Woods of east-central Minnesota have rich forests that have climax species of sugar maple, red oak, basswood, and, previously, American elm. Rich wildflower assemblages occur from the fertile soils and ongoing recycling of calcium and magnesium through the leaf litter. These woods have been largely logged and transformed into agricultural fields and urban development. In addition, these biomes are susceptible to the multi-pronged assault from invasion by common buckthorn and garlic mustard, overbrowsing by deer, and loss of seed germination medium due to exotic earthworms. Therefore the small percentage of Big Woods that remains is very susceptible to a number of threats. This is why it is important to preserve the few intact examples of Big Woods that remain.



## Counties:

- Meeker
- Stearns
- Wright

## Rare Native Plant Communities:

- Alder - (Maple - Loosestrife) Swamp
- Basswood - Bur Oak - (Green Ash) Forest
- Black Ash - (Red Maple) Seepage Swamp
- Dry Sand - Gravel Oak Savanna (Southern)
- Graminoid Poor Fen
- Northern Poor Fen
- Prairie Rich Fen
- Sedge Meadow
- Silver Maple - (Virginia Creeper) Floodplain Forest
- Tamarack Swamp (Southern)
- Willow - Dogwood Shrub Swamp

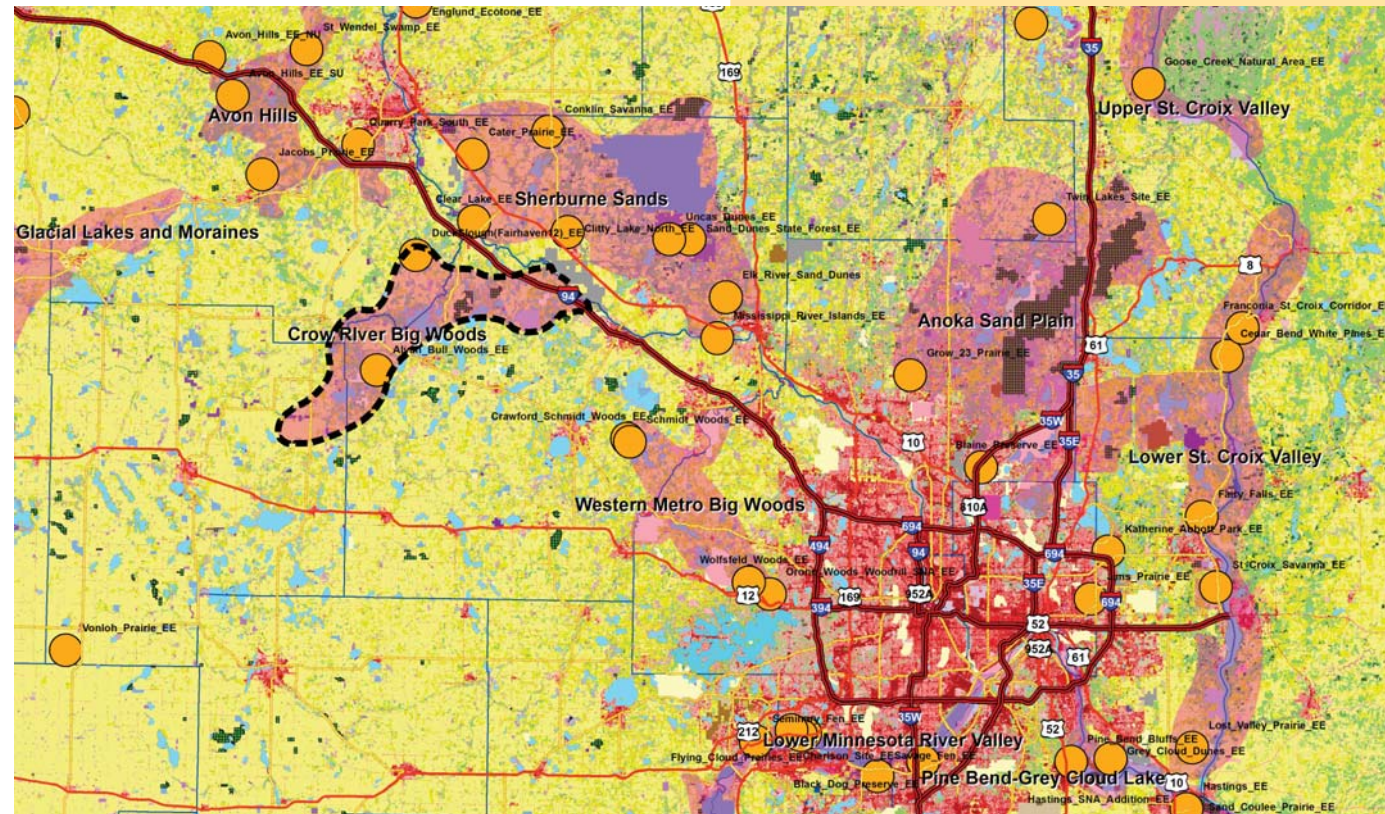
## Ecological Evaluations:

- Alvah Bull Woods
- Duck Slough/Fairhaven 12



# Crow River Big Woods

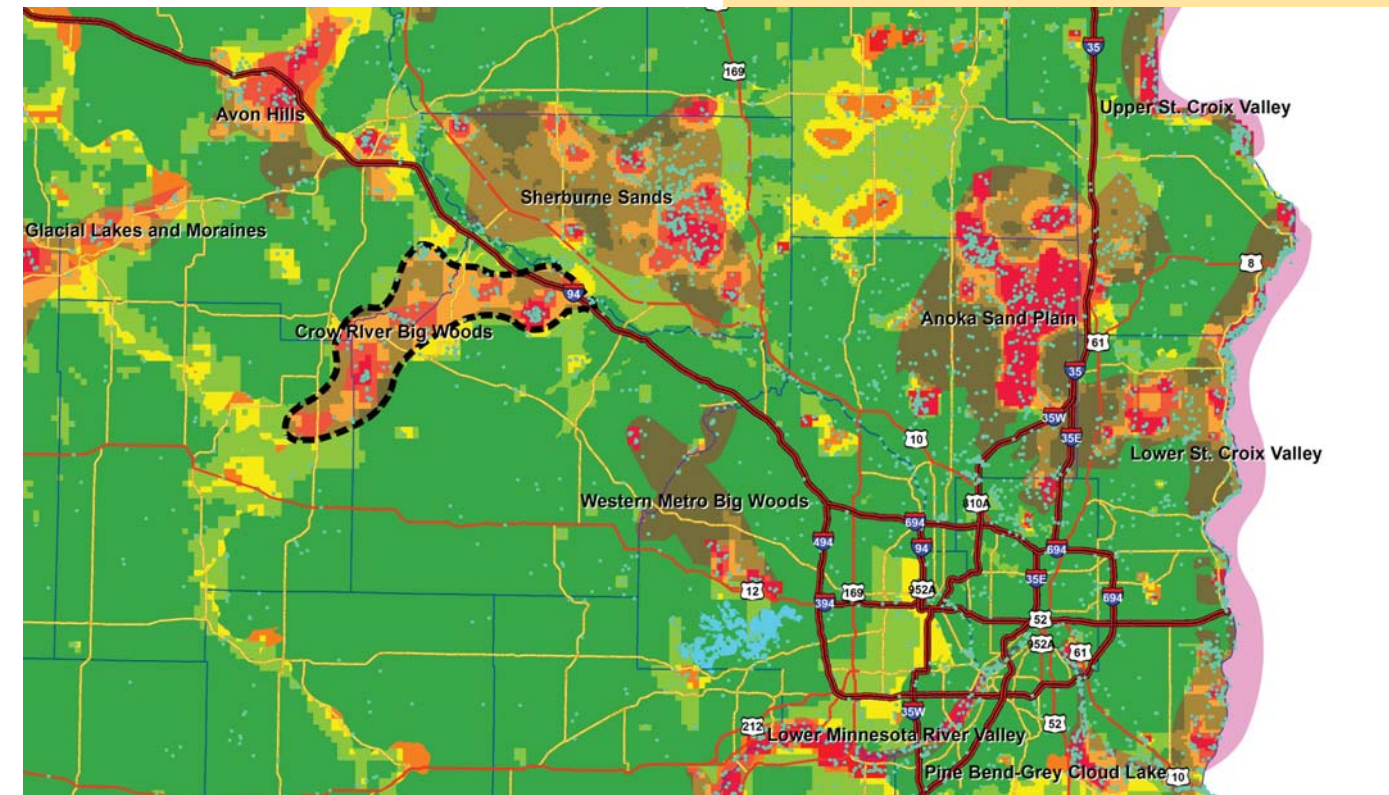
Ecological Evaluations, Land Cover, Public Ownership



Please see Legend at the front of the Opportunity Area Descriptions for a key to this map

# Crow River Big Woods

Marxan Prioritization, Element Occurrences



## Legend

- Profiled COA
  - Conservation Opportunity Area
  - Rare Feature
  - County Boundary
  - Large Lake
- Marxan Conservation Prioritization**
- Lowest Priority
  - Low Priority
  - Medium Priority
  - High Priority
  - Highest Priority
  - Interstate Highway
  - U.S. Trunk Highway
  - MN Trunk Highway