

Conservation Challenges:

- *Conversion to timber, mining and agricultural uses
- *Changes in agricultural practices
- *Increased dewatering makes stream flow more flashy, reduces groundwater
- *Fluctuating/declining groundwater levels
- *Invasive spp.: Buckthorns, Eurasian honeysuckle, garlic mustard, leafy spurge, EAB
- *Habitat fragmentation
- *Agricultural water pollutants/sedimentation

Conservation Opportunities:

- * Watershed is engaged in natural resource management planning
- * Large amount of public lands

Existing Conservation Network:

State Parks:

State Forests: Cloquet Valley

SNAs:

Aquatic Management Areas:

Sucker River
Knife River, W. Branch

Rare Features:

- | | |
|---------------------------------|---------------------------|
| A Caddisfly (two species) | Montane Yellow-eyed Grass |
| Bald Eagle | Nabokov's Blue |
| Barren Strawberry | Pale Manna Grass |
| Black Sandshell | Red-shouldered Hawk |
| Bur-marigold | Sandhill Crane |
| Carolina Spring-beauty | Satiny Willow |
| Club-spur Orchid | Sooty-colored Beak-rush |
| Colonial Waterbird Nesting Site | Taiga Alpine |
| Creek Heelsplitter | Three Stamened Waterwort |
| Dragon's-mouth | Torrey's Manna-grass |
| Goblin Fern | Trumpeter Swan |
| Humped Bladderwort | Vasey's Pondweed |
| Leafless Water Milfoil | Wood Turtle |
| Least Moonwort | Woolgrass |
| Matricary Grape fern | Yellow Sedge |

Cloquet Headwaters Opportunity Area

Ecological Significance:

The headwaters of both the Cloquet and St. Louis Rivers have been delineated as Opportunity Areas due to their largely undeveloped upper watersheds, and critical roles as providing undisturbed headwater habitats for these rivers of significance in northeastern Minnesota. Conservation of intact habitats within the headwaters of large stream systems is key strategy to promoting healthy watersheds in general. By maintaining healthy Native Plant Communities, there is a reduced likelihood of erosion and invasive species from occurring and flowing downstream to affect the rest of the watershed.



Counties:

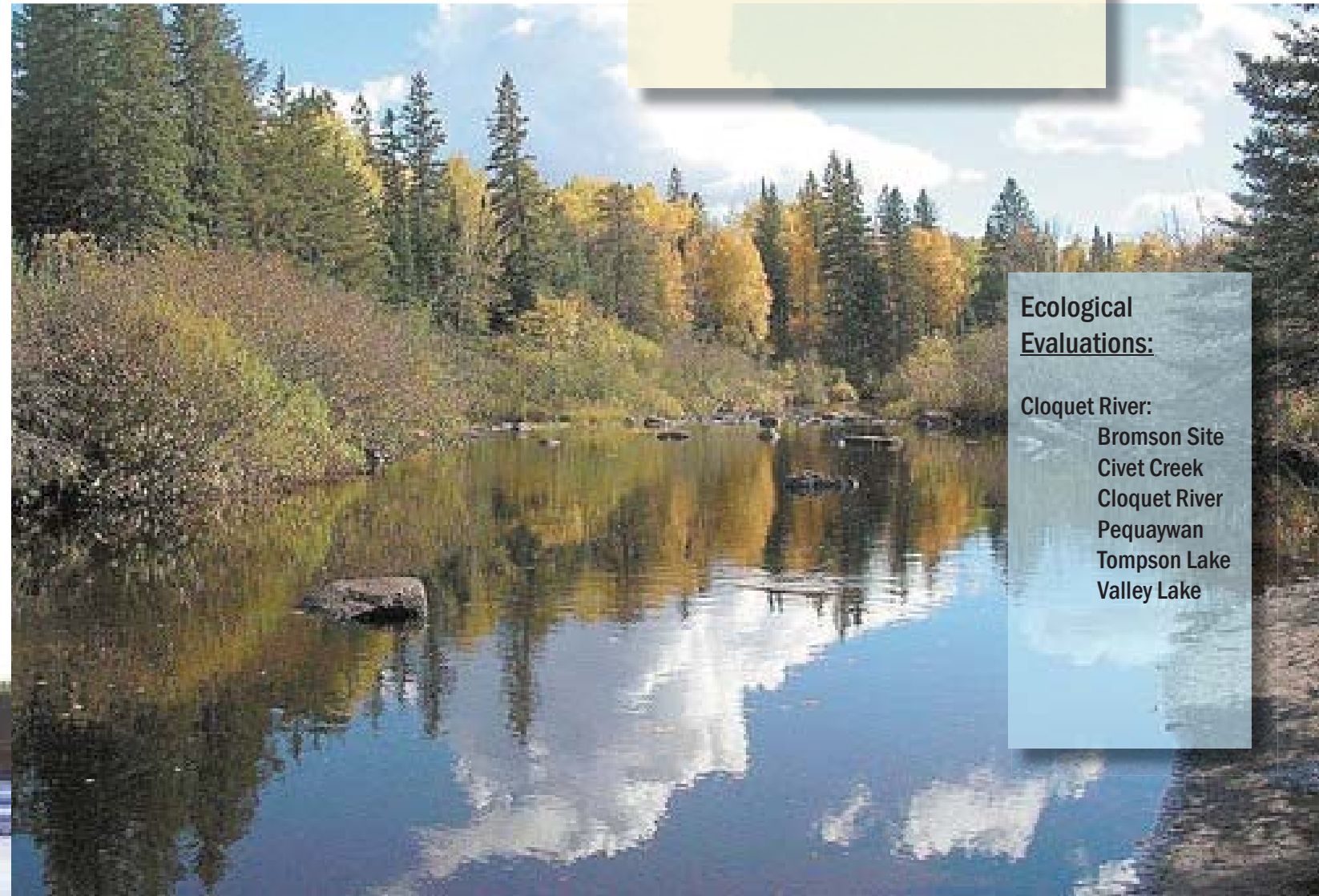
St. Louis

Rare Native Plant Communities:

Ecological Evaluations:

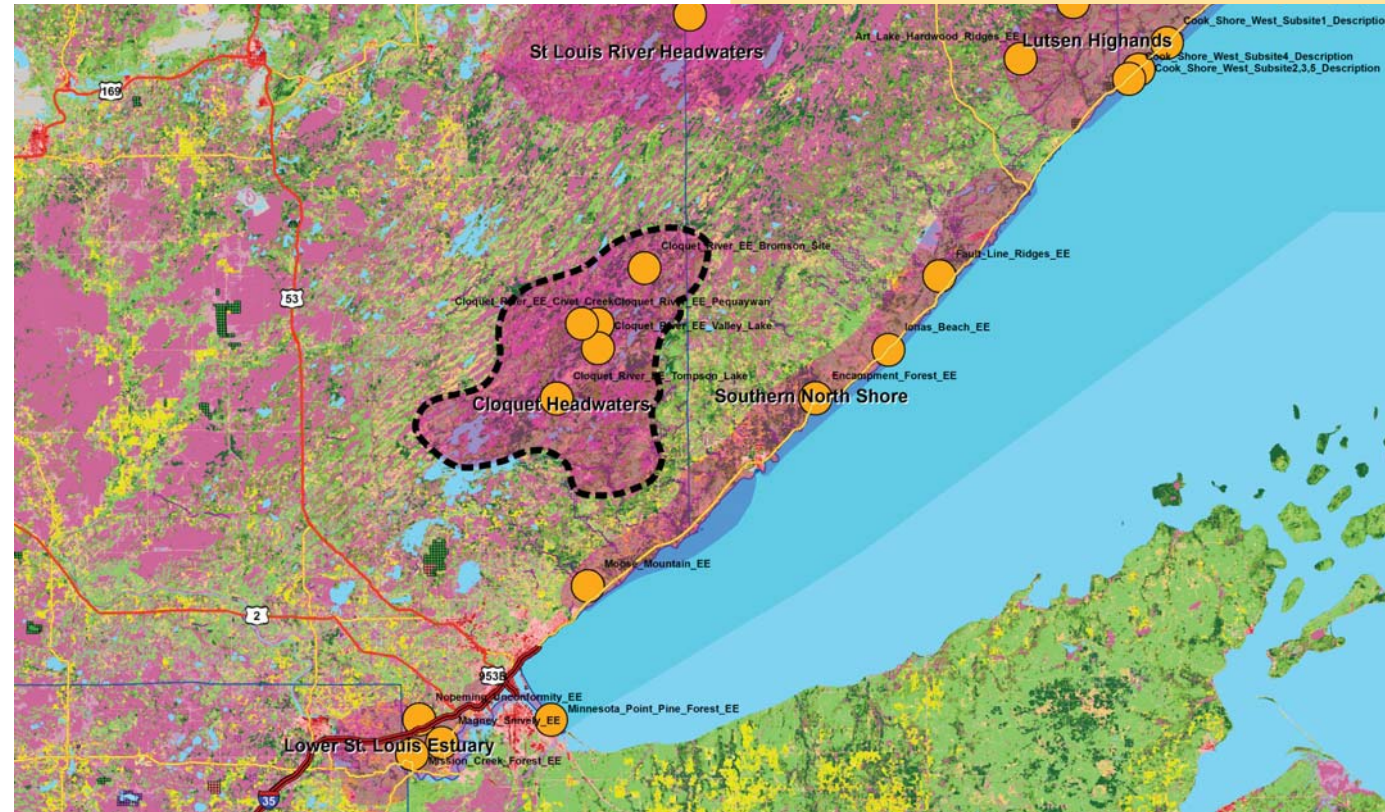
Cloquet River:

- Bromson Site
- Civet Creek
- Cloquet River
- Pequaywan
- Tompson Lake
- Valley Lake



Cloquet Headwaters

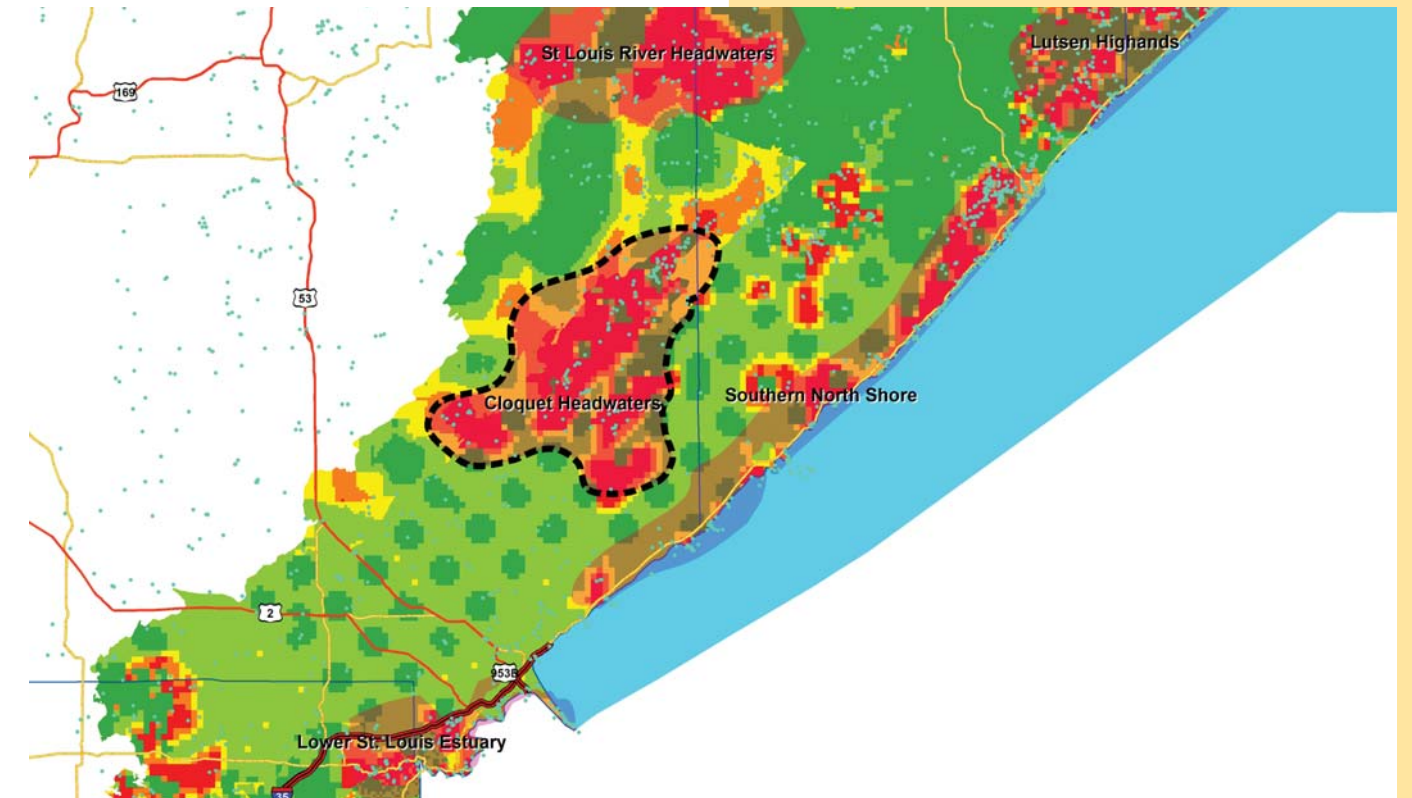
Ecological Evaluations, Land Cover, Public Ownership





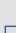

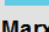
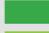




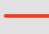


Please see Legend at the front of the Opportunity Area Descriptions for a key to this map

Cloquet Headwaters

Marxan Prioritization, Element Occurrences



Legend

-  Profiled COA
 -  Conservation Opportunity Area
 -  Rare Feature
 -  County Boundary
 -  Large Lake
- Marxan Conservation Prioritization**
-  Lowest Priority
 -  Low Priority
 -  Medium Priority
 -  High Priority
 -  Highest Priority
 -  Interstate Highway
 -  U.S. Trunk Highway
 -  MN Trunk Highway