

Conservation Challenges:

- * Conversion to agricultural uses
- * Changes in agricultural practices
- * Increased draitiling makes stream flow more flashy, reduces groundwater
- * Fluctuating/declining river evels
- * Invasive spp.: leafy spurge,
- * Habitat fragmentation
- * Wind farms
- * Overgrazing
- * Fire-dependent communities are likely to decline due to difficulty in restoring natural fire regimes

Conservation Opportunities:

- * Minnesota Prairie Conservation Plan

Existing Conservation Network:

State Parks:
State Forests:

SNAs:

Wildlife Management Areas:

- Chandler
- Dierenfield
- H.C. Southwick
- Henry Vos
- Humphrey
- Salt & Pepper
- Tennessee

Aquatic Management Areas:

Rare Species:

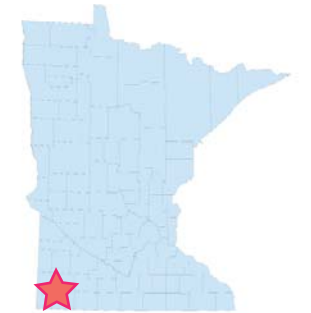
- | | |
|-------------------------------|----------------------------|
| A Jumping Spider | Sandhill Crane |
| Blanding's Turtle | Small White Lady's-slipper |
| Dakota Skipper | Sullivant's Milkweed |
| Few-flowered Spike-rush | Topeka Shiner |
| Hair-like Beak-rush | Trumpeter Swan |
| Hall's Sedge | Upland Sandpiper |
| Iowa Skipper | Western Harvest Mouse |
| Least Weasel | |
| Loggerhead Shrike | |
| Low Milk-vetch | |
| Marsh Arrow-grass | |
| Pawnee Skipper | |
| Phlox Moth | |
| Powesheik Skipper | |
| Prairie Moonwort | |
| Red Three-awn | |
| Red-Tailed Prairie Leafhopper | |
| Regal Fritillary | |

Chanarmbie Creek Valley

Opportunity Area

Ecological Significance:

The Chanarmbie Creek Valley is a headwater of the Rock River system. River systems such as the Rock and the Big Sioux have incised into the terrain to create deep valleys not typically seen outside of southeastern Minnesota. The drier climate, lack of forest, and well-drained soils create suitable habitat for drier native plant communities of short and mixed grasses such as dry hill prairies. Much of the sloped portion of the landscape has remained uncultivated and therefore has the potential to harbor areas of native prairie. This OA has importance due to its rare plant communities, rare species, and unusual landforms. This Opportunity Area has one of the largest concentrations of native prairies in southwestern Minnesota, and provides significant habitat for the soon-to-be-federally-listed Dakota Skipper.



Counties:

Murray
Pipestone

Rare Native Plant Communities:

- Calcareous Fen (Southwestern)
- Dry Hill Prairie (Southern)
- Mesic Prairie (Southern)
- Wet Prairie (Southern)

Ecological Evaluations:

Lundblad Prairie
Mouton Township Hill Prairie

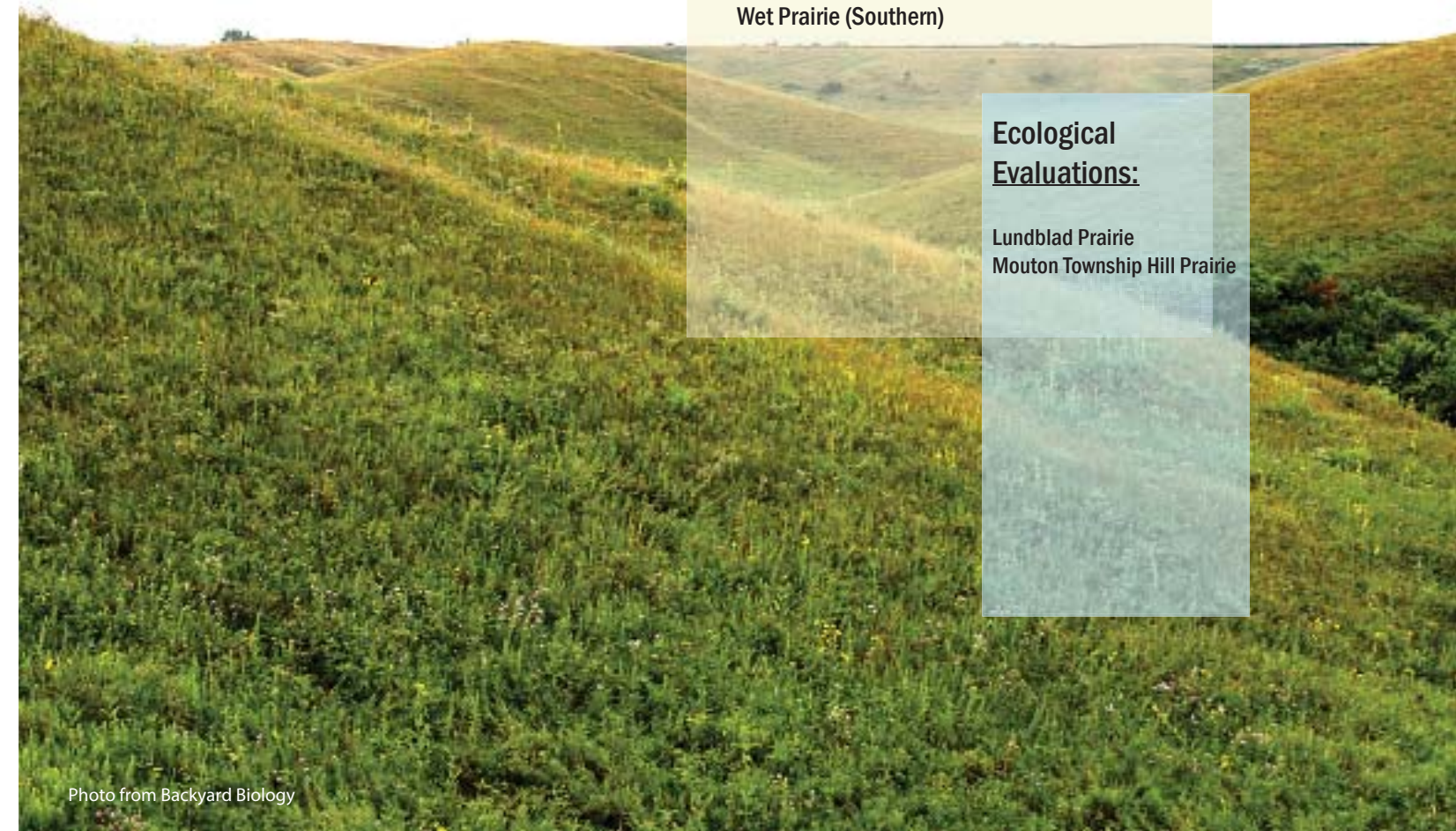
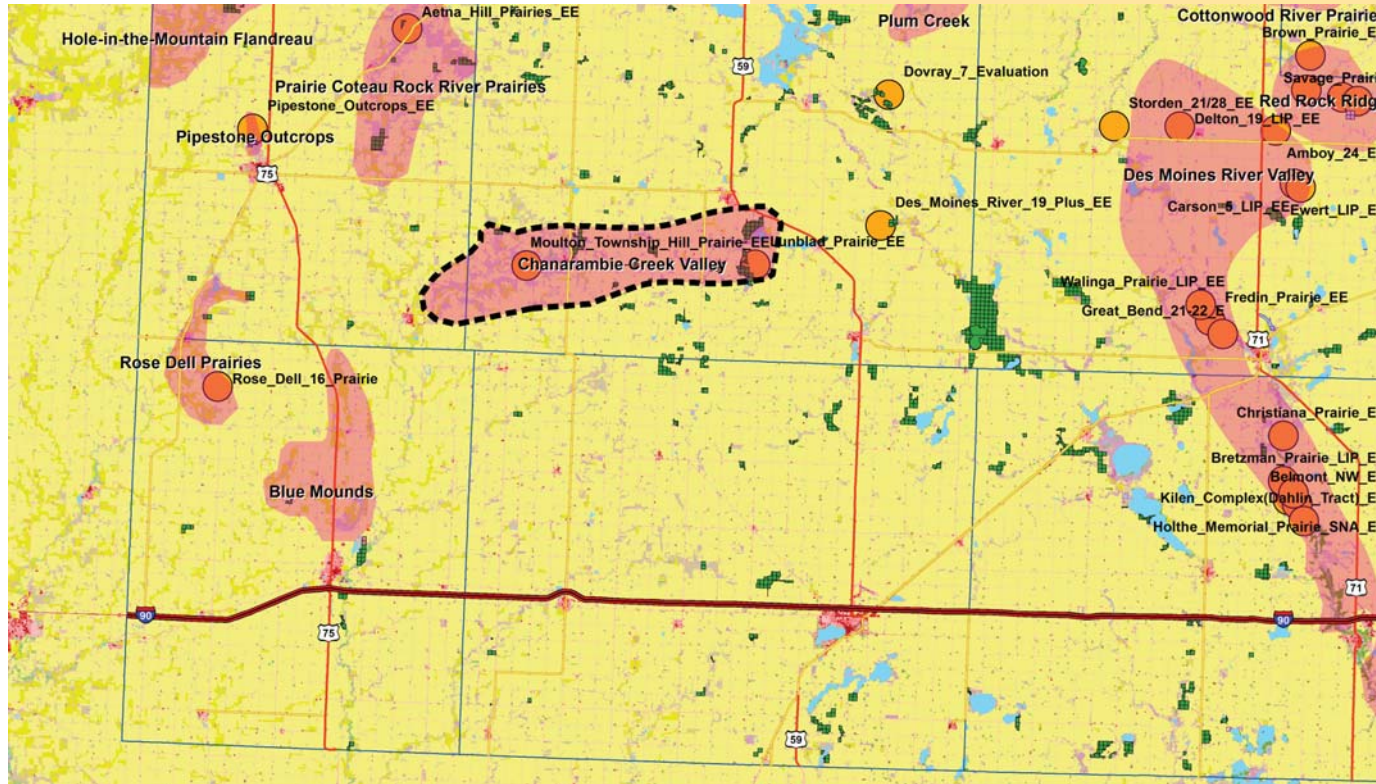


Photo from Backyard Biology

Chanarambie Creek Valley

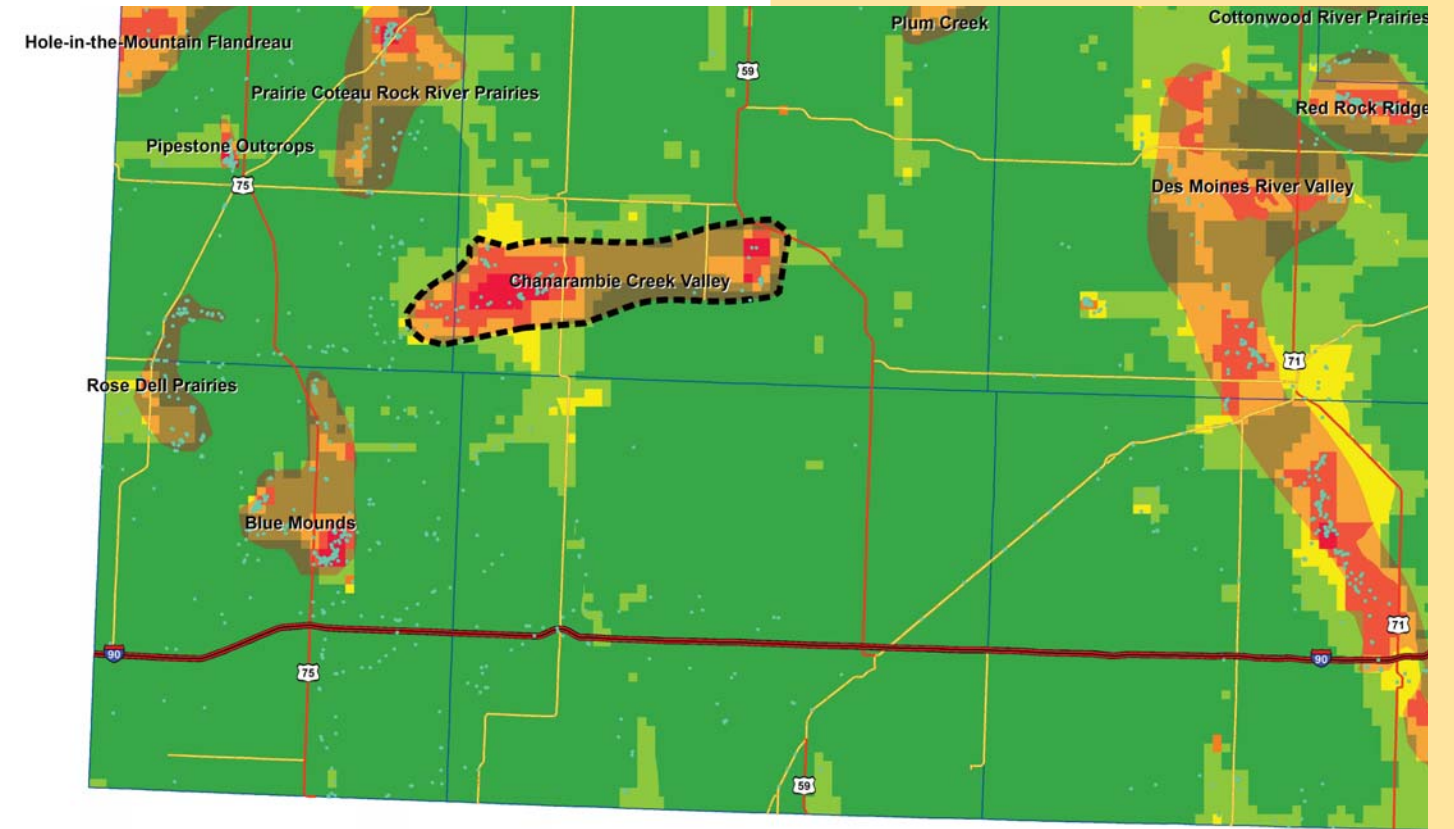
Ecological Evaluations, Land Cover, Public Ownership



Please see Legend at the front of the Opportunity Area Descriptions for a key to this map

Chanarambie Creek Valley

Marxan Prioritization, Element Occurrences



Legend

- Profiled COA
- Conservation Opportunity Area
- Rare Feature
- County Boundary
- Large Lake

Marxan Conservation Prioritization

- Lowest Priority
- Low Priority
- Medium Priority
- High Priority
- Highest Priority
- Interstate Highway
- U.S. Trunk Highway
- MN Trunk Highway