

# Bluestem Prairie

## Conservation Challenges:

- \* Conversion to agricultural uses
- \* Changes in agricultural practices
- \* Increased dewatering makes stream flow more flashy, reduces groundwater
- \* Fluctuating/declining river levels
- \* Invasive spp.: Buckthorns, Eurasian honeysuckle, garlic mustard, leafy spurge, EAB
- \* Habitat fragmentation
- \* Agricultural water pollutants/sedimentation
- \* Fire-dependent communities are likely to decline due to difficulty in restoring natural fire regimes

## Conservation Opportunities:

- \* Buffalo River State Park and naturalist program
- \* Minnesota Prairie Plan

## Existing Conservation Network:

State Parks: Buffalo River

State Forests:

SNAs: Bluestem Prairie

Wildlife Management Areas:  
Bjornson  
Magnusson

Aquatic Management Areas:

## Rare Features:

- |                              |                                |
|------------------------------|--------------------------------|
| Alkali Cord-grass            | Oat-grass                      |
| Assiniboia Skipper           | Plains Pocket Mouse            |
| Black Grass                  | Plains Reedgrass               |
| Black Sandshell              | Poweshiek Skipper              |
| Blanket-flower               | Prairie Vole                   |
| Bunch Spargrass              | Regal Fritillary               |
| Carolina Foxtail             | Sandhill Crane                 |
| Clustered Broomrape          | Small White Lady's Slipper     |
| Dakota Skipper               | Sterile Sedge                  |
| Drummond's Campion           | Uhler's Arctic                 |
| Felwort                      | Upland Sandpiper               |
| Greater Prairie-chicken      | Western Prairie Fringed Orchid |
| Hall's Sedge                 | Wilson's Phalarope             |
| Henslow's Sparrow            |                                |
| Lake Erosion (Quaternary)    |                                |
| Loggerhead Shrike            |                                |
| Louisiana Broomrape          |                                |
| Low Milk-vetch               |                                |
| Macoun's Gentian             |                                |
| Marbled Godwit               |                                |
| Marsh Arrow-grass            |                                |
| Nelson's Sparrow             |                                |
| Northern Gentian             |                                |
| Northern Grasshopper         |                                |
| Mouse                        |                                |
| Northern Single-spiked Sedge |                                |
| Nuttall's Sunflower          |                                |

# Bluestem Prairie Opportunity Area

## Ecological Significance:

The Bluestem Prairie is similar to Blanket Flower Prairie in that it straddles the Red River Valley, and beach ridges, but it doesn't extend as far to the east to the extent that the Blanket Flower Prairie Opportunity Areas does. The Area does have a mix of prairie types: dry, mesic, wet, saline; and seepage fens, deciduous forest and the significant Agassiz Beach Ridge Complex native plant community. The beach ridges also provide vista locations for seeing across the valley. The Opportunity Area is a key link in the Red River Valley corridor, and is also located just outside the Fargo-Moorhead metropolitan area.



## Counties:

Clay

## Rare Native Plant Communities:

- Aspen - (Cordgrass) Woodland
- Dry Hill Prairie (Northern)
- Dry Sand - Gravel Prairie (Northern)
- Green Ash - Bur Oak - Elm Forest
- Mesic Prairie (Northern)
- Seepage Meadow/Carr
- Seepage Meadow/Carr, Aquatic Sedge Subtype
- Wet Brush-Prairie (Northern)
- Wet Prairie (Northern)
- Wet Saline Prairie (Northern)
- Wet Seepage Prairie (Northern)
- Willow - Dogwood Shrub Swamp

## Ecological Evaluations:

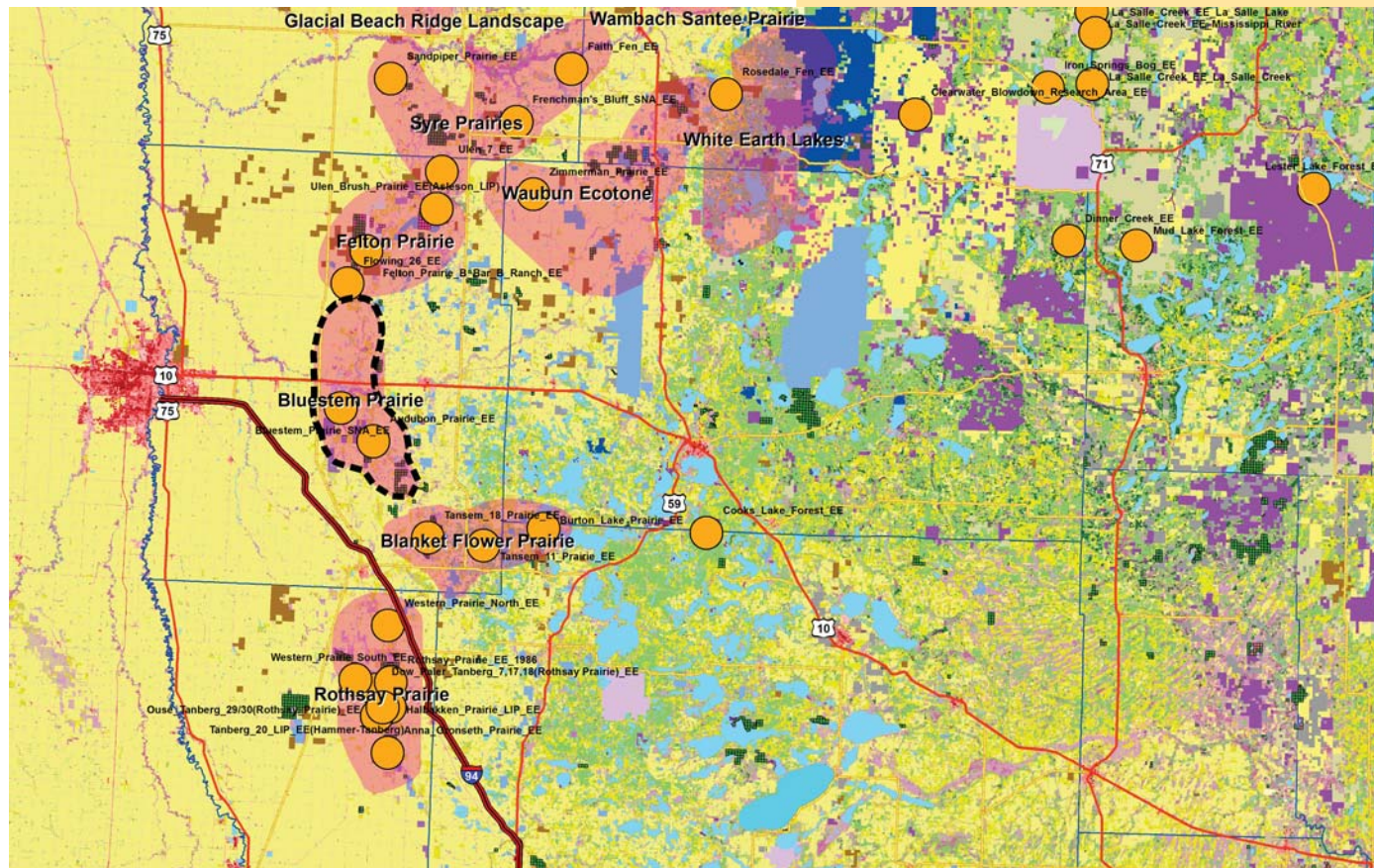
Audobon Prairie  
Bluestem Prairie



Photo courtesy of minnesotaseasons.com

# Bluestem Prairie

Ecological Evaluations, Land Cover, Public Ownership



Please see Legend at the front of the Opportunity Area Descriptions for a key to this map

# Bluestem Prairie

Marxan Prioritization, Element Occurrences

