

Blue Mounds

Conservation Challenges:

- *Conversion to agricultural uses
- *Changes in agricultural practices
- *Increased drantiling makes stream flow more flashy, reduces groundwater
- *Invasive spp.: Buckthorns, leafy spurge, EAB
- *Habitat fragmentation
- *Bedrock mining
- *Fire-dependent communities are likely to decline due to difficulty in restoring natural fire regimes

Conservation Opportunities:

- * Sites are in close juxtaposition
- *

Existing Conservation Network:

State Parks: Blue Mounds

State Forests:

SNAs:

Wildlife Management Areas: Rock River
Little Beaver Creek

Aquatic Management Areas:

Waterfowl Production Areas (USFWS):

Reinvest in Minnesota:

Rare Species:

- | | |
|----------------------------|--------------------------------|
| A Species of Lichen | Powesheik Skipper |
| Blackfoot Quillwort | Prairie Bush Clover |
| Blanchard's Cricket Frog | Prairie Vole |
| Buffalo Grass | Regal Fritillary |
| Burrowing Owl | Short-pointed Umbrella-sedge |
| Carolina Foxtail | Slender Plantain |
| Forget-me-not | Small White Lady's-slipper |
| Hairy Water Clover | Three Stamened Waterwort |
| Henslow's Sparrow | Topeka Shiner |
| Larger Water-starwort | Tumblegrass |
| Lined Snake | Uhler's Arctic |
| Little Barley | Upland Sandpiper |
| Meadow Popcorn-flower | Water-hyssop |
| Mousetail | Western Fox snake |
| Mud Plantain | Western Harvest Mouse |
| Mudwort | Western Prairie Fringed Orchid |
| Narrow-leaved Vervain | Wolf's Spike-rush |
| Northern Grasshopper Mouse | |
| Pigmyweed | |
| Plains Prickly Pear | |
| Plains Topminnow | |
| Slender Plantain | |

Blue Mounds Opportunity Area

Ecological Significance:

Blue Mounds create perhaps the most iconic landscape in southwestern Minnesota. This opportunity area has historic, geological, and biological significance. While Blue Mounds are relatively isolated, it is part of a greater Sioux Quartzite formation that extends northward to Pipestone and westward into South Dakota. A number of rare prairie and rock outcrop species occur within this OA, which make it a unique resource of statewide significance. This OA contains two of the three most significant outcrop sites in Minnesota (Touch the Sky National Wildlife Refuge and Blue Mounds State Park). These outcrops harbor the state's largest populations of several very rare plant species that occupy rock outcrops (the third site is Pipestone Outcrops).



Counties:

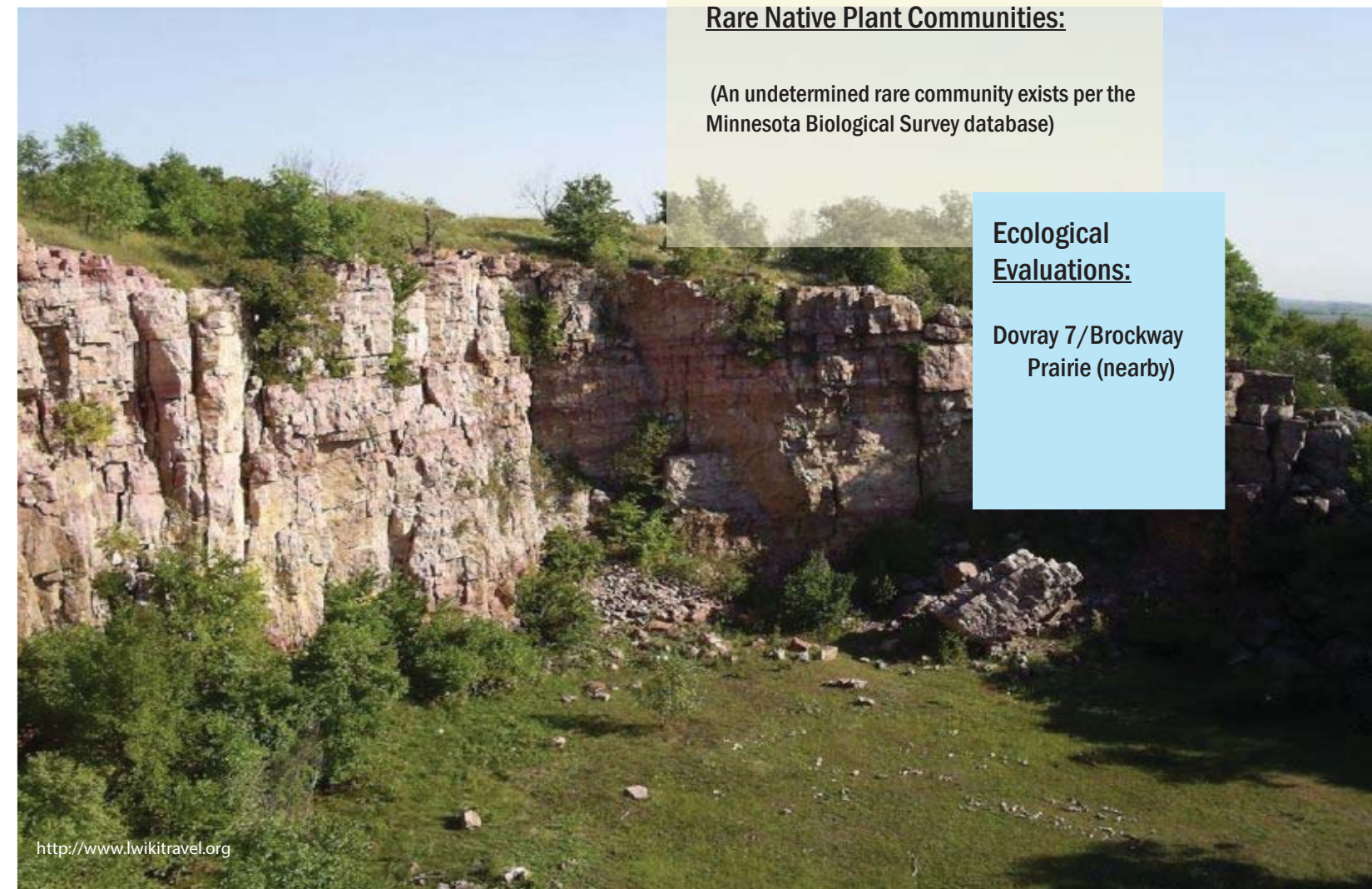
Rock

Rare Native Plant Communities:

(An undetermined rare community exists per the Minnesota Biological Survey database)

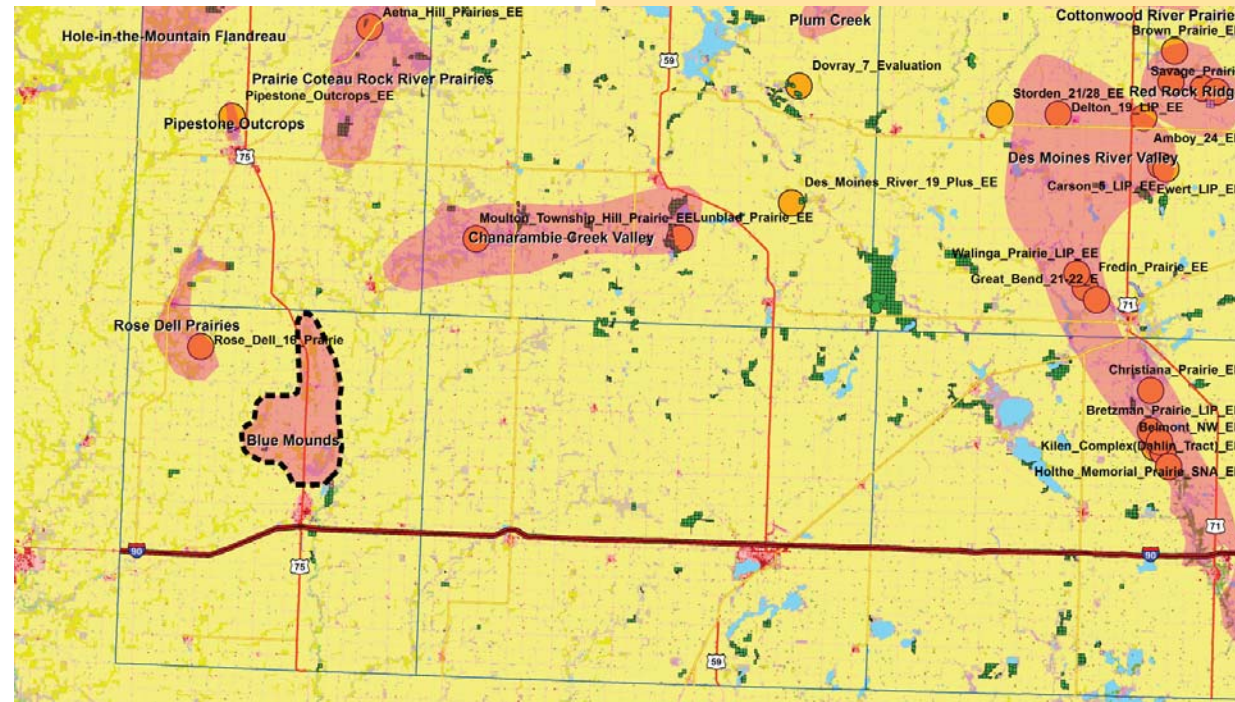
Ecological Evaluations:

Dovray 7/Brockway
Prairie (nearby)



Blue Mounds

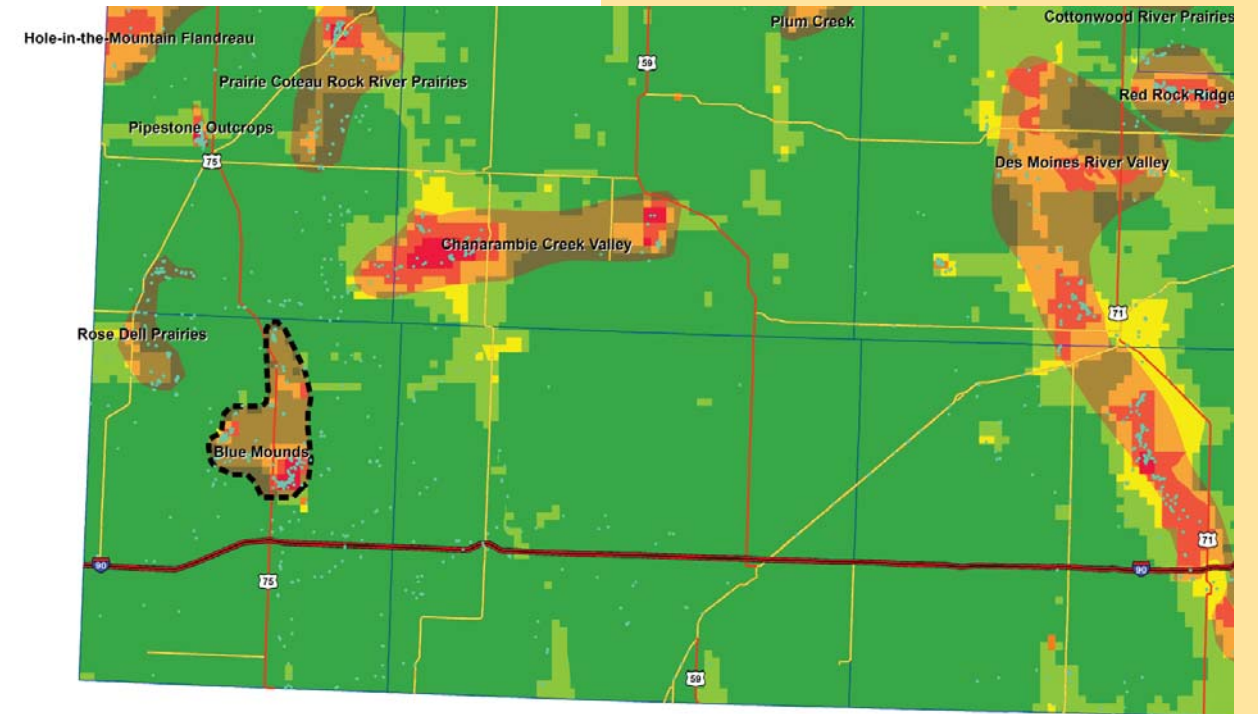
Ecological Evaluations, Land Cover, Public Ownership



Please see Legend at the front of the Opportunity Area Descriptions for a key to this map

Blue Mounds

Marxan Prioritization, Element Occurrences



Legend

- Profiled COA
 - Conservation Opportunity Area
 - Rare Feature
 - County Boundary
 - Large Lake
- Marxan Conservation Prioritization**
- Lowest Priority
 - Low Priority
 - Medium Priority
 - High Priority
 - Highest Priority
- Interstate Highway
 - U.S. Trunk Highway
 - MN Trunk Highway