

Blanket Flower Prairie

Conservation Challenges:

- *Conversion to agricultural uses
- *Changes in agricultural practices
- *Increased draitniling makes stream flow more flashy, reduces groundwater
- *Waterways are more incised, with more alluvium, and higher turbidity
- *Invasive spp.: spotted knapweed, leafy spurge, EAB
- *Habitat fragmentation
- *Valley bottoms prone to high-volume floods of increased frequency
- *Fire-dependent communities are likely to decline due to difficulty in restoring natural fire regimes
- *Gravel mining

Conservation Opportunities:

- * Minnesota Prairie Plan
- * Close proximity to other OAs

Existing Conservation Network:

State Parks:

State Forests:

SNAs: Blanket Flower

Aquatic Management Areas: Ida Lake

Wildlife Management Areas:
Barnesville

Rare Species:

- Bald Eagle
- Blanket-flower
- Canadian Wormwood
- Few-flowered Spike-rush
- Greater Prairie-chicken
- Hair-like Beak-rush
- Hill's Thistle
- Least Moonwort
- Louisiana Broomrape
- Macoun's Gentian
- Marsh Arrow-grass
- Nutall's Ground-rose
- Oat-grass
- Plains Pocket Mouse
- Plains Reedgrass
- Powesheik Skipper
- Prairie Moonwort
- Prairie Vole
- Regal Fritillary
- Sandhill Crane
- Small White Lady's Slipper
- Sterile Sedge
- Trumpeter Swan
- Western White Prairie-clover
- Whorled Nut-rush



Blanket Flower Prairie Opportunity Area

Ecological Significance:

The Blanket Flower Prairie Opportunity Area straddles the beach ridges that delineate the eastern boundary of the Red River Valley. Soils tend to be gravelly and freely draining, providing habitat for dry prairies and for oak and oak/ aspen openings. In addition, the rolling terrain provides habitat for calcareous fens and other seepage meadows and carrs. Much of the original land cover was a mosaic of mesic prairie and wet meadows. It is also one of the few locations that has habitat for its namesake wildflower, the blanket flower.



Counties:

Wilkin

Rare Native Plant Communities:

- Calcareous Fen (Northwestern)
- Mesic Prairie (Northern)
- Wet Prairie (Northern)
- Wet Saline Prairie (Northern)
- Wet Seepage Prairie (Northern)

Ecological Evaluations:

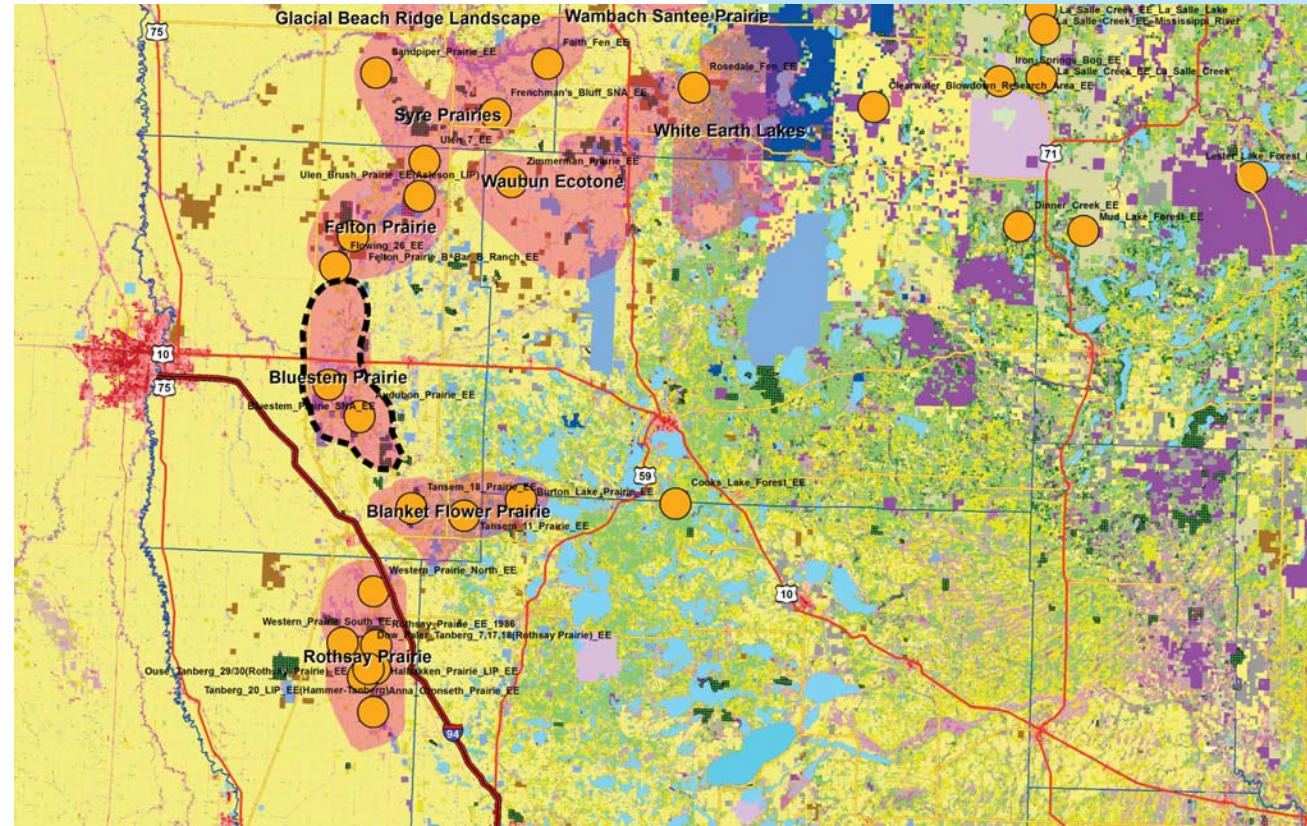
- Anna Gronseth Prairie
- Ouse Tanberg 29/30 Praiire
- Rothsay Prairie
- Western Prairie North/South



Photo courtesy of minnesotaseasons.com

Blanket Flower Prairie

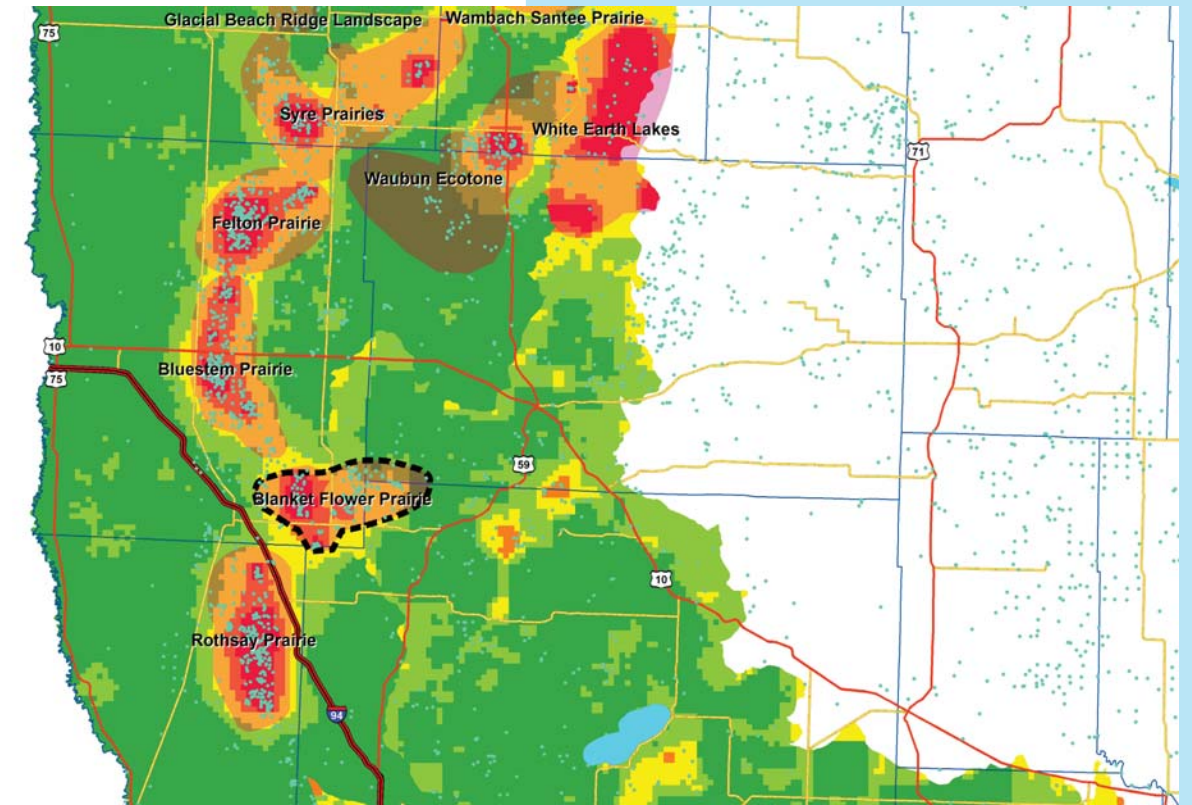
Ecological Evaluations, Land Cover, Public Ownership



Please see Legend at the front of the Opportunity Area Descriptions for a key to this map

Blanket Flower Prairie

Marxan Prioritization, Element Occurrences



Legend

- Profiled COA
- Conservation Opportunity Area
- Rare Feature
- County Boundary
- Large Lake

Marxan Conservation Prioritization

- Lowest Priority
- Low Priority
- Medium Priority
- High Priority
- Highest Priority
- Interstate Highway
- U.S. Trunk Highway
- MN Trunk Highway