

Conservation Partners Legacy Grants - Online Applications

Jamie Gangaware

Admin

[List Applications](#)

[Summary Spreadsheet](#)

[Log Out](#)

Project Summary Project Info Site Info Budget Info Review & Approval Additional Info Application Submission

Project Summary

Project Name and Contact

Project Name:	Open Vistas for Grassland Birds	Project Manager:	Greg Hoch
Organization Name:	MN Prairie Chicken Society	Title:	Bd member
Organization Type:	Non-Profit	Phone:	218-443-0476
Mailing Address 1:	26624 N Tower Rd	Email:	gahoch@umn.edu
Mailing Address 2:			
City:	Detroit Lakes		
State:	MN		
Zip Code:	56501		

Project Location Summary

Primary County:	Becker	Secondary Land Ownerships:	
Nearest City:	Detroit Lakes		
Project Site Name:	Waterfowl Production Areas		
Primary Land Ownership:	Federal		

Project Activity Summary

Primary Activity:	Enhancement	Primary Habitat Type:	Prairie
Additional Activities:		Additional Habitats:	Wetland
Total Project Sites:	22		
Total Project Acres:	95		

Project Funding Summary

Total Grant Amount Requested:	\$124,999
Total Match Amount Pledged:	\$18,800
Additional Funding:	
Total Project Cost:	\$143,799
Estimated Project Completion Date:	2014-06-30

Summary

The prairies of western Minnesota would have originally been devoid of trees. Today, many areas have significant levels of trees. Trees affect the very character and nature of prairies and grasslands. Tree leaves shade the sun-loving prairie grasses and wildflowers. The branches provide perches for hawks, owls, and crows. The bases of the trees provide den sites for foxes, raccoons, and skunks. All of these predators can have dramatic impacts on nest success of waterfowl, gamebirds, and songbirds near these trees. Our goal is to remove trees from western Minnesota prairies and restored grasslands to recapture the feel of presettlement Minnesota as well as benefit the wildlife species that depend on these habitats. In the Audubon Societies 2009 State of the Birds Report, grassland birds have declined more than any other group of bird in this country. We hope to increase populations of these species for their own benefit as well as the benefit of birdwatchers and hunters.

Problem Statement

The settlement of the prairie had a number of effects on the landscape. First, some of the prairies were converted to agricultural fields. This broke up the landscape decreased the ability of fires to move across the landscape. Next, settlers planted trees for firewood, fencing, and to make the prairies appear more like back home in Ohio, New England, or Norway. These activities fundamentally altered the prairie and ecosystem processes that maintained the prairie. Our goal is to try to return parts of the Minnesota landscape to its original component of plant species, and thereby benefit the wildlife native to the area. In Minnesota, only one percent of the original prairie exists (Samson and Knopf 1994). This represents the quantity of prairie on the landscape. After habitat loss, the greatest threat to wildlife is invasive species, which affects the quality of the habitat. Trees, both native species (boxelder, ash, and cottonwood), as well as exotics species (Russian olive, Siberian elm, buckthorn) change the very character of prairies and grasslands. Trees affect prairie wildlife in a number of ways. Duck nest success decreased by 84% in areas with trees compared to areas with no trees (Gazda et al 2002). Other studies found that mallard broods avoided wetlands with trees around the edges (Rumble and Flake 1983). Pheasant nest success doubled once nests were greater than 600 meters from trees (Snyder 1984). Some songbirds will avoid grassland habitat within 800 meters of trees (Hughes 1999). Grasslands with trees present create hostile nesting habitats for grassland birds.

Project Objectives

The objective of this project will be to remove trees from wildlife habitat in northwestern Minnesota. This will return these areas to a closer approximation of presettlement conditions when trees were absent from Minnesota prairies. This will both create and enhance habitat for many species of grassland nesting birds and other wildlife, as well as grassland plants. The first measurable result of this project will be the acreage of trees removed from each site. All these restoration activities (time of year, equipment used, chemicals applied) will be entered into a Geographic Information System (GIS) so that we can carefully track results through time. We will continue to monitor the sites annually to check for resprouting and seedling emergence. The long-term benefits will be the creation of more and better wildlife habitat in Minnesota's prairies. We will measure the effects of our work in several ways. First, most of these areas are within the prairie chicken survey area. We will be able to observe new booming grounds that appear or whether existing grounds become larger or more stable, less year-to-year variation. Second, some of these areas are within the USFWS's 4 square mile waterfowl survey. We would expect to see an increase in waterfowl use and brood numbers at sites that are treated.

Methods

Tree removal is a difficult task that must be done in stages. Stage 1 has been completed at a number of sites. All of the large trees were cut down and the stumps chemically treated. Unfortunately there is always some resprouting, even with treatment. With more sunlight on the soil surface thousands of tree seeds will also germinate. This project will be conducted on a series of WPAs in Clay and Becker Counties. In the past month, USFWS staff have visited each site, developed a site-specific management plan, and estimated contractor costs. We estimate that on average treatment will cost \$1500/acre. The treated acres tell only part of the story. We know that nest success is halved within 600 meters of trees. Therefore, for every isolated tree, tree row, or woodlot, we are improving habitat over an area 1200 meters in diameter. That comes out to almost 270 acres impacted by work done on only a few acres at each site. We will use several new pieces of equipment including a turbo-saw and sickle-bar mower to remove seedlings and stumps sprouts from previous work. We will also use a newer more effective chemical for stump treatment, Garlon 4. When possible we will do this during the summer in an effort to use up the energy/carbohydrate reserves of the plants. Some sites are near water and will have to be done in the winter when the wetlands are frozen. We plan to get the site to the state where the woody vegetation is gone and long-term maintenance can be accomplished through a prescribed fire program. Once the woody material has been cut it will be stacked. At some sites we will burn the piles. At more sensitive sites we will wait until the ground is frozen and then bring in equipment to remove the woodpiles. At Flickertail WPA we will do new work to continue the efforts of the MPCS's CPL grant from last year at the site. Volunteers will do some of the work from the DL Friends group. However, private contractors will do the bulk of the work. After the work is completed, USFWS staff will overseed all disturbed areas with a diverse mix of local ecotype prairie seed.

Project Timeline

Time Frame

May 2014

May 2014

Goal

remove woody vegetation from all sites

**reseed any disturbed sites with local
ecotype seed**

Identify short and long term maintenance and management work required to sustain this project and source(s) of funding

Work needed

Prescribed fire

Who is responsible

USFWS

Funding source

USFWS

Conservation Partners Legacy Grants - Online Applications

Jamie Gangaware

Admin

[List Applications](#)

[Summary Spreadsheet](#)

[Log Out](#)

Project Summary

Project Info

Site Info

Budget Info

Review & Approval

Additional Info

Application Submission

Project Information

Answer each of the following questions in 1000 characters or less; descriptions/definitions are available in the [Criteria and Scoring Table](#).

1. Describe the local support for this project.

The partners in this project are from the area where these grant dollars will be spent. They are familiar with these WPAs for hunting and birdwatching. Partners include the MN Prairie Chicken Society, Clay County Pheasants Forever chapter, Friends of the Detroit Lakes Wetlands, and the Detroit Lakes Wetland Management District.

2. Describe the degree of collaboration for this project.

This project is a partnership between the MN Prairie Chicken Society, the Clay County chapter of Pheasants Forever, the Friends of the Detroit Lakes Wetland Management District, and the USFWS office at Detroit Lakes. The MPCS is the primary author on the grant and will handle the administration. PF will contribute cash. The Friends group will contribute volunteer hours to operate equipment. The USFWS will contribute their own tree removal activities at these sites as well as oversight of grant contractors.

3. Describe any urgency associated with this project.

The first phase of this project is already completed. This phase was financed through the USFWS with Federal dollars. They have cut and chemically treated the stumps of all the large trees at each of these sites. This grant is for the second phase of this work. First, some of the stumps resprouted despite chemical treatment. We will cut down the suckers and retreat using new chemicals (Garlon 4). Second, we exposed the seedbed to sunlight when we removed the tree canopy. Some sites have a thick carpet of seedlings. If not treated soon, we will be back to a forested condition and have to start over from the beginning. It is our hope that these activities, followed by overseeding with local ecotype prairie seed will move the ecosystem to the point where it can be maintained in the long-term with fire. We feel that if we are not able to apply the second round of treatments in the very near future the effort and money/effort already applied to these areas will be lost.

4. Discuss if there are multiple benefits resulting from your project, identifying those species, habitats, etc.

This project will benefit a number of grassland bird species. Prairie chickens and pheasants are largest birds on the landscape, and have the largest area requirements. We will use these two species as umbrella species (Poiani 2001, Winter 2006) for Minnesota grasslands wildlife. By managing for these species, we are managing for dozens of other species. Species that will benefit include the waterfowl, primarily mallards, blue-winged teal, and canvasbacks. Seven of the twenty species Audubon lists on their 20 Common Birds in Decline will benefit from the habitat enhancements in this project. The work will also improve or create habitat for all nine of the species listed as grassland obligates under the Partners in Flight Northern Tallgrass Prairie Plan (Physiographic Area 40). This project will also increase habitat quality for at least 17 species listed on the Prairie Pothole Joint Venture Plan for Bird Conservation Region 11.

5. Discuss the habitat benefits resulting from your project.

Any effort to remove trees from grasslands will benefit the sun-loving prairie plants below the trees as well as the wildlife nesting in the grass. This is a hard sell to many people. Most assume that trees are natural and that planting trees is a good thing. Trees are good, in the appropriate places. But in ecosystems which are defined by their lack of trees inhabited by wildlife largely intolerant of trees, woody species can be detrimental to the landscape and the wildlife inhabiting the landscape.

6. Describe how your project is consistent with sound conservation science.

Conservation science tells us that grassland obligate or dependent birds have suffered

the greatest decline relative to any other group over the last four decades. The scientific data is unanimous that trees in grasslands are detrimental to grassland birds. Trees will force some bird species to avoid an area of habitat. Trees will also increase the rates of nest predation, turning a patch of habitat into a population sink. In either case, what looks to human eyes to be grassland habitat may not be habitat at all for some species, or may be poor habitat for others. The best science tells us that nest density and nest success will be higher in grasslands and prairies without trees. DNR offices that have worked on tree removal work through MPCs HE grants and other funds include Crookston, Detroit Lakes, Fergus Falls, and LQP. USFWS offices that have large tree removal efforts include Glacial Ridge NWR, Detroit Lakes WMD, Fergus Falls WMD, and Morris WMD.

7. Indicate if your project is adjacent to protected lands, describing those lands (ownership, public access, etc.)

Project is on Federally owned public lands.

8. Discuss if there is full funding secured for this project and the sources of funding.

All of the funding for the match for this project is secured. Sources of funding include cash donations from the PF chapter, volunteer time from the DL Friends, force account resources from the USFWS, and WRP dollars from the NRCS office in Detroit Lakes.

9. Discuss if CPL Grant funds will supplement or supplant existing funding. Discuss how these CPL funds will impact your organization's current budget.

These dollars will not supplant any existing funds. All grant dollars will go to contractors. The MPCs will not net any money from this grant. All dollars will be pass through dollars from the state through the MPCs to the contractors. Due to staffing, work loads, and shrinking Federal budgets, this work cannot be done by the USFWS without external assistance such as this grant program.

10. Describe public access at project site for hunting and fishing, identifying all open seasons.

All of these projects are on USFWS Waterfowl Production Areas open to all hunting season.

11. Describe the sustainability of your project.

Once we have a second treatment completed on these sites, we hope to have the site to the point where long-term maintenance can be done through the fire program. This will hopefully eliminate the future need for heavy equipment and chemical use at each site.

12. Discuss use of native vegetation (if applicable).

The USFWS Detroit Lakes office harvests its own seed from both native and restored prairies. This assures that we always use local ecotype seed and the seed never travels farther than one county. We will be reseeding many of these areas once the tree removal/treatment work is done.

13. Discuss your budget and why it is cost effective.

One hundred percent of the grant dollars will go to contract work. The contractors we will probably work with have a long history of this type of work with the USFWS office in Detroit Lakes. They understand the bid process, invoices, and exactly what the biological staff wants them to do and how to do it. Because of this history, things go smoothly and there is minimum supervision needed in the field. Together, this makes for a smooth and efficient operation. It is much more cost-effective for agencies to hire contractors than to spend their own time and purchase equipment. Last, it is cost effective because all grant dollars will go directly to small businesses in Minnesota, stimulating the rural economy in the area the work is done.

14. Describe your organization's ability to successfully complete this work, including experience in the area of interest and ability to successfully implement the proposed project. Include descriptions of your most recent grant experience and if the expected outcomes were achieved.

The grant writer/administrator successfully wrote four CPL grants last year through the MPCs, DL Friends, and MWA. MPCs recently submitted our final report for our first CPL grant. I have also written five DNR Heritage Enhancement (HE) grants in the last five

years. Working with the DL Friends group, I have been funded for the last four rounds of the LCCMR Habitat Corridors Partnership (HCP) program. I have also successfully written two NAWCA (North American Wetland Conservation Act) grants in the past two years. Work covered under these grants has included tree removal, wetland restoration, fire management, and grassland seeding. We have achieved the outcomes and goals for all the grants we have completed. Several of these grants are still open and we are working to complete them. All of these grants involve working through DNR or USFWS offices to have contractors work on WPAs or WMAs.

15. Discuss how your project supports landscape level plans. Use additional sources for information if needed or available.

This work supports the overall plans of preserving prairies and grasslands for grassland nesting birds and other species. Recently, the DNR, USFWS, TNC, BSWR, MPCS, and PF have been working to develop a Prairie and Grassland Comprehensive Plan. The sites in this project are part of the GIS models used to develop that plan. Any work to increase the quality of the habitat at these sites will help wildlife at both the site and landscape level. All of these sites are arrayed in a N-S orientation along the beach ridges of Glacial Lake Agassiz, creating natural corridors for movement of wildlife. In this area, there are some large complexes of grasslands and smaller patches between these complexes. This project will improve habitat in both the complexes and the patches within the corridors that connect the complexes.

16. Discuss how your project supports species plans. Use additional sources for information if needed or available.

This project will positively impact the habitat for a number of wildlife species. Many of these species are listed under the Prairie Pothole Joint Venture plan and there are target populations to manage for across the three state area. The only species affected by our project that currently have state plans are pheasants and waterfowl. The work done under this grant will contribute to the efforts of both the DNR's Waterfowl Plan as well as the national North American Waterfowl Management Plan (NAWMP). Specific to this grant, this work will also positively affect pheasants at the northern edge of their range in the state and addresses the goals of the MN Pheasant Plan. The North American Grouse Partnership (NAGP) has developed national plans for all species of grassland grouse. Grouse species that could use this habitat include both prairie chickens and sharp-tailed grouse.

17. Discuss how your project conforms to the Statewide Conservation and Preservation Plan.

The Statewide Conservation Plan states that one goal is to "Restore ecoregion appropriate, landscape-scale complexes of habitat...with a broader goal of developing/maintaining conservation corridors." This project does both, it removes inappropriate prairie vegetation, trees, restores native grasses and wildflowers. Second, all of these project sites are within the corridor along the eastern edge of the Red River Valley. WPAs and WMAs along this area form a natural N-S corridor for species as they migrate in the spring and fall. This N-S orientation will also allow species to respond to climate change predictions by moving their ranges latitudinally.

18. Discuss how your project conforms to the State Wildlife Action Plan (if applicable).

This project will primarily focus on the Red River Valley subsection of the Prairie Parkland Province. However, several sites will be on the eastern edge, close to the Hardwood Hills subsection. The work on this project will directly benefit at least 26 SGCN bird species and will indirectly benefit other birds as well as SGCN plant, mammal, and reptile species. The scientific literature has shown a direct negative impact of trees to several of the SGCN species listed in the Action Plan. By removing trees, we will benefit these species at the landscape level.

Conservation Partners Legacy Grants - Online Applications

Jamie Gangaware

Admin

[List Applications](#)

[Summary Spreadsheet](#)

[Log Out](#)

Project Summary
 Project Info
 Site Info
 Budget Info
 Review & Approval
 Additional Info
 Application Submission

Site Information

*you may group your project sites together as long as land ownership, activity and habitat information is the same for the land manager

Land Manager

Name: **Ryan Frohling** Phone: **218-8443402**
 Organization: **USFWS** Email: **ryan_frohling@fws.gov**
 Title: **Deputy Project Leader**

Site Information

Land Ownership: **Federal** Acres: **3**
 Site Name(s): **Gjerve WPA** Click here to [View Site Map](#)
 Activity: **Enhancement**
 Habitat: **Prairie**

Site Information

Land Ownership: **Federal** Acres: **22**
 Site Name(s): **Hatchet Lake [REDACTED]** Click here to [View Site Map](#)
 Activity: **Enhancement**
 Habitat: **Prairie**

Site Information

Land Ownership: **Federal** Acres: **6**
 Site Name(s): **Hoykens WPA** Click here to [View Site Map](#)
 Activity: **Enhancement**
 Habitat: **Prairie**

Site Information

Land Ownership: **Federal** Acres: **2**
 Site Name(s): **Jarvis WPA** Click here to [View Site Map](#)
 Activity: **Enhancement**
 Habitat: **Prairie**

Site Information

Land Ownership: **Federal** Acres: **13**
 Site Name(s): **Korell WPA** Click here to [View Site Map](#)
 Activity: **Enhancement**
 Habitat: **Prairie**

Site Information

Land Ownership: **Federal** Acres: **9**
 Site Name(s): **Zillmer Prairie WPA** Click here to [View Site Map](#)
 Activity: **Enhancement**
 Habitat: **Prairie**

Site Information

Land Ownership: **Federal** Acres: **35**
 Site Name(s): **Flickertail WPA [REDACTED]** Click here to [View Site Map](#)
 Activity: **Enhancement**
 Habitat: **Prairie**

Site Information

Land Ownership: **Federal** Acres: **7**

Site Name(s):	Rollag WPA	Click here to View Site Map
Activity:	Enhancement	
Habitat:	Prairie	
Site Information		
Land Ownership:	Federal	Acres: 10
Site Name(s):	Balke Lake WPA	Click here to View Site Map
Activity:	Enhancement	
Habitat:	Prairie	
Site Information		
Land Ownership:	Federal	Acres: 10
Site Name(s):	Kruger WPA	Click here to View Site Map
Activity:	Enhancement	
Habitat:	Prairie	
Site Information		
Land Ownership:	Federal	Acres: 2
Site Name(s):	Lake Park WPA	Click here to View Site Map
Activity:	Enhancement	
Habitat:	Prairie	
Site Information		
Land Ownership:	Federal	Acres: 17
Site Name(s):	Marks WPA	Click here to View Site Map
Activity:	Enhancement	
Habitat:	Prairie	
Site Information		
Land Ownership:	Federal	Acres: 10
Site Name(s):	Plum Grove Lake WPA	Click here to View Site Map
Activity:	Enhancement	
Habitat:	Prairie	
Site Information		
Land Ownership:	Federal	Acres: 2
Site Name(s):	Erickson WPA	Click here to View Site Map
Activity:	Enhancement	
Habitat:	Prairie	
Site Information		
Land Ownership:	Federal	Acres: 24
Site Name(s):	Larson WPA	Click here to View Site Map
Activity:	Enhancement	
Habitat:	Forest	
Site Information		
Land Ownership:	Federal	Acres: 10
Site Name(s):	Three Jetvig Lakes	Click here to View Site Map
Activity:	Enhancement	
Habitat:	Prairie	
Site Information		
Land Ownership:	Federal	Acres: 1
Site Name(s):	Lethenstrum WPA	Click here to View Site Map
Activity:	Enhancement	
Habitat:	Prairie	
Site Information		

Land Ownership: **Federal** Acres: **2**
Site Name(s): **Anderson WPA** Click here to [View Site Map](#)
Activity: **Enhancement**
Habitat: **Prairie**

Site Information

Land Ownership: **Federal** Acres: **6**
Site Name(s): **Lofgren/ notch WRP site** Click here to [View Site Map](#)
Activity: **Enhancement**
Habitat: **Forest**

Site Information

Land Ownership: **Federal** Acres: **3**
Site Name(s): **Helliksen WPA** Click here to [View Site Map](#)
Activity: **Enhancement**
Habitat: **Prairie**

Site Information

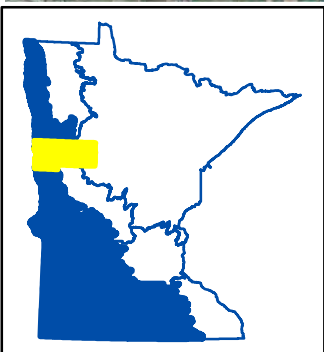
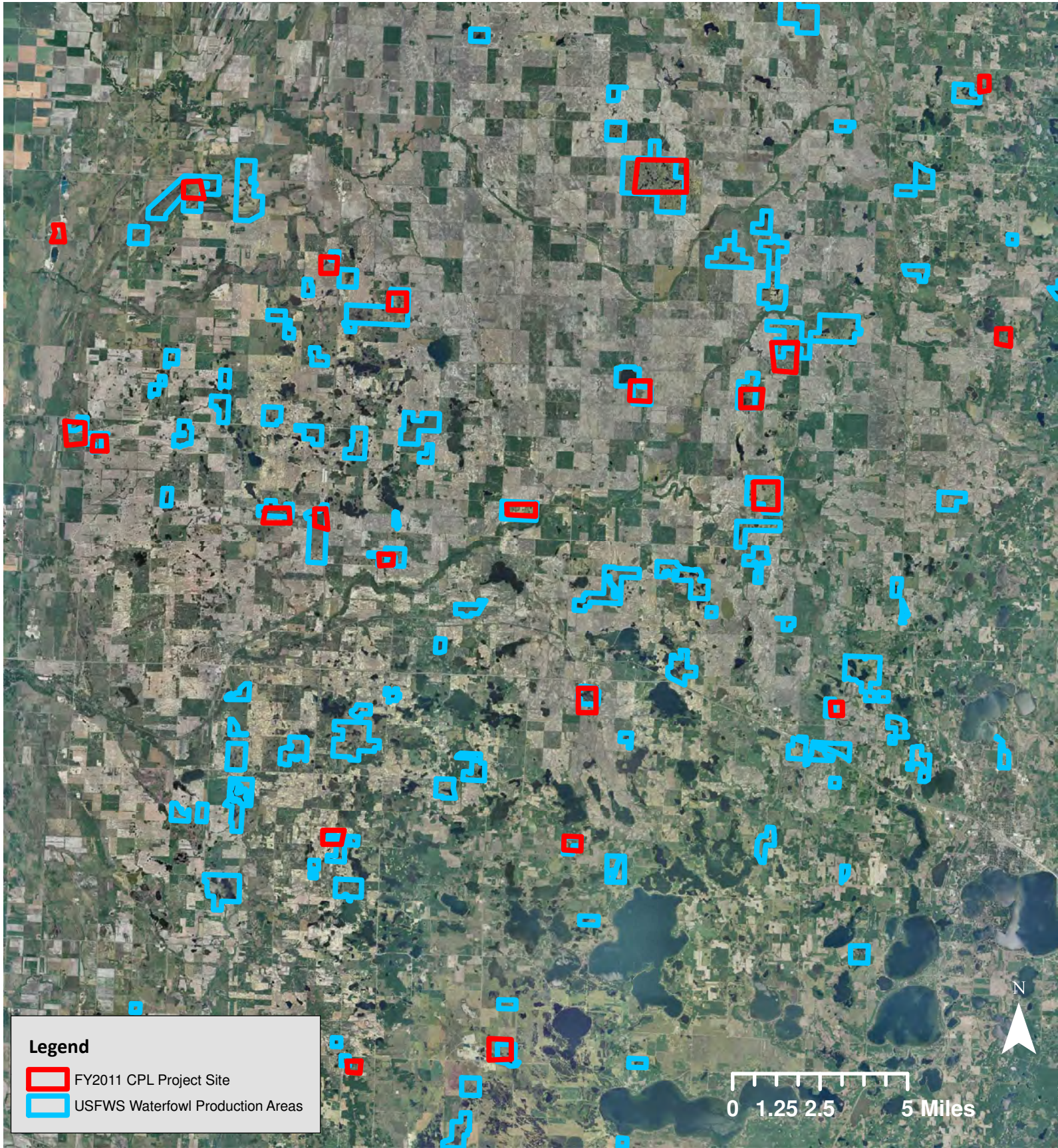
Land Ownership: **Federal** Acres: **5**
Site Name(s): **Kent WPA** Click here to [View Site Map](#)
Activity: **Enhancement**
Habitat: **Prairie**

Site Information

Land Ownership: **Federal** Acres: **2**
Site Name(s): **Spring Marshes WPA** Click here to [View Site Map](#)
Activity: **Enhancement**
Habitat: **Prairie**

Site Information

Land Ownership: **Federal** Acres: **2**
Site Name(s): **Matter WPA** Click here to [View Site Map](#)
Activity: **Enhancement**
Habitat: **Prairie**



CPL FY11-073
Open Vistas for Grassland Birds
MN Prairie Chicken Society
Becker County
LSOHC Prairie Planning Section



Conservation Partners Legacy Grants - Online Applications

[Jamie Gangaware](#) [Admin](#) [List Applications](#) [Summary Spreadsheet](#) [Detailed Spreadsheet](#) [Log Out](#)

● Project Summary
 ● Project Info
 ● Site Info
 ● **Budget Info**
 ● Review & Approval
 ● Additional Info
 ● Application Submission

Budget Information

Organization's Fiscal Contact Information

Name:	Earl Johnson	Street Address 1:	25170 Almquist Rd
Title:	treasurer	Street Address 2:	
Email:	moccwood.setter@gmail.com	City:	Detroit Lakes
Phone:	218-849-2863	State:	MN
		Zip Code:	56501

Budget Subtotals

Budget Item	Grant	Match	Total		
Personnel		\$1,000	\$1,000		
Contracts	\$124,999	\$16,800	\$141,799		
Fee Acquisition with PILT					
Fee Acquisition without PILT					
Easement Acquisition					
Easement Stewardship				In-kind Total	Cash Total
Travel (in-state)				\$1,000	\$17,800
Professional Services					
DNR Land Acquisition Cost					
Equipment/Tools/Supplies					
Additional Budget Items		\$1,000	\$1,000		
Total:	\$124,999	\$18,800	\$143,799		

Details

Personnel

Name	Title / work to be completed	Amount	Grant/Match	In-kind/Cash
Friends volunteers	tree removal work	\$1,000	Match	In-kind
Totals	Grant: \$0 Match: \$1,000	Total: \$1,000		

Contracts

Contractor Name	Contracted Work	Amount	Grant/Match	In-kind/Cash
TBD - local contractors	Tree removal	\$124,999	Grant	
USDA- WRP contracts	Tree removal	\$16,800	Match	Cash
Totals	Grant: \$124,999 Match: \$16,800	Total: \$141,799		

Additional Budget Items

Item	Description	Amount	Grant/Match	In-kind/Cash
Cash	Cash contribution from PF	\$1,000	Match	Cash
Totals	Grant: \$0 Match: \$1,000	Total: \$1,000		

Conservation Partners Legacy Grants - Online Applications


Jamie Gangaware

Admin

[List Applications](#)


[Summary Spreadsheet](#)

[Log Out](#)


 [Project Summary](#)


 [Project Info](#)

 [Site Info](#)

 [Budget Info](#)

 [Review & Approval](#)

 [Additional Info](#)

 [Application Submission](#)

Project Review and Approval

A Project Review and Approval Form must be completed by each Land Manager named within the Site Info tab and Land Managers only need to complete one form for all sites they manage. Submitting this form fulfills the following requirements:

- Provides the results of the Natural Heritage Database Review,
- Allows for technical review of the project by the Land Manager, and
- Verifies that the public agency approves the work to be done (or acquisition) on land they manage.

You, as the applicant, are responsible for meeting with the Land Manager and receiving a completed Project Review and Approval Form. This form must contain an original signature from the Land Manager and you must upload it below as a PDF.

Each project will require at least one Project Review and Approval form. You may attach up to 4 forms on this page, but if you need more room you may attach up to three more on the "Additional Info" tab. If your project is working under 3 Land Managers, you must receive and submit a form from each manager.

No late Project Review and Approval Forms will be accepted. Applications lacking any necessary approval forms will be deemed incomplete and not considered for funding.

Answer the following questions, then attach the form(s)

No **Natural Heritage** elements were found within my project site(s):

Project Review and Approval Forms

[Uploaded Form 1](#)

CPL Project Review and Approval Form

REVIEWER INFORMATION:

Land manager/ easement holder name:	Ryan Frohling
Agency:	USFWS
Title:	Deputy Project Leader - Detroit Lakes WMD
Phone:	218-844-3402
Email:	ryan.frohling@fws.gov

PROJECT INFORMATION:

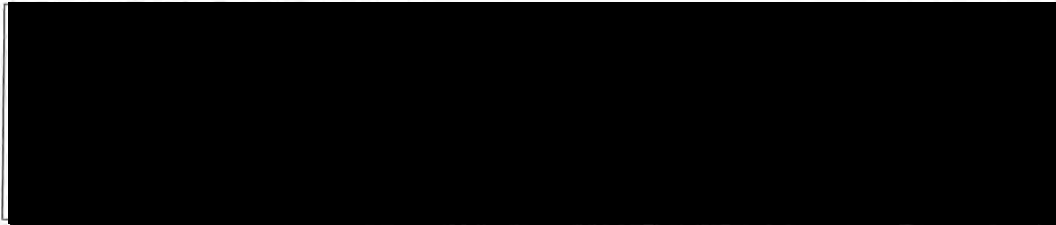
Project Name:	Treeless Vistas for Grassland Birds
Contact Person:	Greg Hoch
Organization:	MPCS
Email:	gahoch@umn.edu

Please check the appropriate boxes:

- I have read the application and discussed this proposed project with the above listed Organization Contact Person.
 For work on easements, the private landowner has been contacted and has given support and approval for this project.

I have performed a Natural Heritage Database review and found:

- this project to have no features within one mile.
 this project to have features within one mile, but project is not likely to adversely affect those features. I have listed the features below and recommended the following minimization strategy:



- this project is likely to adversely affect Natural Heritage features. I feel that this project is important and should be forwarded to DNR Ecological Resources staff for further review.
 I do not have access to the Natural Features database and will forward this completed form to DNR by Friday, August 27th 2010 to **CPL Staff** at LSCPLGrants.DNR@state.mn.us to complete the Natural Heritage Review.

I have discussed what role my office will be expected to have in this project and find that the project, as described will require:

- minimal or no involvement from my office for completion.
 a commitment of involvement by staff that is reasonable and can be accomplished with current staffing levels and workload.
 an amount of staff involvement that cannot be committed during the project time period with current staffing levels. Unless additional staffing can be committed from other offices, Divisions or appropriate partners, I feel this project cannot be completed within the project timeline to our desired standards.
 I have discussed permits and applications that the applicant may be responsible for using the Working on DNR Lands and Working on Public Lands, or Working on Private Lands documents.

CPL Project Review and Approval Form

For Acquisitions Only:

- This project is for an acquisition to be transferred to a public agency by applicant:
- I have discussed any required Initial Development (facilities, habitat, etc.) work that is required before the transfer with the applicant.
 - I have discussed all applicable costs of those developments and what party is responsible for those costs.

Complete the following cost tables (required work to bring to agency standards).

Habitat Development	# Acres	Cost/-Acre	Total	Funding Source	Applicant is responsible for:
Prairie Grassland					Choose
Forest/ Woody Cover					Choose
Wetland					Choose
Totals					

Facility Development	Cost	Funding Source	Applicant is responsible for:
Boundary Survey			Choose
Posting/ Fencing			Choose
Wood Routed Sign			Choose
Access Roads and Trails			Choose
User Facilities, Access, Parking Lots			Choose
Well Sealing/ Site Clean-up			Choose
Total			

Upon final review of this project:

- I find this project to be consistent with sound conservation science. This work will benefit area fish, game and wildlife by restoring, enhancing or protecting forests, wetlands, prairies and habitat and is consistent with the management or stewardship plan for this land. (APPROVAL)
- I find that this project does not follow the management or stewardship plan for this land and does not fit within the long range goals for this land at this time on the local level. (DECLINE)
- I find that this project should be sent up to a higher level within the agency for further review and decision. I have forwarded the Project Planning Form and this Review and Approval Form for further review to:

Name: _____	Phone: _____
-------------	--------------

By checking this box and signing my name below I certify that I have met with the above applicant and discussed the proposed project and have provided feedback to the applicant. I understand I must provide this document as a PDF with my original signature on it to the applicant to submit a complete application.

Name: *[Signature]*

Date: 9/19/2010

Comments:

CPL Project Review and Approval Form

REVIEWER INFORMATION:

Land manager/ easement holder name:	John Voz
Agency:	NRCS / DU
Title:	Wetland Restoration Specialist
Phone:	218-846-7360
Email:	john.voz@mn.usda.gov

PROJECT INFORMATION:

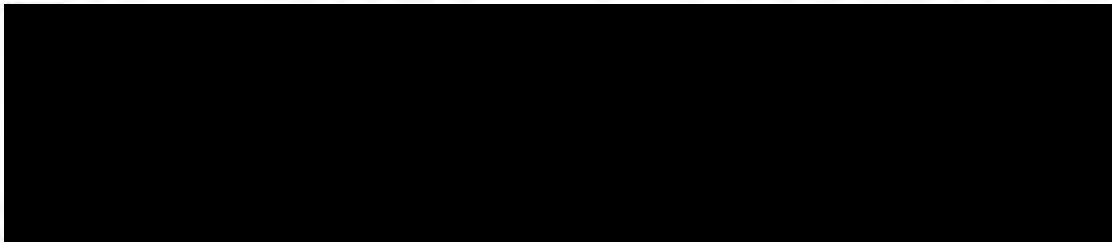
Project Name:	Treeless Vistas for Grassland Birds
Contact Person:	Greg Hoch
Organization:	MPCS
Email:	gahoch@umn.edu

Please check the appropriate boxes:

- I have read the application and discussed this proposed project with the above listed Organization Contact Person.
- For work on easements, the private landowner has been contacted and has given support and approval for this project.

I have performed a Natural Heritage Database review and found:

- this project to have no features within one mile.
- this project to have features within one mile, but project is not likely to adversely affect those features. I have listed the features below and recommended the following minimization strategy:



- this project is likely to adversely affect Natural Heritage features. I feel that this project is important and should be forwarded to DNR Ecological Resources staff for further review.
- I do not have access to the Natural Features database and will forward this completed form to DNR by Friday, August 27th 2010 to **CPL Staff** at LSCPLGrants.DNR@state.mn.us to complete the Natural Heritage Review.

I have discussed what role my office will be expected to have in this project and find that the project, as described will require:

- minimal or no involvement from my office for completion.
 - a commitment of involvement by staff that is reasonable and can be accomplished with current staffing levels and workload.
 - an amount of staff involvement that cannot be committed during the project time period with current staffing levels. Unless additional staffing can be committed from other offices, Divisions or appropriate partners, I feel this project cannot be completed within the project timeline to our desired standards.
- I have discussed permits and applications that the applicant may be responsible for using the Working on DNR Lands and Working on Public Lands, or Working on Private Lands documents.

CPL Project Review and Approval Form

For Acquisitions Only:

- This project is for an acquisition to be transferred to a public agency by applicant:
- I have discussed any required Initial Development (facilities, habitat, etc.) work that is required before the transfer with the applicant.
 - I have discussed all applicable costs of those developments and what party is responsible for those costs.

Complete the following cost tables (required work to bring to agency standards).

Habitat Development	# Acres	Cost/ Acre	Total	Funding Source	Applicant is responsible for:
Prairie Grassland					Choose
Forest/ Woody Cover					Choose
Wetland					Choose
Totals					

Facility Development	Cost	Funding Source	Applicant is responsible for:
Boundary Survey			Choose
Posting/ Fencing			Choose
Wood Routed Sign			Choose
Access Roads and Trails			Choose
User Facilities, Access, Parking Lots			Choose
Well Sealing/ Site Clean-up			Choose
Total			

Upon final review of this project:

- I find this project to be consistent with sound conservation science. This work will benefit area fish, game and wildlife by restoring, enhancing or protecting forests, wetlands, prairies and habitat and is consistent with the management or stewardship plan for this land. (APPROVAL)
- I find that this project does not follow the management or stewardship plan for this land and does not fit within the long range goals for this land at this time on the local level. (DECLINE)
- I find that this project should be sent up to a higher level within the agency for further review and decision. I have forwarded the Project Planning Form and this Review and Approval Form for further review to:

Name:		Phone:	
-------	--	--------	--

By checking this box and signing my name below I certify that I have met with the above applicant and discussed the proposed project and have provided feedback to the applicant. I understand I must provide this document as a PDF with my original signature on it to the applicant to submit a complete application.

Name: _____

Date: 9/22/10

Comments:

Conservation Partners Legacy Grants - Online Applications

Jamie Gangaware

Admin

List Applications

Summary Spreadsheet

Log Out

Project Summary

Project Info

Site Info

Budget Info

Review & Approval

Additional Info

Application Submission

Additional Information

List any additional details about your project here. Include your organization's history or charter to receive private contributions for local conservation or habitat projects. This is not required.

Supplemental Documents

If you / your project does not need to upload any of these documents, you may leave these upload boxes empty.

Upload additional information here, limited to Partner Commitment Letters, Letters of Support, Easement information, etc. You may email easement information only if it exceeds size limit while trying to submit the application; all other supporting documentation must be uploaded. Reference CPL Application # and name when emailing (provided upon application submission) or your email will be returned. Send emails to LSCPLGrants.DNR@state.mn.us

Financial Information Required for Non-Profit applicants requesting over \$25,000

990 Form or EZ990

Form 990 / EZ990

Audited Financials, unaudited financials as a second choice

Financials

Does your organization have a Conflict of Interest Policy?

No - Provide a brief description of how your organization would handle any conflicts of interest that may occur.

We would ask any member to remove themselves from the decision process and funding procedures.

List key staff or members here that will be participating with this project:

Greg Hoch (MPCS/USFWS) – grant writing and administration Shawn May (USFWS) – site surveys Ryan Frohling (USFWS) – contractor oversight Earl Johnson (MPCS/USFWS) - treasurer

List your organization's Board of Directors with affiliations:

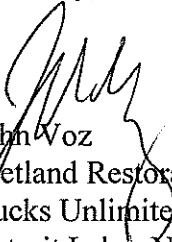
Pres–Brian Winter TNC Secr–Ross Hier DNR Treas–Earl Johnson DNR Doug Hedtke DNR Greg Hoch USFWS Scott Kahan USFWS Rob Naplin DNR Dan Svedarsky UMC Sara Vacek USFWS John Voz NRCS/DU

Date: September 22, 2010

CPL Grant Reviewers

All Reinvest in Minnesota and USDA Wetlands Reserve Program private land easements in Minnesota are perpetual. The WRP is for a 30 year term and the RIM program takes it into perpetuity.

Sincerely,



John Voz
Wetland Restoration Biologist
Ducks Unlimited Inc. / Contract employee
Detroit Lakes NRCS Field Office
Detroit Lakes, MN 56501
PH # 218-847-9392 Ext # 3

Conservation Partners Legacy Grants - Online Applications

Jamie Gangaware

Admin

[List Applications](#)

[Summary Spreadsheet](#)

[Log Out](#)

Project Summary

Project Info

Site Info

Budget Info

Review & Approval

Additional Info

Application Submission

Final Application Submission

This completes your CPL Grant Application. Please take the time to revisit the previous sections and make sure you have entered everything completely and correctly. Once you hit the submit button below, you will not be able to return to this application to make changes.

I certify that I have read the Conservation Partners Legacy Grants Program Request for Proposal, Program Manual and other program documents, and have discussed this project with the appropriate public land manager, or private landowner and easement holder.

I certify I am authorized to apply for and manage these grant and match funds, and the project work by the organization or agency listed below. I certify this organization to have the financial capability to compete this project and that it will comply with all applicable laws and regulations.

I certify that all of the information contained in the application is correct as of the time of the submission. If anything should change, I will contact CPL Grant Staff immediately to make corrections.

I certify that if funded I will give consideration to and make timely written contact to Minnesota Conservation Corps or its successor for consideration of possible use of their services to contract for restoration and enhancement services. I will provide CPL staff a copy of that written contact within 10 days after the execution of my grant, should I be awarded.

I certify that I am aware at least one Project Review and Approval form is required for every application and I must submit all completed forms by uploading them into this application. I have attached one form as necessary for each different Land Manager within my project.

I am aware that by typing my name in the box below, I am applying my signature to this online document.

Signature:

Greg Hoch

Organization / Agency:

MPCS

Title:

Bd Member

Date:

2010-09-15

Conservation Partners Legacy Grant Program
 FY2011 Round 1 Technical Review Comments and Scoring, Regional and Divisional Directors Comments

Proj ID	Organization Name	Project Name	Habitat	Technical Review Committee Scoring Comments	Amount Request	Score	Regional Comments	Meets Region Plan?	Rank	Region	Division Director's Comments
73	MN Prairie Chicken Society	Treeless Vistas for Grassland Birds	Prairie	How quickly will aspen re-grow--will it return to same state? So long term maintenance/sustainability? Sounds more like maintenance, not enhancement/restoration. Would logger harvest for free? May not be feasible here. Big benefit for woodcock and some grassland birds to get aspen at lower profile. Will be ongoing work--should funding be a one time deal?	\$242,500	136					Valid mgmt approach. From a silviculture view, its fighting nature. Constant battle. But fire has been removed from the ecosystem, so need to remove large trees. Are there other approaches?

Final Ranking Comments, Tech Review Committee

Admin costs for all RIM--is it actual or percent? Seems high compared to others. Partially fund admin costs? (Staff had confirmed these costs with applicants and this is their request.)

1st cut: anything below 99 is gone

2nd cut: Anything below 115 gone. That's 60% score--tough to fund things getting less than 50% of the total points.

3rd cut: Anything below 120 is gone. Not totally sold on the Renville - Frank and MPCs prairie shrubland apps.

4th cut: Moved Friends of Miss River up to being funded

5th cut: If dipping lower than recommended projects, look at MPCs--is small club; and Hennepin Co--environment education focus. Pretty even applications when considering outcomes, MPCs scores higher due to criteria.

Expansion of local native seed shouldn't be funded at all.

Bottom three no funding for sure.

MPCS_73_Open
Vistas

	1)Amount of Habitat	2)Local Support	3)Degree of Collaboration	4)Urgency	5)Multiple Benefits	6)Habitat Benefits	7)Sound Conservation Science	8)Adjacent to Protected Lands	9)Full Funding of Project	10)Supplants Existing Funding	11)Public Access for Hunting and Fishing	12)Sustainability	13)Use of Native Plant Materials	14)Budget and Cost Effectiveness	15)Capacity to Successfully Complete Work
	9.00	6.00	6.00	2.00	7.00	8.00	7.00	9.00	8.00	7.00	10.00	6.00	6.00	7.00	8.00
	10.00	8.00	9.00	9.00	8.00	9.00	10.00	9.00	8.00	8.00	10.00	9.00	8.00	10.00	9.00
	7.00	6.00	6.00	4.00	5.00	6.00	6.00	6.00	7.00	6.00	8.00	5.00	8.00	8.00	7.00
	8.00	7.00	8.00	4.00	5.00	5.00	6.00	3.00	8.00	7.00	10.00	4.00	5.00	5.00	5.00
	5.00	6.00	7.00	4.00	5.00	6.00	7.00	8.00	7.00	7.00	10.00	5.00	9.00	7.00	8.00
AVERAGES	7.80	6.60	7.20	4.60	6.00	6.80	7.20	7.00	7.60	7.00	9.60	5.80	7.20	7.40	7.40
TOTAL SCORE	135.80														

16)Supports Existing Landscape Level Plans	17)Supports Species Plans	18)Conforms to Statewide Conservation and Preservation Plan	19)Conforms to State Wildlife Action Plan
8.00	8.00	8.00	8.00
10.00	9.00	9.00	9.00
8.00	8.00	7.00	7.00
3.00	7.00	7.00	6.00
8.00	8.00	7.00	8.00
7.40	8.00	7.60	7.60
