

CPL Applications
(Total to date: 129)

Conservation Partners Legacy Grant Application

CPL1000094

Spreadsheet

Name and Contact

Project Identifier:	CPL1000094	Street Address 1:	2117 West River Rd
		Street Address 2:	
Project Name:	South Wirth Woodland Enhancement-Theo Wirth Regional Park	City:	Minneapolis
Organization Name:	Minneapolis Park and Recreation Board	State:	MN
		Zip Code:	55378
Organization Website:	www.minneapolisparks.org		
Organization Contact Person:	Andrea S. Weber		
Contact Email:	aweber@minneapolisparks.org		
Contact Phone:	612-230-6466		

Location

Primary County:	Hennepin
Nearest City:	Minneapolis
Township:	029
Project Site Name:	Theodore Wirth Regional Park
Project Site Land Ownership:	Local
Other Land Ownership:	

Project Information

Primary Activity:	Enhancement
Primary Habitat Type:	Forest
Total Project Acres:	125
Total Project Sites:	1
Total Grant Amount Requested:	\$400000
Total Match Amount:	\$40000
Total Project Cost:	\$440000
Project Completion Date:	11/2012 (MM/YYYY)

Project Summary and Outcomes: Enhancement of Southern Theodore Wirth Woodland. Enhancement activities include: closure of rogue and unsustainable trails, restoration and revegetation of those areas, erosion control focused on those areas, realignment of unsustainable trail segments, removal of segments of bituminous trails and replace with gravel trail, vegetation management including control of invasive species, and native plant restoration.

Attachments

- [Project Site Information Form](#)
- [Project Budget and Match Description](#)
- [Partner Commitment Letter](#)
- [Financial Documentation](#)
- [Conservation Easement](#)
- [Supplementary Attachment #1](#)
- [Supplementary Attachment #2](#)

[Back](#)

Conservation Partners Legacy Grant Program

Project Site Information

Contact information

Project name:	South Wirth Woodland Enhancement-Theodore Wirth Regional Park
Organization:	Minneapolis Park and Recreation Board (MPRB)
Organization contact person (Project Manager):	Andrea Salo Weber, R.L.A.

Project information

Project site:	Southern woodland area in Theo. Wirth Regional Park					
Project site land manager or easement holder:	MPRB	Legal :	T029	R24	S29	Q21
Private land owner (if applicable):	County:		Hennepin			

Activity (may choose more than one): Enhancement Restoration Acquisition
 Predominant Habitat (choose one): Forest Prairie Wetland Fish, Game and Wildlife Habitat
 Activity quantity: Acres Miles Feet Structures Wetlands

Project Site #2, if needed.

Project site:	n/a					
Project site land manager or easement holder:		Legal :	T	R	S	Q
Private land owner (if applicable):	County:					

Activity (may choose more than one): Enhancement Restoration Acquisition
 Predominant Habitat (choose one): Forest Prairie Wetland Fish, Game and Wildlife Habitat
 Activity quantity: Acres Miles Feet Structures Wetlands

Project Site #3, if needed. Use Additional Project Sites form if needed.

Project site:						
Project site land manager or easement holder:		Legal :	T	R	S	Q
Private land owner (if applicable):	County:					

Activity (may choose more than one): Enhancement Restoration Acquisition
 Predominant Habitat (choose one): Forest Prairie Wetland Fish, Game and Wildlife Habitat

Activity quantity: Acres Miles Feet Structures Wetlands

Project timeline:

Time frame	Goal	Time frame	Goal
winter 2009-10	hire consultant, develop construction/bid documents		
winter 2010	bid project		
spring-fall 2010	project construction		
spring-fall 2011	warranty and ongoing vegetation management		
spring-fall 2012	warranty and ongoing vegetation management		
fall 2012	final project closeout		

Project description and benefits (box will expand as typed into, not to be longer than 2 pages):

--Amount of Land: The South Wirth Woods Area of Theodore Wirth Regional Park is a 125 acre parcel near the middle of Hennepin County in the Cities of Golden Valley and Minneapolis. The project site is bounded by Glenwood Ave N on the north, Theodore Wirth Parkway on the west, I-394 on the south and Xerxes Ave N and adjoining residential and public institutional property on the east. The area encompasses Eloise Butler Wildflower Garden and Bird Sanctuary and acts as a buffer zone for the important native plant collections in the garden and it provides unique protected habitat for birds and wildlife. The South Wirth trails area inventory from 2005, found the following amounts of trails existing in the project area which are combination of paved, grass, and soft surface or dirt trails (Existing trail map is attached):

- Existing Trail per acre ratio (10.85mi:125ac)= 0.08 miles (458 l.f.) per acre
- Proposed Trail per acre ratio (6.56mi:125ac)= 0.05 miles (135.4 l.f.) per acre

--Local Support: A Community Advisory Committee process was initiated in 2005 to determine how to reduce the quantity of trails in the area. This committee consisted of members of the following local groups: Friends of the Wildflower Garden, The Nordic Ski Foundation, Minneapolis Off-Road Cycling Advocates (MOCA), Audubon Society, and Bryn Mawr Neighborhood Association. The outcome of the process was the South Wirth Woods Preferred Trail Overlay Plan (attached) which was approved by the MPRB Board of Commissioners on May 16, 2007. Both the Friends of the Wildflower Garden and Nordic Ski Foundation have written letters of support for this grant.

--Degree of collaboration: This project would be achieved with the work of a combination of programs and departments within MPRB and key user groups. The Friends of the Wildflower Garden and Nordic Ski Foundation would be involved in the planning and implementation of the project. Both of these groups already provide private funding for aspects of the park related to their interests. A large part of the grant match would use Teen Teamworks-green team, a summer youth employment program which focuses on environmental job skills training for inner city youth (this program is intended as a feeder for the MCC). MPRB Environmental Operations Staff would help coordinate this aspect of the project. MPRB Skilled trades and forestry would also participate where they could achieve cost savings doing so. MPRB Planning and Project Management would coordinate the overall project.

--Urgency: The Kestrel Management plan of Theo Wirth Park states; "a major restoration effort combined with closing and blocking of illegal trails could have significant impact for the large pieces of contiguous woodlands and savannahs." This is what this project would accomplish; a coordinated and comprehensive trail and habitat enhancement project. The need for this project has been documented and approved over nine years ago, but it has not yet been funded. Habitat restoration and trail closures are (unfortunately) not typically seen as a high priority and have to be fit within larger capital projects. But park districts typically don't seek funding to abandon facilities in order to benefit habitat. Staff and volunteers can accomplish only limited outcomes in an area of this size. Once excessive rogue trails are closed and revegetated and trails are upgraded to sustainable alignments, South Wirth will be more sustainable and maintainable moving into the future. MBRB staff, Friends of the Wildflower Garden and volunteers have made multiple efforts at invasive species management. While these projects do have an impact, the lack of a coordinated approach to management of the woodland diminishes their value to the ecosystem as a whole. Vegetation management can not be successfully completed without controlling erosion and reducing the excessive number of trails. This is the stumbling block which has yet to receive any funding. In addition, a desire of the CAC was to phase out bituminous paved trails in South Wirth. This project will introduce a more sustainable trail type- gravel, which is durable, has low environmental impact, is ADA accessible and has been used successfully in State Parks.

--Multiple Benefits: The project area for this grant project is unique in the nation and contains features not found elsewhere in an urban area. Eloise Butler Wildflower Garden, established in 1907 is the oldest wildflower garden in the nation. It contains rare native plants. The Board has long recognized this and has taken steps to protect and acknowledge this. The area around the garden was declared a bird sanctuary in 1935. In 1964 the garden and the 110 acres that surround it were officially declared a nature conservancy by the Board. Birds and native vegetation support each other. This grant application projects seeks to enhance the South Wirth Woods habitat for wildlife and native plants by:

- Closing undesirable trails. Trails would be reduced 40%. Selected closed trail ends would include signage about native vegetation restoration and/or erosion control and why they are important.

- Improving segments of remaining trails with sustainable and accessible materials and construction.
- Re-vegetating former trail alignments and stabilizing areas of erosion due to unsustainable trail use.
- Continue MPRB's efforts to remove invasive vegetation which has limited the woodlands ability to regenerate.
- Re-establish the rare oak woodland and oak openings/savannah habitat using appropriate native species.

--Habitat Benefits: "The number 1 and 2 causes of extirpation of plant and animal species worldwide are human disturbance and invasive species...both of these are present in Theodore Wirth Park." (Kestrel 2000). The MPRB had a comprehensive study made of Wirth Park in 2000, prepared by the Kestrel Group. The study reported that the woodland is not currently able to regenerate due to the impacts of invasive species, fire suppression and overuse. Oak openings are classified as a globally endangered ecosystem by the Nature Conservancy and Oak Savannah is one of the rarest ecosystems in Minnesota (MN Conservation Volunteer, Nov. 2010). Native oak acorns in South Wirth are not able to germinate due to the invasives shading and crowding them out. Several studies have shown that native birds are also more susceptible to predation when nesting in invasives like honeysuckle or buckthorn than in arrowwood or hawthorn (Kestrel 2000). Species confirmed in the project area include the following birds: Pileated woodpecker, Green heron, Scarlet tanager, Red-eyed vireo, Olive-sided flycatcher, Fox sparrow, Pine siskin, Hermit thrush, Broad-winged hawk; mammals – red fox, mink, woodchucks, a variety of bats, mice, voles, moles and muskrats, raccoons; reptiles & amphibians – painted & snapping turtles, Western chorus frog, Leopard frog, Wood frog, Gray tree frog, Cope's gray tree frog. Blandings turtles have been reported, but not confirmed by staff, in the Wirth Lake area, which is across Glenwood Ave.

--Consistency with Sound Conservation Science: The MPRB has done significant research and study of the existing conditions and desired outcomes for the enhancement of the South Wirth woodland. Our 400+ page Land Cover and Management Plan was completed in 200 by the Kestrel Group for Theo. Wirth Park and the Minnehaha Creek Corridor (available by request on our ftp site). In the plan, existing conditions, priorities, methods and goals were all established for the area. This project would be a major step in implementing this study. The project will use best practices for vegetation management and for trail design to ensure a more sustainable park into the future.

--Adjacent to protected lands: The South Wirth Woods area is within the 759 acre Theodore Wirth Regional Park. To the south, this area connects to the north end of the Chain of Lakes, Minnehaha Parkway and then to the Mississippi River. To the north, Wirth Park connects to Victory Memorial Parkway, then to Webber Park and then to North Mississippi Regional Park. All of these parks and parkways create a migratory route and connected tree canopy parallel to and connecting with the Mississippi River flyway on both the north and south.

--Full Funding of project: Re-vegetation and removal of invasive species is an ongoing effort which can not be "fully funded" in any one year. MPRB has done large woody invasive removals in most areas, but a few patches remain and continued removal of smaller sprouting invasives is proving to be as challenging if not more challenging. Funding for this project will provide the 'jump start' needed for the MPRB to keep up with a more sustainable maintenance regime until the seed bank in the woodland has been improved. Use of programs like Teen Teamworks and volunteer events will be an ongoing part of managing the area in conjunction with MPRB staff maintenance efforts.

--Supplements existing funding: (NOT SUPPLANTING) The trail closure and vegetation restoration piece is the major unfunded part of the South Wirth Woods trail plan. Until the trails and erosion are under control, vegetation management can never be completed. This part of the work is difficult to find funding for and though efforts have been ongoing within MPRB, the critical part of the project is not currently funded. MPRB has resources to continue to maintain the project area once the closures and restoration are complete.

Public access for fishing and hunting: Though hunting in urban parks is prohibited, fishing is allowed in Birch Pond (which was one of the first fish hatcheries established by the State Fish Commission in 1893), and Wirth Lake. Wirth Lake has a public boat launch and fishing dock which are well used by neighborhood residents. Wirth Lake is stocked with fish by the DNR as part of the FiN Program (Fishing in the Neighborhood).

--Sustainability: Sustainability is the main overall goal of this project. This land was acquired because of its beautiful topography and vegetation way back in 1889 and 1907. From the beginning, it was intended as a natural park. Today, the area is over-run with renegade trails which are causing erosion and fragmenting the habitat which decreases its

value to wildlife. Invasive species are preventing the ecosystem from regenerating. Bituminous trails, where they exist, are in very poor condition. Replacing them with pervious material will add to the sustainability of the project (though a few sections of paved trails around the edges of the area would remain).

The approved Trail Overlay Plan we would be implementing would reduce the linear feet of trails by 40%, which is quite significant and reduces the impervious area in the park. Existing trails will be modified to be more sustainable using best practices found in several resource guides including: USDA Trail Construction and Maintenance Notebook, 2004, Trail Solutions; IMBA's Guide to Building Sweet Singletrack, 2004 and the Trail Planning, Design, and Development Guidelines, by MN DNR, Trails & Waterways Division, 2007.

--Use of native plant materials: The pre-settlement vegetation in the area has been documented in a Land Cover Classification and Management Plan by the Kestrel Group in 2000 (attached). For restoration plant materials, all attempts to acquire the most appropriate species mixtures of local ecotypes will be made. The goal is to begin to restore the predominant mesic oak forest landcover. Sources such as Landscape Alternatives, Prairie Restorations, Prairie Moon, Hilde & Associates, Dragonfly Gardens and Outback Nursery and DNR Forestry Nursery are all potential sources for plant and seed material.

--Budget and cost effectiveness: The Statewide Conservation and Protection Plan (CPP) included a prioritization (Appendix VI) with relative costs of each action. The action of H7 has a low public cost and Medium private cost to implement. All other actions supported in the CPP are medium cost actions. The budget for this project, \$440,000 will provide significant and multiple benefits in a very valuable public land asset.

--Applicants Capacity to successfully complete work: The MPRB is fortunate to have in-house departments for Planning and Project Management, Environmental Operations, and Forestry. We have successfully managed many projects of this type and scale in the past. The partner area of study in the 2000 Kestrel report was the Minnehaha Creek Corridor. Much of the creek restoration is complete. Another recent area of restoration has been Lake of the Isles, which has received funding for the past several years to restore its shorelines and natural vegetation on the islands.

--Supports existing landscape level plans, Conforms to the state wildlife action plan (wildlife projects): This project is in the 222Mb-Big Woods Ecological Subsection of the state. The project is focused on enhancing a remaining oak forest/savannah landscape. This project is not linked specifically to any one species, however, the Kestrel Management Plan summarizes the large goal for this work, "unless removal of these invasives occurs, the oak canopy will thin and this will be the last generation of oaks on this land which has supported oaks for 5000 years." (p. 41). The Natural Heritage database indicates [REDACTED]. These species would not be anticipated to be impacted by the project, but staff working in the area would be informed of methods to minimize impact to any significant species, [REDACTED] Eloise Butler Wildflower Garden [REDACTED] inside the garden fence and just outside the fence [REDACTED] also found.

--Conforms to the Statewide Conservation and Preservation Plan (CPP):The CPP provides a strategic framework for prioritizing types of conservation activities. This project would advance several of these priorities in the categories of: Land and Water Restoration and Protection, and Sustainable Practices under both Broad and Targeted policy and Action Recommendations. The primary action of this project would be LU6 Reduce Upland and gully erosion through soil conservation practices. Erosion control and closing trails would both fit in this category. Another park of the project is under LU6 is the use of an innovative erosion control method which uses compost blanket and compost berms. Another significant action accomplished with this project would be in H7-Keep Water on the Landscape. This project would do this with the reduction of impervious trails and with the re-vegetation of eroded and invasive impaired areas and restoration of soils by aeration and use of compost and other erosion control practices. Another action which could loosely be applied to this project is LU10-Support and expand sustainable practices on working forested lands. Though the typical definition of "working forested lands" may be applied to logging operations, active recreational use is also a kind of a "working" use which has impact to the forest, but also offers great human benefits.

Please provide the answers to the following questions. Boxes will expand as typed into.

1. For lands acquired in fee title that will be turned over to a public agency for long-term management:

- a. Provide a description of the work necessary to bring the land up to agency standards and an estimate of the associated cost.

n/a

- b. What short- and long-term work is required to manage the land you acquire?

2. For enhancement/ restoration projects on public lands:

- a. Who is/will be the long-term manager for the project site?

Minneapolis Park and Recreation Board (MPRB)

- b. What short- and long-term maintenance work is required to sustain the habitat work you will do?

This project will help accomplish the erosion control, invasive removal and some new vegetation. The bid for the work will include invasive species, erosion control and vegetation maintenance contracts for short term maintenance for the first three years. MPRB has ongoing programs and staff to continue vegetation management and general maintenance which are long term commitments.

- c. Who will complete this maintenance work, and how will it be funded?

Short term maintenance would be funded through the grant as part of the miantenance and warranty of the project. MPRB maintenance staff and seasonal workers will continue with long term maintenance. This will be coordinated by District Maintenance and Environmental Operations staff through their respective budgets.

- d. Will the CPL funds supplant any existing funds?

CPL funding will not supplant existing funding, rather it will get the project area to a level which will be more sustainable in the long term for our current and projected staffing and funding levels. Current staffing does not have labor or funding for the trail closure, erosion control and invasive species control at this scale. We will continue smaller scale (Teen Teamworks) and volunter efforts to maintain the area once the project is complete.

As required by 2009 MN Session Law, Chapter 172 subd. 10 (8), “any agency or entity receiving an appropriation must, for any project funded in whole or in part with funds from the appropriation, give consideration to and **make timely written contact with the Minnesota Conservation Corps** for consideration of possible use of their services to contract for restoration and enhancement services”. Contact MCC at cplg@conservationcorps.org, or email a copy of this form to the same address. For more information on costs, crew capabilities, etc., visit MCC’s website at <http://www.conservationcorps.org/useacrew.html>.

Signature:

I certify that I have read the Conservation Partners Legacy Grants Program **Request for Proposal, Program Manual** and other program documents, and have discussed this project with the appropriate public land manager, or private landowner and easement holder. I am authorized to apply for and manage these grant and match funds, and the project work by the organization or agency listed below. I have made timely written notification to MCC regarding my restoration or enhancement project.

Signature: Andrea S Weber	Organization/ Agency: MPRB
Title: Landscape Architect, Project Manager	Date: 11-03-2009

Please save this document to your computer or electronic storage device and attach this document as specified on the online submittal form when ready to apply. Contact [CPL Grant Staff](#) with any questions.

Conservation Partners Legacy Grant Project Budget and Match Worksheet, Application Requirement

Project name:	South Wirth Woodland Enhancement-Theodore Wirth Regional Park	
Organization:	Minneapolis Park and Recreation Board	
Organization contact person (Project Manager):	Andrea S. Weber, ASLA	

Please complete all sections and be as detailed as possible for all descriptions under the Details sections. Limit entries in large tables to numbers only, **round to the nearest dollar**. Do not edit table categories, only enter values or text into the table. The tables will adjust to accommodate additional text in each box. If all categories are not needed, please leave those fields blank.

BUDGET: amounts being requested **Note: FY refers to State Fiscal Year: July 1- June 30, with the year reflecting the year that June falls in. For example: if today were September 3rd, 2009 it would be FY2010; December 3rd 2010= FY2011; May 2012= FY2012

Budget Item	Fiscal Year 2010	Fiscal Year 2011	Fiscal Year 2012	Total
Personnel				
Contracts	\$400,000.00			
Grant Administration				
Administration/ Environmental Compliance				
Fee Acquisition	\$0.00			
Easement Acquisition	\$0.00			
Easement Stewardship	\$0.00			
Equipment/Tools/Supplies				
Travel	\$0.00			
Additional Budget items				
Total				

DETAILS: detail the amounts listed in the above table.

Personnel Details:

Name	Title	Amount

Contract Details:

Contractor Name	Contracted Work	Amount
tbd	design bid documents, bidding and Construction Administration	\$67,000.00
tbd	Construction contract-bid	\$333,000.00
tbd		
tbd		

Grant Administration:

Administrative Activity	Description/ Amount	Amount

Administration/ Environmental Compliance

Activity	Description	Amount

Fee Acquisition/ Easement Acquisition/ Easement Stewardship Details:

n/a

Equipment/Tools/Supplies Details:

Item	Use	Amount

Travel Details:

Miles	Purpose	Amount

Additional Budget Items Details:

Engineers Estimate of project budget is attached to grant application.

MATCH: Required 10% of total project funds, to be fulfilled by end of Fiscal Year 2012. Use provided rate sheet to determine unit rate and total value of in-kind services to be used as matching funds if applicable.

Source	Description	Units	Unit Rate	Total Value
MPRB*2	Teen Teamworks crew 10 laborers-8 weeks (30 hrs/wk) -	2400	10	\$24,000.00
MPRB*2	Teen Teamworks supervisor-8 weeks, 30 hours	240	17	\$4,080.00
MPRB	MEO-Mech Equipment Operator- 40 hours-bobcat, brush hog and fence/sign install	40/50	51	\$2,040.00
"	Environmental operations-Coordination (MLP)	40	44	\$1,760.00
"	Environmental operations- Planning (Marcia)	20	48	\$960.00
"	Environmental operations- Natural Resources (coordination 2 volunteer site events)	20	44	\$880.00
"	Project Management-Landscape Architect consultant mgmt, bidding design and CA (ASW)	160	100	\$16,000.00
"	mileage-staff reimbursed or MPRB vehicles	720	0.50	\$360.00
"	Teen Teamworks Administration	50	41	\$2,050.00

Matching description/ comments: if needed

Additional Match Items (table does not expand):

MPRB Woodchips 200 CYx \$40=\$8,000

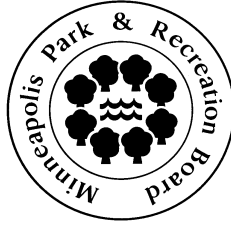
MPRB MEO-Mech Equipment Operator- 40 hours-bobcat, brush hog and fence/sign install
40hr x \$51=\$2,040

total matching in kind: (62,170 possible) \$40,000.00

1. Additional matching or substitute matching can be achieved with use of volunteer time and possible funding may be acquired from Friends of the Wildflower Garden and/or the Minneapolis Nordic Ski Foundation if needed to comply with requirements.

*2. Teen Teamworks match funding for this project would only use staff funded through the City Tax funded portion of the program (30% of the total program budget is city funded). Teen worker

rate=\$10.00, crew leader rate = \$17, Administration = \$50



TO: Full board

PREPARED BY: Andrea Weber, Project Manager

SUBJECT: Authorization to Apply for Two Lessard-Sams Outdoor Heritage Conservation Partners Legacy Grants

FULL BOARD ACTION DATE: August 21, 2009

ACTION:

THAT THE BOARD AUTHORIZE STAFF TO APPLY FOR A CONSERVATION PARTNERS LEGACY GRANT (A.K.A. LESSARD-SAMS OUTDOOR HERITAGE FUNDING) OF UP TO \$400,000 IN THE 'BACK 40' AND SOUTH WIRTH AREAS OF WIRTH PARK TO DO WOODLAND ENHANCEMENTS INCLUDING TRAIL CONSOLIDATIONS AND VEGTATION IMPROVEMENTS AND A SECOND GRANT FOR EROSION CONTROL AND BANK STABILIZATION ALONG SECTIONS OF TWIN LAKE AND BASSETT'S CREEK IN THEODORE WIRTH PARK

ACTION REQUESTED BY: Planning and Project Management Department

SUPERINTENDENTS RECOMMENDATION: Approval

1. Project Scope and History:

The Lessard Sams Outdoor Heritage Grant is a part of the 3/8% sales tax legislative amendment which was approved last fall by voters. This grant program is focused on habitat protection and improvements for fish and wildlife. In the various projects I have been involved with at Theodore Wirth Park, I have noted a few areas which would benefit from habitat restoration. In particular, erosion control along the east shore of Sweeney Lake and restoration of sections of Bassett's Creek east of the weir which passes under Hwy 55 and along the picnic area between Hwy 55 and Glenwood Avenue are needed. A second grant project would be to enhance the quality of the woodlands areas in the "Back 40" and in the South Wirth Areas. The South Wirth areas would begin to implement the approved South Wirth Trails Plan by closing and restoring areas where unauthorized trails have been established within the Eloise Butler Wildflower Garden buffer zone, which fragment and impair the quality of the larger woodland. Some protection of the buffer zone would also be considered. The back 40 woodland area project would also involve closing unauthorized trails and restoration of those areas. Both areas would include invasive species removal and new trail signage.

2. BUDGET:

The grants are available in amounts up to \$400,000 and require 10% matching funding. The matching funding can not be from other state funding sources but it can include, staff project time, or volunteer labor, etc.,. Staff have not yet determined the final budgets or in-kind

matching yet, but will comply with the grant rules and available resources in determining the grant funds requested.

3. RELEVANCE TO MPRB COMPREHENSIVE PLAN

Vision 1: Urban forests, natural areas and waters

Goal: Residents and visitors enjoy the natural environment.

4. REQUESTED ACTION: Authorize Planning and Project Management Staff to apply for the two proposed grants, manage the proposed projects and any funding that may be awarded.

South Wirth Woodland Estimates

November 3, 2009

	Estimated Quantity	Unit	Unit Cost	Total Cost
Mobilization (5%)	1.00	LS	5% of total	\$ 15,600.01
Bonding (2%)				\$ 6,240.01
Demo	1.00	LS	\$ 14,000.00	\$ 14,000.00
Removals 3" bit (9'wide 1LF=1sy)	9,185.00	SY	\$ 3.50	\$ 32,147.50
Invasive species control-Herbicide-hand spot spraying-woodland terrain	20.00	AC	\$ 750.00	\$ 15,000.00
Invasive species control-Herbicide-hand spot spraying-woodland terrain: 3 year warranty period	60.00	AC	\$ 750.00	\$ 45,000.00
Stump removals-portable grinder	20.00	EA	\$ 100.00	\$ 2,000.00
Grading-Common Excavation	100.00	CY	\$ 10.00	\$ 1,000.00
Soil aeration 25/day+51*8=433/day@ 2 acres/day=215/acre	12.00	AC	\$ 215.00	\$ 2,580.00
Erosion Control-Silt Fence-hand placed (1/8 Lf of removed trails)	1,755.00	LF	\$ 6.00	\$ 10,530.00
Erosion Control-Wood fiber blanket (0.125 ac)	600.00	SY	\$ 5.00	\$ 3,000.00
Erosion Control-Compost berm (1/8 of LF removed)	1,755.00	LF	\$ 10.00	\$ 17,550.00
Erosion Control-Compost blanket (1/2 acre, but diff condit)	2,420.00	SY	\$ 10.00	\$ 24,200.00
Erosion Control-Wood fiber log	1,755.00	LF	\$ 4.00	\$ 7,020.00
Temporary protection fencing w/ posts (at trail closure points Qty=100, 20 lf per closure) plastic or temp chain link	2,000.00	LF	\$ 5.00	\$ 10,000.00
Sign, Informational, Restoration "why"	25.00	EA	\$ 50.00	\$ 1,250.00
Sign, Construction Warning/Information	4.00	EA	\$ 350.00	\$ 1,400.00
Sign, trail arrow/directional (carsonite)	150.00	EA	\$ 40.00	\$ 6,000.00
Gravel Trails at 8' wide (3448 LF)	0.65	MILE	\$ 22,035.00	\$ 14,322.75
Dirt trail at 2' wide (20% realigned=2800)	2,800.00	LF	\$ 10.00	\$ 28,000.00
Woodchip trail 4' wide (10% realigned=2800)	1,400.00	LF	\$ 15.00	\$ 21,000.00
Forb plug planting (spot areas)	100.00	SY	\$ 80.00	\$ 8,000.00
Native seeding (est 1/2 acre)	0.50	AC	\$ 5,000.00	\$ 2,500.00
Native shrub #2	300.00	EA	\$ 40.00	\$ 12,000.00
Tree sapling (1.50/tree* 5 ac at 5' spacing*1750/acre)	5.00	AC	\$ 2,700.00	\$ 13,500.00
Split rail fencing material	2,000.00	LF	\$ 10.00	\$ 20,000.00
construction subtotal				\$ 312,000.25
Subtotal with Mobilization and Bonding				\$ 333,840.27
design-consult-20%				\$ 66,768.05
Contingency 10%				\$ 33,384.03
GRAND TOTAL				\$ 433,992.35

Minnesota Land Cover Classification Version 4.0

Theodore Wirth Park - Minneapolis, MN
Minneapolis Park & Recreation Board
June 2000

- 14112 - Pavement with 76-90% impervious cover
- 21111 - Spruce/fir trees on upland soils
- 21112 - White Pine trees on upland soils
- 21114 - Coniferous trees on upland soils
- 23111 - Short grasses with sparse tree cover on upland soils
- 23112 - Long grasses with sparse tree cover on upland soils
- 23211 - Short grasses on upland soils
- 31210 - Tamarack swamp
- 32112 - Oak forest mesic subtype
- 32170 - Boxelder-greenash disturbed native forest
- 32220 - Lowland hardwood forest
- 32321 - Mixed hardwood swamp seepage subtype
- 42110 - Oak woodland-brushland
- 52130 - Non-native dominated shrubland
- 52330 - Non-native dominated saturated shrubland
- 61110 - Mesic Prairie
- 61210 - Dry Prairie
- 61480 - Saturated non-native dominated graminoid vegetation
- 61530 - Seasonally flooded non-native dominated emergent vegetation
- 61610 - Cattail marsh
- 61620 - Mixed emergent marsh
- 91100 - Slow moving linear open water habitat
- 92000 - Lake (lacustrine)
- 93000 - Wetland-Open Water (palustrine)



0



0.5 Miles

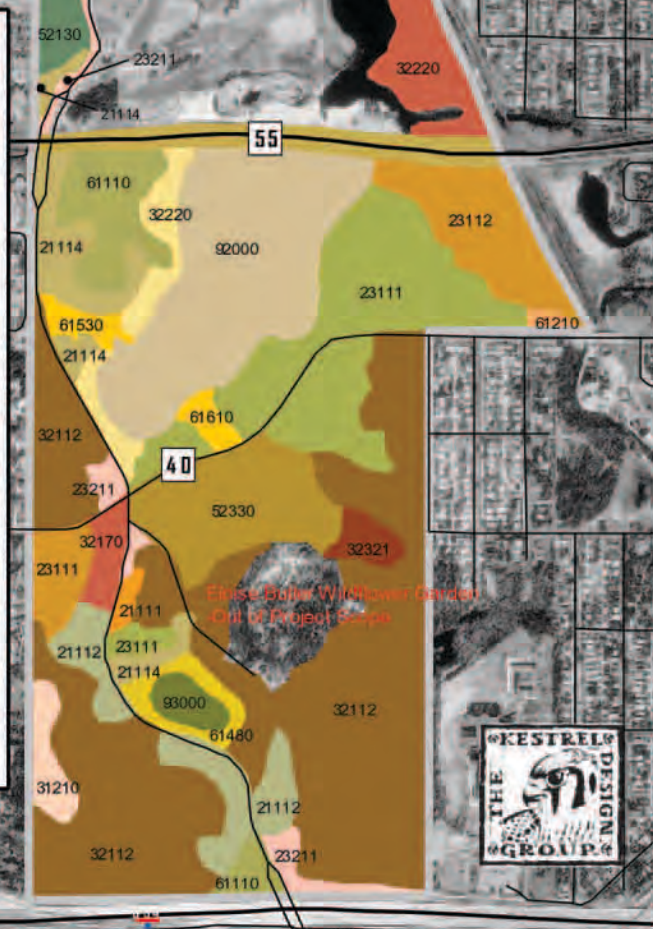


Figure III-14 Theodore Wirth Park MLCC -cropped image



Friends Of The Wild Flower Garden

To whom it may concern:

I am writing in support of the Minneapolis Park and Recreation Board's application for a Conservation Partners Legacy Grant for woodland enhancements and habitat restoration in Theodore Wirth Park. The Eloise Butler Wildflower Garden and Bird Sanctuary, situated in the southeastern area of Wirth Park, is a 102-year-old wild garden comprised of cultivated but naturalistic woodland, wetland, and prairie habitats. In addition to plants, more than 120 bird species including hawks, owls and warblers, a wide variety of mammals, and several species of frogs and toads make their home in the Garden. It is the oldest public wildflower garden in the United States, and is considered by many park users to be the gem of the nationally renowned Minneapolis park system.

Our organization, the Friends of the Wild Flower Garden, is a group of private citizens who provide volunteer services, substantial funding, and community advocacy in service to the Garden and its visitors. We have proudly partnered with the MPRB in our commitment to the Garden since our founding in 1952. The Friends believe that the Garden is a vital preserve for native flora and fauna of Minnesota, as well as a uniquely accessible nature education resource for people of all ages.

The 15-acre fenced Garden is carefully maintained by MPRB staff who oversee native plantings of wildflowers, woody plants, trees and shrubs, and aggressively remove all invasive species. The immediate buffer zone is also monitored for invasives by staff and volunteers, but the surrounding acreage of South Wirth is highly degraded by buckthorn, garlic mustard, excessive erosion and renegade trails. Beginning in 2005, the Friends participated in a multi-group committee led by MPRB staff, to propose guidelines for the South Wirth Woods Trail Overlay Concept, a schematic design for this area focused on enhancement of ecological integrity and fundamental habitat restoration. The Park Board approved the design in the spring of 2007.

The Friends of the Wild Flower Garden seek to continue our long and active history of protecting the Garden, its buffer zone, and all of South Wirth. In conjunction with our preservation priorities and commitment to securing the Garden as a community treasure, we wholeheartedly support the current endeavor to secure funds for restoration of this area.

Sincerely,

J. Pamela Weiner
President, Board of Directors
Friends of the Wild Flower Garden

A support group for The Eloise Butler Wildflower Garden and Bird Sanctuary



CITY OF LAKES

FOUNDATION

October 30, 2009

Ms. Andrea Weber
2117 West River Parkway
Minneapolis, MN 55411

Dear Ms. Weber:

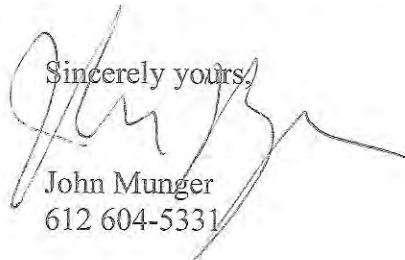
I understand that you are applying for a grant with the idea of realizing the vision of the South Wirth Area (the area bounded by Wirth Parkway on the west, Interstate 394 on the south, Glenwood Avenue on the north and Bryn Mawr neighborhood on the east).

As the executive director of the City of Lakes Nordic Ski Foundation, this is to express the Foundation's support for the grant. Led by the Park Board, the Nordic Ski Foundation participated in a series of a meetings designed to reach consensus in this area. The Trail Overlay Plan resulted. We appreciate the Park Board's willingness to follow through on these plans.

In particular, eliminating some of the spider web of unsustainable trails, removing the older asphalt and replacing it with woodchips or grass, and eradicating buckthorn are all worthy goals that will help this area achieve the heights it has had in the past.

Please let me know if there is anything else I can do on this project.

Sincerely yours,



John Munger
612 604-5331