

**CPL Applications**  
(Total to date: 129)

## Conservation Partners Legacy Grant Application

**CPL1000053**

Spreadsheet

### Name and Contact

Project Identifier:	CPL1000053	Street Address 1:	32809 County Road 326
Project Name:	WCOLA Fish and Wildlife Habitat Stabilization Project	Street Address 2:	
Organization Name:	Wabana Chain of Lakes Association	City:	Bovey
Organization Website:	http://www.wcola.org/	State:	MN
Organization Contact Person:	John W. Zimmerman, Jr.	Zip Code:	55709
Contact Email:	jwzimmerjr@gmail.com		
Contact Phone:	218-327-3188		

### Location

Primary County:	Itasca
Nearest City:	Bovey
Township:	Wabana and Balsam
Project Site Name:	Wabana Chain of Lakes
Project Site Land Ownership:	State
Other Land Ownership:	None

### Project Information

Primary Activity:	Restoration
Primary Habitat Type:	Fish, Game or Wildlife Habitat
Total Project Acres:	4385
Total Project Sites:	1
Total Grant Amount Requested:	\$15982
Total Match Amount:	\$3338
Total Project Cost:	\$19320
Project Completion Date:	12/2011 (MM/YYYY)

Project Summary and Outcomes: WCOLA has a 30 year history of influencing human development impact on lakes. Projects have included septic improvement, shoreline restoration, erosion control. Due to recent severe fish and wildlife habitat degradation measured by the DNR, we will collect samples across 10 basins on four connected lakes. Two sets of tests-one by cert. prof. in center of 10 basins-done to meet MPCA requirements-one by WCOLA volunteers at shoreline to address high pollution sources (dust suppression chemicals, road salt, bacteria). Sampling across 2 yrs with action plans built at end of each year to prioritize fish and wildlife restoration activities. Community outreach, DNR coordination.

---

### Attachments

- [Project Site Information Form](#)
- [Project Budget and Match Description](#)
- [Partner Commitment Letter](#)
- [Financial Documentation](#)
- [Conservation Easement](#)
- [Supplementary Attachment #1](#)
- [Supplementary Attachment #2](#)

---

[Back](#)

# Conservation Partners Legacy Grant Program

## Project Site Information

**Contact information**

Project name:	Wabana Chain of Lakes Association Fish and Wildlife Habitat Stabilization Project			
Organization:	Wabana Chain of Lakes Association			
Organization contact person (Project Manager):	John W. Zimmerman Jr.			

**Project information**

Project site:	Wabana Chain of Lakes (Trout, Little Trout, Wabana & Bluewater)					
Project site land manager or easement holder:	Chris Kavanaugh	Legal :	T57N	R25W	S8	Q
Private land owner (if applicable):	NA	County:	Itasca			

Activity (may choose more than one):  Enhancement  Restoration  Acquisition  
 Predominant Habitat (choose one):  Forest  Prairie  Wetland  Fish, Game and Wildlife Habitat  
 Activity quantity:   Acres  Miles  Feet  Structures  Wetlands

Project Site #2, if needed.

Project site:						
Project site land manager or easement holder:		Legal :	T	R	S	Q
Private land owner (if applicable):		County:				

Activity (may choose more than one):  Enhancement  Restoration  Acquisition  
 Predominant Habitat (choose one):  Forest  Prairie  Wetland  Fish, Game and Wildlife Habitat  
 Activity quantity:   Acres  Miles  Feet  Structures  Wetlands

Project Site #3, if needed. Use Additional Project Sites form if needed.

Project site:						
Project site land manager or easement holder:		Legal :	T	R	S	Q
Private land owner (if applicable):		County:				

Activity (may choose more than one):  Enhancement  Restoration  Acquisition  
 Predominant Habitat (choose one):  Forest  Prairie  Wetland  Fish, Game and Wildlife Habitat

Activity quantity:   Acres  Miles  Feet  Structures  Wetlands

**Project timeline:**

Time frame	Goal	Time frame	Goal
2Q 2010	<p>Authorize Itasca Community College to schedule and implement testing project</p> <p>Purchase insurance coverage - contingent upon grant approval</p> <p>Meet with DNR land manager - Chris Kavanaugh - to review approved work plan and keep him connected to status - review environmental impact elements if any</p>	2-3 Q 2010	<p>Perform deepwater testing - 5 Sample sets @ each of 10 fixed by GPS locations - 1 for each unique basin in the 4 lakes making up the "Chain of Lakes" (Trout, Little Trout, Wabana &amp; Bluewater)</p> <p>Perform shoreline testing - 1 site in each basin (total of 10) 3 times as plan specifies</p>
4 Q 2010	<p>Summarize data collected - prepare interrim report to WCOLA members as well as DNR for 1st year grant closure</p> <p>Meet with DNR land manager Chris Kavanaugh to share interim data and get his input if any for next step - building action plan</p>	4Q 2010 to 2Q 2011	<p>Build WCOLA Action plan to begin to address findings from the first year of data. This builds on the less formal data we have collected over the last decade and will likely include continued septic tank outreach in community, as well as accelerated shore restoration projects and invasive species inspections and community education</p>
2-3 Q 2011	<p>Perform deepwater testing - 5 Sample sets @ each of 10 fixed by GPS locations - 1 for each unique basin in the 4 lakes making up the "Chain of Lakes" (Trout, Little Trout, Wabana &amp; Bluewater)</p> <p>Perform shoreline testing - 1 site in each basin (total of 10) 3 times as plan specifies</p>	4 Q 2011	<p>Summarize data collected - prepare final report to WCOLA members as well as DNR for grant completion status</p> <p>Meet with DNR land manager Chris Kavanaugh to share 2nd year data and get his input if any for next step - building action plan</p>

4Q 2011 to 2Q 2012	Assess success of first WCOLA action plan - Utilizing this assessment and the 2nd year of lake sample data - Build WCOLA Action plan to address findings from both years of data. As in the interrim plan, this will build on the less formal data we have collected over the last decade and will allow us to better focus our efforts and limited resources between activities such as continued septic tank outreach in community, as well as accelorated shore restoration projects and invasive species inspections and community education		

**Project description and benefits (box will expand as typed into, not to be longer than 2 pages):**

The Wabana Chain of Lakes Association (WCOLA), a community based volunteer 501c3 has been actively managing human impact on these lakes (Trout, Wabana, Little Trout & Bluewater) since the 1980's. We focus on water quality with projects encouraging resident action in improving septic systems, restoring shoreline, conservation easements, repairing & preventing erosion, low water impact product substitution, invasive species education & prevention, secchi disk readings and water sampling. This "WCOLA Fish and Wildlife Habitat Stabilization Project" – builds on past activity and fits nicely with Itasca Co. Water Mgmt Plan and the Fish & Wildlife Long Range Plan for Fisheries Mgmt. The successful outcome of this project will be: 1) formal Minnesota Pollution Control Agency (MPCA) data for the 10 (4358 Acres) basins which make up these four lakes, 2) prioritized assessment of the challenges to the water quality affecting fish and wildlife habitat, 3) assessment of WCOLA's impact on human development, 4) formal action plan to focus ongoing fish and wildlife habitat stabilization. This urgent request is being made in light of recent evidence of serious degradation of the fish and wildlife habitat in these lakes requiring resources that we do not have. The bright blue colors of two of the lakes-Trout & Bluewater-have become less bright blue. These are "marl" lakes, and owe their unusual blue color to crystals of calcium carbonate suspended in the water. This is a highly sensitive condition and affected by the addition of nitrogen and/or phosphorus to the lakes. Our testing in conjunction with the MPCA (1991 & 2000) has shown rising nutrient concentrations. What makes this funding appeal urgent is during the summer of 2009-the DNR tested Trout Lake to find that at lower levels there was surprisingly little or no oxygen. DNR also collected Lake Trout and the results were drastically reduced from prior period tests-they caught 2 Lake Trout in total, both small, one dying. Native Lake Trout and younger Lake Trout stocked by the DNR have been healthy and the source of fishing enjoyment on this lake since earliest records. This is the first sign of real trouble in these lakes ability to provide habitat for fish and the wildlife that are dependent upon it. Trout's waters flow into the other 3 lakes. For these reasons we are seeking grants to leverage our associations funding to formally benchmark and then build a 4 lake action plan to focus the multiuse community on Fish and Wildlife Habitat Stabilization & Restoration.

WHY A CPL GRANT?: WCOLA believes our grant objectives fit those of the Minnesota Legislature. CHAPTER 172--H.F.No. 1231 states: "An act...appropriating money...and providing for policy and governance of outdoor heritage, CLEAN WATER, parks and trails, and arts and cultural heritage purposes." Subd. 5 entitled "FISH, Game, and Wildlife Habitat" - establishes the CPL grants program – which while focused mostly on acquisition and easement establishment – with a land bias vs water – does allow "...for enhancement, restoration, or protection of ...HABITAT FOR FISH, game, or wildlife". As no other section of the sales tax set aside in Chapter 172 makes allowance for 501c3 grants our association believes that this funding was meant to include the public's access to matching funds to ensure that Minnesotans are supported in their acts to maintain clean water as one of the basis for the states excellent FISH and wildlife habitats. This agrees with the Key Messages of the CPLG which states "Ensuring that FISH and wildlife habitat is protected so that future generations have the same opportunities as previous generations to experience quality outdoor recreation is an important goal of this grant program." Additionally, the law sets a condition requiring the "...commissioner shall report on the feasibility...for creation of a Minnesota fish and wildlife foundation...modeled after the National Fish and Wildlife Foundation" and it should be noted that the NFWF asserts they "WORK AT THE LOCAL LEVEL TO ADDRESS THE ROOT CAUSES OF HABITAT LOSS AND SPECIES DECLINE." The NFWF's grant library is full of grants focused on 1)water sample collecting to establish directional quality of fish and wildlife habitat; 2)raising public awareness of understanding human actions on water quality and the effects on fish and wildlife habitat, 3)training of citizens to collect water samples; 4) support to organizations to build action and master plans for fish and wildlife habitat restoration, enhancement and protection based on certified water quality baseline data.

SAMPLING/TESTING SPECIFICS & ACTION PLANS: We initiate two related sets of sampling / testing and build action plans based on the results. The 4 lakes are made up of 10 unique basins. TEST SET 1 (near center of basins-fixed by GPS) water samples are collected and analyzed by certified ICC Water Lab techs to comport with MPCA requirements. Sampling at 10 locations, 5 times/year for 2 years or 100 samples. MPCA's highest priority observations include Total Phosphorus (major nutrient causing eutrophication), Chlorophyll a (algae growth indicator), Total Nitrogen (second nutrient indicator) & Secchi disk readings. In addition, while these analytes are measured as upper mixed zone samples-Oxygen depletion measurements (to address DNR findings in Trout Lake) require water-column profiles at deep lake levels. TEST SET 2 (near shore) samples by trained WCOLA volunteers and tested by certified ICC Water Lab techs. Shoreline testing is a leading indicator of lake health. Shoreline development decreases fish and wildlife habitat and

sustainable use for recreation. Often water quality measurements in the middle of lakes miss big changes that occur first around shores. Shoreline monitoring shows impact of the WCOLA's community activities (septic enhancement, shoreline restoration, erosion control etc.) 1 sample/basin – 10 basins – 3 times/year for 2 years or 60 samples. Specific locations were selected to address resident use of dust suppression sprays on drives, frequent salt applications for road ice control, and high body contact recreation areas where the presence of bacteria makes use dangerous. ACTION PLANS developed in 2010 and 2011 and built on data collected with DNR, member and community input. These plans drive the activities of the active WCOLA members in maintaining the Wabana Chain of Lakes Fish and Wildlife Habitat.

PROJECT BENEFITS: First, verify and then determine cause of the oxygen results and the Lake Trout kill off - drive stabilization efforts. Second, other fish and wildlife are also affected by water quality degradation - the action plans built will help WCOLA help ensure we provide suitable habitat for the fish and wildlife and ensure enjoyment by property owners and visitors to the State parks, Federal parks and public landings surrounding us. Third, provide WCOLA with metrics of our works impact and focus/prioritize our habitat sustainment/restoration actions going forward. Fourth - establish formal MPCA level benchmark/baseline data. Finally, since we publish our action plans and data, members, resident non members, DNR, Itasca Co. Waters staff will benefit thru the public education and WCOLA outreach.

RESPONSIVENESS TO GRANT SCORING CRITERIA: Most will be obvious by the above, however to ensure evaluators see direct connections WCOLA provides the following to show how our proposal ties directly to what the Minnesota Legislature intended. PROGRAM PRIORITY: Restore: action to bring a habitat back to a former state of sustaining fish and wildlife - data set 1 and resulting action plans will focus on understanding the decline of the trout population and focus actions on restoring lakes ability to support Lake Trout, Data set two will clearly identify trouble areas adjacent to shoreline and become the basis of the many other activities the WCOLA is actively engaged in on these four lakes. ACTIVITY: WCOLA will impact Lake Habitat Development, Shoreline and Streambank Work & Warmwater Lake Spawning Development. AMOUNT OF HABITAT RESTORED – the lakes total 4385 acres and approximately 50 miles of shoreline. LOCAL SUPPORT – WCOLA is 120 active member families working closely with Itasca Waters Legacy Program, peer lake associations and the DNR. The certified lab is part of Itasca Community College and is staffed with students in their course of study as well as professionals. URGENCY: Protection and restoration of fish and wildlife habitat is always urgent – we consider this significantly more so due to the 2009 DNR Lake Trout tests. MULTIPLE BENEFITS: In addition to the Lake Trout objective, other species are suffering due to the lack of oxygen and the water quality impacts which also directly affect the wildlife living in the protected semi-primitive, non-motorized Chippewa National Forest including nesting bald eagles, grey wolf, bear, deer and many smaller mammals that are significantly dependent upon the water quality of the lakes and the fish in them. The many resorts whose livelihood is dependent upon the quality of the fish and wildlife habitat. The very diverse littoral zone plant and invertebrate presence on these lakes. All will benefit from Wabana Chain of Lakes Stabilization Project if this grant is approved. SOUND CONSERVATION SCIENCE: - The ICC lab is certified, lead by a professional limnologist. It was established by a second limnologist, Dr. John Downing. John's family lives on Wabana and are active members WCOLA. John's expertise will be available to support the project team. For more on Dr. Downing please see: <http://www.public.iastate.edu/~downing/JADCV.pdf>. ADJACENT TO PROTECTED LANDS: These lakes are surrounded by conservation easements, state lands, national park/forest as well as private residences - much of the area is open to hunting and all the lakes are accessible. APPLICANTS CAPACITY TO SUCCESSFULLY COMPLETE: We have excellent volunteers, are using a certified lab, and have a well recognized limnologist on our team. Successfully completed WCOLA projects are documented on our website. SUPPORT EXISTING LANDSCAPE LEVEL PLANS: Our project supports the Itasca Co. Water Mgmt. Plan which states: "...Water quality monitoring has been a primary focus of the Itasca Co. Water Plan since its beginning." Amongst the plans priority concerns are: "Surface Water Quality - Update and expand data collection and monitoring; Identify...sources of pollution from existing and future projects; coordinate and promote the Citizens Lake Monitoring Program; Land Use and Development - promote mitigation for improved water quality; Septic Systems - Encourage inspections, awareness, and education; Fish and Wildlife Habitat - Promote the importance and value, Increase monitoring; Promote riparian buffer zones; Education. SUPPORTS SPECIES PLANS: The DNR stocked Lake Trout (1999, 2001, 2003, 2005 & 2007) and monitor their health - WCOLA well tied to this plan. The Trout and Salmon Stamp program speaks to its importance. CONFORMS TO THE STATEWIDE CONSERVATION AND PRESERVATION PLAN: Fish and Wildlife Long Range Plan for Fisheries gives its purpose as "...to conserve and manage Minnesota's aquatic resources and associated fish communities." Its first core function is: "Conduct Fisheries Monitoring..." and its second is to: "Conserve, Improve, and Restore Fish Populations and Aquatic Habitat." CONFORMS TO THE STATE WILDLIFE ACTION PLAN: Secondary impact on populations on list including nesting pairs of Bald Eagles, Common Loons, and grey wolf. All are partially dependent upon our lakes for their habitat.

Please provide the answers to the following questions. Boxes will expand as typed into.

**1. For lands acquired in fee title that will be turned over to a public agency for long-term management:**

- a. Provide a description of the work necessary to bring the land up to agency standards and an estimate of the associated cost.

NA - This work is done on waters already publically owned.

- b. What short- and long-term work is required to manage the land you acquire?

NA - This work is done on waters already publically owned.

**2. For enhancement/ restoration projects on public lands:**

- a. Who is/will be the long-term manager for the project site?

As this work is done on waters already belonging to the public - this grant proposal doesn't change that. The WCOLA project manager is John W. Zimmerman Jr. and the action plan development and implementation will be the responsibility of the Wabana Chain Of Lakes Associations.

- b. What short- and long-term maintenance work is required to sustain the habitat work you will do?

Testing to benchmark against this established baseline - and our historical data will continue to be necessary as human development continues in contact with the fish and wildlife habitat that make up the Wabana Chain of Lakes and surrounding landscape features.

- c. Who will complete this maintenance work, and how will it be funded?

WCOLA has raised funds thru membership and by partnering with other organizations in the past to do more modest samplings and testings. We will continue to fund periodic testing in the future to compare to this baseline and will fund it through our membership support, partner relationships, other sources of grant monies.

- d. Will the CPL funds supplant any existing funds?

No

As required by 2009 MN Session Law, Chapter 172 subd. 10 (8), “any agency or entity receiving an appropriation must, for any project funded in whole or in part with funds from the appropriation, give consideration to and **make timely written contact with the Minnesota Conservation Corps** for consideration of possible use of their services to contract for restoration and enhancement services”. Contact MCC at [cplg@conservationcorps.org](mailto:cplg@conservationcorps.org), or email a copy of this form to the same address. For more information on costs, crew capabilities, etc., visit MCC’s website at <http://www.conservationcorps.org/useacrew.html>.

**Signature:**

I certify that I have read the Conservation Partners Legacy Grants Program **Request for Proposal, Program Manual** and other program documents, and have discussed this project with the appropriate public land manager, or private landowner and easement holder. I am authorized to apply for and manage these grant and match funds, and the project work by the organization or agency listed below. I have made timely written notification to MCC regarding my restoration or enhancement project.

Signature: John W. Zimmerman Jr.	Organization/ Agency: WCOLA
Title: Project Manager, WCOLA	Date: November 2, 2009

**Please save this document to your computer or electronic storage device and attach this document as specified on the online submittal form when ready to apply. Contact [CPL Grant Staff](#) with any questions.**



## CPL Project Application Review and Approval Form

**REVIEWER INFORMATION**

Land manager/ easement holder name:	Chris Kavanaugh		
Title:	Area Fisheries Supervisor	Date of meeting:	October 30, 2009
Phone:	218-999-7821	Proposal ID #:	
Email:	chris.kavanaugh@state.mn.us	(assigned by agency, optional )	

**PROJECT INFORMATION:**

Project Name:	Wabana Chain of Lakes Association Fish and Wildlife Habitat Stabilization Project	Organization:	Wabana Chain of Lakes Association
Contact Person:	John Zimmerman 32809 County Rd 326 Bovey, MN 55709		John Zimmerman 32809 County Rd 326 Bovey, MN 55709
Email:	wzimmerjr@gmail.com	Daytime Phone:	218-327-3188

Please check the appropriate boxes:

- I have read the application and discussed this proposed project with the above listed Organization Contact Person.
- For work on easements, the private landowner has been contacted and has given support and approval for this project.

**I have performed a Natural Heritage Database review and found:**

- this project to have no features within one mile.
- this project to have features within one mile, but project is not likely to adversely affect those features. I have recommended the following minimization strategy:

The project was discussed with Rian Reed and since the project involves collecting water samples from each of the basins throughout the year there will be no adverse affects on any feature. The samples will be collected away from shore which will further minimize the likelihood of any adverse affects.

- this project is likely to adversely affect Natural Heritage features. I feel that this project is important and should be forwarded to DNR Ecological Resources staff for further review.
- I do not have access to the Natural Features database and will forward this completed form to DNR within 3 business days to [CPL Staff at LSCPLGrants.DNR@dnr.state.mn.us](mailto:CPLStaff@LSCPLGrants.DNR@dnr.state.mn.us) for review.

I have discussed what role my office will be expected to have in this project and find that the project, as described will require:

- minimal or no involvement from my office for completion.

- a commitment of involvement by staff that is reasonable and can be accomplished with current staffing levels and workload.
- an amount of staff involvement that cannot be committed during the project time period with current staffing levels. Unless additional staffing can be committed from other offices, Divisions or appropriate partners, I feel this project cannot be completed within the project timeline to our desired standards.

## CPL Project Application Review and Approval Form

---

I have discussed permits and applications that the applicant may be responsible for using the Working on DNR Lands and Working on Public Lands, or Working on Private Lands documents.

**Upon final review of this project:**

- I find this project to be consistent with sound conservation science. This work will benefit area fish, game and wildlife by restoring, enhancing or protecting forests, wetlands, prairies and habitat and is consistent with the management or stewardship plan for this land. (APPROVAL)
- I find that this project does not follow the management or stewardship plan for this land and does not fit within the long range goals for this land at this time on the local level. (DECLINE)
- I find that this project should be sent up to a higher level within the agency for further review and decision. I have forwarded the Project Planning Form and this Review and Approval Form for further review to:

Name:		Phone:	
-------	--	--------	--

**By checking this box and typing my name below I certify that I have met with the above applicant and discussed the proposed project and have provided feedback to the applicant.**

Name:	Chris Kavanaugh
-------	-----------------

Comments: **This project will provide valuable information on water quality trends and identify emerging issues for early detection and remediation to preserve the excellent resource values found in the chain of lakes. The sponsor has considerable experience in water quality data collection and the project will not result in additional workload for Area Fisheries Staff.**

Name:	Chris Kavanaugh	Phone:	(218) 999-7821
Title:	Area Fisheries Supervisor	Email:	chris.kavanaugh@state.mn.us

Additional  
necessary):

Comments( including approval or denial, reasoning):  
**I recommend approval of this project.**

review (if

## Conservation Partners Legacy Grant Project Budget and Match Worksheet, Application Requirement

Project name:	Wabana Chain of Lakes Association Fish and Wildlife Habitat Stabilization Project	
Organization:	Wabana Chain of Lakes Association	
Organization contact person (Project Manager):	John W. Zimmerman Jr.	

Please complete all sections and be as detailed as possible for all descriptions under the Details sections. Limit entries in large tables to numbers only, **round to the nearest dollar**. Do not edit table categories, only enter values or text into the table. The tables will adjust to accommodate additional text in each box. If all categories are not needed, please leave those fields blank.

**BUDGET:** amounts being requested

Budget Item	Fiscal Year 2010	Fiscal Year 2011	Fiscal Year 2012	Total
Personnel	\$0.00	\$0.00	\$0.00	\$0.00
Contracts	\$7,605.00	\$7,445.00	\$0.00	\$15,050.00
Grant Administration	\$0.00	\$0.00	\$0.00	\$0.00
Administration/ Environmental Compliance	\$301.00	\$301.00	\$0.00	\$602.00
Fee Acquisition	\$0.00	\$0.00	\$0.00	\$0.00
Easement Acquisition	\$0.00	\$0.00	\$0.00	\$0.00
Easement Stewardship	\$0.00	\$0.00	\$0.00	\$0.00
Equipment/Tools/Supplies	\$0.00	\$0.00	\$0.00	\$0.00
Travel	\$165.00	\$165.00	\$0.00	\$330.00
Additional Budget items				
<b>Total</b>	<b>\$8,071.00</b>	<b>\$7,911.00</b>	<b>\$0.00</b>	<b>\$15,982.00</b>

**DETAILS:** detail the amounts listed in the above table.

**Personnel Details:**

Name	Title	Amount

**Contract Details:**

Contractor Name	Contracted Work	Amount
Itasca Community College - Water Quality Lab	Physically take water samples on location utilizing certified equipment and personnel- 10 locations, 5 times in each of 2 years = 100 sample collections. (1/2 each year)	\$7,940.00

Itasca Community College - Water Quality Lab	Test Water Samples and provide results to WCOLA multiple tests on 100 samples (1/2 each year)	\$5,900.00
Itasca Community College - Water Quality Lab	Run training session by certified personnel for volunteers doing the shoreline sampling as part of 10% organization match = one session in the first year	\$160.00
Itasca Community College - Water Quality Lab	Test shore line water samples collected by volunteers one test on 90 samples (1/2 each year)	\$1,050.00

**Grant Administration:**

Administrative Activity	Description/ Amount	Amount
See Matching Activity		

**Administration/ Environmental Compliance**

Activity	Description	Amount
Meet with DNR contact	While we are simply collecting samples - and believe that there will be no environmental impact - our action plan will include items like shoreline restoration, erosion prevention and restoration, septic tank improvements and these items must be reviewed for impact - so we proposed 4% of our total budget expense to cover the time of the DNR contact - Chris Kavanaugh	\$602.00

**Fee Acquisition/ Easement Acquisition/ Easement Stewardship Details:**

--

**Equipment/Tools/Supplies Details:**

Item	Use	Amount

**Travel Details:**

Miles	Purpose	Amount
600	ICC Lab field rep travel to the 4 lakes - and back 10 times - approximately 60 miles round trip is 600 miles at \$.55/mile	\$330.00

**Additional Budget Items Details:**

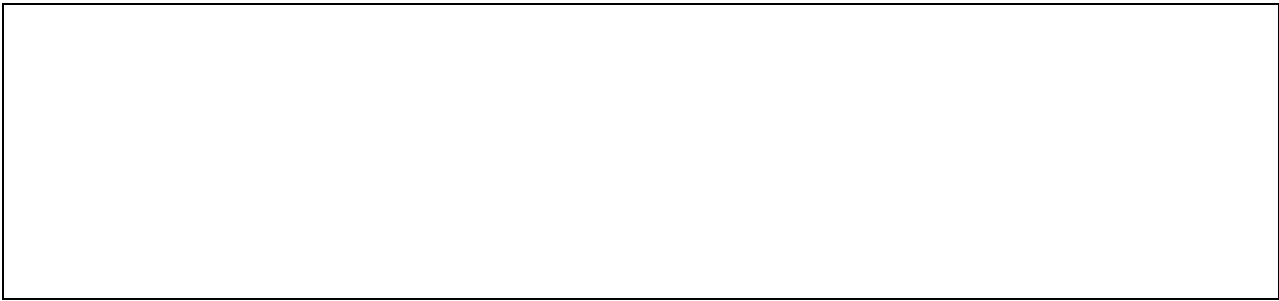
--

**MATCH:** Required 10% of total project funds, to be fulfilled by end of Fiscal Year 2012. Use provided rate sheet to determine unit rate and total value of in-kind services to be used as matching funds if applicable.

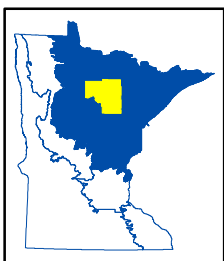
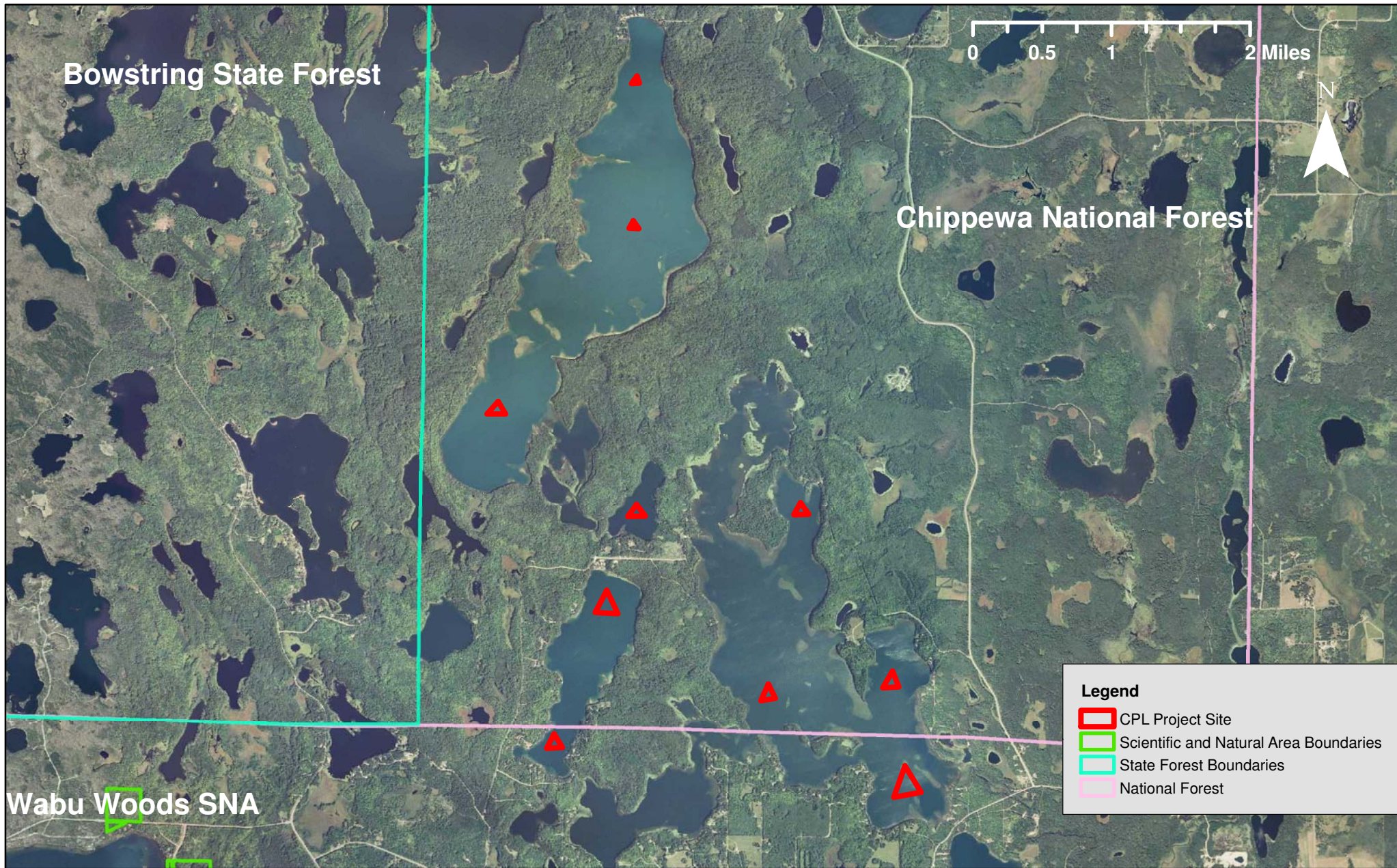
Source	Description	Units	Unit Rate	Total Value
WCOLA (Wabana Chain of Lakes Association)	Project manager - Lab interface, data organization, prepare reports for WCOLA members, public and Grant Supervisors (20 hours at \$15 / hour = \$300) this is the admin oversite rate in DNR in kind rate sheet guidanc	20	15	\$300.00
WCOLA (Wabana Chain of Lakes Association)	Data analysis and making data understandable to lay members of the public (40 hours at \$15/hr=\$600) this is the admin oversite rate in DNR in kind rate sheet guidance - and is likely understated as this requires specialized advanced training and will be overseen by our limnologist volunteer member - Dr. John Downing.	40	15	\$600.00
WCOLA (Wabana Chain of Lakes Association)	Board members and specialized skilled members developing WCOLA and community action plans (10 members at 6 hours each - ie two meetings at \$13/hour = \$780 at the general labor rate	60	13	\$780.00
WCOLA (Wabana	Program Manager - 20 hours at \$15/hour to	20	15	\$300.00

Chain of Lakes Association)	write two action plans which result from sessions = \$300 (we used the admin oversight rate for action plan writer as these seemed most appropriate from those available)			
WCOLA (Wabana Chain of Lakes Association)	Special Newsletter issue printed and mailed to Members - posting to public on website (250 copies printed at \$1 plus \$.44 postage = \$360)  Newsletter prep - write, address & stamp (20 hours at \$11/hr = \$220) we used the grant administration and computer use rate			\$580.00
WCOLA (Wabana Chain of Lakes Association)	Volunteers to collect shoreline samples 1 fixed location in each of 10 basins - 2 times per year - 2 consecutive years (10 mins per location - 20 min travel time between = 200 minutes each time samples are collected - 2 times per year - two consecutive years = 800 minutes of volunteer time or 13.3 hours at \$13/hour = \$173 we used the general labor rate here	13.3	13	\$173.00
WCOLA (Wabana Chain of Lakes Association)	Insurance to meet minimal grant requirement (RFP says in section VIII A that these costs may be used as part of the match) Rate based on estimate by insurance professional (David Lick) who is a member of the WCOLA volunteer team.			\$500.00
WCOLA (Wabana Chain of Lakes Association)	Will provide the boats and gasoline for collection of water samples...20 hours of boat operation with fuel - as we own these boats - charging a rental fee seemed inappropriate - we decided to simply quote the fuel fee - and assumed 2 gallons of feul per hour - \$3.50 / gallon (with 2 stroke oil included in cost) for 10 hours	30	3.5	\$105.00

Matching description/ comments: if needed







**CPL100-053**  
**WCOLA Fish and Wildlife Habitat Stabilization Project**  
 Itasca County, LSOHC Northern Forest Planning Section

