

Keystone Woods WMA

Over the past 30 years Trust for Public Land (TPL) has worked to permanently protect the remaining high-quality habitat across the greater Twin Cities metropolitan region. By protecting these threatened lands, we are able to not only safeguard diverse ecosystems, but also to create close-to-home opportunities for millions of Minnesotans to experience a variety of wildlife-based recreation activities, including hunting, fishing and wildlife observation. Since its creation in 2008, the Outdoor Heritage Fund (OHF) has enabled TPL to protect 10 properties totaling 2,470 acres across the Twin Cities Metro.

An exciting project that TPL is currently working on is the 2,600 acres of land owned by the Kelley Land and Cattle Co. in northern Washington County, also known as the Kelley Farm. This sprawling piece of land is one of the largest tracts of undeveloped land in single ownership in the Metro Region and has a diversity of different land cover types, including hardwood forest, woodlands, grasslands and numerous interspersed wetlands. The land provides significant habitat for a variety of wildlife species and is part of the larger Carnelian Creek habitat corridor linking to the St. Croix River. The property contains several small lakes, which provide great habitat for a variety of aquatic species, including Barker Lake which has excellent fishing. The land has High Biodiversity Significance and is one of the County's Top 10 Priority Conservation Areas. It is further recognized as a conservation priority by the MN DNR under its Statewide Wildlife Action Plan.



TPL intends to purchase the majority of the Kelly Farm land (approx. 1,840 acres) this year which will become a new DNR Wildlife Management Area, Keystone Woods WMA. (Washington County will purchase the remaining approx. 760 acres to become part of the Big Marine Park Reserve, which is immediately adjacent to the north.) TPL intends to purchase the WMA property in two phases. The first phase will take place this spring, utilizing previously awarded OHF funding. The Lessard-Sams Council has recommended funding to purchase the balance of the WMA land which will occur this fall pending Legislative approval.

This is a very rare opportunity to protect such a large block of high quality habitat so close to the Metro. It will provide numerous outdoor recreation opportunities within an hour's drive of over half the State's population, many of whom may be new to WMAs.



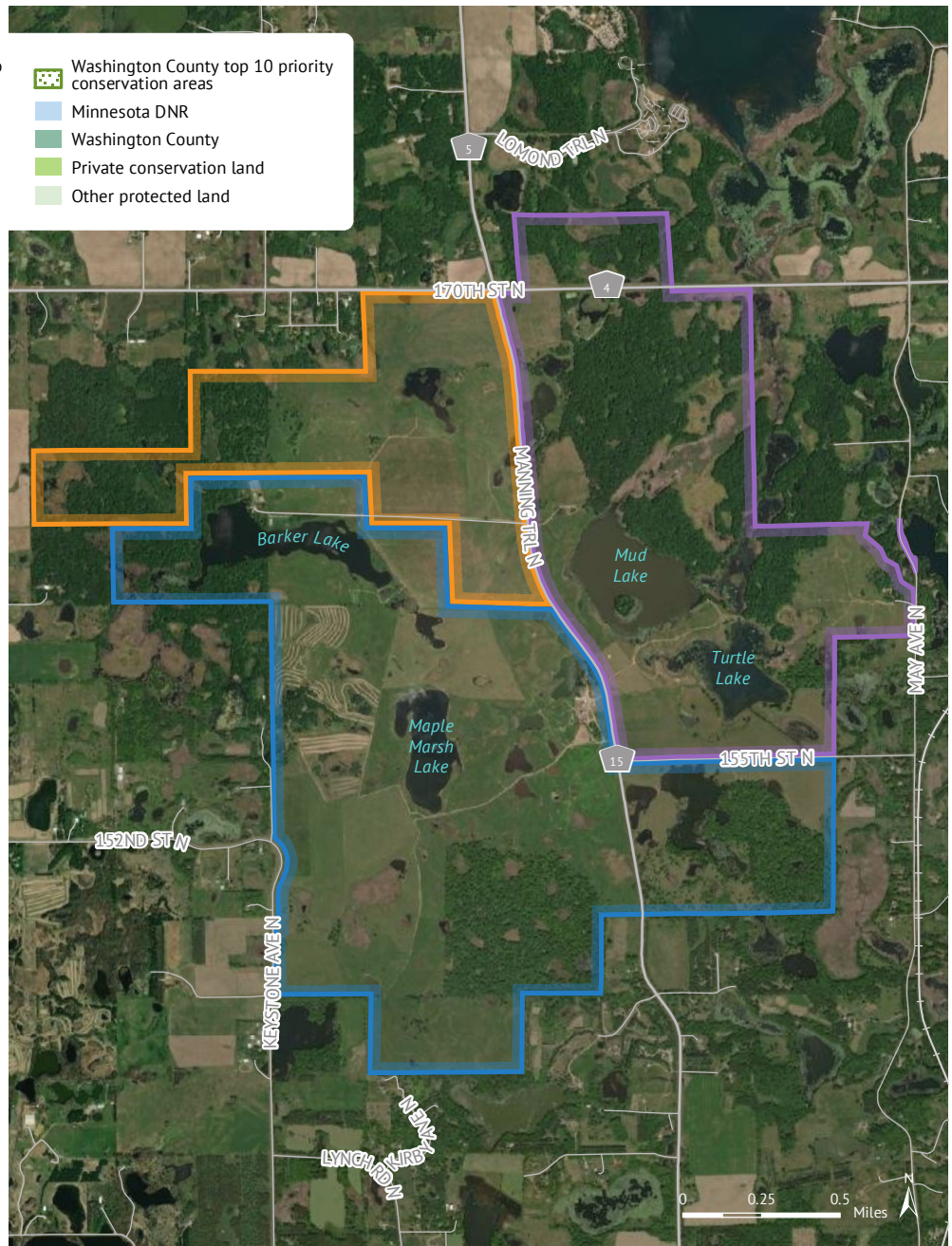
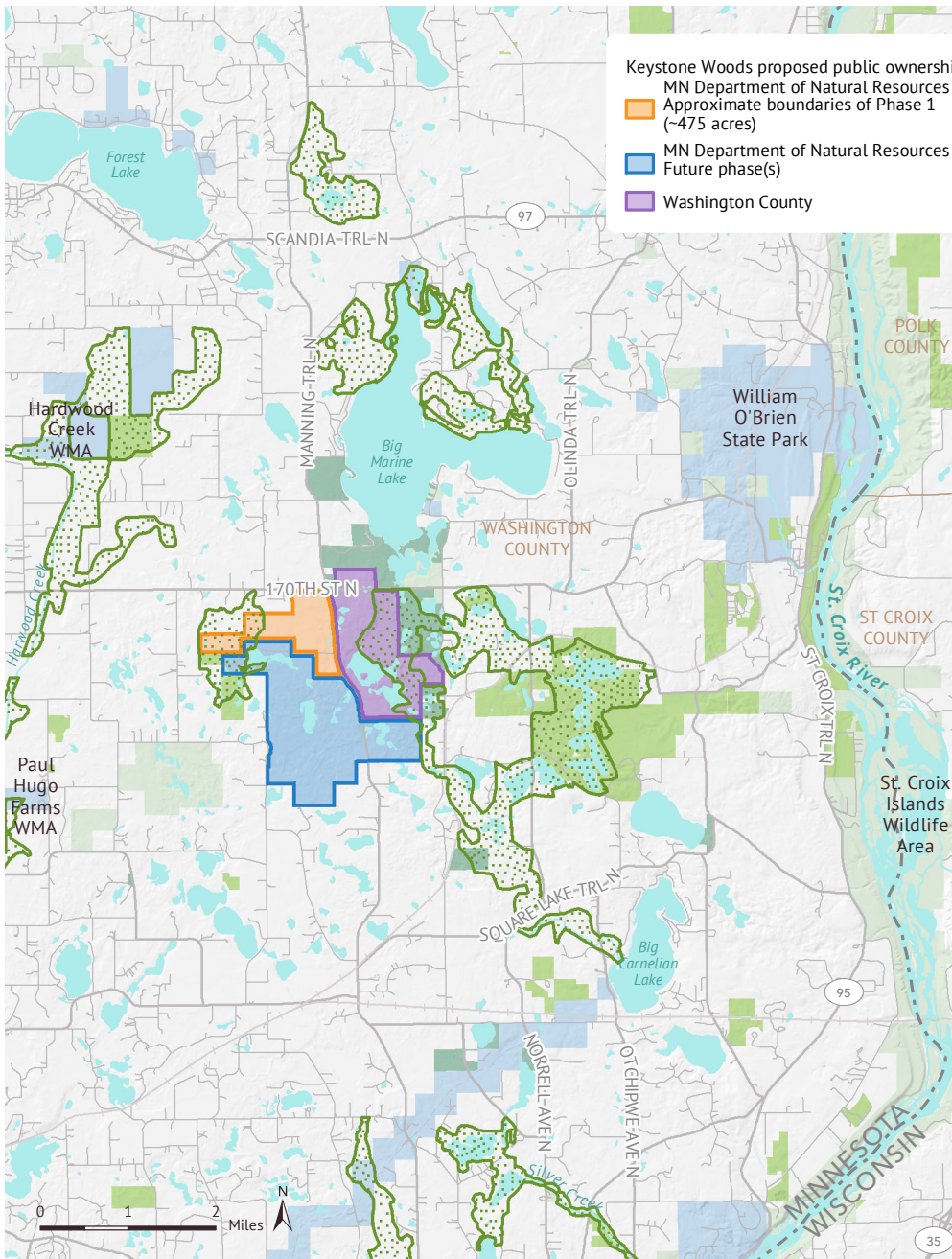
**TRUST FOR
PUBLIC
LAND™**

Connecting everyone to the outdoors™
tpl.org

FOR MORE INFORMATION:

Bob McGillivray - Land Protection Director
2610 University Avenue, Suite 300
St. Paul, MN 55114
651.999.5307

Bob.McGillivray@tpl.org



Keystone Woods WMA Acquisition

WASHINGTON COUNTY, MINNESOTA

August 23, 2022. Copyright © Trust for Public Land. Trust for Public Land and Trust for Public Land logo are federally registered marks of Trust for Public Land. Information on this map is provided for purposes of discussion and visualization only. www.tpl.org

