



# Driftless Trout Resource Management

Vaughn Snook | Assistant Fisheries Supervisor  
DNR Lanesboro Fisheries Office

- Stocking
- Stream Easement Acquisition & Violation Review
- Habitat Improvement Projects
- Current Staffing and Work Limitations
- Designated Trout Stream Additions
- Trout Population Estimates - 2017





# Brown Trout Stocking

DNR Lanesboro Fisheries Office

# Brown Trout Fingerlings (Annual)

Stream	Number
Beaver Creek, Main	9,000
Camp Creek (Reach 3)	5,000
Duschee Creek	23,500
Etna Creek	2,500
Kedron Creek	5,000
Lynch Creek	5,500
Mill Creek	18,000
Rice Creek	10,500
S. Br. Root (Reach 1A, 1C)	130,000

Stream	Number
Thompson Creek	7,500
Willow Creek	12,500
Wisel Creek	41,000

S. Br. Root (Reach 1A) – Lanesboro

S. Br. Root (Reach 1C) – Ups Lanesboro

S. Br. Root (Reach 2A) – Preston

Camp Creek (Reach 3) – Ups easement



# Brown Trout Fingerlings (Biennial)

Stream	Biennial Number	Future Annual Number
S. Br. Root (Reach 2A)	58,000	29,000
S. Fork Root River	17,000	8,500
Rush Creek	43,000	21,500
M. Br. Whitewater	18,000	9,000
Winnebago Creek	15,750	7,875

S. Br. Root (Reach 1A) – Lanesboro  
S. Br. Root (Reach 1C) – Ups Lanesboro  
S. Br. Root (Reach 2A) – Preston  
Camp Creek (Reach 3) – Ups easement

**Current Total = 270,000 to 421,750**

**By 2020 = 345,875**

# Brown Trout Fingerling - Discontinued Stocking

Stream – Discontinued 2003-2005	Number of reduction	Why?
West Beaver Creek	15,000	NRC
Bee Creek	10,000	NRC
Lost Creek	5,000	NRC
West Branch Money Creek	5,500	NRC
Pine Creek (Rush Creek watershed)	41,000	NRC
Pine Creek (New Hartford)	14,000	NRC
Riceford Creek	12,000	NRC & small easement

NRC = Natural Reproduction Checks indicated sufficient reproduction over multiple years

# Brown Trout Fingerling - Discontinued Stocking

Stream – Discontinued 2003-2005	Number of reduction	Why?
S. Br. Root River (Reach 2B – Carimona)	92,000	NRC & no easement
Rush Creek (Interstate 90 upstream)	7,000	NRC
Spring Valley Creek	46,000	NRC
Watson Creek	10,000	NRC & no easement

NRC = Natural Reproduction Checks indicated sufficient reproduction over multiple years

**Total discontinued = 257,500**



# Brown Trout Stocking History

Stream	Year last stocked
Trout Run	2002 (Dns of Bucksnot)
Forestville Creek	1976
Canfield Creek	1977
Badger Creek	1974
South Branch Whitewater River	1988
North Branch Whitewater River	1996
Garvin Brook	1977 (Reach 4 – Ups Stockton)
Pickwick Creek	1990



# Rainbow Trout Stocking

DNR Lanesboro Fisheries Office

# Rainbow Trout Yearlings (Annual)

Stream	Number
Beaver Creek, Main	1,000
Camp Creek	1,000
Crooked Creek	500
Duschee Creek	3,200
Lanesboro Sylvan Park Ponds	7,500
Mill Creek	2,250
South Branch Root River	5,550
Rush Creek	3,100
Spring Valley Creek	1,500



# Rainbow Trout Yearlings (Annual)

Stream	Number
Willow Creek	400
Riceford Sportsman Pond	1,500
Whitewater River	7,000
South Branch Whitewater River	2,000
North Branch Whitewater River	4,000
Middle Branch Whitewater River	4,500
Winnebago Creek	1,050
TOTAL	46,050

# Rainbow Trout Yearlings (Annual)

- **Future Reductions**

- Beaver Creek (fewer anglers)
- Camp Creek (C&R, 3<sup>rd</sup> Saturday in May)
- North Branch Whitewater River (slot)
- Riceford Sportsman's Pond (limited angling opportunities)
- Whitewater River (fewer anglers)

- **Future Increases**

- Mill Creek (more anglers)
- Willow Creek (more anglers)

# Rainbow Trout Fingerlings (Annual)

Stream	Number
Crooked Creek	5,000
South Branch Root River (Reach 1A, 1C and 2A)	12,600
South Fork Root River (Reach 4)	5,000
Wisel Creek	5,000
TOTAL	27,600

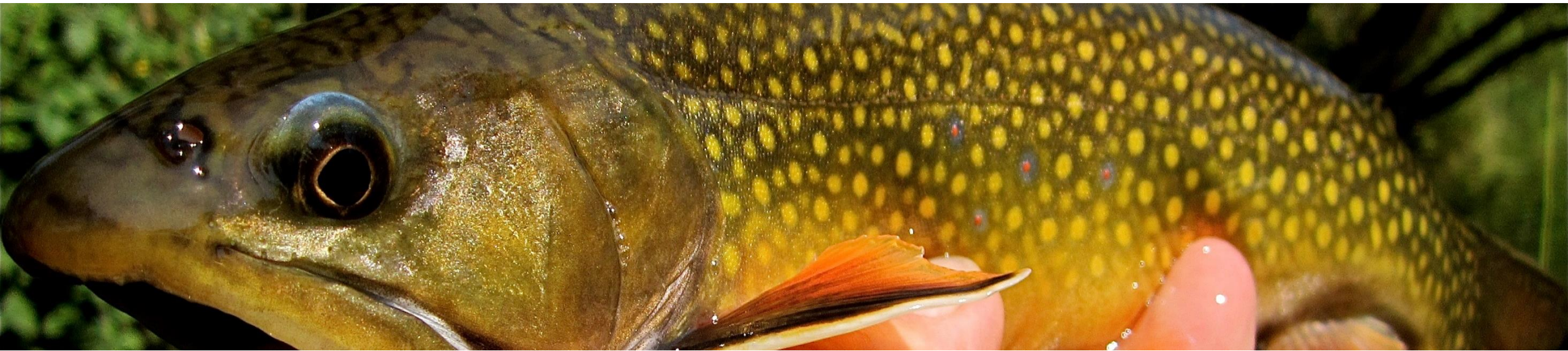
S. Br. Root River (Reach 1A) – Lanesboro

S. Br. Root River (Reach 1C) – Ups Lanesboro

S. Br. Root River (Reach 2A) – Preston

S. F. Root River (Reach 4) – Blagsvedt Creek mouth, Larson's Family Farm and WMA area





# Heritage Brook Trout Stocking

DNR Lanesboro Fisheries Office

# Brook Trout Stocking (Minnesota Wild strain)

Stream miles of Brook Trout reintroductions = 31.8 miles

Trout streams managed for Brook Trout/Brown Trout = 233 miles

Trout streams managed for Brook Trout only = 111 miles

Objective – Provide additional angling opportunities, connect with landowners, create general awareness of the importance of good water quality and desirable fish communities.

# Brook Trout Stocking (Minnesota Wild strain)

Stream – Known Success	Stocked
Lynch Creek	1993 – 1995, 2007 - 2009
Little Jordan Creek	1993 – 1995, 2007 - 2009
South Fork Crooked Creek	2004, 2006
Daley Creek	2008 - 2009
Duschee Creek	2006 - 2009
Eitzen Creek	2008 - 2009
South Branch Root River	2008 - 2009
Torkelson Creek	2008 - 2009
Mill Creek Trib (Sprau's)	2008 - 2009



# Brook Trout Stocking (Minnesota Wild strain)

Stream - Unknown	Stocked
Big Spring Creek	2008 – 2009
Crystal Creek	2008 – 2009
Etna Creek, S. Br.	2008 - 2009
Pickwick Creek	2008 - 2009
Rupprecht Creek	2005 - 2006
Watson Creek Trib (2)	2008 - 2009

# Brook Trout Stocking (Heritage – Disease Testing)

Area	Stream	2009	2010	2011	2012	2013	2014	2015	2016	2017	2018
Lan	Schueler Creek								P	F	?
Lan	Hemmingway Creek		P	F				P	P	P	
Lan	Coolridge Creek	P	P	F				P	P	P	
Lan	Maple Creek							P	P	F	
Lan	Swede Bottom Creek							P	P	F	
Lan	Badger Creek							P	P	F	
Lan	Vesta Creek								P	P	?
Lan	Nepstad Creek	P	P	F					P	P	?
Lan	Hallum Creek										
LC	East Indian Creek	P	P	P	P		P	P	F		



# Stream Easement Acquisition

DNR Lanesboro Fisheries Office

# New State Angling Easement Acquisitions

Stream	Approx. Length
Winnebago Creek (Burg's)	21,700 feet
Winnebago Creek (Schulze's)	3,100 feet
Eitzen Creek, Burg Creek, New Yorker Hollow (Burg's)	6,900 feet
Garvin Brook (Burfeind's)	1,950 feet
Garvin Brook (Biederman's)	900 feet
Garvin Brook (Fritz's)	760 feet
Thompson Creek, Butterfield Creek (Becker's)	4,900 feet

# New State Angling Easement Acquisitions

Stream	Approx. Length
Thompson Creek, Butterfield Creek (Becker's)	4,900 feet
Rush Creek (Knutson's)	300 feet
Vesta Creek (Choice WMA)	4,800 feet
S. Fork Root River (Severson's)	1,650 feet
<b>TOTAL</b>	<b>47,000 feet or 8.9 miles</b>

Maps of all new easements are on the Trout Stream Maps page  
“New fishing easement maps”



# Winnebago Creek – Eitzen Creek





# Winnebago Creek – Burg Creek





# Winnebago Creek – New Yorker Hollow





# Garvin Brook - Stockton





# Rush Creek



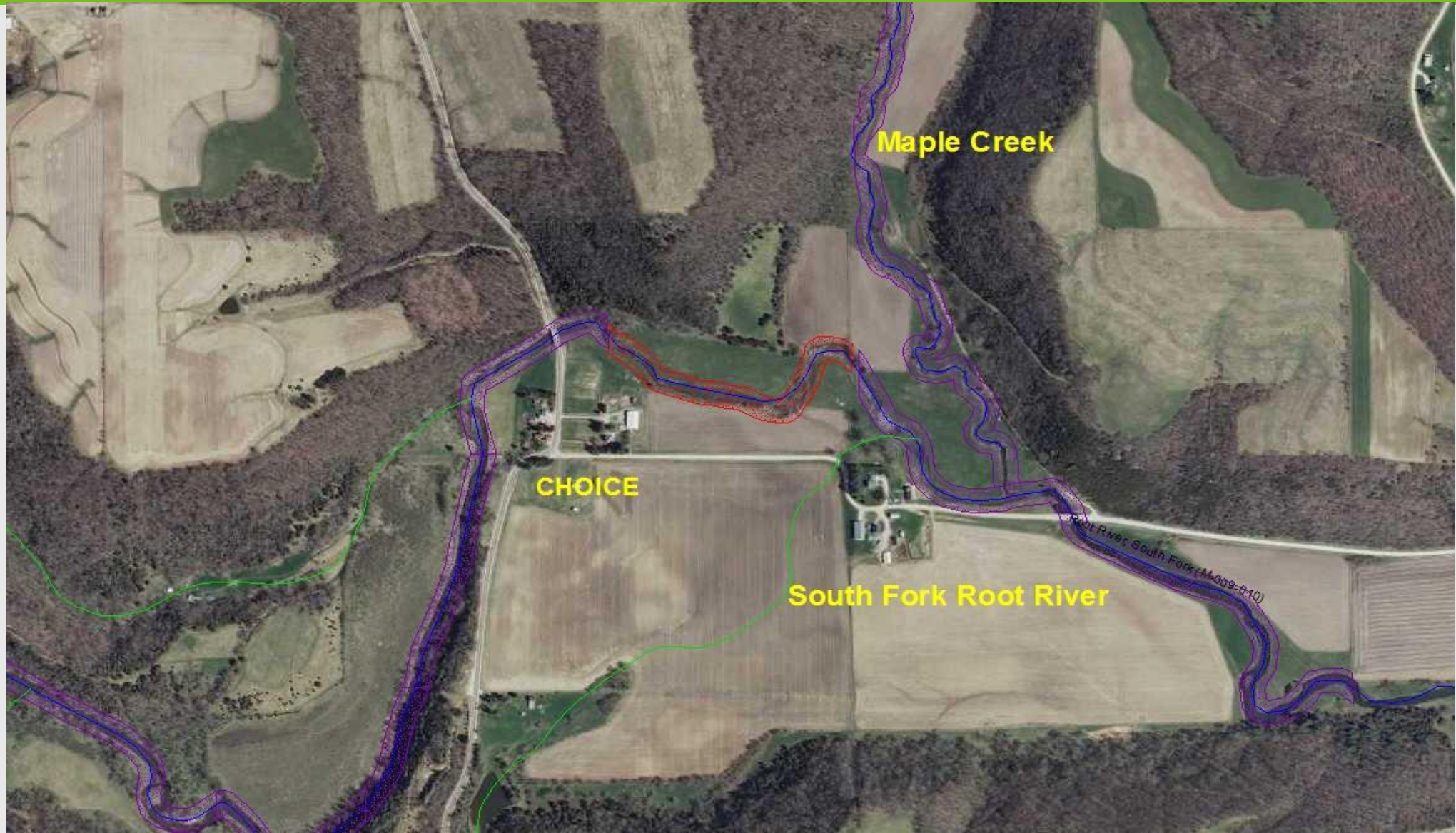


# Vesta Creek – Choice WMA





# South Fork Root River - Choice



# State Angling Easement Violations

- 42 parcels w/violations in 2010 (tillage, dumping, public waters)
- 7 parcels with violations in 2017 (all tillage)
- Difficulties include...
  - Communication with renters via landowners
  - Buffer vs state angling agreement terms (county vs state compliance)
- Requires a large amount of time with monitoring compliance, letter writing, communication with others involved, etc. (5% or ~100 hours)





# Habitat Improvement Projects

DNR Lanesboro Fisheries Office



# Rush Creek - 2015





# Rush Creek - 2016





# Rush Creek - 2016





# Rush Creek - 2016





# Rush Creek - 2016





# Rush Creek - 2016





# Rush Creek - 2017





# Rush Creek - 2017





# Rush Creek - 2017





# Rush Creek - 2017





# Rush Creek - 2017







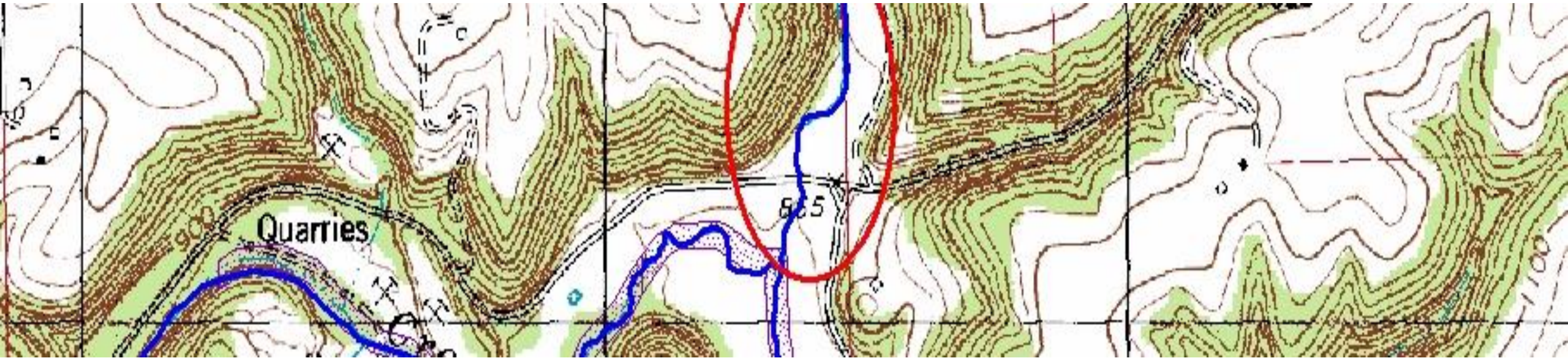
# Current Staffing and Work Limitations

DNR Lanesboro Fisheries Office

# DNR Fisheries Area Staffing

	2005	2017	FUTURE
Supervisor	X	X	X
Assistant Supervisor	X	X	X
Fisheries Specialist	X	X	X
Fisheries Specialist (2), Seasonal Laborer (1)	X		
Fisheries Technician	X	X	X
Fisheries Specialist – Habitat Improvement	X	X	?
Seasonal Equipment Operator (2)	X	X	?
Stream Habitat Specialist (Regional)		X	X
Stream Easement Monitoring Specialist (Regional)		X	X
Office Administrative Specialist (OAS)		X	





# Designated Trout Stream Additions

DNR Lanesboro Fisheries Office



# Trout Stream Designation – New

Stream	County
Bridge Creek	Houston
Latsch Creek	Winona
Logan Creek & Tributary	Olmsted
N. Br. Whitewater River	Olmsted
Shamrock Creek	Houston
Unnamed Creek (Kendall)	Houston

## What does “designation” mean for the DNR?

- Changes management focus
- Larger array of funds for management
- Intensity of public permit reviews

## What does “designation” means for the landowner?

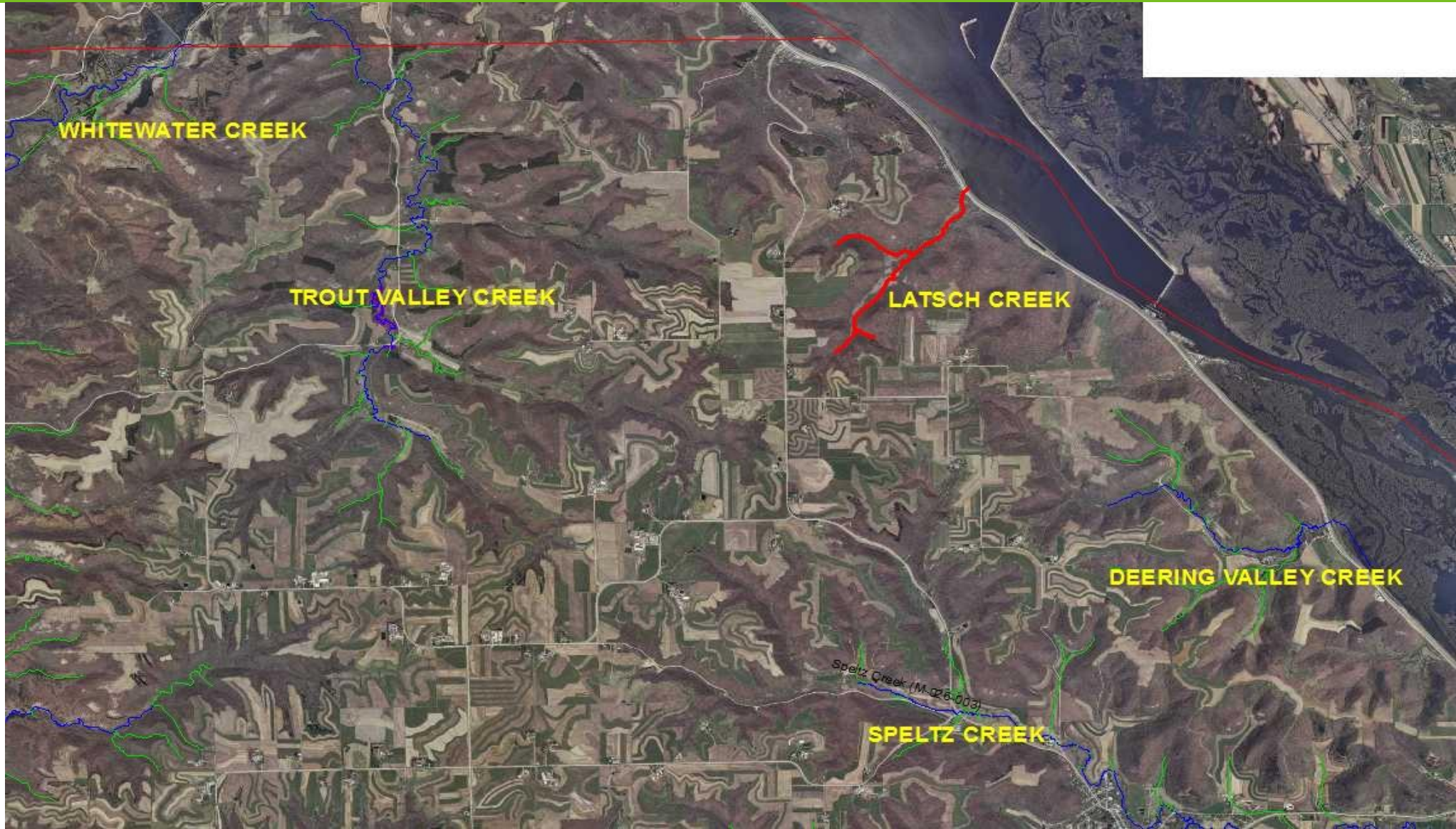
- Water quality standard minimums
- Public waters work restrictions (April 15 to October 15)
- County ordinances (Ex. Quarries)

# Bridge Creek – Houston County



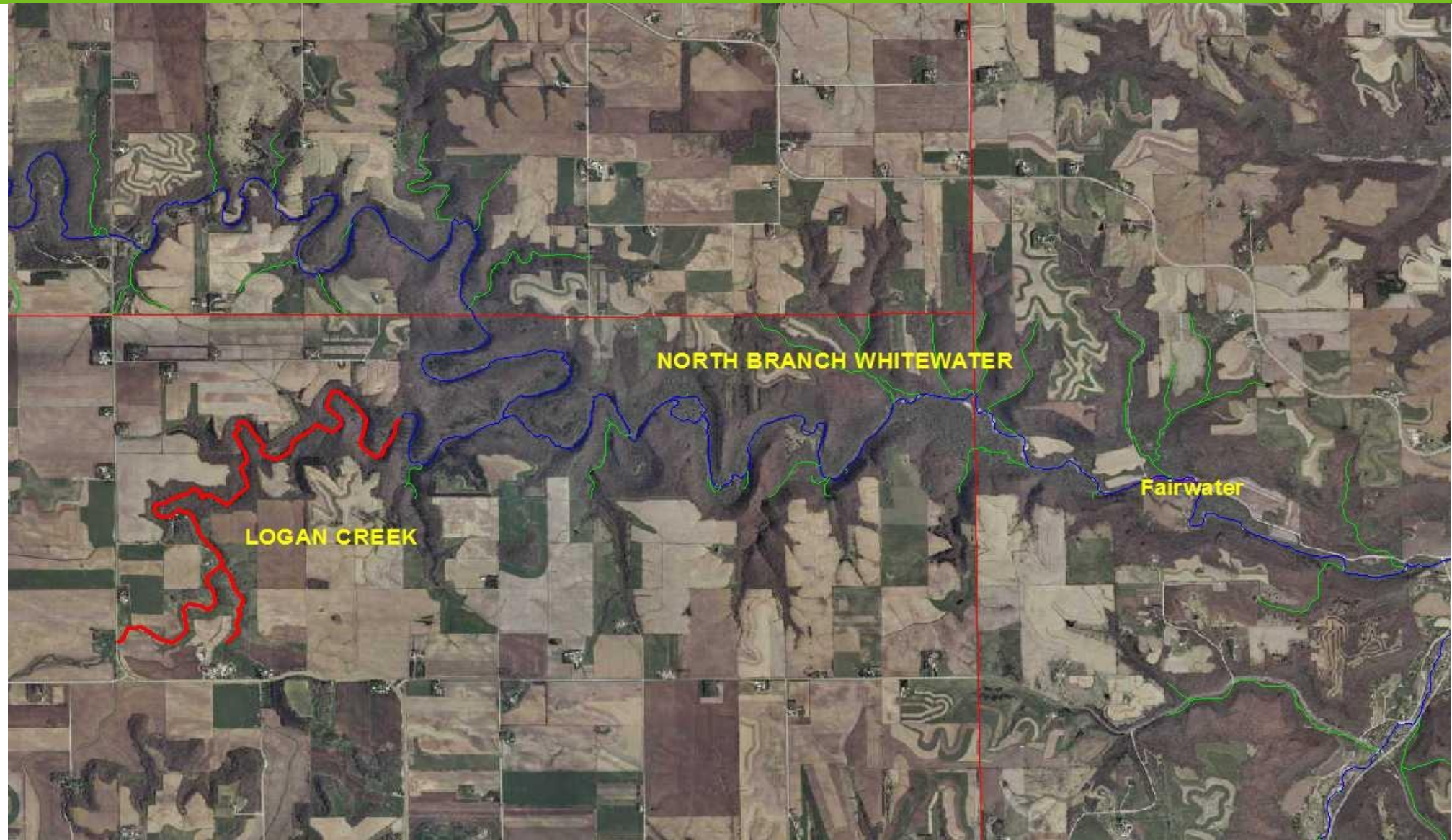


# Latsch Creek – Winona County





# Logan Creek – Olmsted County





# North Branch Whitewater River



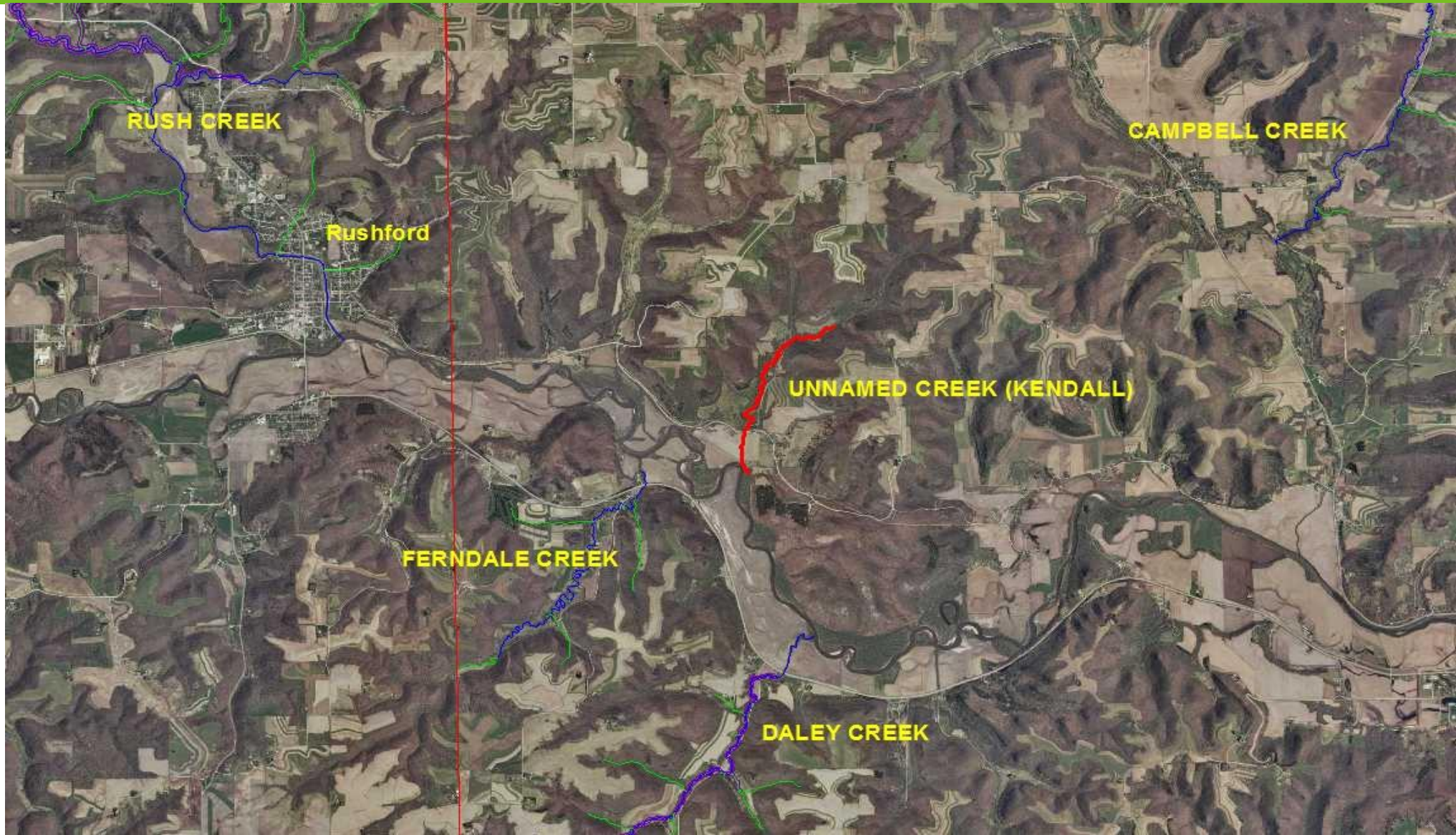


# Crooked Creek – Shamrock Creek





# Unnamed Creek (Kendall Creek)





# Trout Stream Designation - Fixes

Stream	County	Township	Section to add
Camp Hayward Creek	Fillmore	T104N, R8W	S30
Crooked Creek	Houston	T102N, R5W	S16
Hemmingway Creek	Fillmore	T105N, R9W	S27
M. Br. Whitewater River	Winona	T107N, R10W	S29
South Fork Root River	Fillmore	T102N, R8W	S16
Unnamed Creek (Peterson)	Fillmore	T104N, R8W	S30

After comparisons of multiple GIS layers with the language in state statute it was determined that small areas (as small as 500 feet) were left out of statute language and trout stream designation. These corrections will amend the statute to include the above T, R, S as being designated trout streams.





# Trout Population Estimates - 2017

DNR Lanesboro Fisheries Office



# Brown Trout Population Estimates - 2017

Stream	River Mile	Recruit	Adult	>12 inches	>14 inches	Biomass Lbs/acre	IBI (max 120)
Beaver Creek WW	3.5	649	1,554	70	28	213.27	90
Bee Creek	0.20	356	1,173	354	63	221.58	90
Camp Creek	2.70	1,537	2,927	96	0	215.06	60
S. Fk. Root River	35.3	751	2,849	218	49	338.81	60
S. Br. Whitewater	3.50	707	445	176	74	77.52	45
Garvin Brook	13.0	399	864	207	16	292.05	95
Gribben Creek	1.94	3,779	3,631	261	60	503.35	95
M. Br. Whitewater	12.7	1,274	1,351	181	26	234.52	100
S. Br Root River	31.5	529	1,691	190	28	148.66	70



# Brown Trout Population Estimates - 2017

Stream	River Mile	Recruit	Adult	>12 inches	>14 inches	Biomass Lbs/acre	IBI (max 120)
Trout Run	8.63	1,140	3,843	367	271	350.82	85
Winnebago Creek	14.5	463	955	160	26	166.08	70
Winnebago Creek	15.8	567	610	159	41	129.48	95

Stream	River Mile	Recruit	Adult	>12 inches	>14 inches	Biomass Lbs/acre	IBI (max 120)
Stockton Valley Creek	4.10	347	571	130	39	180.11	85
Sullivan Creek	4.60	611	790	316	108	534.83	105

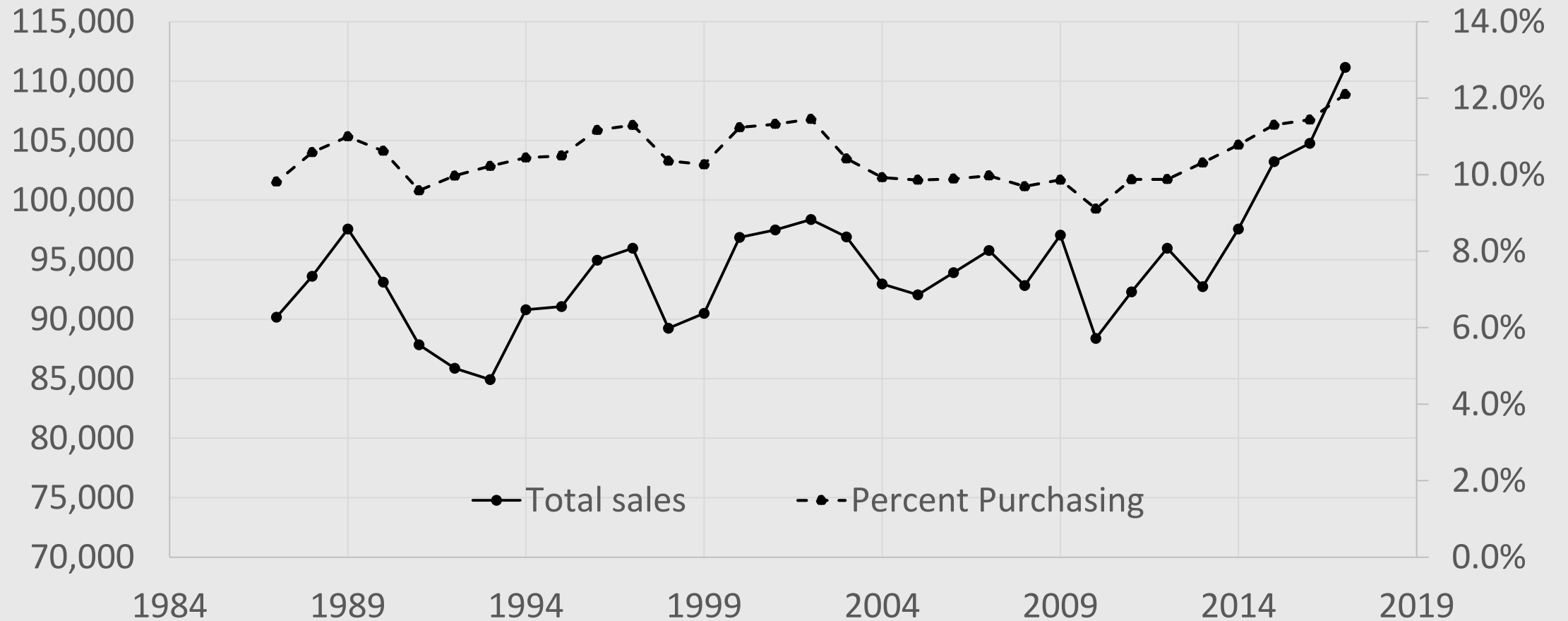


# Brook Trout Population Estimates - 2017

Stream	River Mile	Recruit	Adult	>10 inches	Biomass Lbs/acre
M. Br. Whitewater	12.7	327	113	13	14.07
S. Br. Whitewater	3.5	0	13	0	0.49
S. Fk. Root River	35.3	9	40	9	3.92
Campbell Creek	2.37	46	530	66	111.60
Sullivan Creek	4.60	308	142	80	67.45
West Burns Valley Creek	0.70	289	155	26	47.0



# Minnesota Trout Stamp Sales





# Thank You!

**Vaughn Snook | Assistant Fisheries Supervisor**

[vaughn.snook@state.mn.us](mailto:vaughn.snook@state.mn.us)

507-467-2442 Ext 225