

Brook Trout Fishing

Sucker Brook contains both stocked and naturally produced brook trout. Fish can be caught beginning with the stream trout fishing opener in mid-April and anglers can expect to catch



fish up to 12 inches in length. Catchable size brook trout (8 to 10 inches) are generally stocked before the trout opener in mid-April.

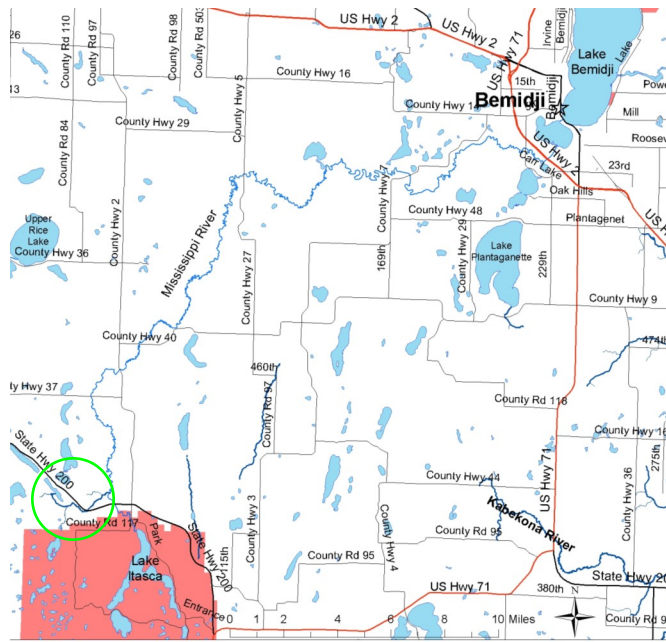
After several years without stocking during the 1990's, this practice resumed in 2003. Stocking yearling brook trout



coupled with intensive beaver management has resulted in two strong year classes of naturally

produced fish that will begin to reach catchable size in 2007. These natu-

rally produced fish, along with fish from annual stockings, provide a quality brook trout fishery.



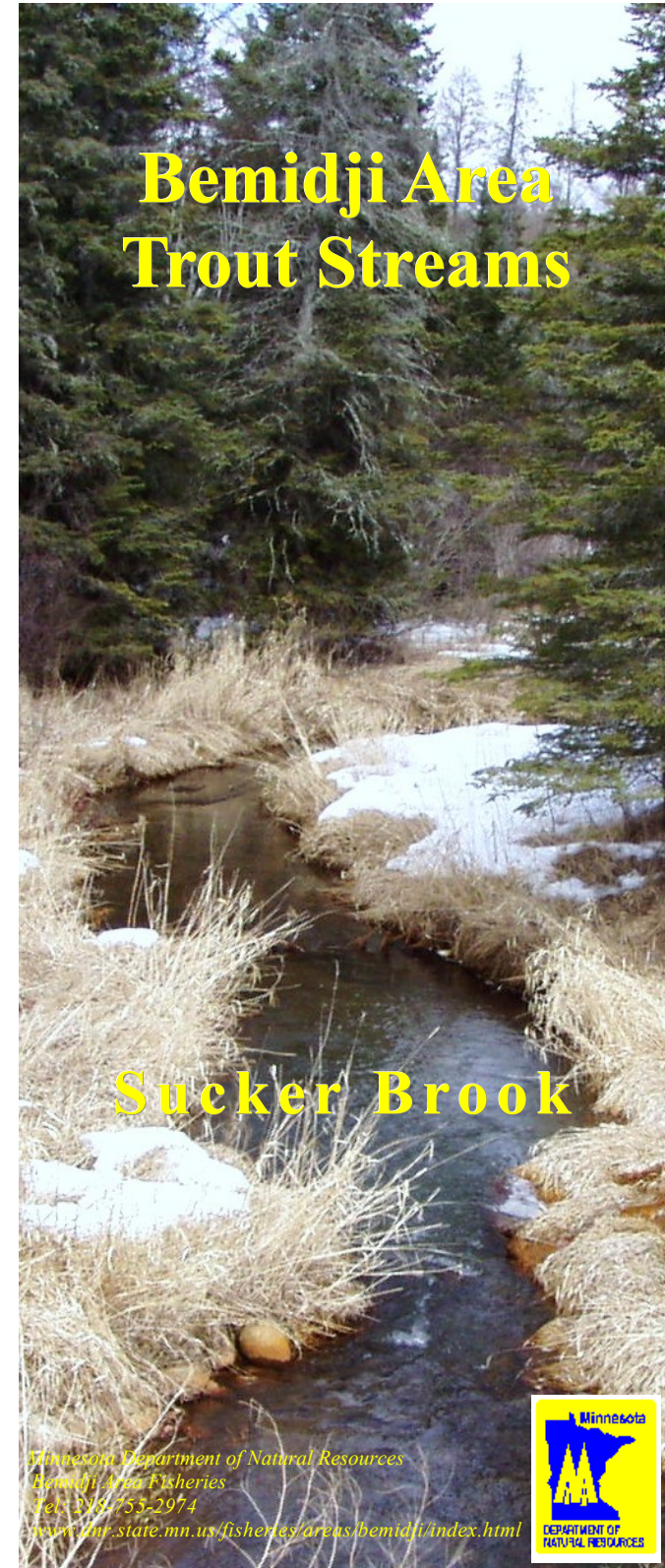
Sucker Brook lies in southern Clearwater County approximately 25 miles southwest of Bemidji.

From Bemidji, take US HWY 71 south and turn west on State Hwy 200. From Itasca State Park, exit via the north entrance and turn west on State Hwy 200. In addition to 2.5 miles of stream on public land, trout fishing easements that allow anglers to walk on the stream bank within 66 feet of the center of the stream are in place along 0.5 miles of stream (see map). Note that these easements only allow fishing and other activities such as camping and hunting are not allowed.

Signs indicate the angler access corridor and define where private property begins. Please respect private property and be a good steward of your stream resources.



Bemidji Area Trout Streams



Sucker Brook

Minnesota Department of Natural Resources
Bemidji Area Fisheries
Tel. 218.753.2974
www.dnr.state.mn.us/fisheries/areas/bemidji/index.html



Sucker Brook Trout Fishing Map

