

000148

(A E) RESOLUTION NO. 97-2-89

The following resolution was offered by Commissioner McLaughlin and Commissioner Andrew:

WHEREAS, the Hennepin County Board of Commissioners supports revitalization and restoration of the Mississippi River; supports increased recreational use of the Mississippi River; encourages the creation of rehabilitation opportunities for troubled inner city youth; supports increased economic development of the St. Anthony Falls area; supports the creation of parks open to the general public; and

WHEREAS, there is land in Southeast Minneapolis adjacent to the Lower St. Anthony Falls dam which is presently unused and undeveloped; and

WHEREAS, this land would be a suitable site for a diversion of water from the main stem of the Mississippi River into a new channel of cascading water to serve as a white water recreational area for canoeists, rafters, kayakers that would permit a range of activities from novice rafting to Olympic level competitions; and

WHEREAS, white water parks in locations such as Wausau, Wisconsin; South Bend, Indiana and other locations across the United States and Europe have proven to be economically beneficial to their communities; and

WHEREAS, a white water park would permit firefighters and other professionals to train locally for water rescue; and

WHEREAS, white water rafting experiences have been used as a part of successful rehabilitation programs for troubled youth; and

WHEREAS, the Mississippi Whitewater Park Development Corporation has been created to promote the creation of white water park at the Lower St. Anthony Falls site in Southeast Minneapolis; and

WHEREAS, the proposed park would improve a desolate and neglected area of the City of Minneapolis with plans for green space designed with indigenous flora, rock and earthen materials, in addition to the water channel itself which would be created to look like a natural stream bed; and

WHEREAS, the combination of a 20 foot vertical drop with the substantial flow of the Mississippi River, in the heart of a metropolitan area of 2.5 million people, would make the Lower St. Anthony Falls site perhaps the premier white water park in the world; and

WHEREAS, members of the Mississippi Whitewater Park Development Corporation have met with representatives of the University of Minnesota, the Minneapolis Park Board, the

FEB 11 1997

000149

Army Corps of Engineers, Northern States Power, The Marcy Holmes Neighborhood, National Park Service and others: all these have expressed interest in the proposal.

BE IT RESOLVED, by the Hennepin County Board of Commissioners;

That the Hennepin County Board of Commissioners endorses the concept of a Whitewater Park at the lower St. Anthony Falls location as proposed by the Mississippi Whitewater Park Development Corporation and the County encourages relevant governmental and private entities work together to make this park a reality.

The question was on the adoption of the resolution and there were SEVEN YEAS and NO NAYS as follows:

COUNTY OF HENNEPIN BOARD OF COUNTY COMMISSIONERS	YEA	NAY	OTHER
Mike Opat	<u>X</u>	---	---
Mark Stenglein	<u>X</u>	---	---
Mark Andrew	<u>X</u>	---	---
Randy Johnson, Chair	<u>X</u>	---	---
Mary Tambornino	<u>X</u>	---	---
Penny Steels	<u>X</u>	---	---
Peter McLaughlin	<u>X</u>	---	---

RESOLUTION ADOPTED
ATTEST: 
Clerk of the County Board

FEB 11 1997

MISSISSIPPI CORRIDOR
NEIGHBORHOOD COALITION



P.O. Box 18746 • Minneapolis, MN • 55418-0746 • 612-768-0249 FAX: 612-781-1191 • e-mail: mcnc@vitalserve.com
web site: <http://vitalserve.com/mcnc>

Working to preserve, protect, enhance and restore the Mississippi River in Minneapolis to serve the interests of neighborhood residents and others who value and respect our Great River.

October 24, 1998

Bill Tilton
Mississippi Whitewater Park Development Corporation
2220 Firstar Center
101 East Fifth Street
St. Paul, MN 55101

Dear Bill:

The Mississippi Corridor Neighborhood Coalition voted on October 17, 1998, to support the establishment of a whitewater park on the Mississippi River in the central riverfront of Minneapolis.

The Mississippi Corridor Neighborhood Coalition is a federation of seventeen community groups in north, northeast and southeast Minneapolis. Our mission is to preserve, protect, enhance and restore the Mississippi River to serve the interests of neighborhood residents and others who value and respect our Great River, now and for future generations.

One of our goals is to provide greater access to the river in the upper Mississippi River corridor for recreational use, and to do so without adversely affecting the river's water quality or ecosystem. The whitewater park development clearly fits into that goal.

Please feel free to use this endorsement in any way you believe helpful to establishing the park and securing funding.

Cordially,

Frances Gumnga
for the Board of Directors



OLD ST. ANTHONY ASSOCIATION

December 3, 1998

Mr. Bill Tilton
Mississippi Whitewater Park Development Corporation
2220 Firstar Center
101 East Fifth Street
St. Paul, MN 55101

Dear Mr. Tilton:

Thank you for attending the meeting of the Old St. Anthony Association (OSAA) on November 17, 1998. Your presentation on developing a whitewater canoeing/rafting park along the Mississippi River was well received by all OSAA members in attendance.

Members of our association take great pride in the fact that Old St. Anthony was the birthplace of Minneapolis. Of course, the Mississippi River was an essential element in its establishment. The OSAA has long felt the river is being under utilized as an asset in our community.

The Old St. Anthony Association enthusiastically supports the efforts of the Mississippi Whitewater Park Development Corporation to develop the proposed site downstream of the Historic Stone Arch Bridge. We ask that you keep us informed of your progress with the project and offer our assistance in helping you carry it through.

Best wishes and Good Luck!

A handwritten signature in black ink, appearing to read "Michael P. McMonagle". The signature is written in a cursive style and is positioned above the printed name.

Michael P. McMonagle, President
Old St. Anthony Association

MPM:jc

FEBRUARY 7, 1997

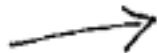
Passed February 7, 1997.
 Approved February 13, 1997. S. Sayles
 Belton, Mayor.
 Attest: M. Keefe, City Clerk.

IGR - Your Committee recommends that the City endorse House File (HF) No 21, authorizing the City of Minneapolis to regulate, by ordinance, the carrying or possessing of pistols within City limits.

Adopted. Yeas, 13; Nays none.
 Passed February 7, 1997.
 Approved February 13, 1997. S. Sayles
 Belton, Mayor.
 Attest: M. Keefe, City Clerk.

IGR - Your Committee recommends passage of the accompanying Resolution endorsing the concept of a Mississippi Whitewater Rafting Park.

RESOLUTION 97R-017
 By Deledzie



Endorsing the concept of a Mississippi Whitewater Rafting Park.

Whereas, the Minneapolis City Council supports revitalization and restoration of the Mississippi River, supports increased recreational use of the Mississippi River, encourages the creation of rehabilitation opportunities for troubled inner city youth, supports increased economic development of the St. Anthony Falls area, and supports the creation of parks open to the general public; and

Whereas, there exists an area of land (in Southeast Minneapolis adjacent to the Lower St. Anthony Falls dam) which is presently unused and undeveloped; and

Whereas, this land would be a suitable site for a diversion of water from the main stem of the Mississippi River into a new channel of cascading water to serve as a white water recreational area for canoeists, rafters, kayakers and possible inner tubers, with a headgate to control water flows, thereby permitting a range of activities from novice rafting to Olympic level competitions; and

Whereas, white water parks in locations such as Wausau, Wisconsin, South Bend, Indiana and other locations across the United States and Europe, have proven to be economically beneficial to their communities; and

Whereas, a white water park would permit firefighters and other professionals to train locally for water rescue; and

Whereas, white water rafting experiences have been used as a part of successful rehabilitation programs for troubled youth; and

Whereas, the Mississippi Whitewater Park Development Corporation has been created to promote the creation of a white water park at the Lower St. Anthony Falls site in Southeast Minneapolis; and

Whereas, the proposed park would improve a desolate and neglected area of the City of Minneapolis with plans for green space designed with indigenous flora, rock and earthen materials, in addition to the water channel itself which would be created to look like a natural stream bed; and

Whereas, the combination of a 20-foot vertical drop with the substantial flow of the Mississippi River, in the heart of a metropolitan area of 2.5 million people, would make the Lower St. Anthony Falls site perhaps the premier white water park in the world; and

Whereas, members of the Mississippi Whitewater Park Development Corporation have met with representatives of the University of Minnesota, the Minneapolis Park Board, the Army Corps of Engineers, Northern States Power, Marry Holmes, National Park Service and others — and all have expressed interest in the proposal, while none have expressed reasons why the project should not happen;

Now, Therefore, Be It Resolved by The City Council of The City of Minneapolis:

That the City of Minneapolis endorses the concept of a Mississippi Whitewater Rafting Park at the Lower St. Anthony Falls location, as proposed by the Mississippi Whitewater Park Development Corporation, and the City encourages relevant governmental and private entities to work together to make this park a reality.

Adopted. Yeas, 13; Nays none.
 Passed February 7, 1997. J. Cherryhomes,
 President of Council.

Approved February 13, 1997. S. Sayles
 Belton, Mayor.
 Attest: M. Keefe, City Clerk.

IGR - Your Committee recommends approval to continue to endorse the Plus Summer Program, which provides summer evening recreation for young persons who are 12-18 years old, in the amount of \$180,000, to be paid by the State.

Adopted. Yeas, 13; Nays none.



Marcy-Holmes Neighborhood Association
University Technology Center, Rm. 138
1313 5th Street S.E.
Minneapolis, Minnesota 55414

(612) 379-3814

November 13, 1998

George Dunn & Bill Tilton
Mississippi Whitewater Park
Development Corporation
2220 Firststar Center
1010 East Fifth Street
St. Paul, MN 55101-1808

Dear George and Bill,

Thank you for coming to our board meeting this week. We are very interested in the Whitewater Park, and in that regard, the following motion was passed:
The MHNA supports for the concept of a Whitewater Park to be created at the Mississippi Gorge's Lower Dam Site, and wishes to be included in the planning process, and looks forward to the development of the park as an asset to the community.

Please keep us informed of your progress on this project.

Sincerely,

Theodore Tucker
President, MHNA

cc: Council President Jackie Cherryhomes
Council Member Joan Campbell
Victoria Johnson, Old St. Anthony Association

StarTribune

DNR examines feasibility of downtown rafting course

Parting the waters

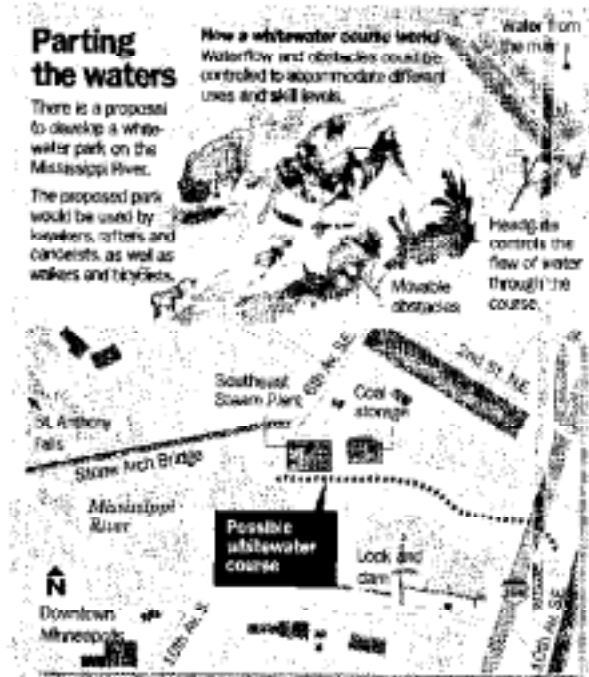
There is a proposal to develop a white-water park on the Mississippi River. The proposed park would be used by loggers, rafters and canoers, as well as walkers and bicyclists.

How a whitewater course would work: Waterflow and obstacles could be controlled to accommodate different uses and skill levels.

Water from the river

Headgate controls the flow of water through the course.

Movable obstacles



By Melissa Levy
Star Tribune Staff Writer

Cross the Stone Arch Bridge from downtown Minneapolis and take a right. The next half-mile stretch of Mississippi riverfront is a hard-to-reach industrial area, where the only daytime activity involves crews working on the University of Minnesota's steam plant.

To a group of local kayakers and other water enthusiasts, this site at the lower St. Anthony Falls holds the potential to become an urban whitewater park.

"It's time to bring St. Anthony Falls back to what it used to be," said Bill Tilton, a St. Paul lawyer and leader of the nonprofit Mississippi Whitewater Park Development Corp., a group that has been promoting the idea of a riverfront course for about four years. "There's no reason why we can't do this."

In its last session, the Minnesota Legislature gave the state Department of Natural Resources \$100,000 to study the feasibility of developing a Mississippi whitewater park. It was the first major financial backing for the idea, which would cost millions to develop and faces a number of logistical obstacles.

To complete the feasibility study, the DNR has hired a national architect and a water-engineering firm that together have designed more than a dozen canoe and kayak facilities, including the \$27.5 million course for the 1996 Olympics, on the Ocoee River in Tennessee.

PROPOSAL continues on B7:

The challenges include figuring out who would pay and how the park would fit into existing riverfront plans.

ALSO INSIDE:

► NSP considers donating riverfront property.

PROPOSAL from B1**Course still needs to find long-term revenue stream**

The consultants, Denver-based McLaughlin Water Engineers Ltd. and architect John Anderson of the Washington, D.C., area, will be in Minneapolis today and Saturday to hold public meetings on the Mississippi whitewater park proposal. The three-hour meetings begin at 9:30 a.m. at the St. Anthony Main Event Centre, 219 S.F. Main St.

'Real opportunity'

The feasibility study, to be completed by this summer, will evaluate the need and potential financing for a Mississippi whitewater park. It also will consider options for course design and related infrastructure.

The proposal likely will be for a channel of up to 2,000 feet that would take advantage of the natural 25-foot drop in the lower falls, said Michael McDonough, the DNR's water recreation program coordinator.

Water flow into the 40-foot-wide course would be controlled by a headgate, so that water levels could be changed to accommodate different skill levels and events.

Supporters of the ambitious whitewater park proposal hope that schoolchildren and families will one day paddle rafts down the course, learning about water safety and Minneapolis history. They say the course also

could play host to world-class races and corporate adventure tours.

Anderson, the architect hired by the DNR, said downtown Minneapolis is the "right market" for an urban whitewater park.

"Typically the sport is practiced out in the woods or in geographically constrained areas," he said in a telephone interview. "This is a real opportunity to get this sport — that you may not find in cities — real exposure."

In addition to the whitewater course, organizers hope to develop a riverfront recreational area that includes bike paths, a rock-climbing area and a fishing pier.

Anderson predicted that 90 percent of visitors to the whitewater park would never get in the water, but would be exposed to the parking sports as they walked, jugged or picnicked in the area.

Development barriers

Even the park's most ardent supporters acknowledge major challenges in developing a course near downtown Minneapolis.

For starters, it is unclear who would pay for and operate the park. The course alone would cost at least \$5 million to build, Tilton said, not counting access roads and landscaping.

The DNR likely would not have a financing role unless the agency receives more funds from the Legislature, said McDonough, coordinator of the feasibility study.

While the whitewater park idea doesn't conflict with the city of Minneapolis' vision for riverfront

development, it is not specifically mentioned in any development plan, said Ann Calvert, who handles riverfront planning for the Minneapolis Community Development Agency.

The MCDA likely would be involved in financing only if it were to do some type of private business loan, Calvert said.

The DNR's feasibility study will analyze financing options ranging from a public facility — run by the park board or university — to a privately developed project, Anderson said.

"We'll present the alternatives, and hang them on the wall and shoot at them a little bit," he said.

Other interests

It also is unclear how the proposal fits in with the plans of the area's major power users.

For example, Northern States Power Co., which maintains the lower falls — wants to reserve the right to rebuild the hydropower plant that collapsed at the site more than a decade ago, spokesman John Pacheco said.

"We're actually excited about the feasibility study," Pacheco said. "It's a wonderful concept, but we need to know what the nuts and bolts are" to understand how the whitewater park would work and be integrated into the riverfront.

NSP recently completed a study on developing a \$3.6 million park spanning the area from the historic upper to lower falls. NSP's plan does not exclude the possibility of a whitewater course, but it doesn't indicate that the utility would have any role in building one.

Meanwhile, the university — the

primary land owner in the area — is renovating its steam plant and building a nearby coal shed that would restrict access to the site.

"We anticipate that the university's plans are supposed to dovetail with a park on the riverfront," Tilton said.

The university shares the goal of developing safe and aesthetic riverfront amenities for its students and the community, said Harvey Turner, director of planning and programming.

Turner said the DNR's feasibility study will need to address engineering issues, particularly in terms of access to the proposed whitewater park site.

South Bend park

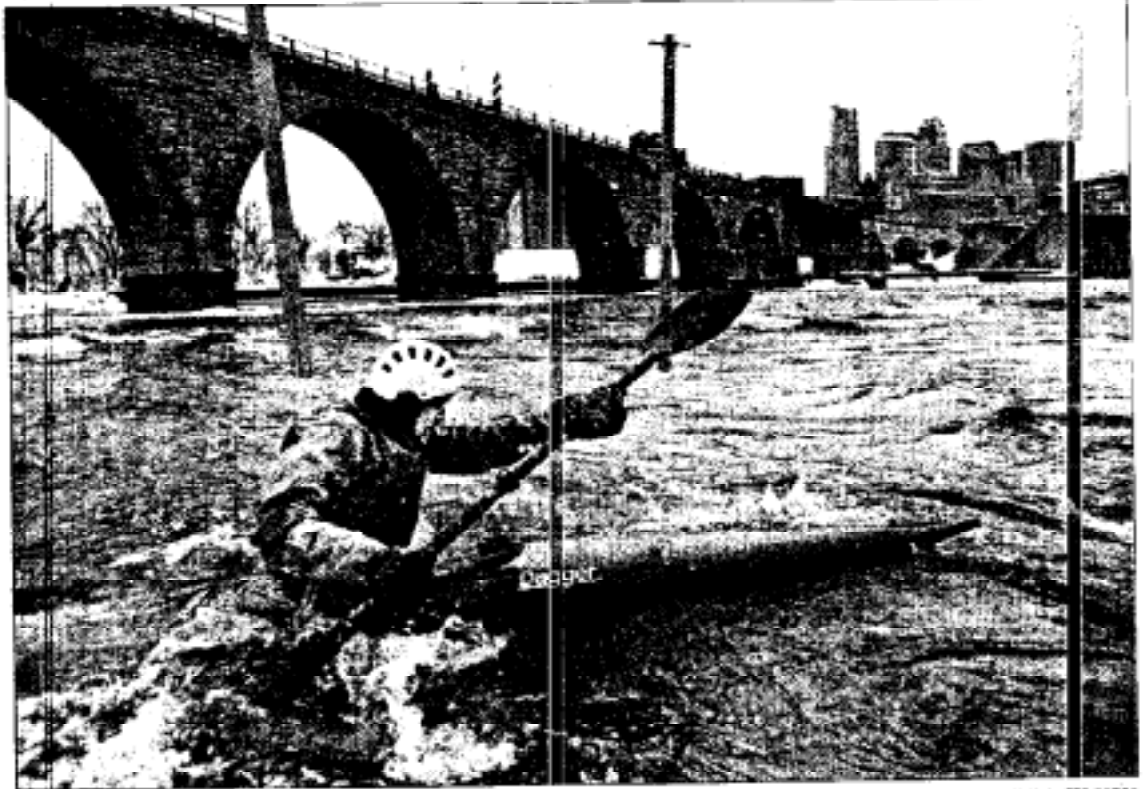
Whitewater supporters hope to capitalize on surging interest in outdoor recreation. The market for outdoor sport products was \$1.58 billion in 1997, according to the Florida-based Sporting Goods Manufacturers Association.

The local organizers hope to replicate urban whitewater parks such as the \$4.5 million East Face Waterway in South Bend, Ind.

That course — on the St. Joseph River near the downtown area — was built by the city of 100,000 in 1984 to spur economic development. Operated by the South Bend Parks and Recreation Department, the waterway draws about 14,000 people a year, administrative director Betsy Herriman said.

Most visitors pay \$2 to paddle rafts down the 2,100-foot course.

"We lose money on the operation. It's a goodwill thing," Herriman said.



JOE ROSS/PHONER PRESS

Doug Demask, 32, passes through a gate on the slalom course near the Stone Arch Bridge in Minneapolis. The Woodbury man works out nearly every day on the Mississippi River as he trains in hopes of becoming part of the U.S. white-water slalom team. Others share his passion: There's a movement under way to get a white-water paddling sport park on the river.

Rafting and kayaking enthusiasts may one day have the chance to pursue their sports in a specially designed \$3 million white-water park near downtown Minneapolis.

In Search of a Bumpy Ride

Investing in Whitewater may have been risky for President Clinton, but white-water development makes perfect sense to some river enthusiasts in Minneapolis.

Using a \$100,000 appropriation from the Legislature, the Mississippi Whitewater Park Development Corp. is working with a design firm to prove an urban stretch of the Mississippi River would be perfect for shooting the rapids.

"Some people have the question mark about how it would get done, but no one thinks it is not a great idea," said George R. Dunn, a St. Paul attorney, water sports enthusiast and member of the board of the organization pushing for a Minneapolis white-water park.

The park, which would cost between \$2 million and \$3 million to build, would run along the east bank of

BY RACHEL STASSEN-BERGER

STAFF WRITER

People are invited to participate in public meetings Friday and Saturday from 9:30 a.m. to 12:30 p.m. at the Event Center, 219 Main Street, Minneapolis.

PARK CONTINUED ON 9D ▶

PARK

▼ CONTINUED FROM 1D

the Mississippi near the lower St. Anthony Falls area, near Interstate 35W and the Stone Arch bridges. That would let water enthusiasts and novices alike enjoy rafting, kayaking and racing just moments from the hustle and bustle of downtown.

The course, between 1,500 and 2,500 feet long and 40 feet wide, would be dug along the east bank of the river just downstream from the Stone Arch Bridge. Building the park would involve providing better access to the river at that point, placing obstacles in the waterway to create rapids and building means for controlling water flow.

Backers say they expect 30,000 to 50,000 users a year.

The Minneapolis City Council and the Hennepin County commissioners unanimously endorsed the plan. Several neighborhood organizations and business associations support the plan. Even the U.S. Army Corp of Engineers finds it pretty much acceptable.

"From what we've been exposed to it doesn't look bad to us," said Dennis Cin, of the construction and operations department of the Corps' St. Paul district. Cin's only concern is for the Corps' \$1 million containment facility, which sits under the 35W bridge and

might be in the way of some of the development plans.

Officials at Northern States Power Co., which owns the existing St. Anthony Falls Dam and the adjacent land near the proposed course, have said the company might still be interested in building a hydroelectric plant on the land.

"Can it be built and will it work? Absolutely. Can we get all the parties to agree? Maybe," said Michael McDonough, Water Recreation Program coordinator for the Minnesota Department of Natural Resources.

Cin and others with questions about the project have a chance to speak at public meetings Friday and Saturday. Although plans for the white-water park have been floating around for several years, the meeting will be among the first opportunities for open participation.

The course would be designed so those of all experience levels could raft or kayak it. Operators would be able to control the water flow along the route, adjusting it from fast-flowing Olympic caliber to milder family friendly speeds.

The white-water park cannot surmount some other obstacles. Winter, for instance.

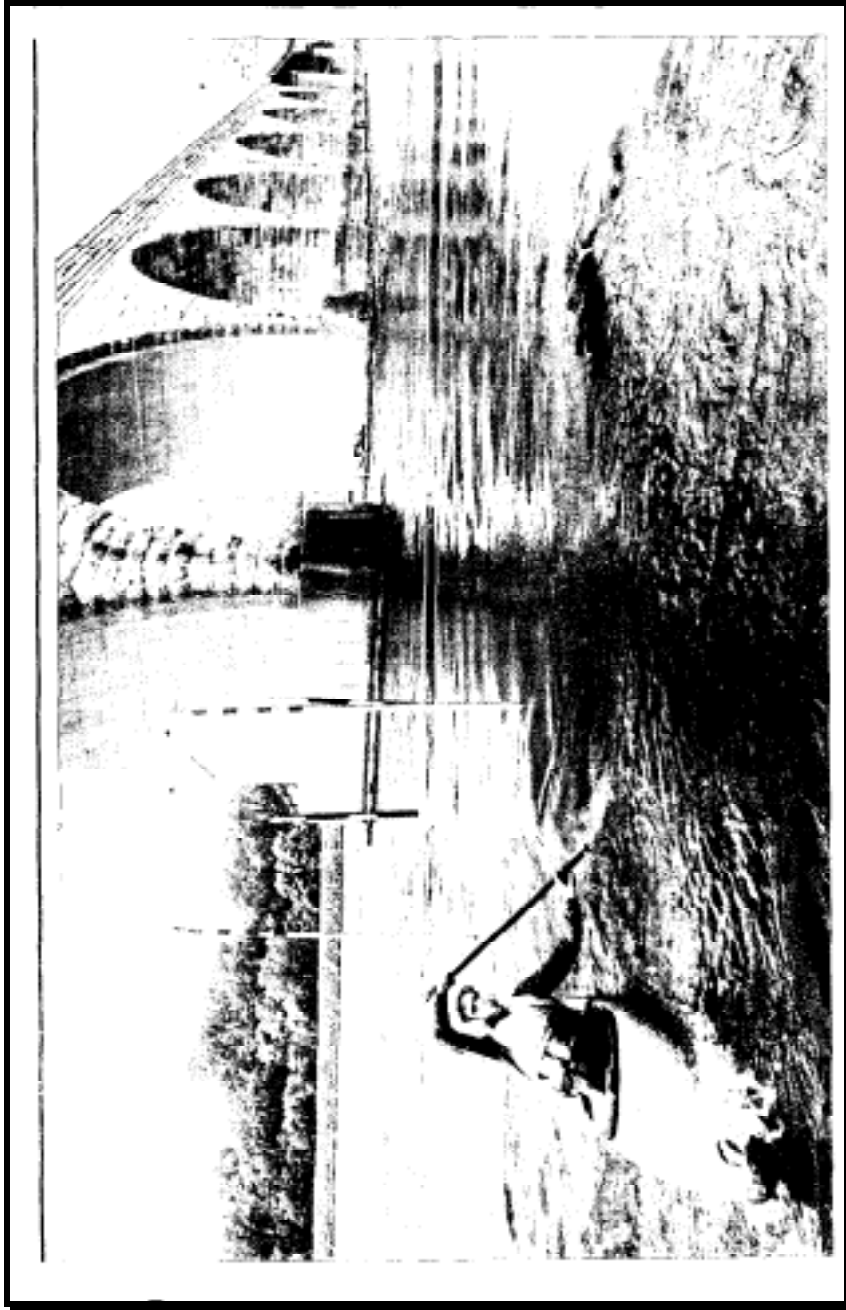
Although kayak enthusiast Doug Demask took his craft onto the river by St. Anthony Falls Wednesday, with the air temperature just above zero, the proposed park would get the most use in the spring and early summer, when temperatures and water levels are high.

"I think it's a great idea," said the ice-encrusted, sweating Demask upon reaching dry land.

Rachel E. Stassen-Berger, who covers Minneapolis news, can be reached at rstassen-berger@pioneerpress.com or (612) 338-8198.

FYI

For more information, call **George R. Dunn** of the **Mississippi Whitewater Park Development Corporation** at (651) 224-7687, or **Michael McDonough** of the **Department of Natural Resources** at (651) 297-2798.



White-water park plan to brave the rapids

Kayakers are among those pushing for a Twin Cities white-water park to be built on the Mississippi River, and on Sunday some of them showed off their sport. Stilet races for kayaks and canoes were held under the Stone Arch Bridge near St. Anthony Main in Minneapolis, where the Mississippi Whitewater Park Development Corp. wants the park built. The Minnesota Legislature earmarked \$100,000 last year to study such a park.

Northern States Power is re-applying for a federal license for its upriver hydroelectric station at the site.

The utility has planned some improvements, likely to include new gairdard, "when the economics are right," says Jack Scuda of NSP. "We aren't opposed to a white-water park or anything else as long as it doesn't preclude building down there in the future," he says.

**PHOTOS BY
SCOTT GOHL**

PIONEER PRESS

Proponents say river water could be channeled into a park and controlled to accommodate boaters' skill levels. Backers also envision bike paths, walkways and landscaping to complement the Stone Arch Bridge.

—TIM NELSON STAFF WRITER



TOP PHOTO: David Fawcett struggles to maneuver his kayak through the 12th gate of the race course Sunday below the Stone Arch Bridge. The races were part of the third annual Stone Arch Festival of the Arts.

LEFT: Laura Eggert paddles upstream to get through the race course's 10th gate. Treading clinics were held on Saturday, and stilet races on Sunday.

**Appendix 3-1
General Paddle Sports and Outdoor Recreation Market Segments**

	General Paddle Sports Market	Outdoor Recreation Market Segments						
		Sports Hogs	Stream Fishermen	Avid Outdoorsmen	Nature Lovers	Fitness Buffs	Passive Viewers	Virtually Inactives
Paddle Sports Participation								
Total Number (in millions)	31.96	11.67	3.31	8.16	3.13	4.37	1.22	0.1
Canoeing	14.08	4.55	1.69	3.89	1.61	1.93	0.4	0.01
Kayaking	2.63	0.97	0.23	0.53	0.33	0.45	0.12	0
Floating and Rafting	15.25	6.15	1.39	3.74	1.19	1.99	0.7	0.09
Demographic Profiles								
Age group								
16-24	21.6%	45.2%	11.5%	17.4%	7.2%	22.1%	17.4%	10.30%
25-39	39.3%	43.0%	44.7%	35.3%	29.8%	47.5%	31.7%	19.90%
40-54	23.0%	10.3%	28.8%	25.2%	33.8%	21.8%	23.0%	19.40%
Over 54	16.1%	1.5%	14.9%	22.2%	29.1%	8.7%	27.9%	50.40%
Race								
White	87.7%	87.7%	94.0%	87.6%	87.5%	88.8%	76.5%	73.90%
Other	12.3%	12.3%	6.0%	12.4%	12.5%	11.2%	23.5%	26.10%
Gender								
Female	45.4%	33.0%	41.5%	35.2%	66.3%	53.0%	56.7%	60.40%
Male	54.6%	67.0%	58.5%	64.8%	33.7%	47.0%	43.3%	39.60%
Household Income								
<\$15,000	7.3%	5.8%	5.4%	8.6%	7.4%	6.5%	11.2%	27.20%
\$15,000-24,999	14.2%	12.8%	11.0%	19.0%	13.0%	11.7%	19.3%	23.30%
\$25,000-49,999	39.7%	37.3%	41.0%	43.4%	39.7%	37.5%	40.0%	30.60%
\$50,000-74,999	22.3%	25.7%	25.8%	17.5%	21.2%	23.9%	17.0%	11.90%
\$75,000+	16.4%	18.5%	16.8%	11.6%	18.7%	20.3%	12.5%	7.10%
Educational Attainment								
Some High School	11.0%	20.6%	6.7%	11.6%	3.7%	7.6%	11.0%	23.20%
High School	27.5%	25.4%	26.8%	38.6%	22.0%	19.1%	31.4%	36.50%
Some College or Trade School	30.2%	29.3%	33.4%	28.2%	29.7%	31.5%	28.9%	22.50%
College	31.2%	24.7%	33.1%	20.7%	44.5%	41.8%	28.7%	17.90%
Number of Household Vehicles								
None	2.2%	2.2%	1.1%	1.3%	2.4%	2.1%	4.9%	11.10%
One	19.1%	13.3%	15.3%	18.1%	23.9%	20.8%	29.7%	37.30%
Two	43.2%	39.7%	42.0%	46.9%	46.2%	45.3%	40.3%	32.40%
Three or more	35.6%	44.8%	41.6%	33.8%	27.6%	31.8%	25.1%	19.30%

Source: Emerging Markets for Outdoor Recreation in the Sunbelt, USDA, 1997.
 Notes: Market Segment titles have been adapted from Emerging Markets report. They convey the same ideas in a more understated manner.
 General paddle sports market percentages are proportionally distributed from all market segments based on participation.

**Appendix 3-2
 Characteristics of Paddle Sports Enthusiasts by Watercraft Category**

	Total	Canoeing	Kayaking	Floating and Rafting
Total Number (in millions)	7.8	3.6	0.4	3.8
Age group				
16-24	32.0%	27.6%	22.5%	37.1%
25-29	15.2%	9.3%	21.6%	20.1%
30-39	24.3%	24.0%	33.0%	23.6%
40-49	14.0%	16.1%	16.7%	11.8%
50-59	8.2%	13.5%	0.1%	4.0%
Over 60	6.4%	9.6%	6.1%	3.5%
Race				
Black	2.0%	0.9%	0.0%	3.2%
White	94.5%	96.4%	98.0%	92.4%
Other	3.5%	2.7%	2.0%	4.4%
Gender				
Female	41.8%	35.6%	21.2%	49.8%
Male	58.2%	64.4%	78.8%	50.2%
Household Income				
<\$15,000	5.1%	5.2%	5.3%	4.9%
\$15,000-24,999	10.7%	11.2%	8.9%	10.4%
\$25,000-49,999	36.8%	32.7%	42.5%	40.1%
\$50,000-74,999	29.7%	30.4%	38.4%	28.2%
\$75,000-99,999	11.1%	13.1%	0.7%	10.2%
\$100,000 +	6.7%	7.4%	4.2%	6.3%
Educational Attainment				
Some High School	15.2%	12.6%	13.2%	17.8%
High School	24.6%	23.9%	5.8%	27.3%
Some College or Trade School	20.1%	26.7%	19.2%	28.8%
College	32.9%	36.9%	61.8%	26.1%
Number of Household Vehicles				
None	1.8%	1.3%	6.7%	1.8%
One	16.9%	17.7%	24.5%	15.3%
Two	37.0%	37.2%	37.8%	36.8%
Three or more	44.3%	43.7%	31.1%	46.2%

Source: Emerging Markets for Outdoor Recreation in the SGMA and USAs, 1997.

Note: Total percentage is derived from proportional distribution of all three paddle sport categories.

A paddle sports enthusiast is defined as an individual who spends at least five full days on the water each year.

It was possible for an individual to indicate participation in more than one kind of paddle sport.

Appendix 3-3
Whitewater Venue Profiles

**Parc Olympic del Segre
LE SEU D'URGELL, SPAIN**

Built: 1992 for Olympic Games
 Original cost of construction: 1 billion pesetas, (\$8,701,705)
 Owner: La Seu d'Urgell
 Operator: La Seu d'Urgell

Recreational Season: May-August high season, but open year round
 Recreational Attendance 1998: 60,000, up from approximately 40,000 in 1997
 General admission: Entrance is free
 Canoeing with equipment 1,300 pesetas (\$9.20) per hour
 Rafting with equipment, guide and minimum of 6 people
 Half hour 3,500 pesetas (\$24.60) per person
 Full hour 4,500 pesetas (\$31.70) per person
 Total recreational season staff: 10, 50 during high season

Competitive Season: all year long
 Training lease: 60,000 pesetas (\$421) per day for events or training

1998 Competitions:

Event	Attendance
1998 Slalom World Cup Finals	4,000
World Cup Qualifier (soccer)	5,000
Spanish Championships (soccer)	5,000

Equipment rental on site: Yes

Complimentary businesses on site:

Business Name	Good/Service
	Park, fitness trails
	soccer stadium, holds 5,000
	Hydrostatic balloon rides
	restaurant-bar

Gross Annual Revenue 1998: 142,150,000 pesatas (\$1,000,000)

Annual Operating Expenses 1998: 138,150,000 pesatas (\$971,861)

**White Water Canoe Slalom Course at the National Watersports Centre
NOTTINGHAM, UK**

Built: 1986
 Original cost of construction: £2.25 million (\$3,335,625)
 Owner: Nottingham County owns land, English Sports Council owns facilities
 Operator: English Sports Council, funded by UK Department of National Heritage
 Recreational Season: April - October
 Recreational Attendance 1998: roughly 100,000 (not all are paying course users)
 General admission: Entrance to complex is free
 8-person raft with equipment and guide, £85.00 (\$141.30)
 4-person raft with equipment and guide, £55.00 (\$91.50)
 Private boat launch for 4 hours, £6.00 for adults (\$10.00), £3.50 (\$5.80) for youth
 Private boat launch annual pass, £130.00 (\$216.20)
 Total recreational season staff: 10 FTE
 Competitive Season: all year long
 Training: British National Team trains here for a nominal fee

Competitions:

Event	Attendance
19 different local and national events in 1998	marginal, events are not a big draw

Equipment rental on site: Yes

Complimentary businesses on site:

Business Name	Good/Service
Main Centre	conference facility, lodging, restaurant, lounge/bar
Lilleshall Human Performance Centre annex	sports halls, sports medicine and science research and education, and offices
Caravan park and Campsite	park, swimming pool, nature reserve, children's play area
Site Shop	convenience goods and services for campers
Waterside Lodge Cafe	bicycle rental, light fare food
Regatta Lake	flatwater racing, fishing and natural beauty
Water Ski Lagoon	waterskiing and natural beauty

Gross Annual Revenue 1996: £163,000 (\$271,036)
 Annual Operating Expenses 1998: N/A

**East Race Waterway
SOUTH BEND, INDIANA, USA**

Built: 1984
 Original cost of construction: \$4.5 million
 Owner: City of South Bend, Indiana Parks and Recreation Department
 Operator: City of South Bend, Indiana Parks and Recreation Department

Recreational Season: June - August for about 15 hours per week
 Recreational Attendance 1997: 14,178
 General admission: Rafters may pay \$2 for each run. Canoe/Kayakers may pay \$3 for two hours on weekdays, \$6 for five hours on weekends, or buy a \$10 pass for six rides.

Total recreational season staff: 17-21

Competitive Season: all year long, but only fifteen hours a week
 Training leases: two junior teams train for free but must provide own liability insurance and operators

Competitions:

Event	Attendance
1998 National Junior, Senior and Masters Champs	1,250
1997 East Race Kayak Races	1,000

Equipment rental on site: Yes

Complimentary businesses on site:

Business Name	Good/Service
Sites Park	playground and picnic area connected to extensive public parkway system
East Raceway Concessions	light fare foods
Concert Series	after hours live band concerts on site (3,000 attendees in 1998 to 10 gigs)

Gross Annual Revenue 1998: \$10,179.00
Annual Operating Expenses 1998: \$80,868.26

**Wausau Whitewater Course
WAUSAU, WISCONSIN, USA**

Built: 1974
Original cost of construction: \$500,000
Owner: Course traverses property owned by several entities: Wisconsin Public Service, Wausau-Mosinee Papers, Marathon County, Wausau Development Authority, VFW Central Wisconsin Railroad and Wisconsin Valley Improvement.
Operator: Wausau Kayak/Canoe Corp., a non-profit; the lynchpin for existence of the course
Recreational Season: none, open for recreational use a total of 15 hours annually
Recreational Attendance 1998: 120
General admission: \$37.50, \$25 for ACA members
Total recreational season staff: 0, volunteers operate the course upon request/availability
Competitive Season: year round by appointment
Training leases: none; \$40/hour for the cost of water release
Competitions:

Event	Attendance
Slalom World Cup 4	4,000
Whitewater Rodeo	2,000
US Team Trials	700
WACKO (local citizen race)	150

Equipment rental on site: only during training camps
Complimentary businesses on site: none
Gross Annual Revenue 1997: about \$60,000
Annual Operating Expenses 1997: about \$60,000

**Eiskanal
AUGSBURG, GERMANY**

Built: 1971 for Olympic Games
 Original cost of construction: 1.6 million DM (\$3,269,000)
 Owner: City of Augsburg
 Operator: City of Augsburg

Recreational Season: April - October
 Recreational Attendance 1998: 46,000
 General admission:

Pass	Adult	Youth
Day pass	DM 22,00 (\$13.20)	DM 11,00 (\$6.60)
Half day pass	DM 11,00 (\$6.60)	DM 6,00 (\$3.60)
Season pass	DM 200,00 (\$120.00)	DM 100,00 (\$60.00)

Total recreational season staff: 8

Competitive Season:
 Training leases: national team, safety and rescue school, armed forces
 1998 Competitions:

Event	Attendance
1998 Slalom World Cup 3	N/A
1999 Ducky Fundraiser	20,000

Equipment rental on site: no
 Complimentary businesses on site:

Business Name	Good/Service
	restaurant
	park
	2 clubhouses

Gross Annual Revenue 1998: N/A
 Annual Operating Expenses 1998: N/A

**Ocoee River Course
DUCKTOWN, TENNESSEE, USA**

Built: 1995 for Olympic Games
 Original cost of construction: \$4 million for course (\$13 million for entire venue)
 Owner: United States Department of Agriculture, Forest Service; Tennessee Valley Authority owns water flow
 Operator: Tennessee Department of Parks and Recreation

Recreational Season: 15 days
 Recreational Attendance 1998: 26,738
 General admission: \$3 (for parking)
 Total recreational season staff: 5 staff, 3 FTE volunteers

Competitive Season: 10 days
 Training leases: none
 Competitions*:

Event	Attendance
1998 Ocoee Double Header	275
1998 Ocoee Rodeo	1,100

Equipment rental on site: No
 Complimentary businesses on site:

Business Name	Good/Service
Ocoee Whitewater Center	welcome center, gift store
	concession stand

Gross Annual Revenue 1998: \$48,218
 Annual Operating Expenses 1998: \$52,429

* 42,000 visitors during three days of 1996 Olympics.

Note:

The exchange rates used to convert costs into dollars are certified by the Federal Reserve Bank of New York for both the year of original construction and for 1998.

**Appendix 3-4
Profiles of Selected Community Centers with Water Facilities**

Shoreview Community Water Park

Built: 1990
 Original cost of construction: \$10 million
 Owner: City of Shoreview
 Operator: City of Shoreview

Recreational Season: year round (indoor facility)
 Recreational Attendance: 500,000
 General admission: \$6
 Total recreational season staff: 50

Special Events	Attendance
over 100 special events annually	N/A

Equipment rental on site: equipment may be borrowed for free
 Complimentary businesses on site:

Business Name	Good/Service
Blue Wave Snack Bar	concessions

Gross Annual Revenue 1997: 2 million
 Annual Operating Expenses: \$1.2 million

**Shoreview Community Center admits adults for \$6 each day, but an would pay \$15 for daily admission.

St. Louis Park Water Park

Built: 1997
 Original cost of construction: \$30 million
 Owner: City of St. Louis Park
 Operator: City of St. Louis Park

Recreational Season: Memorial Day to Labor Day (June-August)
 Recreational Attendance: 149,900
 General admission: \$6
 Total staff: 50 FTE

Special Events	Attendance
Senior Poolside Dinner	150
Senior Poolside Sale	150
2 Teen nights	80 total

Equipment rental on site: equipment loaned free
 Complimentary businesses on site:

Business Name	Good/Service
no name	concessions

Gross Annual Revenue 1996: \$20,000
 Annual Operating Expenses: \$40,900

Chaska Community Center

Built: 1990
 Original cost of construction: \$5.1 million
 Owner: City
 Operator: City

Recreational Season: year round (indoor facility)
 Recreational Attendance: 35,900/month plus members
 General admission: \$2.25 - \$4.50
 Total staff: 13 FT 50+PT

Special Events	Attendance
Numerous	N/A

Equipment rental on site: N/A
 Complimentary businesses on site:

Business Name	Good/Service
	2 ice rinks, 2 gymnasiums, day care, cafe, dance studio, theatre, pool is a tiny part

Gross Annual Revenue 1998: \$1 million
 Annual Operating Expenses: \$1.09 million

Appendix 3-5
Inventory of Natural Whitewater Venues in Minnesota

River	Reach/Venue	County	Miles	Class
Baptism	MN Route 1 to Superior NF Campground	Lake	6.5	III-IV
Baptism	Superior NF Campground to Lake Superior	Lake	4.5	III-VI
Big Fork	Route 14 Harrison Landing Campground	Itasca/Koochiching	15	I-II
Brule	Wons Creek to Lake Superior	Cook	6	II-VI
Cloquet	US Route 53 to US Route 2	St. Louis	11	I-II
Kettle	Hyw 23 Bridge to Sandstone	Pine	5	III-IV
Kettle	below Big Eddy to St. Croix R.	Pine	5	II-III
Kettle	Co. Road 4 near Kettle Lake to Moose Lake	Carlton/Pine	20	I-II
Little Fork	Co. Route 73 to Route 217	Koochiching	15	II-III
Little Fork	State Route 73 to Route 65	Koochiching/Itasca	30	II-IV
Snake	McGrath-Aitkin Co. Campground to Fond du Lac	Aitkin/Kanabec	2	II-III
Snake	Township Road (East of Woodland) to Mooka	Aitkin/Kanabec	28	II
Snake	Cross Lake to confluence with S. Croix R.	Pine	12	I-II
St. Croix	Nelson Landing Route F (Norway Point R. State Park) to Route 8	St. Croix/Soderbeck	10	I-II
St. Croix	Taylor's Falls (Snake R)	Chisago	1	II-IV
St. Louis	MN Route 210/Thomson Res. to Fond du Lac Res.	Carlton	5	II-VI
St. Louis	Route 53 to Cloquet Route 33	St. Louis	85	I-II
St. Louis	Hwy 61 (West of Duluth) to Thompson	Carlton	3	II-IV
Temperance	Sawbill Trail 7.5 mi to MN Route 166 mi to Route 343 or 61 (class I-VI)	Cook	16.5	I-VI
Vermillion	Vermillion Dam 15 mi. to Hwy 24 (class I-IV), mi. to Crane Lake (class III-VI)	St. Louis	24 39	III-VI

Sources: American Whitewater Affiliation: Bob and Judy Palzer Quietwater: The Wild Rivers of Wisconsin, Upper Michigan, and Northern Minnesota Department of Natural Resources: Gathering of Waters Thomas F. Waters: Streams & Rivers of Minnesota 1980; Menasha Ridge Press: Complete Whitewater Soand Superior Whitewater.

Appendix 3-6 Direct Expenditure Estimation Methodology

Method 1

N	=	national rafting participation
	=	15,250,000, from <i>Emerging Markets</i>
N'	=	national kayaking participation
	=	2,630,000, from <i>Emerging Markets</i>
r	=	ratio of rafting to kayaking participation
	=	N / N'
	=	$15,250,000 / 2,630,000$
	=	5.8
R	=	estimated annual rafting visitors
	=	95,390 average of 15 rivers highlighted in University of Colorado at Boulder, America Outdoors Rafting Study, 1998.
K	=	estimated annual kayaking visitors
	=	R/r
	=	$95,390 / 5.8$
	=	16,447
V	=	estimated total annual visitors
	=	$R+K$
	=	$95,390 + 16,447$
	=	111,837
Z	=	percentage of out-of-state recreation visitors to Minneapolis
	=	20%, modified from Minnesota Amateur Sports Association (MASC)/ University of Minnesota Duluth's Kayak & Canoe Institute (KCI) data ¹

¹The data from MASC/KCI has been conservatively modified from 54% to 80% in-state v the proposed park s location inside a metropolitan region. The park s proximity to would likely increase the percentage of local, and therefore in-state, visitors.

X	=	estimated annual out-of-state paddling visitors to proposed whitewater park.
	=	$V * Z$
	=	$111,837 * 20\%$
	=	22,367
X'	=	estimated annual in-state paddling visitors to proposed whitewater park.
	=	$V - X$
	=	$111,837 - 22,367$
	=	89,470
A	=	daily out-of state visitor spending (visitors staying with friends or relatives)
	=	\$24, from Minnesota Office of Tourism, <i>Spring/Summer Survey</i> , 1998.
A'	=	daily out-of state visitor spending (visitors staying in lodging establishments)
	=	\$57, from Minnesota Office of Tourism, <i>Spring/Summer Survey</i> , 1998.
A''	=	daily in-state visitor spending
	=	\$10, reduced from Minnesota Office of Tourism, <i>Spring/Summer Survey</i> , 1998 due to urban location.
S	=	direct annual visitor spending
	=	$(AX + A'X + A''X')$
	=	$(\$24 * 50\% * 22,367) + (\$57 * 50\% * 22,367) + (\$10 * 89,470)$
	=	1,800,564
F	=	estimated user fee
	=	\$12
C	=	annual visitor user fee revenue
	=	$V * F$
	=	$111,837 * \$12$
	=	\$1,342,044
T	=	estimated total annual direct visitor spending and user fees
	=	$S + C$
	=	$\$1,800,564 + \$1,342,044$
	=	\$3,142,608

Method 2

V	=	estimated daily visitors to whitewater park
	=	205, the median daily average of visitors to whitewater parks in Appendix 3-3 ²
Z	=	percentage of visitors from out-of-state
	=	20%, modified from MASC/KCI data
X	=	estimated average of daily out-of-state visitors
	=	$V * Z$
	=	$205 * 20\%$
	=	41
X'	=	estimated average of daily in-state visitors
	=	$V - X$
	=	$205 - 41$
	=	164
D	=	days the whitewater park would be operative, spring thaw to autumn freeze
	=	$32 \text{ weeks} * 7$
	=	224
A	=	daily out-of state visitor spending (visitors staying with friends or relatives)
	=	\$24, from Minnesota Office of Tourism, <i>Spring/Summer Survey</i> , 1998.
A'	=	daily out-of state visitor spending (visitors staying in lodging establishments)
	=	\$57, from Minnesota Office of Tourism, <i>Spring/Summer Survey</i> , 1998.
A''	=	daily in-state visitor spending
	=	\$10, reduced from Minnesota Office of Tourism, <i>Spring/Summer Survey</i> , 1998 due to urban location.
S	=	direct annual visitor spending
	=	$(AX + A'X + A''X)D$
	=	$[(\$24 * 50\% * 41) + (\$57 * 50\% * 41) + (\$10 * 164)] * 224$
	=	\$739,424
F	=	estimated user fee
	=	\$12
C	=	annual visitor user fee revenue
	=	$V * D * F$

²Median was used rather than average because of outliers in Wausau that skew the average.

$$\begin{aligned}
 &= 205*224*\$12 \\
 &= \$551,040 \\
 T &= \text{estimated total annual direct visitor spending and user fees} \\
 &= S + C \\
 &= \$739,424 + \$551,040 \\
 &= \mathbf{\$1,290,464}
 \end{aligned}$$

Method 3

$$\begin{aligned}
 V &= 1998 \text{ visitors to St. Louis River at KCI} \\
 &= 6,500 \text{ hard boaters} + 5,500 \text{ rafters, boaters from KCI and rafters from} \\
 &\quad \text{Minnesota Canoe Association}^3 \\
 &= 12,000 \\
 Y &= \text{number of days St. Louis River at KCI is usable}^4 \\
 &= 21 \text{ weeks} * 7 \\
 &= 147 \\
 Z &= \text{percentage of out-of-state visitors} \\
 &= 44\%, \text{ from MASC/KCI data}^5
 \end{aligned}$$

³The higher figure for kayaking over rafting is fairly unusual but probably rests on the fact that the St. Louis River is divided into two pools at the Carlton location. The one pool is suitable for kayaking. The other pool is much rougher and water levels are more uncertain, so only occasional canoer (hard boater) will use it. The data for the hard boaters is published. The data for rafters is proprietary and was estimated by MCA. The national ratio of rafters to kayakers at the Carlton site is 0.85.

⁴Though the site is open to the public year-round, water temperatures are extremely low and the site is well as subject to low water levels during drought.

⁵The actual percentage of out-of-state visitors at this site does not need to be adjusted.

X	=	average daily out-of-state visitors per day
	=	VZ/Y
	=	$(12,000 * 44\%)/147$
	=	36
X'	=	average daily in-state visitors
	=	$(V-VZ)/Y$
	=	$(12,000 - (12,000 * 44\%))/147$
	=	46
D	=	days the whitewater park would be operative, spring thaw to autumn freeze
	=	32 weeks * 7
	=	224
A	=	daily out-of-state visitor spending
	=	\$24, from Minnesota Office of Tourism, <i>Spring/Summer Survey</i> , 1998.
A'	=	daily in-state visitor spending
	=	\$10, reduced from Minnesota Office of Tourism, <i>Spring/Summer Survey</i> , 1998 due to urban location.
S	=	direct annual visitor spending
	=	$(AX + A'X')D$
	=	$[(50\% * \$24 * 36) (50\% * \$57 * 36) + (\$10 * 46)] * 224$
	=	\$326,592
F	=	estimated user fee
	=	\$12
C	=	annual visitor user fee revenue
	=	$(X + X') * D * F$
	=	$(36+46)*224*\$12$
	=	\$220,416
T	=	total direct spending
	=	$S + C$
	=	$\$326,592 + \$220,416$
	=	\$650,048

Appendix 4-1

State Limits of Liability

TYPE OF COVERAGE	LIMITS
<i>Automobile Liability</i> _ Owned, Hired & Non- Owned _ Automobile Physical Damage (Comp & Collision) \$500 Deductible	\$300,000 Bodily Injury & Property Damage - per Person/ \$750,000 Bodily Injury & Property Damage - per Occurrence
<i>General Liability</i>	\$300,000 Bodily Injury & Property Damage - per Person/ \$750,000 Bodily Injury & Property Damage - per Occurrence
<i>Workers' Compensation</i>	Statutory

*Tort claim limits will increase to \$300,000 Bodily Injury & Property Damage - per Person, \$1,000,000 Bodily Injury & Property Damage - per Occurrence on January 1, 2000.

STATUTORY REFERENCES

Automobile Liability - Minnesota Statute 65.B Self-Insurance Number is A-1046 as assigned by the MN Department of Commerce

General Liability - Minnesota Statutes 3.732 and 3.736.

Workers' Compensation - Minnesota Statutes Chapter 176 Sections 5401-611

Appendix 4-2

**Waiver form for participation in activities
Department of Natural Resources**

NAME: _____
(Please print)

RELEASE: The undersigned, in consideration of being permitted to participate in the activity entitled _____ for recreational purposes, does hereby irrevocably, personally and for his or her heirs, assigns and legal representatives, release and waive any and all past, present or future claims, demands, and caused of action which the undersigned now has or may in the future have against the State of Minnesota, the Department of Natural Resources, their members, representatives, officers, agents, employees, and each of them, for any and all past, present, or future loss of or damage to property and/or bodily injury, including death, however caused, including negligence, resulting from, or arising out of in any way connected with the aforementioned activity for recreational purposes.

HOLD HARMLESS/INDEMNITY: The undersigned covenants not to cause any action at law or in equity to be brought or permit such to be brought in his or her behalf, either directly or indirectly, on account of loss or damage to property and /or bodily injury, death, against any of the aforesaid parties however caused, including negligence, resulting from, arising out of or in any way connected with the aforementioned activity and agrees to save, indemnify, hold harmless, and defend at his or her sole expense, any and all of the aforesaid parties from any claims, demands and causes of action which now or in the future be asserted against the aforesaid parties arising out of or by reason of said activity described above, including any incident, injury, loss, or damage that might occur at any place in connection therewith. Risks include but are not limited to the following:

Death, fractures, back injuries, head injuries, eye injuries, face injuries, injuries to hands, feet, arms and legs, sprains, contusions, injuries to fingers and toes, abdominal injuries, neck injuries, injuries resulting from punches, blows, and kicks, and injuries from falls and throws and any other injury of any kind.

ASSUMPTION OF RISK: The undersigned further states and affirms that he or she is aware of the fact that the aforesaid activity, even under the safest conditions possible, may be hazardous; that he or she assumes the risks of any and all loss of or damage to property and/or bodily injury, including death, however caused, including negligence, resulting from, arising out of or in any way connected with the aforementioned course; that he or she is of legal age and is competent to sign the Waiver of Claims and Release from Liability; and that he or she has read and understands all of the provisions herein contained.

DATED: _____, 199_____
(If under 18, form must be signed by parent or guardian.)

SIGNED: _____
(Parent or Guardian)

In case of emergency please contact:

1. Name _____ Relationship _____ Phone# _____

Appendix 4-3

Whitewater fatality data compiled by American Whitewater

**Accident Database: Fatal Accident Summary****Inexperienced or Commercial or Raft related reported from 1975 thru 1998**

29-Mar-99

152 Total Fatalities

Lee Belknap

Accident Code and Definition	Number of Fatalities	
100 Victim was trapped under water.	40	
(100 only)	2	
(100 only)		2
110 Victim was trapped under water by equipment.	5	
(110 only)		4
112 Inexperience contributed to victim being trapped under water by equipment.		1
120 Victim was trapped under water by foot entrapment.	6	
(120 only)		6
130 Victim was trapped under water in a pinned boat.	4	
(130 only)		2
131 Victim was trapped under water in a boat pinned in an undercut trap.		1
136 Victim was trapped under water in a boat pinned by rocks, debris (construction materials, abandoned machinery or vehicles, Etc...)		
140 Victim was trapped under water by a Tree.	4	
(140 only)		4
150 A swim resulted in the victim being trapped under water.	19	
(150 only)		6
151 A swim resulted in the victim being trapped in an undercut trap.		4
152 A swim resulted in the victim being trapped by a Tree.		9
200 Accident occurred during a long swim.	54	
(200 only)	28	
(200 only)		28
210 Accident occurred during a long swim during a commercial Trip.	11	
(210 only)		11
220 Victim suffered Hypothermia during and after a long swim.	13	
(220 only)		13
240 Accident occurred during a long swim and suspected complications due to asthma.	2	
(240 only)		2
300 Victim was trapped in a Tac keeper hydraulic.	28	
(300 only)	10	
(300 only)		18
320 Victim was caught in the Hydraulic of a Dam.	18	
(320 only)		18
500 Other Accidents.	28	
520 Accident was officially attributed to a heart attack.	4	
(520 only)		4
530 Victim was not wearing a PFD.	11	
(530 only)		6
531 Victim was a non swimmer and was not wearing a PFD and was not experienced enough to know better.		2
532 Victim was wearing a "horsecollar" type PFD but it fell off.		3
533 Victim was wearing a suitable PFD but it fell off.		1
545 Victim had tied self to boat and became trapped underwater.	1	
(545 only)		1
550 Cause of the accident was unknown.	11	
(550 only)		11
580 Victim suffered a head injury.	1	
581 Victim suffered a head injury while not wearing a helmet.		1
600 Circumstances surrounding the accident seemed to be very unusual.	2	
(600 only)	2	
(600 only)		2

Appendix 4-4

American Canoe Association Event Sanctioning Package



AMERICAN CANOE ASSOCIATION

EVENT SANCTIONING PACKET

- Sanctioning Requirements
- Summary of Insurance Coverage
- Sanctioning Application
- Waiver and Release of Liability

American Canoe Association
Department of Programs & Special Events
7432 Alban Station Blvd., Suite B-232
Springfield, VA 22150

Phone: (703)451-0141
Fax: (703)451-2245
email: acadirect@aol.com
internet: <http://www.aca-paddler.org>



SUMMARY OF INSURANCE COVERAGE

The ACA General Liability Policy is Commercial General Liability Insurance providing coverage for liability imposed by law. The liability must stem from bodily injury to members of the public, or damage to their property, caused by an occurrence.

UNDERWRITTEN BY: St. Paul Fire and Marine Insurance Company

POLICY FORM: Commercial General Liability - Occurrence Form

POLICY TERM: Renewed annually - January 2nd to January 2nd

NAMED INSURED: American Canoe Association and its Member Clubs

ADDITIONAL PROTECTED PERSONS: All volunteers, administrators, officials, and coaches.

ADDITIONAL INSUREDS: As requested and endorsed - including managers, lessors, premises, sponsors, landowners, etc.

COVERED ACTIVITIES: All duly sanctioned events of the insured organizations.

LIMITS OF INSURANCE:

General Total Limit	<u>\$ 5,000,000</u>
Products and Completed Work Total Limit	<u>\$ 5,000,000</u>
Personal Injury Limit Per Person	<u>\$ 1,000,000</u>
Advertising Injury Limit Per Person	<u>\$ 1,000,000</u>
Each Occurrence Limit	<u>\$ 1,000,000</u>
Participant Legal Liability	<u>\$ 1,000,000</u>
Premise Damage Limit (Any one fire)	<u>\$ 100,000</u>
Medical Expenses Limit	<u>\$ 5,000</u>

SANCTIONING REQUIREMENTS

All events sanctioned by the American Canoe Association are covered under the Association's general liability insurance policy. All sanctioning requirements must be met before an event will be considered insured. See the attached "Summary of Insurance Coverage" for details regarding the terms, conditions and limitations of the Commercial General Liability Insurance Policy.

In order to be eligible for ACA sanctioning, an event must be in the interest of the Association and its purposes and meet the following requirements. The ACA reserves the right to deny or cancel sanctioning and insurance status if any of these requirements are not met.

- 1. RISK MANAGEMENT:** The event must comply with all risk management guidelines established by the ACA (See Risk Management Checklist on the application form).
- 2. RULES AND STANDARDS:** If the event is a race or competition, the event must be conducted according to the rules and standards established by the appropriate ACA National Activity Committee. The applicable rules of competition will be sent to you upon receipt of your sanctioning application.
- 3. WAIVERS:** All participants, volunteers, coaches, VIP's, and media personnel must sign a waiver before the event. The waiver form included in this packet is the only acceptable form. Use of an unapproved waiver violates your sanctioning agreement and may jeopardize your insurance coverage.
- 4. MEMBERSHIP:** The official event organizer must be a current ACA Member. Further, all persons participating in the event must also be members of the ACA. These persons may be regular ACA members, Paddle America Members, or Event Members. It is the responsibility of the event organizer to insure that each participant is a current ACA member and signs the approved waiver form. Participants should be asked to show their current ACA membership card as proof of membership. Persons may join or renew their ACA membership at the event site, or may choose to purchase a \$5.00 ACA Event Membership (valid for that single event only). All membership fees and applications collected at the event must be remitted to the ACA by the event organizer, along with the signed waivers for all participants.
- 5. PROMOTION:** The ACA must be prominently recognized as the "sanctioning body" for the event. This recognition should include, at a minimum, display of the ACA banner at the event and use of the ACA name and logo on registration and other promotional materials produced for the event. The ACA will provide a disposable banner and camera-ready logos for use in this regard. The event organizer shall also distribute ACA membership materials and other ACA promotional materials (furnished by the ACA) at the event.
- 6. FEES AND APPLICATIONS:** Sanctioning is contingent upon submitting a properly completed Sanctioning Application (FORM #ESP000), including Risk Management Checklist, to the ACA National Office at least thirty (30) days prior to the event. A \$20 Sanctioning Fee must accompany the application - contact the ACA National Office for information regarding special sanctioning fees for symposia, fund-raisers and other special events. **Applications submitted less than ten (10) days before the event must also include a \$15 late fee.** Within seven (7) days after the event, the event organizer must forward to the ACA National Office a list of all participants, signed waivers, membership applications and fees, and race results (if applicable).

After your Sanctioning Application has been received and approved by the ACA National Office, a letter confirming ACA sanctioning and insurance will be sent to you (usually

within two weeks). In addition to this confirmation, you will receive a packet containing post-event reporting forms, the rules of competition for your event (if applicable) and the aforementioned ACA promotional materials.

Thank you for sanctioning your event with the American Canoe Association.



AMERICAN CANOE ASSOCIATION
SANCTIONING APPLICATION

FORM #ESP000 (revised 12/97)

Event Name: _____

Event Dates: _____ Venue Set Up & Tear Down Dates: _____

Venue (Name of River, Lake, etc.): _____

Nearest Town: _____ State: _____

Event Description: _____

Event Organizer: _____ ACA#: _____
(individual must be an ACA Member)

Address: _____

City: _____ State: _____ Zip: _____

Telephone: _____ Fax: _____

Sponsoring Organization: _____

(organization must be ACA Member)

Type of Organization (check one):

- ACA Club
ACA Affiliate Organization
ACA Division
ACA National Activity Committee
Other (specify):
Open Canoe

Type of Activity (check one):

- Coastal Kayak
Poling
FreeStyle
Recreation/Cruising
Marathon
Sailing
Instruction
Sprint
Slalom/Wildwater
Whitewater

Complete this section if you need a certificate of insurance to show any persons or organizations as additionally insured. Please provide an address or fax number if the certificate should be sent to someone other than the event organizer. You may attach additional lists as necessary.

Date by which certificate must be received: _____

Table with 2 columns: Name, Relationship/Interest

Please remit \$15 for each additionally insured listed.

As the ACA member in charge of this event, acting as an agent of the sponsoring entity, I hereby agree that the event will be conducted in accordance with all ACA requirements for sanctioning, risk management, an all other rules, guidelines and conditions established by the ACA. I have read and I fully understand all sanctioning requirements established by the ACA, and I have personally inspected the event site(s) and I attest to the fact that such site(s) are safe and appropriate for use in this event.

Signature: _____ Date: _____

**Please remit a \$20 Sanctioning Fee (plus \$15 late fee if less than 10 days before the event) with this application to:
American Canoe Association, 7432 Alban Station Blvd., Suite B-226, Springfield, VA 22150
RISK MANAGEMENT CHECKLIST**

The following pre-event checklist is intended to be a practical set of guidelines for a wide variety of events and venues. While many of these safety procedures are required by the ACA's insurance carrier, most of them are simple common sense. In all cases, combining these guidelines with the good judgement of the event organizer will assure a safe and enjoyable event for everyone.

Event Support Team

How many staff and volunteers do you plan to involve: _____

Who is the event Safety Coordinator: _____

Who is responsible for planning and leading emergency procedures: _____

Who is responsible for inspecting the event site for possible hazzards: _____

Who is responsible for coordinating officials and insuring that all rules are followed: _____

Who is responsible for relaying event rules and possible hazzards to participants: _____

Emergency Plans

All event management must be briefed on emergency procedures, both for spectators and participants. Briefing should include procedures to follow in case of medical emergency, including location of medical personnel, emergency evacuation plans, location of communication equipment, etc.

What are your procedures for medical emergencies? _____

Are there emergency vehicles at site? _____

What are your plans for emergency communication? _____

Briefly, what are your plans for emergency evacuation of spectators and participants? _____

Event Site

How many participants are you expecting? _____

How many spectators are you expecting? _____

Are there safety boats, and if so, how many and how will they be used? _____

What provisions are being made for shelter from sun, heat or cold? _____

What provisions are being made for drinking water and toilet facilities? _____

How will you manage spectators? _____



**AMERICAN CANOE ASSOCIATION
WAIVER AND RELEASE OF LIABILITY
(IMPORTANT - READ BEFORE SIGNING!)**

In consideration of being allowed to participate in any way in The American Canoe Association, Inc. athletics/sports program, and related events and activities, the undersigned:

1. Agree that prior to participating, they each will inspect the facilities and equipment to be used, and if they believe anything is unsafe, they will immediately advise their coach or supervisor of such condition(s) and refuse to participate.
2. Acknowledge and fully understand that each participant will be engaging in activities that involve risk of serious injury, including permanent disability and death, and severe social and economic losses which might result not only from their own actions, inactions or negligence, but the actions, inactions or negligence of others, the rules of play, or the condition of the premises or of any equipment used. Further, that there may be other risks not known to us or not reasonably foreseeable at this time.
3. Assume all the foregoing risks and accept personal responsibility for the damages and medical expenses following any such injury, permanent disability or death.
4. Release, waive, discharge and covenant not to sue American Canoe Association, Inc., its affiliated clubs, their respective administrators, directors, agents, coaches, and other employees of the organization, other participants, sponsoring agencies, sponsors, advertisers, and if applicable, owners and leasers of premises used to conduct the event, all of which are hereinafter referred to as "releasees", from any and all liability to each of the undersigned, his or her heirs and next of kin for any and all claims, demands, losses or damages on account of injury, including death or damage to property, caused or alleged to be caused in whole or in part by the negligence of the releasees or otherwise.
5. This waiver may not be modified in any way. If any part of this waiver is determined to be invalid by law, all other parts of this waiver shall remain valid and enforceable.

THE UNDERSIGNED HAVE READ THE ABOVE WAIVER AND RELEASE, UNDERSTAND THAT THEY HAVE GIVEN UP SUBSTANTIAL RIGHTS BY SIGNING IT, AND SIGN IT VOLUNTARILY.

Participant's Name: _____ Signature: _____ Date: _____

Address: _____ City: _____ State: _____ Zip: _____

Date of Birth: _____ ACA #: _____ Club/Organization: _____

[PLEASE PRINT NEATLY.]

revised 4/99



**AMERICAN CANOE ASSOCIATION
WAIVER AND RELEASE OF LIABILITY FOR MINORS
(IMPORTANT - READ BEFORE SIGNING!)**

In consideration of being allowed to participate in any way in The American Canoe Association, Inc. athletics/sports program, and related events and activities, the undersigned:

1. Agree that the parent(s) and/or legal guardian(s) will instruct the minor participant that prior to participating, he or she should inspect the facilities and equipment to be used, and if the participant believes anything is unsafe, he or she should immediately advise his or her coach or supervisor of such condition(s) and refuse to participate.
2. Acknowledge and fully understand that each participant will be engaging in activities that involve risk of serious injury, including permanent disability and death, and severe social and economic losses which might result not only from their own actions, inactions or negligence, but also the actions, inactions or negligence of others, the rules of play, or the condition of the premises or of any equipment used. Further, that there may be other risks not known to us or not reasonably foreseeable at this time.
3. Assume all the foregoing risks and accept personal responsibility for the damages and medical expenses following any such injury, permanent disability or death.
4. Release, waive, discharge and covenant not to sue American Canoe Association, Inc., its affiliated clubs, their respective administrators, directors, agents, coaches, and other employees of the organization, other participants, sponsoring agencies, sponsors, advertisers, and, if applicable, owners and leasers of premises used to conduct the event, all of which are hereinafter referred to as "releasees", from any and all liability to each of the undersigned, his or her heirs and next of kin for any and all claims, demands, losses or damages on account of injury, including death or damage to property, caused or alleged to be caused in whole or in part by the negligence of the releasees or otherwise.
5. This waiver may not be modified in any way. If any part of this waiver is determined to be invalid by law, all other parts of this waiver shall remain valid and enforceable.

I/WE HAVE READ THE ABOVE WAIVER AND RELEASE, UNDERSTAND THAT WE HAVE GIVEN UP SUBSTANTIAL RIGHTS BY SIGNING IT, AND SIGN IT VOLUNTARILY.

Participant's Name: _____ Signature: _____
Date: _____

Address: _____ City: _____ State: _____
Zip: _____

Date of Birth: _____ ACA #: _____ Club/Organization: _____

Name of Parent/Guardian: _____ Signature: _____
Relationship: _____

[PLEASE PRINT NEATLY.]

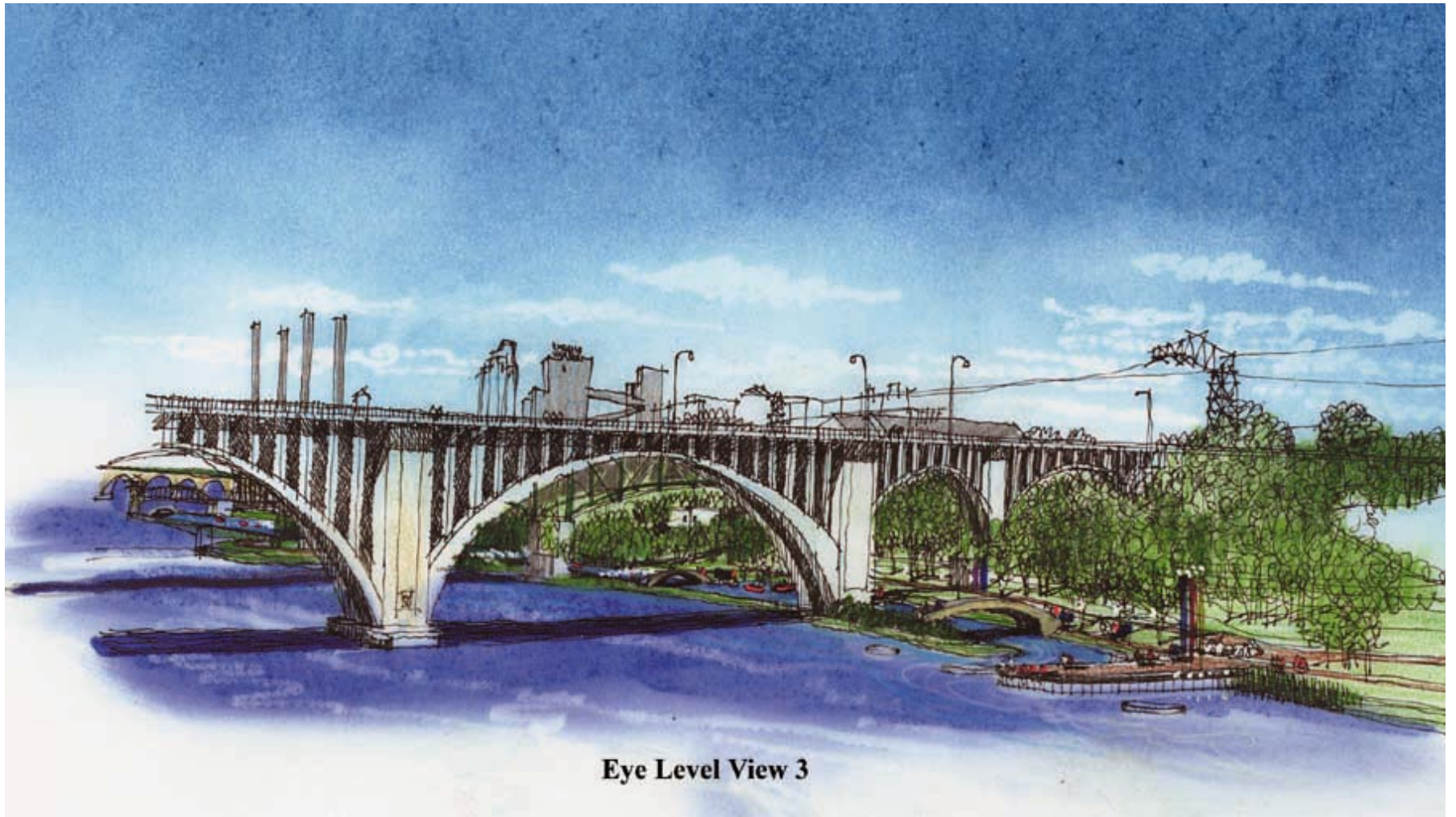
revised 4/99



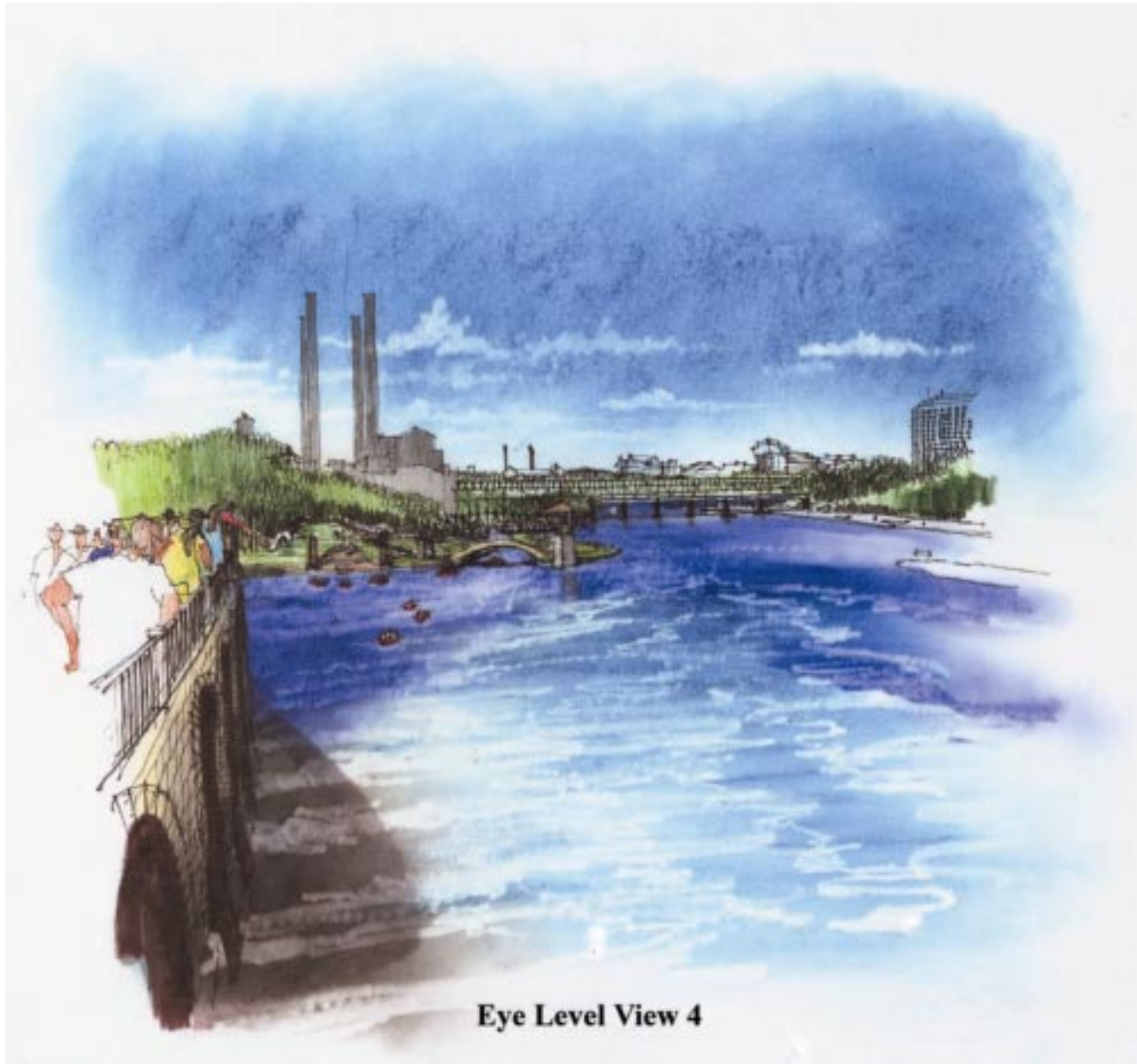
Eye Level View 1



Eye Level View 2



Eye Level View 3



Eye Level View 4



Aerial View 5



Eye Level View 6



Eye Level View 7