



Minnesota Department of Natural Resources 2025 by the Numbers

Mission

Our mission is to work with Minnesotans to conserve and manage the state's natural resources, to provide outdoor recreation opportunities, and to provide for commercial uses of natural resources in a way that creates a sustainable quality of life.

This document is intended to be an overview of select DNR facts and figures. Numbers are rounded and based on the best available information. Timeframes are for calendar year (CY) 2023 or fiscal year (FY) 2023 unless otherwise noted.

Minnesota has...

Approximately 51 million total land acres

17.6 million acres of forests

263,000 acres of native prairie and
6.2 million acres of other grassland

12.2 million acres of wetlands including
6 million acres of peatlands

3.4 million acres of public water lakes
(excluding Lake Superior)

85,000 miles of streams, rivers
and altered water courses

Public Lands and Recreational Facilities Managed by the DNR

The DNR administers over 5.6 million acres of state-owned land, or about 11% of Minnesota's total land area. This includes:

- 60 state forests, covering 4.3 million acres
- More than 1,500 wildlife management areas, covering 1.3 million acres
- 170 scientific and natural areas, covering 193,000 acres
- More than 700 aquatic management areas, covering 48,000 acres
- 64 state parks, 9 state recreation areas and 9 state waysides, covering 240,000 acres
- 1,500 miles of multi-use state trails, over 25,000 miles of grant-in-aid trails, and 3,400 miles of trails within state parks, recreation areas and forests
- 1,700 public water access sites and 390 fishing piers, platforms, and shore-fishing sites
- 12 million acres of mineral estate owned by the State of Minnesota and administered by the DNR

Payment in Lieu of Taxes

- Approximately \$39.7 million was paid to local governments in lieu of property taxes in FY 2023 for 8.5 million acres of state lands. These acres include other state lands in addition to those administered by the DNR.

Agency Operations

- Approximately 3,350 people were employed at a seasonal staffing peak in July 2024, equating to the equivalent of 3,150 full-time employee positions at that time. In addition to this number, the DNR employs approximately 550 smokechasers.
- 2,950 buildings owned or leased across the state
- Over 5,000 pieces of mobile equipment managed, including 3,280 land items, 1,760 watercraft, and 11 aircraft
- More than 94,500 calls and emails handled by the DNR Information Center annually
- Approximately 60 million views of the DNR website by over 11.5 million users annually
- 59% reduction in greenhouse gas emissions by DNR agency operations between 2005 and 2023
- Over 590,000 kilowatt hours of renewable energy generated annually



Fair goes inside the Minnesota Department of Natural Resources building

NUMBERS BY DIVISION

Ecological and Water Resources Division

- 15,350 acres of prairie bank easements administered
- More than 1,200 landowners provided with technical assistance on prairie management annually
- Over 52,700 watercraft inspections for aquatic invasive species completed by DNR staff annually
- Over 7,000 native animals and plants assessed for conservation status updates as part of the Minnesota Biological Survey and nongame wildlife programs
- Over 1,250 groundwater observation wells operated to produce monitoring and trend data
- 479 new water appropriation permits issued, with a total of 10,854 water appropriation permits active in FY 2024
- 543 new work in public waters permits issued, with a total of 3,650 public waters permits active in FY 2024



Daryl Peterson and Ted Koehler at St. Louis River restoration, Grassy Point

Enforcement Division

- Over 51,000 students certified in all-terrain vehicle, snowmobile, boat, bow hunting, and firearms safety annually
- More than 580 interviews conducted with local, statewide, and national media to provide safety information annually
- 25,000 documented contacts with the public through events, citations, warnings, and calls for service in FY 2024
- Over 500 conservation officer visits to schools and community events annually, teaching students and adults about fish, wildlife, and conservation

Fish and Wildlife Division

- Over 60 wildlife game species managed
- 4,400 fishing lakes managed
- Over 4,000 designated trout stream miles managed
- 1,370 lakes and 126 streams stocked with fish in CY 2023
- 240 million walleye fry and 1.8 million walleye fingerlings stocked in CY 2023
- More than 19,000 participants taught about fishing and aquatic education through in-person and online events in CY 2023
- 51 Minnesota outdoor skills and stewardship online education programs hosted annually, with over 10,600 participants reached in FY 2024
- 66 Conservation Partners Legacy grants awarded totaling \$7.7 million in FY 2023

Forestry Division

- 16 million acres monitored in for forest pests and diseases in CY 2023
- 51,000 students engaged annually in outdoor education activities statewide at 160 school forest sites in FY 2024
- Over 160 communities received grants to support urban and community forests and address threats such as emerald ash borer, other insect disease, drought, and other environmental stressors.
- 3.3 million tree seedlings supplied in FY 2024 to public and private landowners for conservation planting and reforestation
- 5 million acres of DNR-managed land maintained with dual third-party forest management certification



Conservation Officers presenting at a recruitment event

- 64 No Child Left Inside grants awarded in FY 2023 totaling \$652,000, with 11,920 participants in funded projects

Licenses

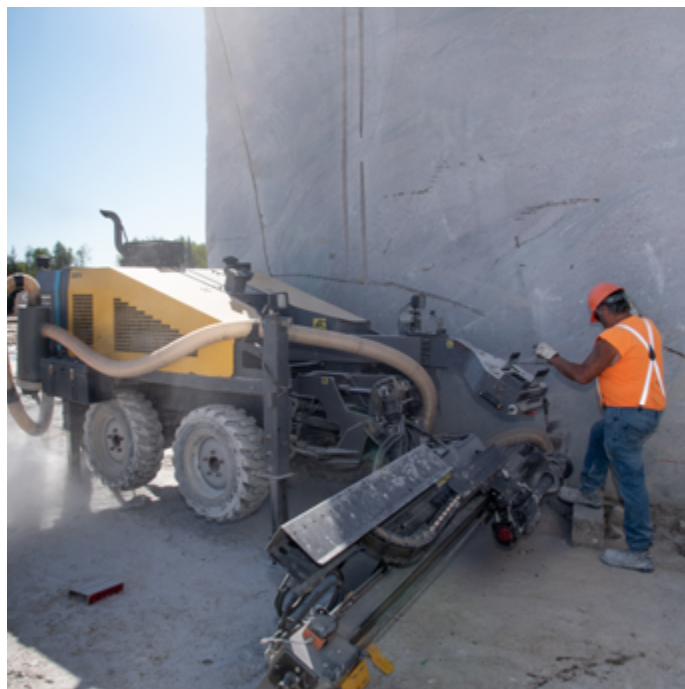
- 1.07 million angling licenses and 827,000 hunting licenses sold in LY 2023
- 6,000 trapping licenses sold in LY 2023
- 110,000 trout stamps sold in LY 2023
- 140,000 wildlife stamps (waterfowl, pheasant and turkey) sold in LY 2023

The DNR state license year begins March 1 and concludes on February 28 (or 29) of the following year. License years are named for the year in which they begin.

- 960 wildfires suppressed (20-year average), limiting the area burned to about 20,800 acres per year
- Average of 23,000 acres naturally reforested and 6,200 acres reforested with seedlings or seeds annually between FY 2019 and 2023
- 359,000 acres of permanent forest conservation easements managed
- Average of 70,000 acres of private land included in forest management plans prepared annually through a network of DNR, county and private consulting foresters
- 2,385 miles of forest roads maintained for access to recreation and forest management activities

Lands and Minerals Division

- 272 active mineral leases managed, including 114 iron ore leases and 158 leases for other valuable minerals
- 28 permits to mine managed, covering almost 150,000 acres. Approximately 500 acres of previously mined taconite lands are reclaimed on average annually.
- 35 million tons iron ore produced from Minnesota's six active iron mines in CY 2023; about 12% of this mining activity involved state-owned minerals
- 2,550 state land leases managed in CY 2023 (leases granted by the DNR that provide rights to an area's above ground natural resources for commercial uses, including agricultural production or timber harvests)
- Over 480 utility licenses granted in CY 2023. Utility licenses are required for installation of any utility over, under, or across any state land or public water.



Mining at Echo Lake Quarry

Parks and Trails Division

- 11.3 million visitors to state park and recreation areas with 1.14 million overnight visitors served in CY 2023
- 259,000 one-day and 228,000 year-round state park vehicle permits sold and 47,000 parks license plates registered in FY 2024
- 141 campgrounds managed, including 93 within state parks, 42 within state forests, and 5 within state recreation areas. 24 horse campgrounds managed, including 12 within state parks and 12 within state forests.
- 25 state trails managed, 2,900 total trail miles authorized, 1,500 trail miles developed (of which 645 miles are paved)
- 29 state forest day-use areas managed
- 35 state water trails managed, totaling over 4,500 miles
- 812,000 boats registered (motorized and non-motorized boats), 375,000 off-highway vehicles including 224,000 Class 1 all-terrain vehicles (ATVs), 123,000 Class 2 ATVs, 18,000 off-highway motorcycles, and 10,000 off-road vehicles registered in CY 2023. 203,000 snowmobiles registered in FY 2023
- 22,300 miles of snowmobile state and grant-in-aid trails managed, 3,500 miles of off highway vehicle state and grant-in-aid trails managed, 870 miles of ski state and grant-in-aid trails managed
- 195,000 visitors participated in more than 8,600 interpretive programs and events in CY 2023



Canoe ride at Glacial Lake State Park

This document is intended to be an overview of select DNR facts and figures. Numbers are rounded and based on the best available information.

©2025, State of Minnesota, Department of Natural Resources. Minnesota DNR is an equal opportunity provider.

AGY_0087_25