



**Table 2 - Corrected
Game and Fish Fund
Expenditures by Account
Fiscal Year 2014
(In Thousands)**

	<u>Game & Fish Operations</u>	<u>Deer and Bear</u>	<u>Deer Mgmt</u>	<u>Waterfowl Habitat</u>	<u>Trout and Salmon</u>	<u>Pheasant Habitat</u>	<u>Wild Rice</u>
Fish and Wildlife.....	\$ 49,718	\$ 1,275	\$ 1,291	\$ 433	\$ 753	\$ 535	\$ 40
License Center.....	4,198	-	-	-	-	-	-
Ecological & Water Resources..	2,296	-	-	-	-	-	-
Enforcement.....	19,607	-	-	-	-	-	-
Parks and Trails.....	1,869	-	-	-	-	-	-
Forestry.....	-	-	-	-	-	-	-
Lands and Minerals.....	635	-	-	-	-	-	-
Operations Support.....	-	-	-	-	-	-	-
Statewide Indirect.....	1,189	-	-	-	-	-	-
Transfers-out.....	1,691	-	-	-	-	-	-
	<u>\$ 81,203</u>	<u>\$ 1,275</u>	<u>\$ 1,291</u>	<u>\$ 433</u>	<u>\$ 753</u>	<u>\$ 535</u>	<u>\$ 40</u>

Chart 4
Walleye Stocking 2003 - 2013

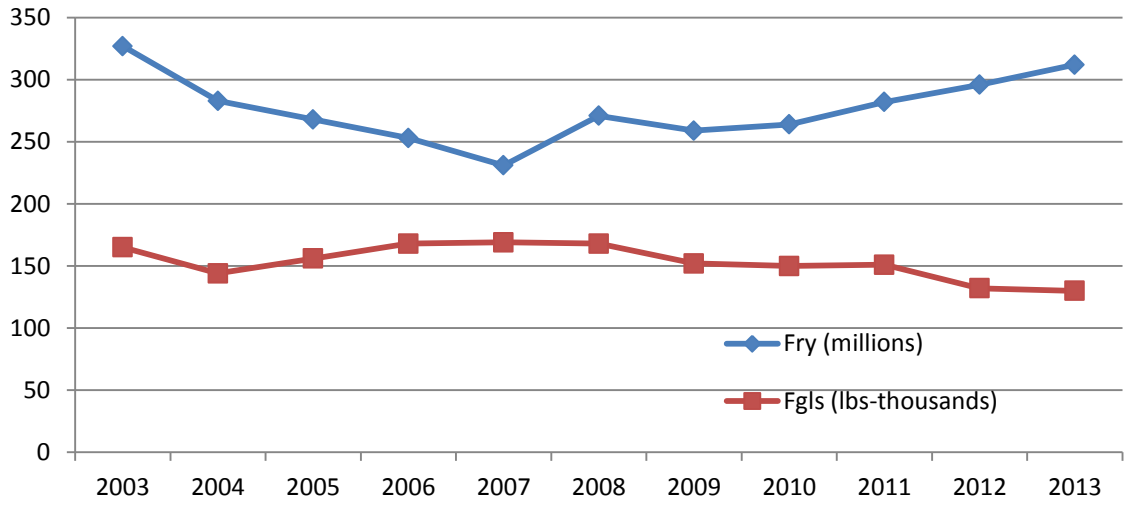


Chart 6
Trout & Salmon Stocking

