

2014 Minnesota Elk Harvest Report

Leslie McInenly, Big Game Program Leader
Ruth Anne Franke, Area Wildlife Supervisor
Graham Parson, Asst. Area Wildlife Manager
Joel Huener, Wildlife Area Supervisor

Introduction

A limited number of licenses are offered to Minnesota residents to hunt elk. In 2014, there were two established zones: 1) Zone 20 - Kittson County Central and 2) Zone 30 - Kittson County Northeast (Figure 1). Zone 10 near Grygla, Minnesota, was closed in 2014 because the population was below goal (Figure 2). In 2014, there were two regular season hunts (September 13-21; September 27 – October 5). Hunts were held during the first season in both zones and during the remaining season only in zone 20. The hunts were structured so that they fell within the breeding season when bull elk are most vulnerable and elk can be located by vocalizations.

Methods

All elk hunters are required to attend a mandatory orientation and if successful, they must register their animal through the local DNR office. Kill locations are mapped and various data are collected, including age/sex as well as biological samples for disease testing and other monitoring projects.

Results

A total of 9 licenses were available and 1167 individuals or parties applied for the opportunity to hunt elk (Table 1). A first random drawing was applied to landowners who applied for the one landowner license available in Zone 20, Season A. All remaining landowners were then placed into the general drawing for remaining elk licenses. For Zone 20, applicants were given the opportunity to select either the first or second season in which to hunt. Licenses were distributed through a second random drawing conducted per Zone and season. In 2014, a total of 6 elk were harvested in the zones (Table 2). Long-term elk harvest for the zones is depicted in Tables 3 and 4.

Table 1. License allocation and application numbers for three elk hunting zones, 2014.

Zone	Either-Sex	Antlerless	Bull-only	Total	Total Applicants
20 – Kittson Central	0	0	7	7	890
<i>Season A</i>	0	0	4	4	484
<i>Season B</i>	0	0	3	3	406
30 – Kittson NE	0	0	2	2	277
Total	0	0	9	9	1167

Table 2. Distribution of the 2014 Minnesota elk harvest. License allocation totals represent the actual number sold, not the number authorized through rule.

Kittson County Central Hunt Zone (20)

Season	Bulls-only Licenses	Antlerless Licenses	Bulls taken	Antlerless taken	Total elk taken
September 13 - 21	4	0	3	0	3
Sept. 27 - Oct. 5	3	0	1	0	1
Total	7	0	4	0	4

Kittson County Northeast Hunt Zone (30)

Season	Bull-only Licenses	Bulls taken	Total elk taken
September 13 - 21	2	2	2
Total	2	2	2

Table 3. Grygla elk harvests, 1987-2014.

Year	Grygla			
	Bulls (or Either-Sex)		Antlerless	
	Permits	Harvest	Permits	Harvest
1987	2	1	2	1
1996	2	2	7 (1 alternate)	6
1997	5 (2 alternate)	1	5 (2 alternate)	2
1998	4 (2 alternate)	2	0	0
2004	1	1	4	2
2005	1	0	4	0
2006	2	2	6	2
2007	0	0	6	6
2008	2	2	10	6
2009	2	3*	12	11
2010	2	1	5	3
2011	2	2	3	0
2012	2	1	3	0
2013	Closed	0	Closed	0
2014	Closed	0	Closed	0
Total	27	19	67	39

Table 4. Kittson County elk harvests, 2008-2014.

Kittson County (Combined)				
Year	Bulls (or Either-Sex)		Antlerless	
	Permits	Harvest	Permits	Harvest
2008	1	1	10	10
2009	12	9 ^a	4	5
2010	1	1	3	3
2011	2	3 ^b	8 ^c	4
2012	5	4 ^d	13	3
2013	8	6	15	6
2014	7	4	0	0
Total	36	28	53	31

^a One additional bull (6x7) was wounded but not retrieved in 2009. It was found dead later and is counted in the total.

^b One bull was a male calf and was legally tagged as an antlerless animal.

^c Three unsuccessful hunters from the Grygla zone were invited to participate in the January extended season in Kittson County, however only 2 participated and were included in the number of antlerless permits issued.

^d One bull was a sub-legal spike and was confiscated.

Figure 1. Kittson County Zones.

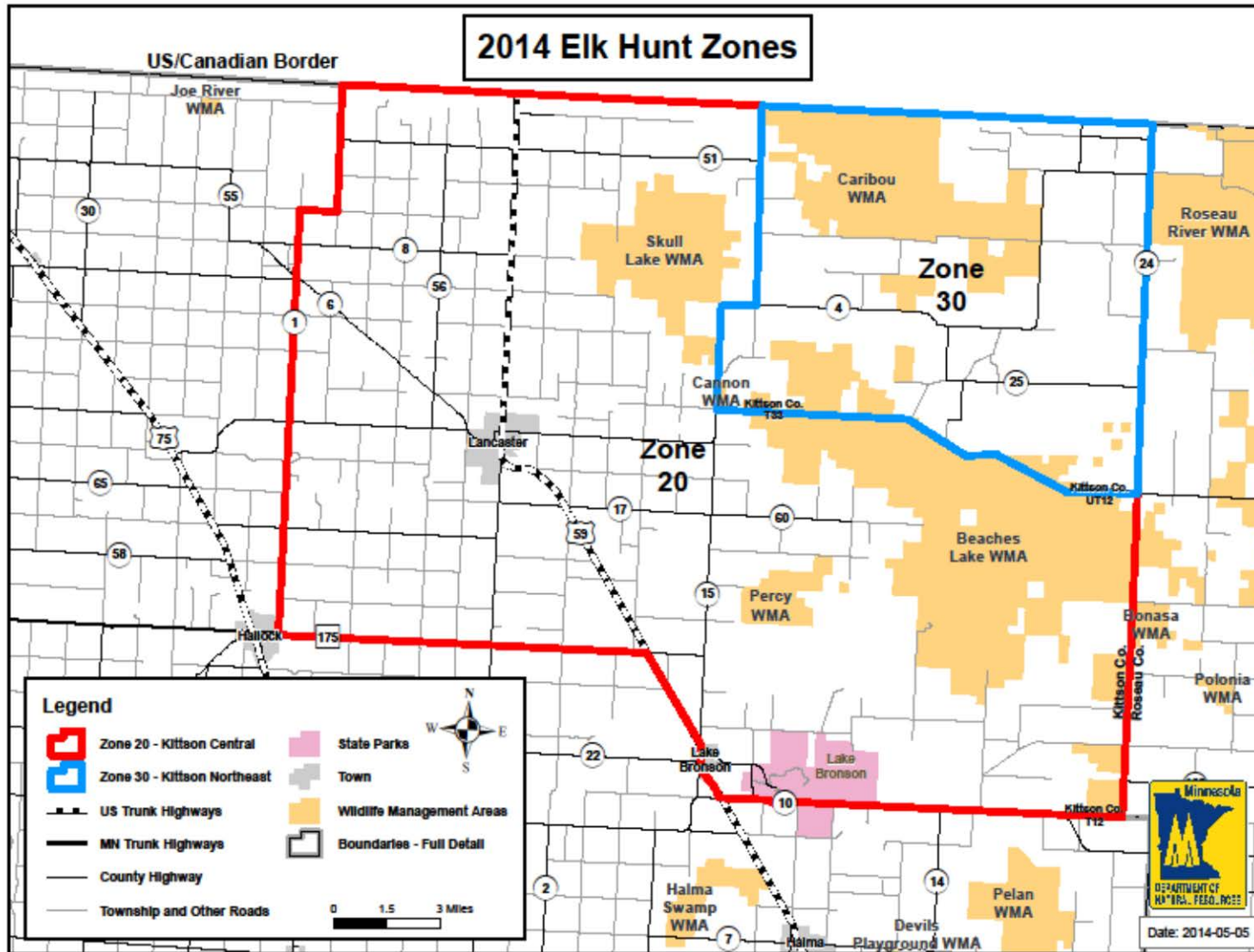


Figure 2. Grygla Elk Hunt Zone.

