

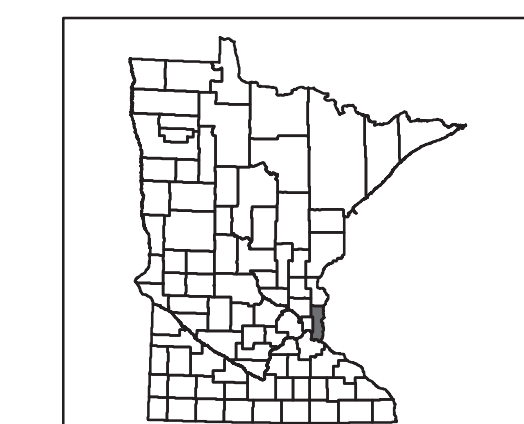
# Public Waters Washington County Minnesota

Public Waters are defined in Minnesota Statutes, section 103C.005. The boundaries of public waters shown on this map are approximate. A public water boundary coincides with the ordinary high water level as defined in Minnesota Statutes, section 103C.005 and is determined through DNR field inspection or survey. Public waters are subject to regulation as per Minnesota Statutes, section 103C.245. Current designated trout streams are listed in Minnesota Rules, part 6264.0050. Shaded Public Land Survey sections may contain designated trout stream tributaries (see Minnesota Rules, part 6264.0050) subject to permit requirements. Additional public water courses may exist within these sections, subject to field determination. It is incumbent upon a person contemplating work in a public watercourse to investigate whether said watercourse is a designated trout stream regardless of whether said public watercourse is depicted on this map. Note: As stated in Minnesota Statutes, section 103C.205, the designation of waters of this state as public waters does not effect state law forbidding trespass on private lands. Contact the DNR office in your area for further information or visit <http://dnr.gov>.

**Legend**

- Public Water Basin or Wetland
- Public Water Watercourse
- Public Ditch/Altered Natural Watercourse
- Other Watercourse, Not a Public Watercourse
- Interstate Highway
- Federal Trunk Highway
- State Trunk Highway
- City Streets & Township Roads
- PLS40 Section Line
- PLS40 Township Line
- Municipal Boundaries
- Public Land Survey Sections Containing Designated Trout Stream Tributaries
- Washington County
- Adjacent Counties

Locator Map:



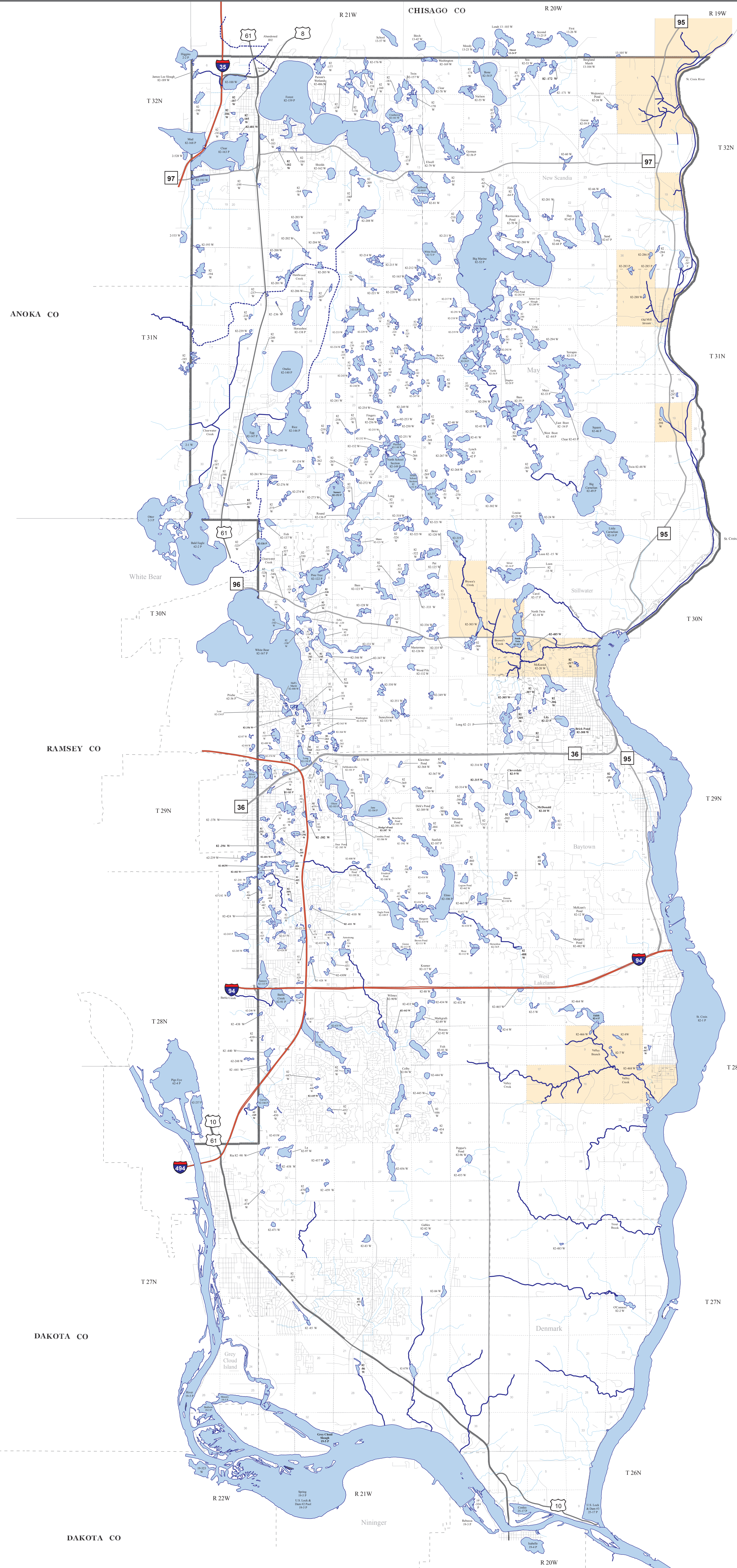
Scale: Convert map units to miles  
0 0.5 1 2 3 4 Miles

The DNR Information Center  
Twin Cities: (612) 296-1377  
Minnesota Toll Free: 1-888-646-6367  
Telecommunication device for the hearing impaired: (651) 296-1484  
TDD Minnesota toll free: 1-800-657-3929  
DNR web site: <http://dnr.state.mn.us>

This information is available in an alternative format on request. Available opportunities to participate in and benefit from programs of the Minnesota Department of Natural Resources. In available regardless of race, color, national origin, sex, local or non-local status, status with regard to public assistance, age, or disability. Discrimination inquiries should be sent to Minnesota DNR, 501 Lafayette Road, St. Paul, MN 55155-4931, or the Equal Opportunity Officer, Department of the Interior, Washington, DC 20240. © 2011 State of Minnesota. Department of Natural Resources.

This map was prepared from publicly available information only. Every reasonable effort has been made to ensure the accuracy of the factual data on which this map is based. However, the Department of Natural Resources does not warrant the accuracy, completeness, or any implied use of these data. Users may wish to verify critical information sources include both the references here and information on file in the offices of the Minnesota Department of Natural Resources. This map should not be used to establish legal title, boundaries, or locations of improvements. This map was compiled and generated using geographic information systems (GIS) technology. Spatial data products are available from DNR Ecological and Water Resources at <http://dnr.gov/waters> and at <http://dnr.gov/arcgis>.

The Adobe PDF file represents a map created at a scale of 1/4 inch = 1 mile (1:264,000). The data were compiled at a scale of 1:60,000 using the Universal Transverse Mercator Projection, zone 15, 1983 North American Datum. This map was created on 20 May 2011.



ANOKA CO  
RAMSEY CO  
DAKOTA CO

CHISAGO CO  
WISCONSIN  
DAKOTA CO