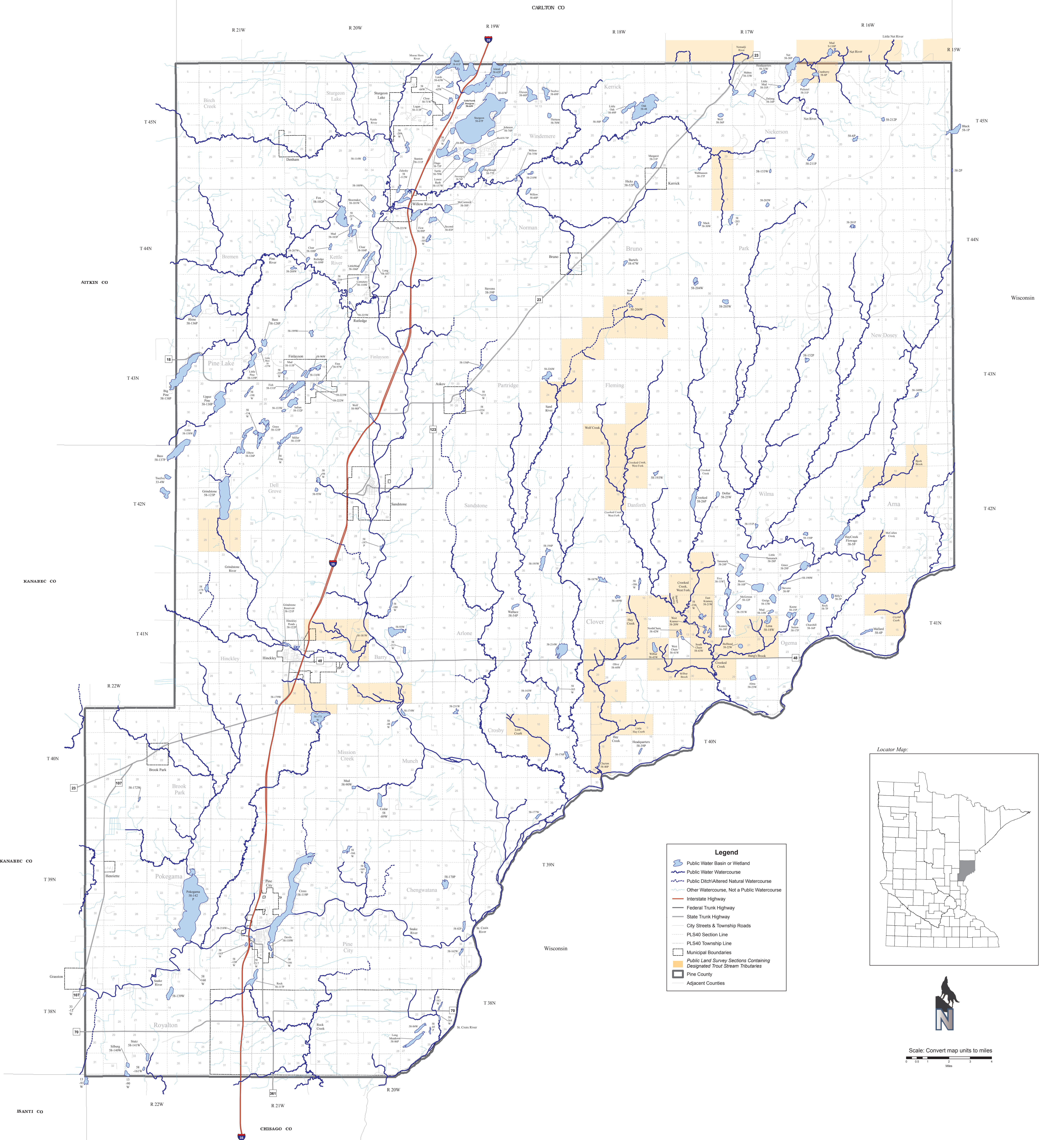


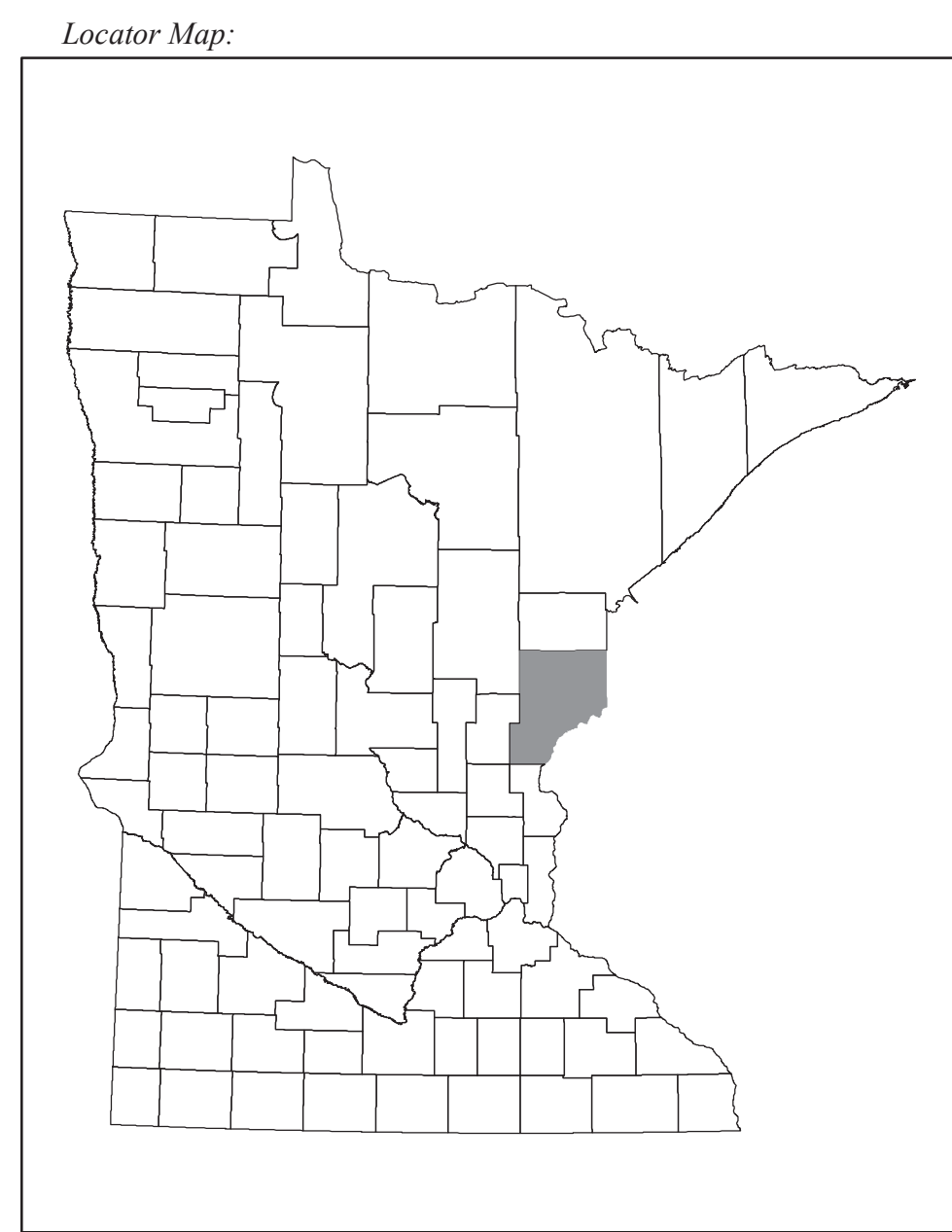
Public Waters Pine County, Minnesota

Public Waters are defined in Minnesota Statutes, section 103G.005. The boundaries of public waters shown on this map are approximate. A public water boundary coincides with the ordinary high water level as defined in Minnesota Statutes, section 103G.005 and is determined through DNR field inspection or survey. Public waters are subject to regulation as per Minnesota Statutes, section 103G.245. Current designated trout streams are listed in Minnesota Rules, part 6264.0050. Shaded Public Land Survey sections may contain designated trout stream tributaries (see Minnesota Rules, part 6264.0050) subject to permit requirements. Additional public watercourses may exist within these sections, subject to field determination. It is incumbent upon a person contemplating work in a public watercourse to investigate whether said watercourse is a designated trout stream regardless of whether said public watercourse is depicted on this map. Note: As stated in Minnesota Statutes, section 103G.205, the designation of waters of this state as public waters does not affect state law forbidding trespass on private lands. Contact the DNR office in your area for further information or visit <http://dnr.state.mn.us>.



Legend

- Public Water Basin or Wetland
- Public Water Watercourse
- Public Ditch/Altered Natural Watercourse
- Other Watercourse, Not a Public Watercourse
- Interstate Highway
- Federal Trunk Highway
- State Trunk Highway
- City Streets & Township Roads
- PLS40 Section Line
- PLS40 Township Line
- Municipal Boundaries
- Public Land Survey Sections Containing Designated Trout Stream Tributaries
- Pine County
- Adjacent Counties



The DNR Information Center
 Twin Cities: (651) 296-6157
 Minnesota Toll Free: 1-888-644-6367
 Telecommunication device for the hearing impaired (TDD): (651) 296-5484
 TDD Minnesota Toll Free: 1-800-657-3929
 DNR web site: <http://dnr.state.mn.us>

This information is available in alternative format on request.
 Equal opportunity to participate is available from programs of the Minnesota Department of Natural Resources is available regardless of race, color, national origin, sex, creed, or handicap. Contact with regard to public assistance, age, or disability. Discrimination inquiries should be sent to Minnesota DNR, 500 Lafayette Ave., St. Paul, MN 55155-4331, or the Equal Opportunity Office, Department of the Interior, Washington, DC 20240.

This map was prepared from publicly available information only. Every reasonable effort has been made to ensure the accuracy of the factual data on which this map was prepared is based. However, the Department of Natural Resources does not warrant the accuracy, completeness, or any implied use of these data. Users may wish to verify critical information; sources include both the references here and information on file in the offices of the Minnesota Department of Natural Resources. This map should not be used to establish legal title, boundaries, or locations of improvements. This map was compiled and prepared using geographic information systems (GIS) technology. Digital data products are available from DNR, Ecological and Water Resources at <http://dnr.state.mn.us> and <http://dnr.state.mn.us>.

The Adobe PDF file represents a map created at a size of 34 inches by 44 inches (ANSI E). The data were compiled at a scale of 1:100,000 using the Universal Transverse Mercator Projection, gridzone 15, 1983 North American Datum. This map was created on: 20 May 2011.