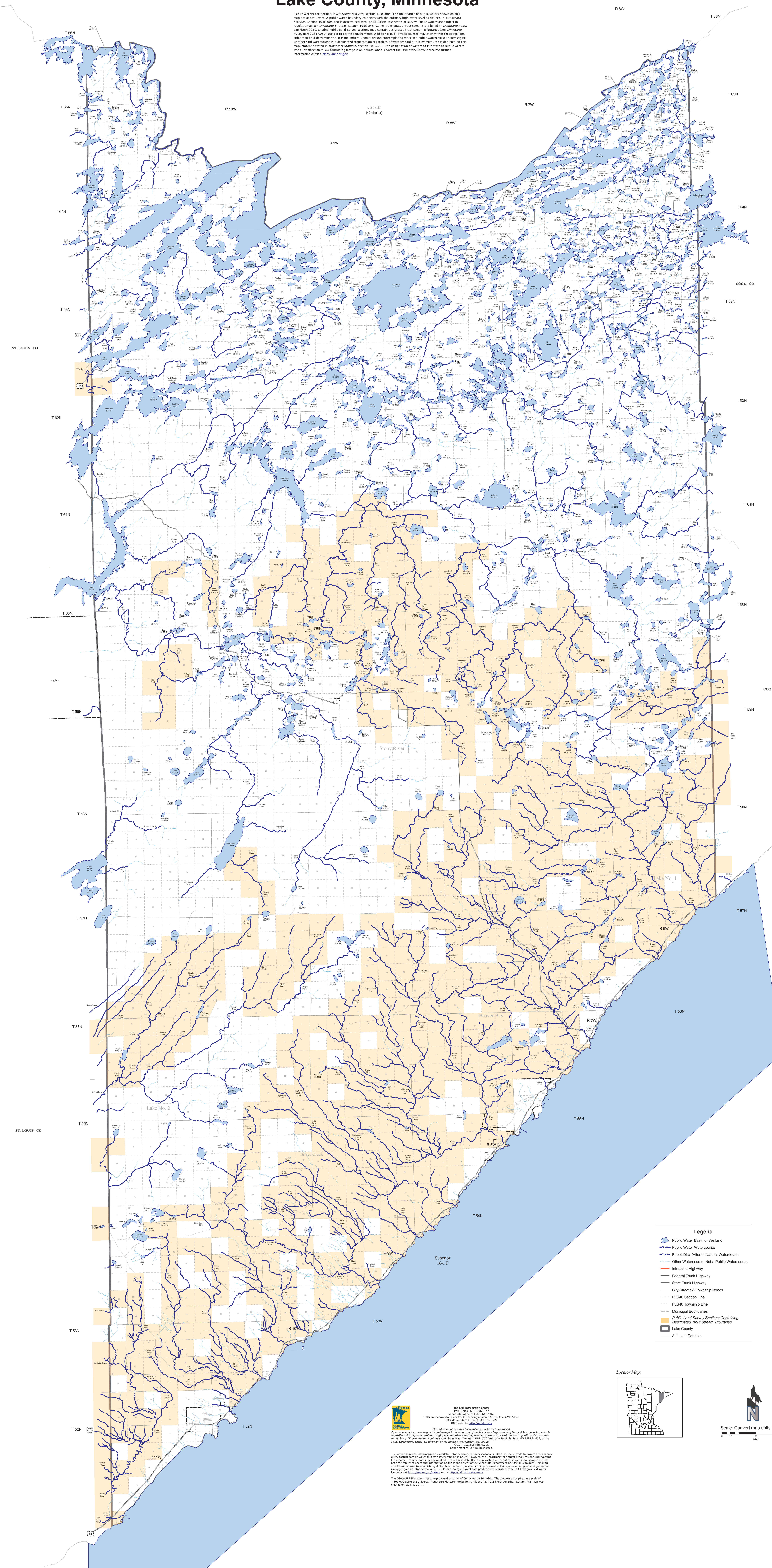


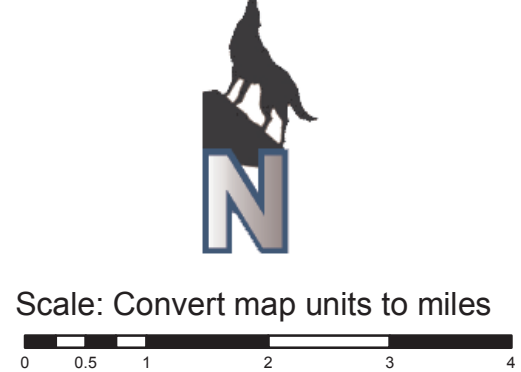
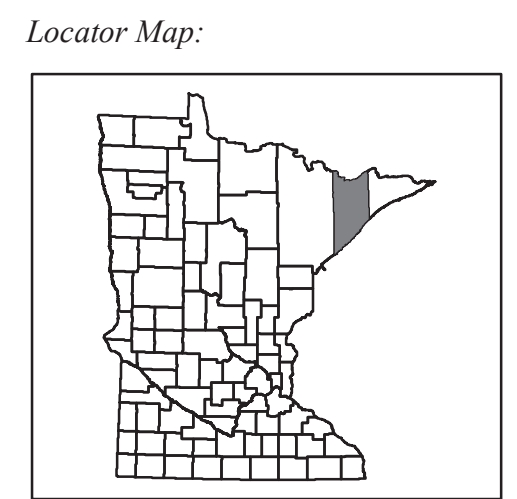
Public Waters Lake County, Minnesota

Public Waters are defined in Minnesota Statutes, section 103C.005. The boundaries of public waters shown on this map are approximate. A public water boundary coincides with the ordinary high water level as defined in Minnesota Statutes, section 103C.005 and is determined through DNR field inspections or survey. Public waters are subject to regulation as per Minnesota Statutes, section 103C.243. Current designated trout streams are listed in Minnesota Rules, part 62A.0200. Shaded Public Land Survey sections may contain designated trout streams in tributaries to Minnesota Public Land Survey sections (subject to permit requirements). Additional public watercourses may exist within these sections, subject to field determination. It is the user's responsibility to verify the existence of a public watercourse to determine whether such watercourse is a designated trout stream regardless of whether said public watercourse is depicted on this map. Note: As stated in Minnesota Statutes, section 103C.020, the designation of waters of this state as public waters does not affect state law forbidding trespass on private lands. Contact the DNR office in your area for further information or visit <http://dnr.state.mn.us>.



Legend

- Public Water Basin or Wetland
- Public Water Watercourse
- Public Ditch/Altered Natural Watercourse
- Other Watercourse, Not a Public Watercourse
- Interstate Highway
- Federal Truck Highway
- State Trunk Highway
- City Streets & Township Roads
- PLS40 Section Line
- PLS40 Township Line
- Municipal Boundaries
- Public Land Survey Sections Containing Designated Trout Stream Tributaries
- Lake County
- Adjacent Counties



The DNR Information Center
 601 North Broadway
 St. Paul, MN 55101-1000
 Telephone: (612) 296-6300
 Fax: (612) 296-6301
 TDD: (612) 296-6302
 Minnesota Relay: 1-800-657-3809
 DNR Web Site: www.dnr.state.mn.us

This information is provided as public information only. Every reasonable effort has been made to ensure the accuracy of the material shown on this map, but the Department of Natural Resources does not warrant the accuracy, completeness, or timeliness of the data. Users are advised to verify critical information. Users include both the user and the provider of the information. The information is provided as a public service. This map is provided as a public service. The information is provided as a public service. This map is provided as a public service.

This map was prepared from publicly available information only. Every reasonable effort has been made to ensure the accuracy of the material shown on this map, but the Department of Natural Resources does not warrant the accuracy, completeness, or timeliness of the data. Users are advised to verify critical information. Users include both the user and the provider of the information. The information is provided as a public service. This map is provided as a public service.

The Adobe PDF file represents a map created at a scale of 60 inches by 36 inches. The data were compiled at a scale of 1:100,000 using the National Transverse Mercator Projection, version 10, 1983 North American Datum. This map was created on: 20 May 2011.