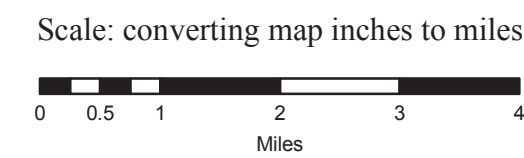
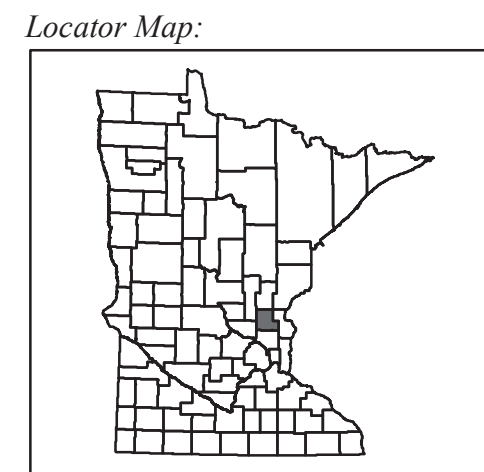
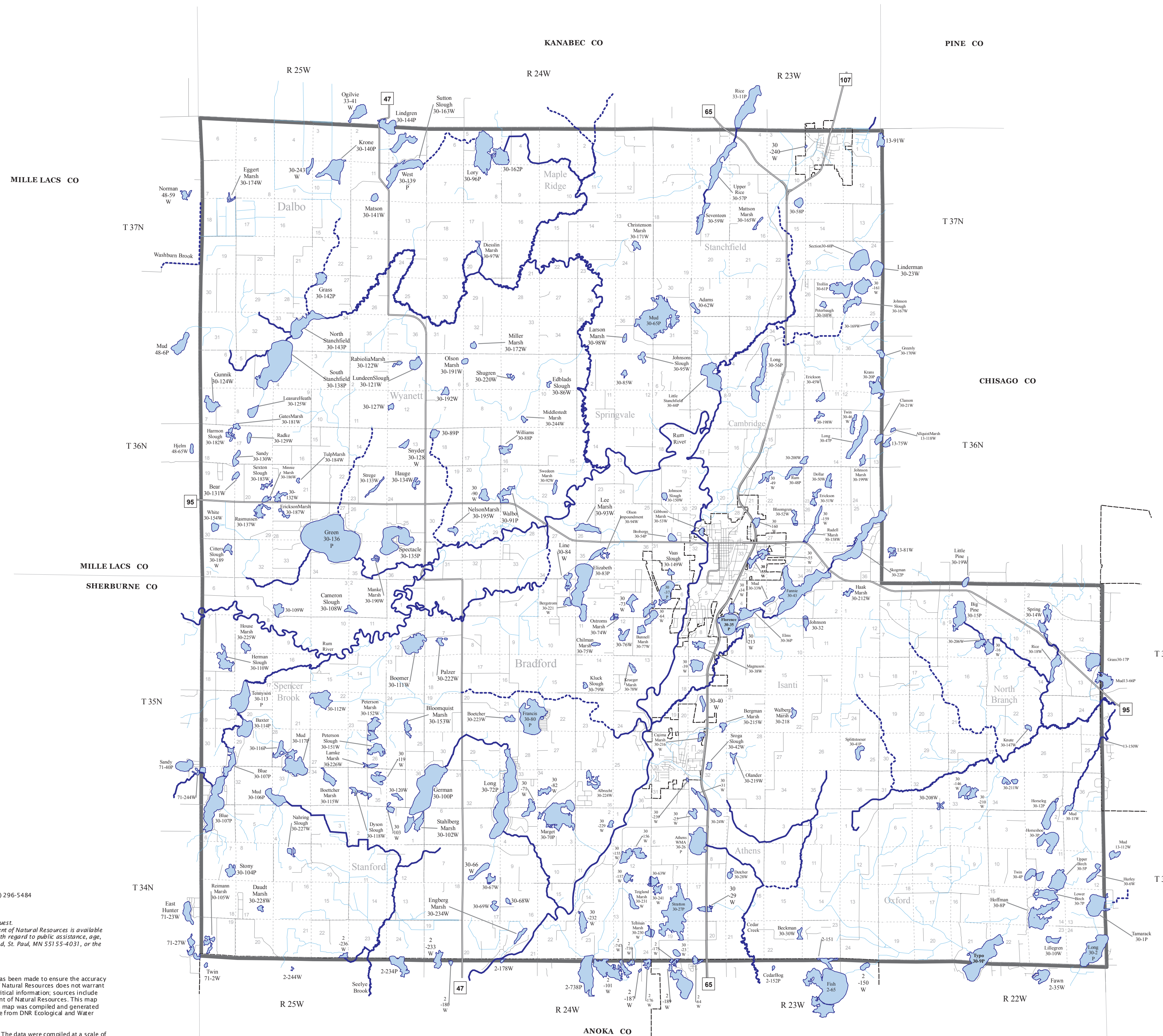


Public Waters Isanti County, Minnesota

Public Waters are defined in *Minnesota Statutes*, section 103G.005. The boundaries of public waters shown on this map are approximate. A public water boundary coincides with the ordinary high water level as defined in *Minnesota Statutes*, section 103G.005 and is determined through DNR field inspection or survey. Public waters are subject to regulation as per *Minnesota Statutes*, section 103G.245. Current designated trout streams are listed in *Minnesota Rules*, part 6264.0050. Shaded Public Land Survey sections may contain designated trout stream tributaries (see *Minnesota Rules*, part 6264.0050) subject to permit requirements. Additional public watercourses may exist within these sections, subject to field determination. It is incumbent upon a person contemplating work in a public watercourse to investigate whether said watercourse is a designated trout stream regardless of whether said public watercourse is depicted on this map. **Note:** As stated in *Minnesota Statutes*, section 103G.205, the designation of waters of this state as public waters **does not** affect state law forbidding trespass on private lands. Contact the DNR office in your area for further information or visit <http://mndnr.gov>.



Legend	
	Public Water Basin or Wetland
	Public Water Watercourse
	Public Ditch/Altered Natural Watercourse
	Other Watercourse, Not a Public Watercourse
	Interstate Highway
	Federal Trunk Highway
	State Trunk Highway
	City Streets & Township Roads
	PLS40 Section Line
	PLS40 Township Line
	Municipal Boundaries
	Isanti County
	Adjacent Counties

The DNR Information Center
Twin Cities: (651) 296-6157
Minnesota toll free: 1-888-646-6367
Telecommunication device for the hearing impaired (TDD): (651) 296-5484
TDD Minnesota toll free: 1-800-657-3929
DNR web site: <http://mndnr.gov>

This information is available in alternative format on request.
Equal opportunity to participate in and benefit from programs of the Minnesota Department of Natural Resources is available regardless of race, color, national origin, sex, sexual orientation, marital status, status with regard to public assistance, age, or disability. Discrimination inquiries should be sent to Minnesota DNR, 500 Lafayette Road, St. Paul, MN 55155-4031, or the Equal Opportunity Office, Department of the Interior, Washington, DC 20240.
© 2011 State of Minnesota
Department of Natural Resources.

This map was prepared from publicly available information only. Every reasonable effort has been made to ensure the accuracy of the factual data on which this map interpretation is based. However, the Department of Natural Resources does not warrant the accuracy, completeness, or any implied uses of these data. Users may wish to verify critical information; sources include both the references here and information on file in the offices of the Minnesota Department of Natural Resources. This map should not be used to establish legal title, boundaries, or locations of improvements. This map was compiled and generated using geographic information systems (GIS) technology. Digital data products are available from DNR Ecological and Water Resources at <http://mndnr.gov/waters> and at <http://del.dnr.state.mn.us>.

The Adobe PDF file represents a map created at a size of 22 inches by 34 inches (ANSI D). The data were compiled at a scale of 1:100,000 using the Universal Transverse Mercator Projection, gridzone 15, 1983 North American Datum. This map was created on: 20 May 2011.