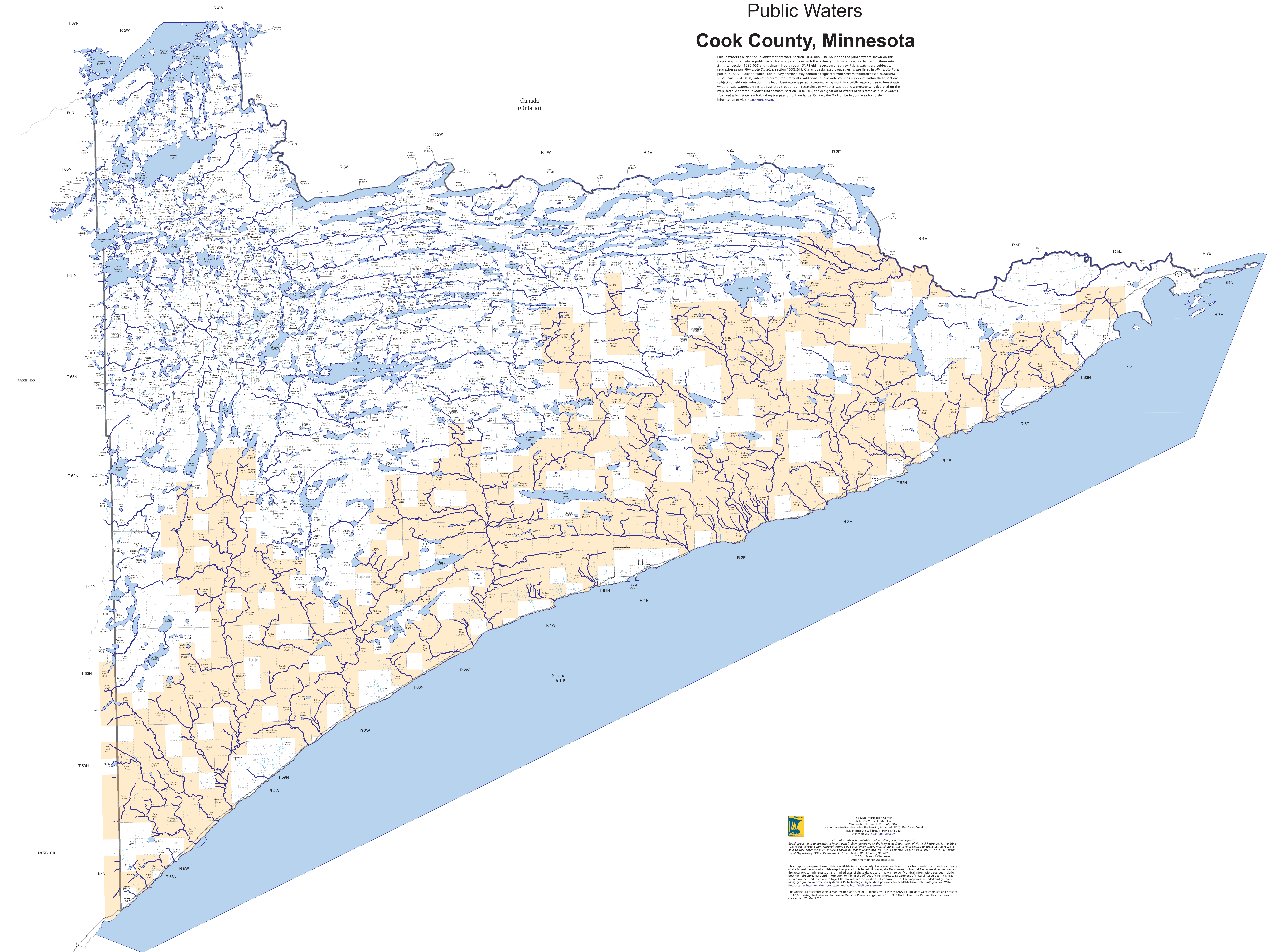


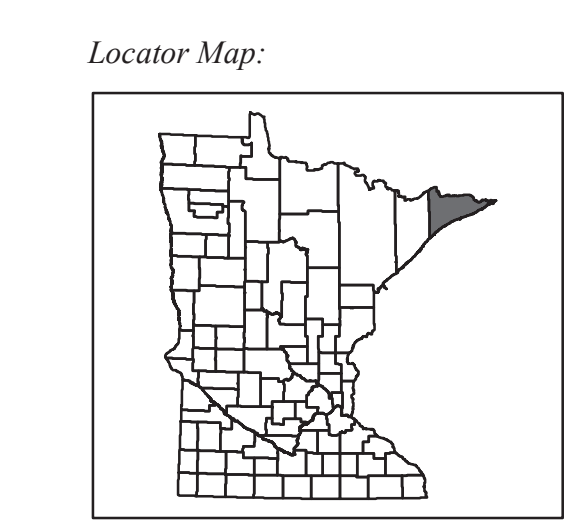
Public Waters Cook County, Minnesota

Public Waters are defined in Minnesota Statutes, section 103C.005. The boundaries of public waters shown on this map are approximate. A public water boundary considers with the ordinary high water level as defined in Minnesota Statutes, section 103C.005 and is determined through DNR field inspection or survey. Public waters are subject to regulation as per Minnesota Statutes, section 103C.245. Current designated trout streams are listed in Minnesota Rules, part 6204.0050 subject to permit requirements. Additional public watercourses may exist within these sections, subject to field determination. It is recommended upon a specific watercourse to investigate whether said watercourse is a designated trout stream regardless of whether said public watercourse is depicted on this map. Make a field in Minnesota Statutes, section 103C.201, the diversion of waters of this state as public waters does not affect state law forbidding trespass on private lands. Contact the DNR office in your area for further information or visit <http://dnr.state.mn.us>.



Legend

- Public Water Basin or Wetland
- Public Water Watercourse
- Public Ditch/Altered Natural Watercourse
- Other Watercourse, Not a Public Watercourse
- Interstate Highway
- Federal Trunk Highway
- State Trunk Highway
- City Streets & Township Roads
- PL540 Section Line
- PL540 Township Line
- Municipal Boundaries
- Public Land Survey Sections Containing Designated Trout Stream Tributaries
- Cook County
- Adjacent Counties



Scale: Convert map units to miles

The DNR Information Center
 Tom Covey 651.264.4127
 Minnesota toll free 1-888-645-6337
 Telecommunication devices for hearing impaired 651.294.5486
 100 Minnesota Ave. Ste. 600 St. Paul, MN 55155-1009
 DNR web site <http://dnr.state.mn.us>

This information is available in alternative format on request.
 Equal opportunity to participate in and benefit from programs of the Minnesota Department of Natural Resources is available regardless of race, color, national origin, sex, creed or handicap. Requests for alternative formats should be made to Minnesota DNR, 100 Lakeville Ave., St. Paul, MN 55155-1009, or the Access Operations Section, Department of the Interior, 2025 State of Minnesota, Department of Natural Resources.
 © 2011 State of Minnesota.
 This map was prepared from publicly available information only. Every reasonable effort has been made to ensure the accuracy of the data shown on this map. However, the Department of Natural Resources does not warrant the accuracy, completeness, or any implied use of the data. Use the map with other related information. Data is available for reference here and information on file in the office of the Minnesota Department of Natural Resources. This map should not be used to establish legal title, boundaries, or locations of improvements. This map was compiled and generated using geographic information system (GIS) technology. Digital data products are available from DNR Ecological and Water Resources at <http://dnr.state.mn.us> and other DNR web sites.
 The Adobe PDF file represents a map created at a size of 54 inches by 44 inches (ANSI). The data were compiled at a scale of 1:110,000 using the Universal Transverse Mercator Projection, datum NAD 83, North American Datum. This map was created on 20 May 2011.