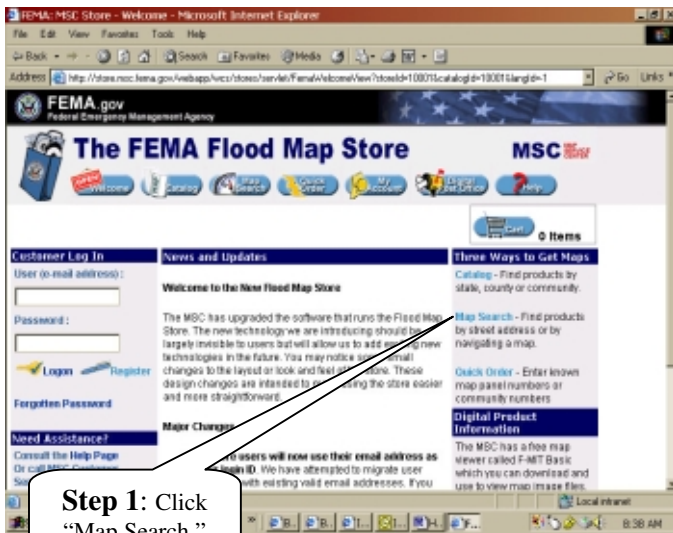


# How to Make a FIRMette Using Map Search

[www.store.msc.fema.gov](http://www.store.msc.fema.gov)

Map Search allows users to view and select a flood map panel geographically. A specific flood map panel or an area of interest can be located by typing in a street address or by using the interactive map. Follow the steps below:

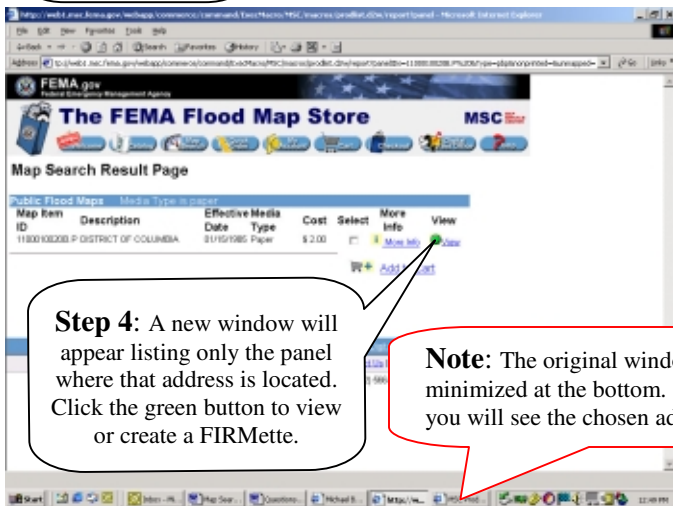


**Step 1:** Click "Map Search."



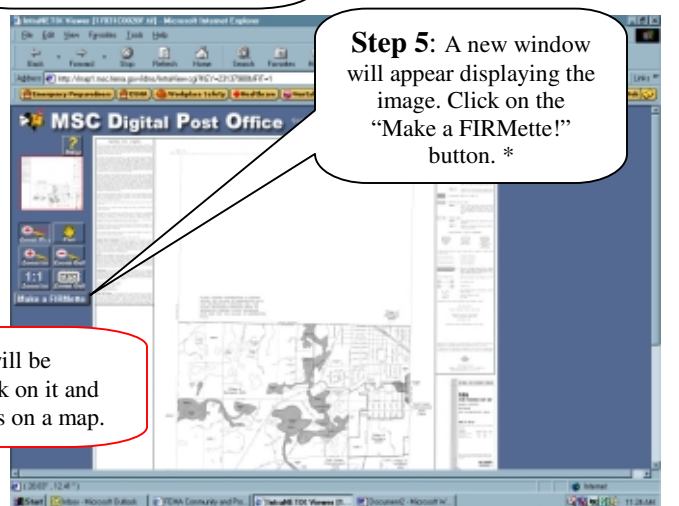
**Step 2:** Select the product you wish to view or order. ("Public Flood Map" for this example)

**Step 3:** Click on address, type in the address of interest and press the Go button.

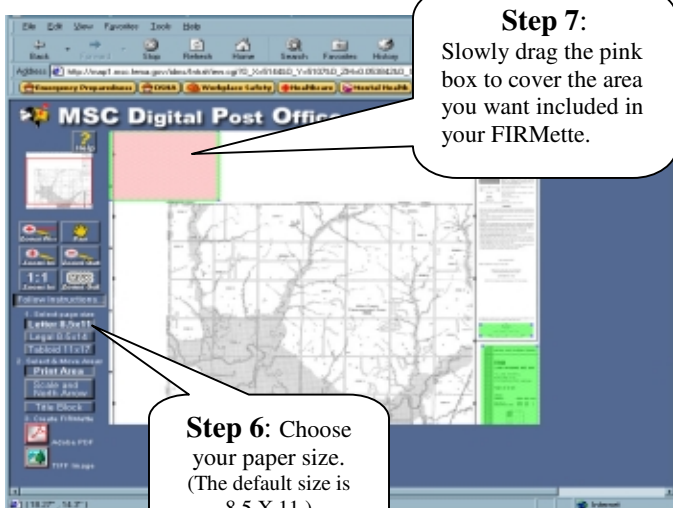


**Step 4:** A new window will appear listing only the panel where that address is located. Click the green button to view or create a FIRMette.

**Note:** The original window will be minimized at the bottom. Click on it and you will see the chosen address on a map.

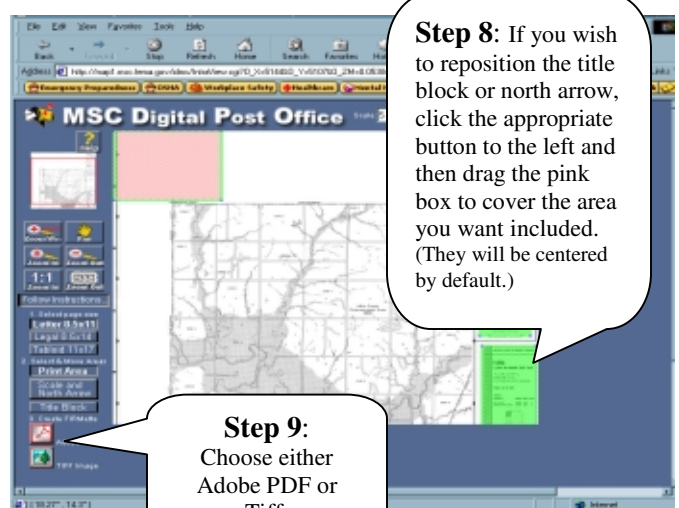


**Step 5:** A new window will appear displaying the image. Click on the "Make a FIRMette!" button. \*



**Step 7:** Slowly drag the pink box to cover the area you want included in your FIRMette.

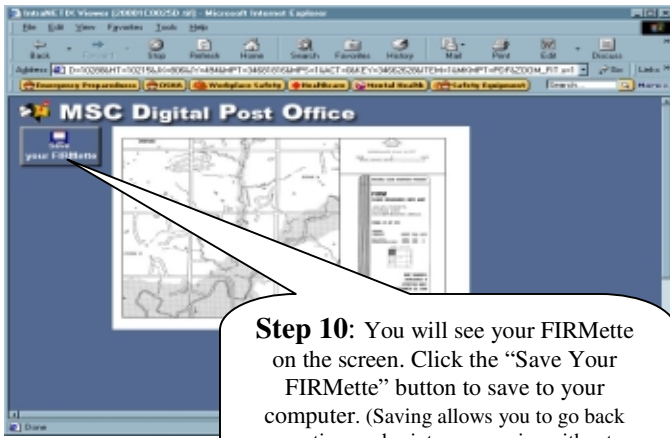
**Step 6:** Choose your paper size. (The default size is 8.5 X 11.)



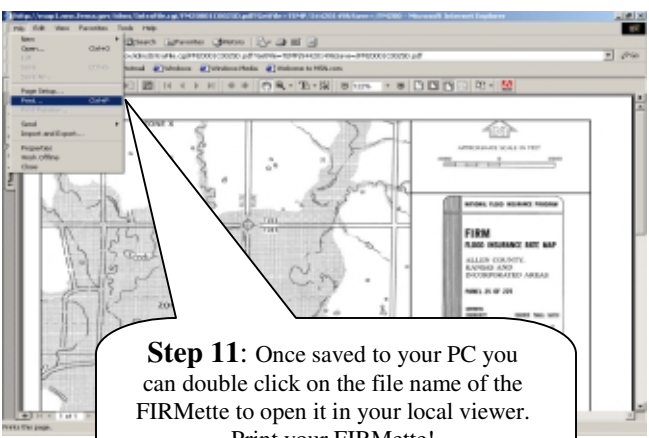
**Step 8:** If you wish to reposition the title block or north arrow, click the appropriate button to the left and then drag the pink box to cover the area you want included. (They will be centered by default.)

**Step 9:** Choose either Adobe PDF or Tiff.

\* Note: If you have used the Zoom In feature, you may need to then click the MAX Zoom Out button before you click "Make a FIRMette" button.

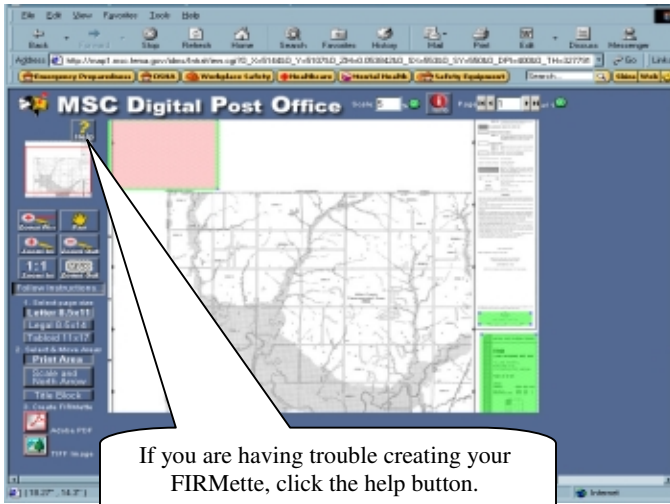


**Step 10:** You will see your FIRMette on the screen. Click the “Save Your FIRMette” button to save to your computer. (Saving allows you to go back any time and print more copies without going through all of the steps again.)

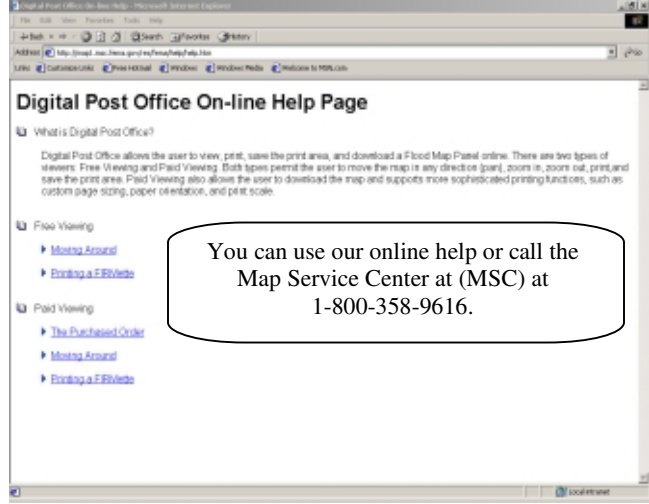


**Step 11:** Once saved to your PC you can double click on the file name of the FIRMette to open it in your local viewer. Print your FIRMette! (Remember to set the layout of your printer to landscape.)

**Note:** Depending on your computer set-up, when saving as Adobe PDF you may get a choice to open or save after you click the Save Your FIRMette button. Sometimes it works better to choose open, then print or save using Adobe Acrobat Reader, rather than clicking the save right away.



If you are having trouble creating your FIRMette, click the help button.



You can use our online help or call the Map Service Center at (MSC) at 1-800-358-9616.