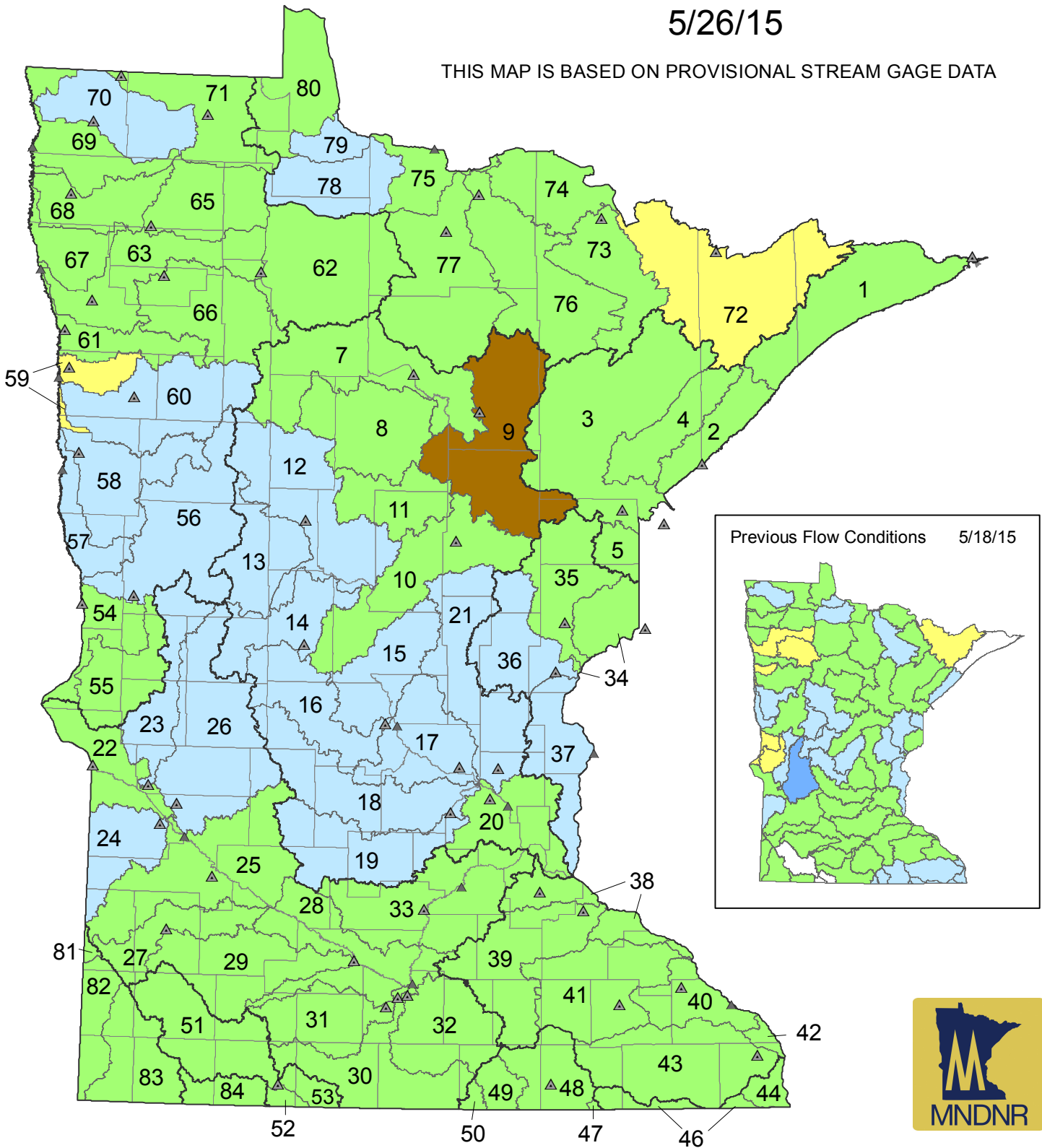











# Minnesota Stream Flow Report

5/26/15

THIS MAP IS BASED ON PROVISIONAL STREAM GAGE DATA



- |   |  |   |                                 |
|---|--|---|---------------------------------|
|  | Flood Flows: flows exceed established Flood Stage or the highest monthly Q10 |  | Designated major watershed gage |
|  | High Flows : flows exceed the monthly Q25                                    |  | Designated main stem river gage |
|  | Normal Flows: flows are between montly Q25 and monthly Q75 exceedence levels |  | No Data                         |
|  | Low Flows: below monthly Q75 exceedence levels                               |  | Flow affected by backwater      |
|  | Minimum Flows: below the annual Q90, or an established protection level      |   |                                 |

