

NONPOINT SOURCE POLLUTION REDUCTION IMPLEMENTATION

PROJECT ID:

306-23-00

YEAR:

1999

GRANTEE:

South St. Louis SWCD

COUNTY:

St. Louis

CATEGORY:

Coastal Land Use,
Planning & Development

GRANT AWARD:

\$7,560

TOTAL PROJECT COST:

\$11,635

The mission of Minnesota's Lake Superior Coastal Program is to preserve, protect, restore and enhance coastal resources for present and future generations. We provide technical and financial assistance for local communities to balance protection of coastal resources with providing residents and visitors places to work, live, and play.



FOR MORE INFORMATION:

Lake Superior Coastal Program
1568 Highway 2
Two Harbors, MN 55616
Phone: 218.834.6612
www.dnr.state.mn.us/waters/lakesuperior

SUMMARY

Nonpoint source pollution is one of the biggest threats to water quality in the Lake Superior basin. To address this threat, the South St Louis Soil Water Conservation District implemented a project to inform key stakeholders about erosion and nonpoint source pollution control. A fact sheet was created to explain nonpoint source pollution and to detail where landowners can gain assistance to help solve erosion problems. The fact sheet was distributed by mail to 4,065 properties located on the Lake Superior shoreline and its tributary streams along the coast of Lake Superior. Two erosion control workshops on

nonpoint source issues were held, and 47 people attended. The workshops addressed Natural Resources of the Lake Superior Watershed, Lake Superior Erosion Control, Vegetation for Erosion Control, Inland Water Resources, and sources of technical and financial assistance.

SOLUTIONS FOR NONPOINT SOURCE POLLUTION

- Why you should care about nonpoint source pollution
- Sources of assistance from the South St. Louis Soil & Water Conservation District



NONPOINT SOURCE POLLUTION

According to the U.S. Environmental Protection Agency nonpoint source pollution (NPS) is the nation's largest source of water quality problems.

NPS occurs when rainfall or snowmelt runs over land, picks up pollutants, and deposits them into rivers, lakes, or groundwater. NPS pollution happens whenever activities disturb the land or water. Urban runoff, construction site erosion, septic systems, and altering stream channels are all sources of NPS.

The South St. Louis SWCD primarily works with landowners to correct or prevent nonpoint source pollution caused by sediment from lakeshore erosion, eroding stream banks, construction sites, and storm water runoff.

Sediment has a harmful effect on water quality, fisheries, and wildlife. Individuals can reduce soil erosion and sedimentation by practicing conservation. The SWCD can provide the tools needed to assist in these efforts.

Major erosion problems in the Northland include:

- Shoreline erosion on Lake Superior and inland lakes
- Stream bank erosion
- Storm water runoff
- Construction site erosion
- Roadside erosion

SOURCES OF ASSISTANCE TO REDUCE NONPOINT SOURCE POLLUTION

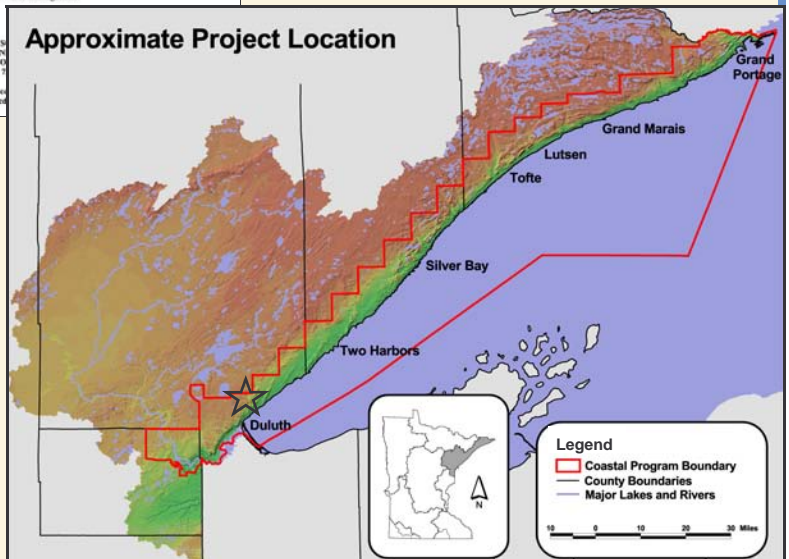
The South St. Louis SWCD provides technical and financial assistance as incentives to install best management practices that stop nonpoint source pollution and protect water quality. There are several different sources of financial assistance available:

- SWCD cost-share program
- State competitive cost-share program
- Low-interest loans for erosion control and septic system updates
- Low-interest loans for agricultural waste management
- Federal cost share programs
- Special grant opportunities



SOUTH ST. LOUIS SWCD
4850 MILLER TRUN
DULUTH, MINNESOTA
TELEPHONE (218) 720-3129
FAX (218) 720-3129
Info @ [sswcd.lakesuperior.org](mailto:info@sswcd.lakesuperior.org)
www.sswcd.lakesuperior.org

Approximate Project Location



Lake Superior Watershed & Shoreline Erosion Control Workshop

Assistance for landowners and local governments to solve nonpoint pollution problems caused by lakeshore & stream bank erosion, storm water runoff, and land use decisions



Sponsored by:
South St Louis
Soil and Water Conservation District

Lakeview Castle
Downstairs Banquet Room
5135 North Shore Drive
Duluth, Minnesota

The workshop will be held twice, attend only one of the following dates:

Thursday, February 21
6 p.m. – 9 p.m.

or
Saturday, February 23
10 a.m. – 1 p.m.

Free
No Obligation
Refreshments Provided

No need to register. For more information call (218) 723-4867 or browse our website at www.southstlouisswcd.org