



TWO HARBORS SCHOOL TRAILS

To provide pedestrian links, find safe routes to school, and increase public access, the Lake County Highway Department constructed Phase I of the Two Harbors Safe Routes to School trails.

The 10 foot wide trail provides for both bicycle and pedestrian travel between 15th Avenue in Two Harbors to 8th Avenue along Lake County a busy County Highway 2. The trail serves as an important link for students walking to and from the new high school, and also serves the Lakeview Memorial Hospital, SuperiorHealth Medical Group Clinic, Two Harbors Arena, Sunrise Nursing Home and the Sunrise on Superior Assisted Living facility.

The trail has quickly become a popular attraction, one that promotes a healthy lifestyle for the community. Every day, the trail sees heavy use by walkers and bicyclists seeking a safe and pleasant route through their neighborhood.



Inspecting the Trail, along the golf course in Two Harbors, MN.



A view of the Trail along Highway 2, in Two Harbors, MN.

PROJECT ID:

306A-06-07

YEAR:

2005

GRANTEE:

Lake County

COUNTY:

Lake

CATEGORY:

Public Access

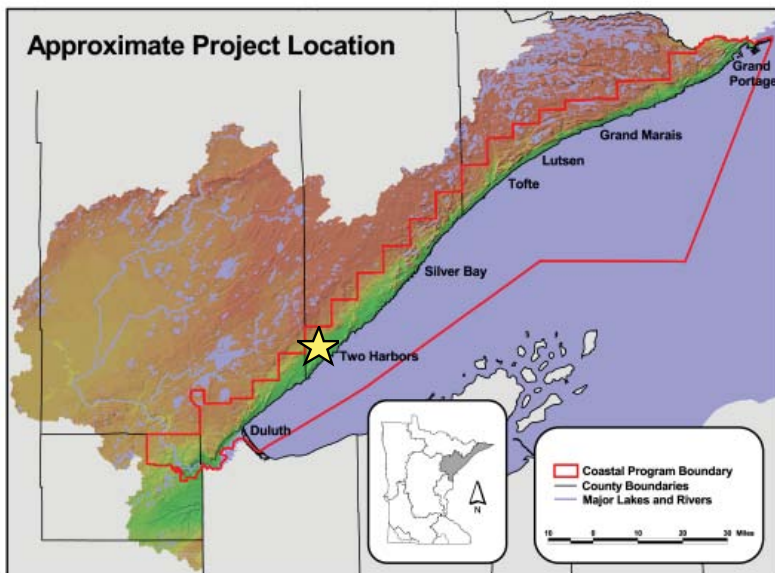
GRANT AWARD:

\$53,000

TOTAL PROJECT COST:

\$109,609

PROJECT LOCATION



FOR MORE INFORMATION

Minnesota's Lake Superior
Coastal Program
1568 Highway 2
Two Harbors, MN 55616
(218) 834-6612

www.dnr.state.mn.us/waters/lakesuperior