



LAKE SUPERIOR BASIN STORMWATER ROUNDTABLE

The Lake Superior Association of Soil and Water Conservation Districts (LSA) has identified stormwater management as its focus area. Increases in stormwater regulations and the addition of North Shore streams to Minnesota's impaired waters list, have raised awareness of how stormwater runoff impacts water resources. The LSA is a natural leader for needed stormwater management conversations in the basin, as they work with a diverse audience: private landowners, local governments and boards, and developers. By assisting with regional stormwater management needs, the LSA can provide consistent permit, design, and site reviews, assist in planning, management, and enforcement, and build regional capacity.



Stormwater runoff after a large rain event in Two Harbors, MN

PROJECT ID:

306-STAR02-07

YEAR:

2005

GRANTEE:

South St. Louis Soil & Water Conservation District

COUNTY:

St. Louis

CATEGORY:

Land Use, Planning & Development

GRANT AWARD:

\$3,265

TOTAL PROJECT COST:

\$6,941

A roundtable was held in June 2007 to explore existing stormwater programs, and discuss regional opportunities for the LSA. Thirty-two people attended, including five elected officials, four local planning and zoning officials; eleven local government staff members and several state agency and university employees. Educational and regulatory methods were identified as important components of stormwater management. Interest was expressed in a regional approach on technical support for ordinance implementation. Barriers were identified, such as local and political support, funding and staff capacity and, in some instances, a lack of good ordinances in place. Outreach for the general public, elected officials, and board members was recognized as an important component. Technical assistance, including review of stormwater plans and design, was also discussed.

The roundtable was a first step for the LSA to provide future leadership regarding stormwater issues in the region. The LSA expects this project may lead to increased efficiency, new partnerships, and increased communication regarding stormwater management.

FOR MORE INFORMATION

Minnesota's Lake Superior

Coastal Program

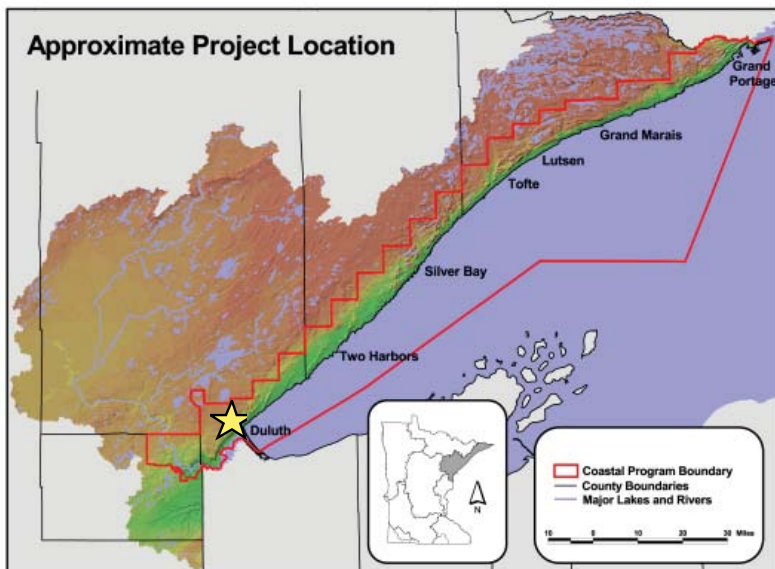
1568 Highway 2

Two Harbors, MN 55616

(218) 834-6612

www.dnr.state.mn.us/waters/lakesuperior

PROJECT LOCATION



THE MISSION OF MINNESOTA'S LAKE SUPERIOR COASTAL PROGRAM IS TO PRESERVE, PROTECT, RESTORE AND ENHANCE COASTAL RESOURCES FOR PRESENT AND FUTURE GENERATIONS. WE PROVIDE TECHNICAL AND FINANCIAL ASSISTANCE FOR LOCAL COMMUNITIES TO BALANCE PROTECTION OF COASTAL RESOURCES WITH PROVIDING RESIDENTS AND VISITORS PLACES TO WORK, LIVE AND PLAY.

ABOUT US