



# TWO HARBORS WATERFRONT PLANNING

With changes in population and a decline in industrial uses of its waterfront, the City of Two Harbors desired an update to their Waterfront Plan. The City desired a Plan that reflects the desires of the community and considers economic, environmental, recreational, and quality of life needs of Two Harbors citizens and visitors.

A new scenario for the future of the waterfront was created based on public input and research. Amendments to the Two Harbors Comprehensive Plan were also considered during the process, including a map for Future Land Use of the waterfront.

Two over arching principles emerged in the Plan for implementation:

- The Two Harbors Waterfront should be a significant contributor to the City's economy, particularly through increased downtown business
- The Two Harbors Waterfront should be, where feasible and safe, a publicly accessible natural and recreational area that is attractive to residents and visitors.

**PROJECT ID:**

306-22-06

**YEAR:**

2004

**GRANTEE:**

City of Two Harbors

**COUNTY:**

Lake

**CATEGORY:**

Coastal Land Use,  
Planning & Development

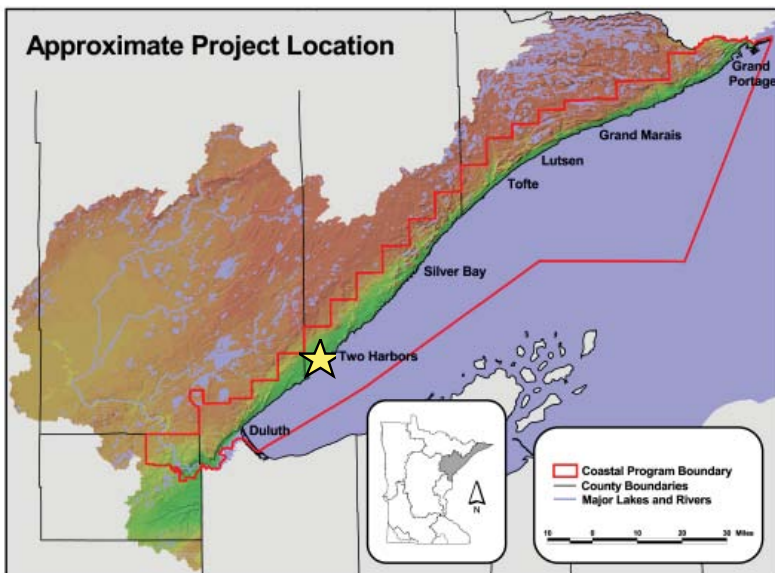
**GRANT AWARD:**

\$15,000

**TOTAL PROJECT COST:**

\$20,000

**PROJECT LOCATION**



*Future land use, from the Two Harbors Comprehensive Plan Amendment, May 2005*

**FOR MORE INFORMATION**

Minnesota's Lake Superior Coastal Program  
1568 Highway 2  
Two Harbors, MN 55616  
(218) 834-6612  
[www.dnr.state.mn.us/waters/lakesuperior](http://www.dnr.state.mn.us/waters/lakesuperior)

