



EROSION & SEDIMENT CONTROL PRODUCTS AND APPLICATION

Thousands of construction projects within the Lake Superior Watershed fall under Phase II of the National Pollutant Discharge Elimination System construction stormwater permit. With the North Shore's clay soils, steep slopes, and abundant bedrock, erosion and sediment control can be a challenge.

These workshops organized a full day of erosion and sediment control training, including both classroom and field experiences. At the Two Harbors workshop (May 5, 2006) 78 people were in attendance; at the Hermantown workshop (September 20, 2006) 46 people attended.

Along with the full day training was an opportunity for attendees to be certified by the University of Minnesota

"Inspector/Installer Certification" if they passed the final test. The attendees also received information on where to get erosion control materials, how to use them properly, and where to install them on their site. In addition, they now know where to turn if they have questions about the stormwater regulations.




Field tours helped attendees see erosion control methods in action

ST. LOUIS AND CARLTON COUNTIES




Erosion & Sediment Control Inspector/Installer Training

Preparing your Construction Site for the Winter



Wednesday
September 20, 2006
7:30AM - 4:15PM

Hermantown Public Safety Building
5111 Maple Grove Road
Hermantown, MN 55811

PROJECT ID:

306-13-06

YEAR:

2004

GRANTEE:

Minnesota Erosion Control Association

COUNTY:

Multiple

CATEGORY:

Outreach and Education

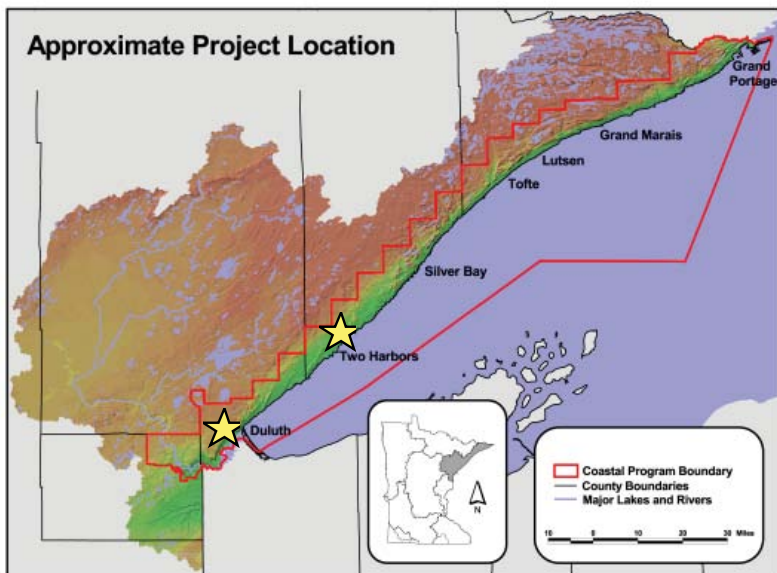
GRANT AWARD:

\$9,010

TOTAL PROJECT COST:

\$24,027

PROJECT LOCATION



The workshop in Two Harbors

FOR MORE INFORMATION

Minnesota's Lake Superior Coastal Program
1568 Highway 2
Two Harbors, MN 55616
(218) 834-6612
www.dnr.state.mn.us/waters/lakesuperior