



NATURAL HISTORY & GEOLOGY OF THE SUPERIOR HIKING TRAIL THROUGH DULUTH

PROJECT ID:

306-04-07

YEAR:

2005

GRANTEE:

Superior Hiking Trail Association

COUNTY:

St Louis

CATEGORY:

Outreach & Education

GRANT AWARD:

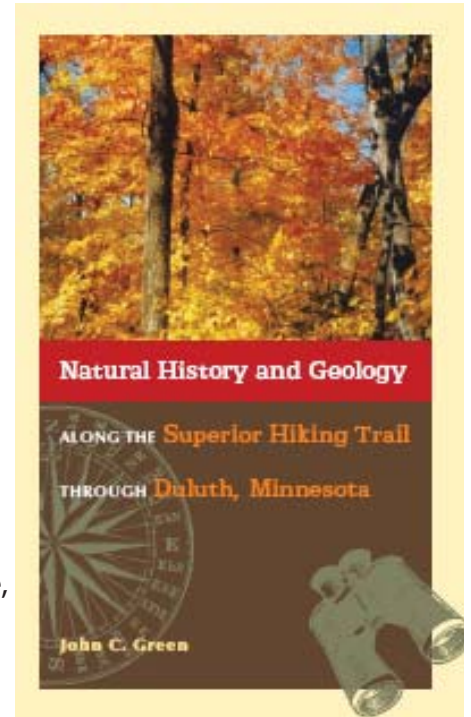
\$9,110

TOTAL PROJECT COST:

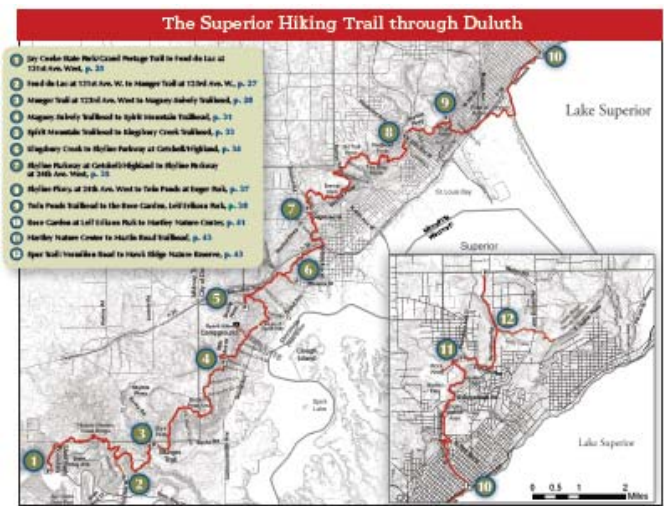
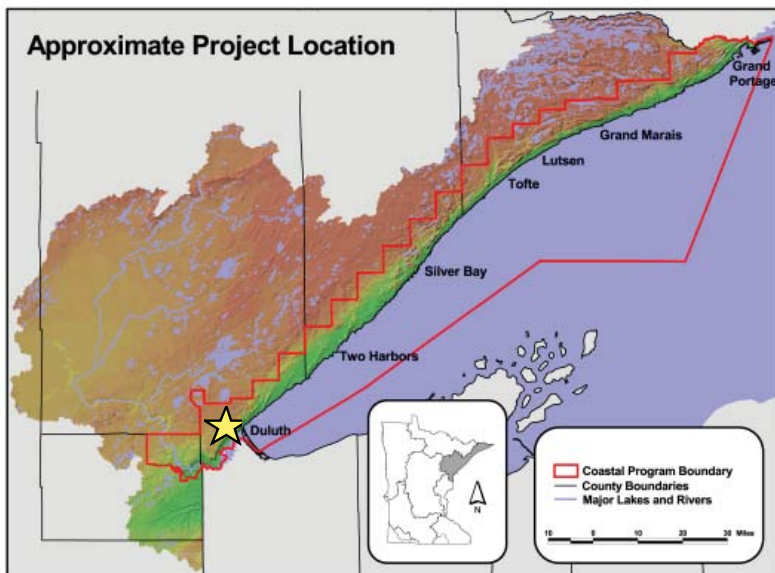
\$14,356

Thirty-nine miles of the Superior Hiking Trail through the City of Duluth pass through many areas of fascinating landscape which include geological features with rocks over a billion years old, spring wildflowers, panoramas, old growth forests, and many other ecological land types. John C. Green, a retired geology professor, naturalist, and hiker spent countless hours roaming the hills of Duluth and the North Shore is the author of the booklet. He helped lay out the Duluth segment of the Superior Hiking Trail.

The booklet is intended to help hikers appreciate the natural history made accessible by the Superior Hiking Trail. It begins with general sections on geology, ecology, streams and wildlife, followed by short descriptions of natural features to look for, organized with 12 trail segments that extend from Highway 210 in Jay Cooke State Park in the southwest to the Martin Road in the northeast.



PROJECT LOCATION



FOR MORE INFORMATION

Minnesota's Lake Superior Coastal Program
 1568 Highway 2
 Two Harbors, MN 55616
 (218) 834-6612
www.dnr.state.mn.us/waters/lakesuperior

