

The Virtual Watershed Guide

Introduction

Thank you for acquiring this presentation, we hope you will be able to utilize it to the fullest extent possible. In order to do so please take time to review this document, it has been created to enable you take full advantage of what this presentation has to offer.

This presentation was designed as a supplement to the Big River Journey Teachers Guide for the Adopt-a-River's Crime Lab. The Big River Journey is an educational partnership that takes children grades 4-6 onto a riverboat and helps them explore and learn about the Mississippi River.

Please modify the text as you see fit, but do ensure that credit is given to the DNR and do not claim ownership. Also be sure to preview the slideshow before presenting.

Viewing the Virtual Watershed:

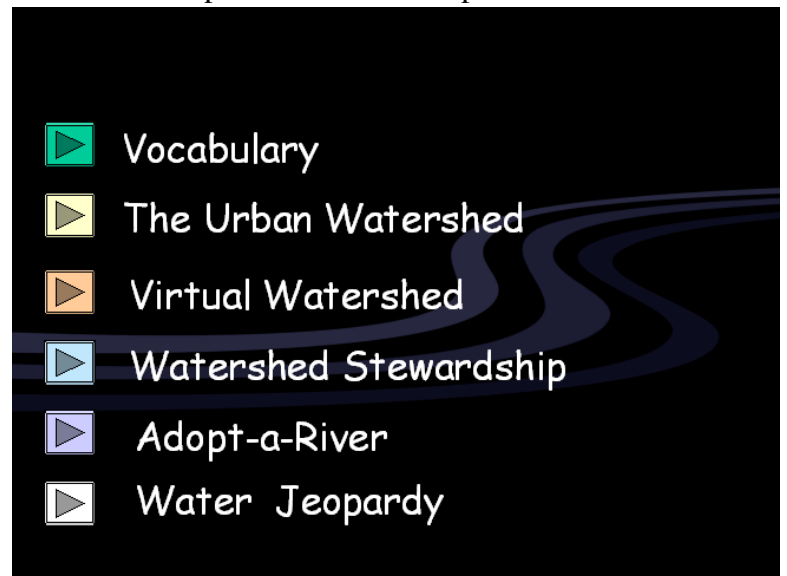
Virtualwatershed2.ppt This shows the Virtual Watershed in .AVI form which is a windows media video file. If you have windows, this should work just fine. If the movie does not show up, on slide 19 (Virtual Watershed Movie), follow these steps:

- 1) Go to CD folder, copy the DNR_Virtual_Watershed folder and paste it onto your computer (e.g. your desktop or my documents).
- 2) Open the presentation titled "VirtualWatershed2.ppt" and navigate to slide 29 titled "Virtual Watershed Movie" go to your menu click "insert" and scroll down to "movies and sounds" and click "movie from file".
- 3) Now you need to select the file you want to insert. Navigate to where you pasted the Virtual Watershed folder. Once found locate the file "VirtualWatershed.avi" (DO NOT USE THE FILE ON THE CD). Click this file then open. You have now placed it into the presentation, you can manipulate the size and position to your liking.

About the presentation

Homepage:

You may notice this page as you begin exploring the presentation. Consider this your "homepage" that you can use to navigate and select particular items within the presentation to view.



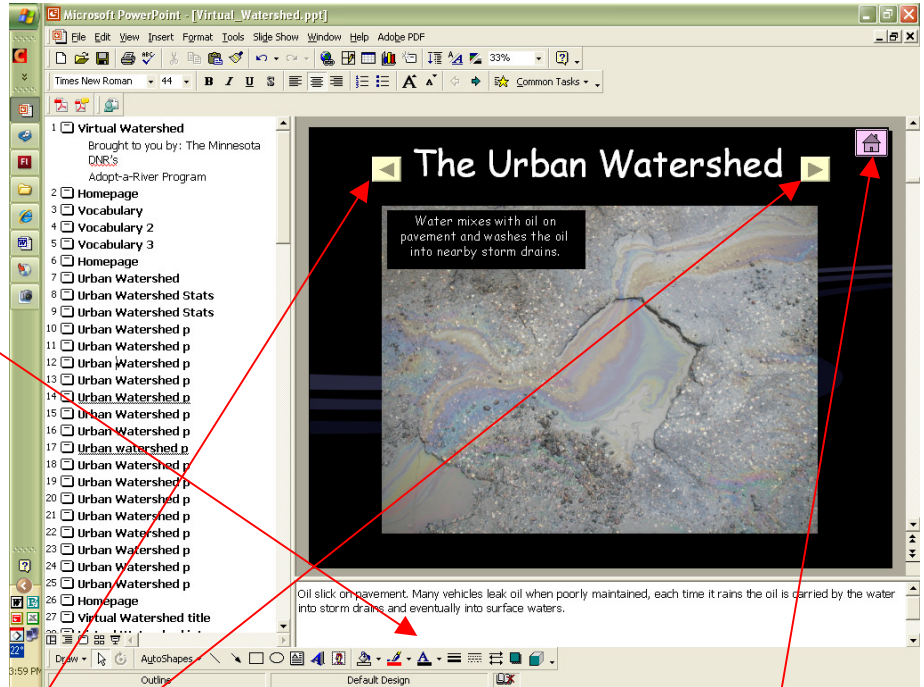
Click the “play” buttons to the left of the text in order to visit the section for the given topic.

The thought behind this is that not all people will want to use every part of the presentation or may want to change the order. This allows it to be easily customized with minimal time spent actually editing and deleting slides and sections.

Speaker notes:

In the image to the right please note the text box below where the slide is displayed. This is the area for speaker’s notes. Many of the slides have content here that provides source information and other background useful when presenting. Please take the time in normal view mode to navigate the presentation and take note of this information.

You can also view these or print each slide out via the PDF enclosed titled “speaker notes”. But be careful if you print it, it’s 100 pages long.



In presentation navigation:

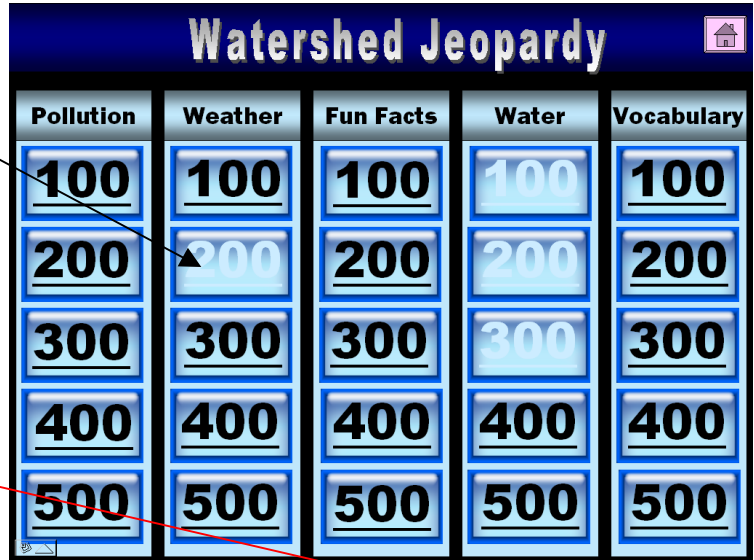
Also note the yellow arrows on either side of the title “The Urban Watershed”. While viewing the presentation (in full screen presentation mode), you can use the mouse to select the arrow and navigate to the previous or next page. You can also move to the next page by clicking once. Typically you cannot see the mouse unless you move it so move it back and forth and you should be able to see it again. Also note the pink house button. If you click this at any point in the presentation you will be brought back to the “homepage”.

Watershed jeopardy:

To play, assign the students into groups (2 equal groups would be optimal), and come up with a way for them to “ring in” and keep score. It may be easiest to call on the first group to raise a hand, allow the group to consult each other on the answer for a reasonable amount of time, they get it incorrect the points will be forfeited. To access the questions click the number value once which will take you to the question. Once you

have visited a question the number value on the game board screen will turn a light shade of blue.

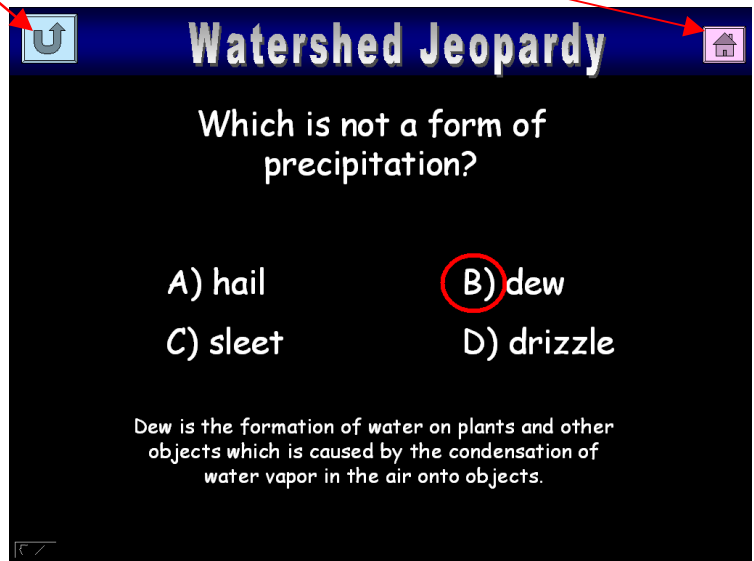
To the right is a representation of one of the question pages. Note the blue arrow button on the upper left corner. You must click this once after the answer is displayed to return to the main screen. Clicking the pink house again will take you to the main page of the presentation and out of the Watershed Jeopardy game. **Practice navigation and question and answer viewing before attempting to use this!**



The image shows a game board for 'Watershed Jeopardy'. It has a dark blue header with the title and a pink house icon. Below the header are five columns representing different categories: Pollution, Weather, Fun Facts, Water, and Vocabulary. Each column has five rows representing different point values: 100, 200, 300, 400, and 500. The numbers are displayed in a light blue box, indicating they have been visited. A blue arrow button is located in the upper left corner of the board.

Pollution	Weather	Fun Facts	Water	Vocabulary
100	100	100	100	100
200	200	200	200	200
300	300	300	300	300
400	400	400	400	400
500	500	500	500	500

If some questions seem too hard or easy, please change them and alter them in a way that is best suited to your group.



The image shows a question screen for 'Watershed Jeopardy'. It has a dark blue header with the title and a pink house icon. Below the header is a question: 'Which is not a form of precipitation?'. There are four options: A) hail, B) dew, C) sleet, and D) drizzle. Option B is circled in red. Below the options is a definition: 'Dew is the formation of water on plants and other objects which is caused by the condensation of water vapor in the air onto objects.' A blue arrow button is located in the upper left corner of the screen.

Which is not a form of precipitation?

A) hail B) dew
C) sleet D) drizzle

Dew is the formation of water on plants and other objects which is caused by the condensation of water vapor in the air onto objects.