

- Legend**
- Fisheries Offices
 - Interstates
 - Federal Highways
 - State Highways
 - County Roads
 - Township Roads
 - (DNR Administered State Trails)
 - 12 to 16 inch Protected Site for All Trout (Artificial Lures or Flies Only)
 - 12 to 16 inch Protected Site for All Trout (Bait Allowed)
 - 12 inch Minimum for Brook Trout (Artificial Lures or Flies Only)
 - Catch & Release for All Trout (Artificial Lures or Flies Only)
 - Catch & Release for All Trout (Bait Allowed)
 - Catch & Release for Brook Trout
 - Fishable Trout Streams
 - Streams
 - Lakes
 - Designated Trout Lakes
 - Non Designated Trout Lakes
 - No Special Reg.
 - Special Reg.
 - Minnesota Inp.
 - State Park Inp.
 - Wildlife Manag.
 - Scientific and
 - Forestry Land
 - Fishing Easem.
 - Military Grases
 - County Bound.

0 0.5 1 2

Camp Hayward Creek

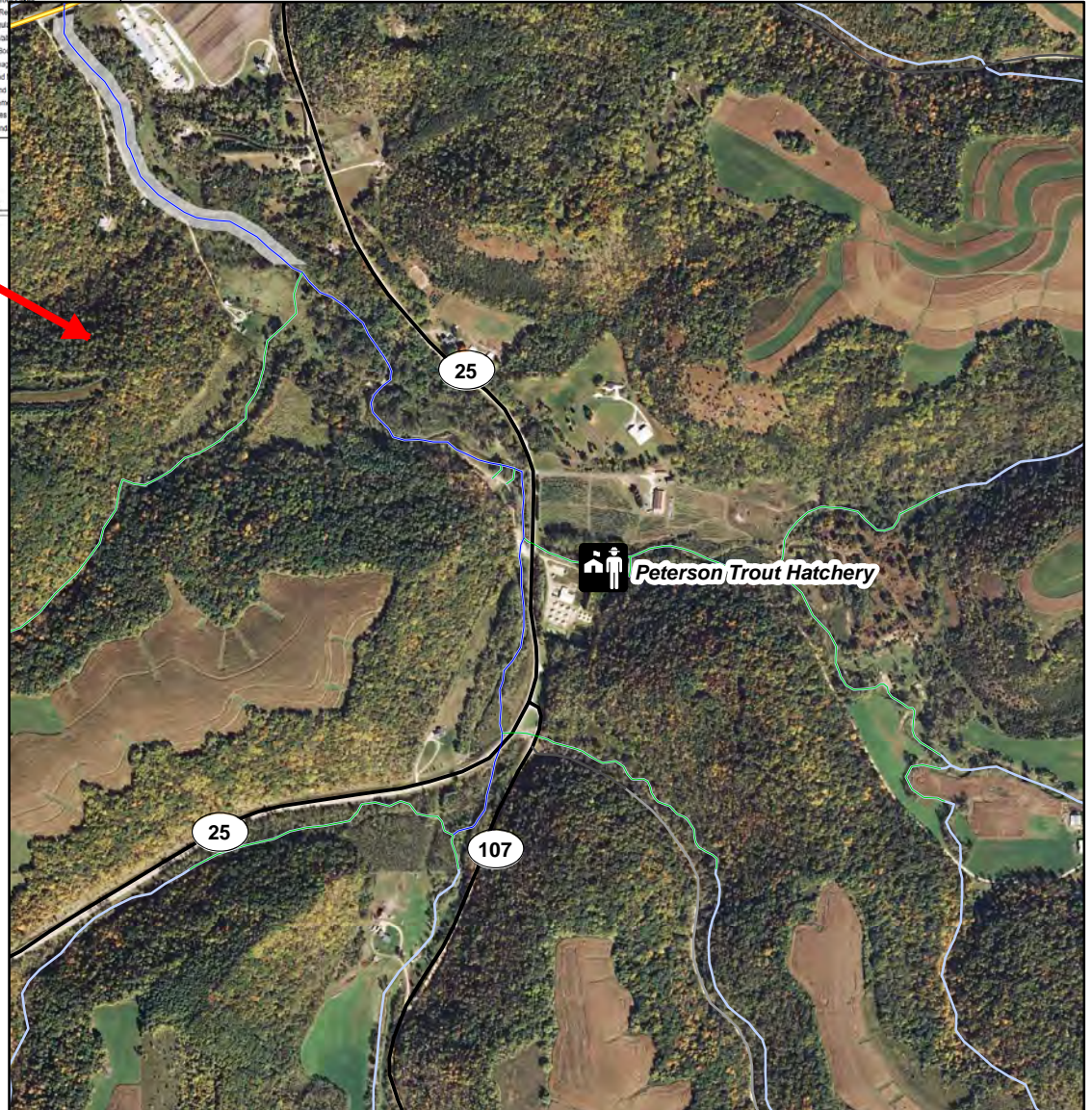
Fillmore County

Camp Hayward Creek Trout Fishing Easement

Hunting, other recreational activities, and dogs are not permitted without the landowner's permission in easement areas.

No unauthorized motor vehicles are allowed within easement areas. Parking is along the road. Do not block field entrances.

0 0.125 0.25 0.5 Miles



Legend

- Peterson Hatchery
- Designated Trout Stream
- Protected Tributary to Designated Trout Stream
- State AMA Acquisitions Fishing Easement