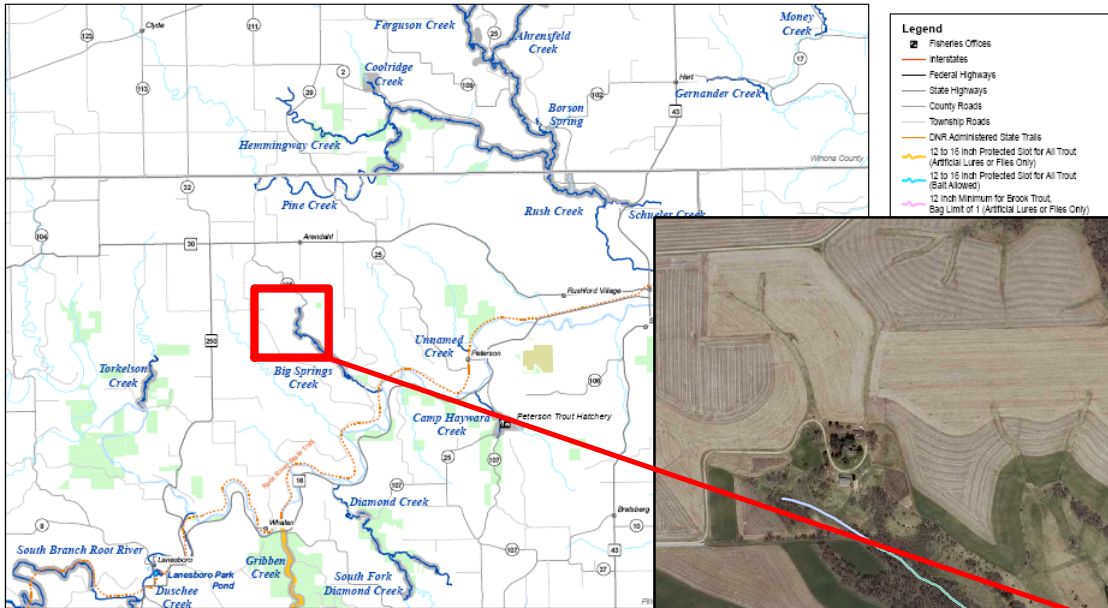


Big Springs Creek

Fillmore County

Big Springs Creek Trout Fishing Easement

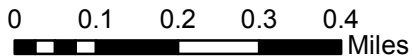


- Legend**
- Fisheries Offices
 - Interstates
 - Federal Highways
 - State Highways
 - County Roads
 - Township Roads
 - CNR Administered State Trails
 - 12 to 16 Inch Protected Slot for All Trout (Artificial Lures or Flies Only)
 - 12 to 16 Inch Protected Slot for All Trout (Bait Allowed)
 - 12 inch Minimum for Brook Trout, Bag Limit of 1 (Artificial Lures or Flies Only)



Hunting, other recreational activities, and dogs are not permitted without the landowner's permission in easement areas.

No unauthorized motor vehicles are allowed within easement areas. Parking is along the road. Do not block field entrances.



Legend

- Designated Trout Stream
- Protected Tributary to Designated Trout Stream
- State AMA Acquisitions - Fishing Easement