

FEATURES OF SOME COMMON MINNESOTA FISH FAMILIES

Catfish Family

Barbels (whiskers, not stingers)

Grayish body

Deeply forked tail

Channel catfish

Brown mottled body

Slightly forked or flat tail

Flathead catfish

Mouth with "underbite"

Brown to black body

Slightly forked or flat tail

Black bullhead

No "underbite"

Slightly forked or flat tail

Yellow bullhead

No "underbite"

Yellow barbels

Slightly forked or flat tail

Brown bullhead

No "underbite"

Brown mottled body

Sunfish Family/Panfish

Black gill flap

Bluegill sunfish

Black gill flap with orange spot

Pumpkinseed sunfish

Black gill flap with yellow to white margin

Bluish-green color

Green sunfish

Silvery body with black spots

Black crappie

Silvery body with black spots arranged in vertical bars

White crappie

Sunfish Family (continued)

Green body with horizontal dark strip

Jaw past eye

Largemouth bass

Brownish body with vertical dark stripes

Jaw not past eye

Smallmouth bass

Pike Family

Rounded tips on tail

Light colored spots on dark body

Duck-billed shaped mouth

Northern Pike

Forked tail

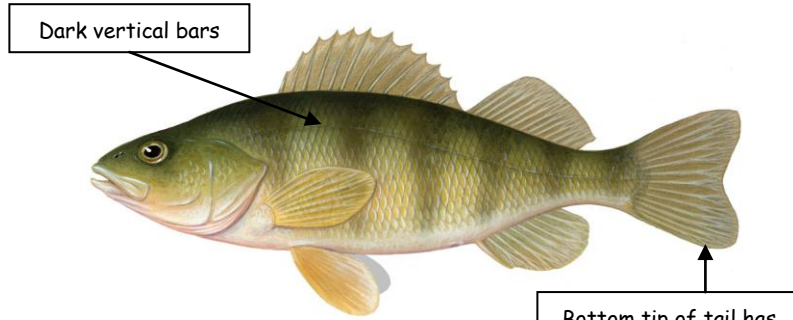
Dark colored spots or bars on light body

Muskellunge

Duck-billed shaped mouth

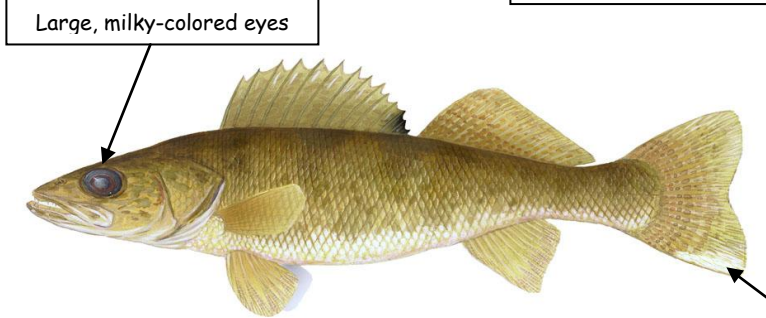


Perch Family



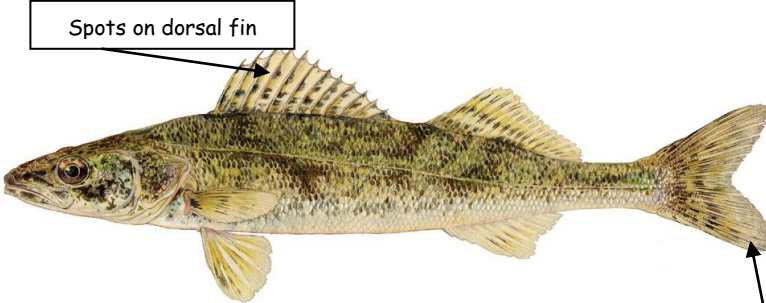
Yellow perch

Bottom tip of tail has no white spot



Walleye
(Minnesota's State Fish)

Bottom tip of tail has white spot

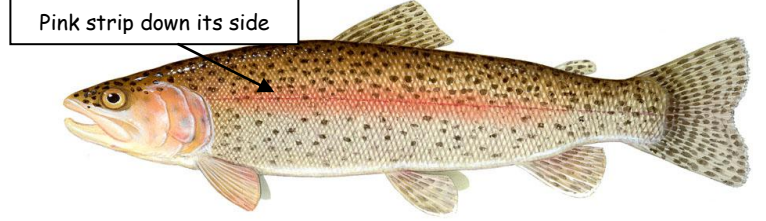


Sauger

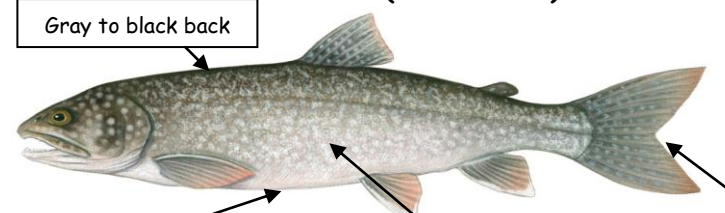
Bottom tip of tail has no white spot

For more information on Minnesota fishes, please visit:
<http://www.dnr.state.mn.us/fishing/index.html>

Salmon/Trout Family



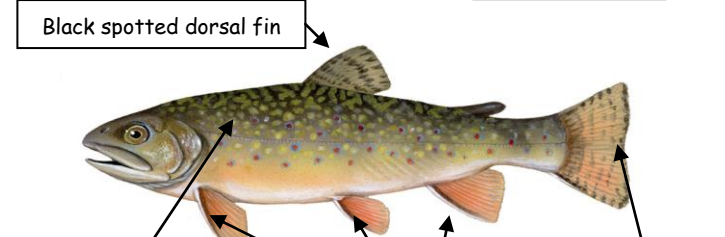
Rainbow trout (non-native)



Lake trout

Light spots

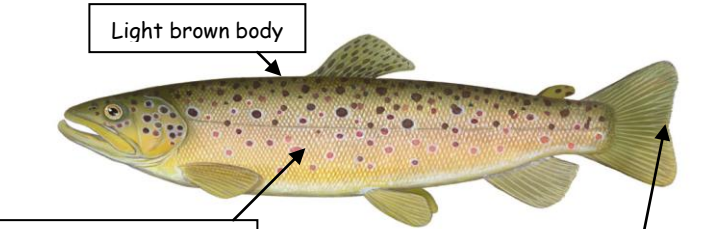
Forked tail



Brook trout

Like Lake trout - Brook trout have white leading edge on bottom fins

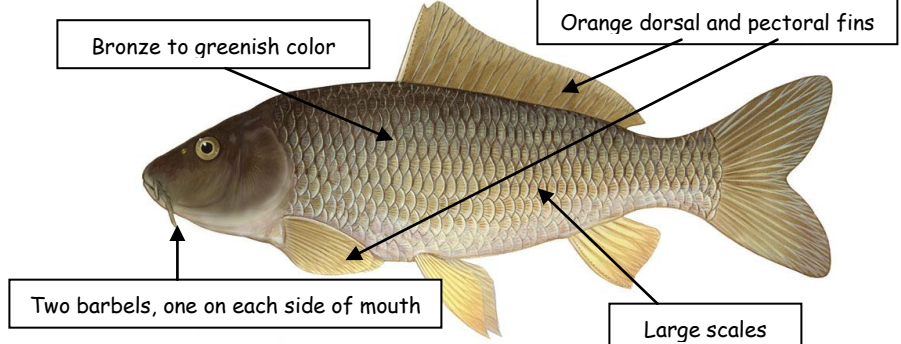
Square tail



Brown trout (non-native)

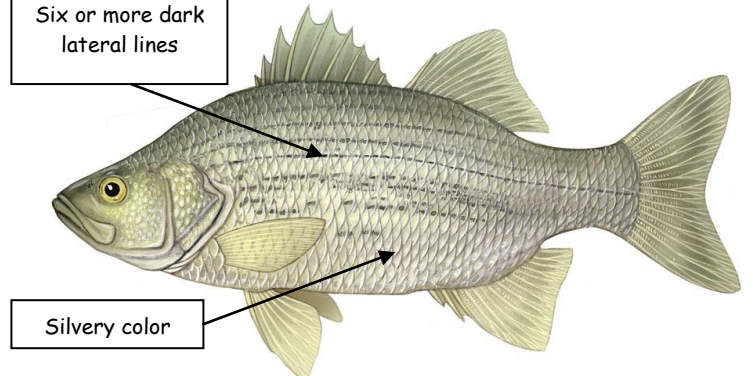
Square tail

Other Sport Fish



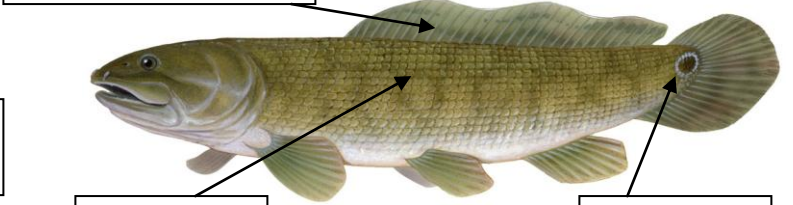
Common carp (non-native)

Large scales

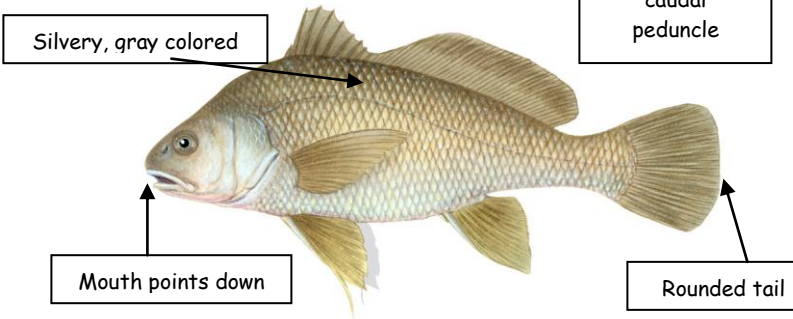


White bass

Long, wavy dorsal fin



Bowfin (Dogfish)



Freshwater drum (Sheephead)

Rounded tail